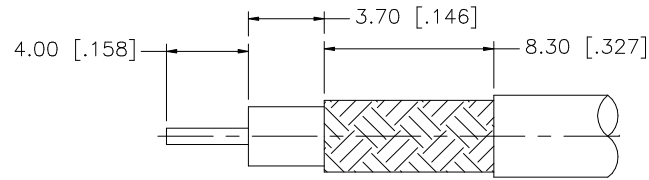
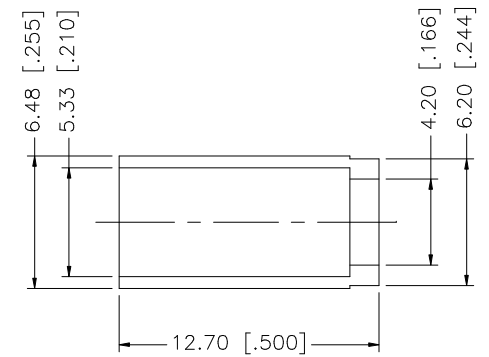
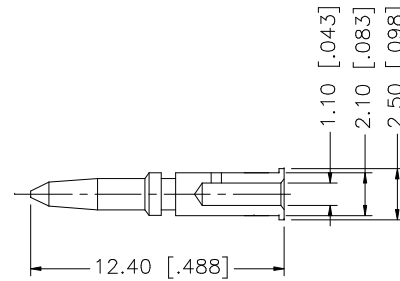
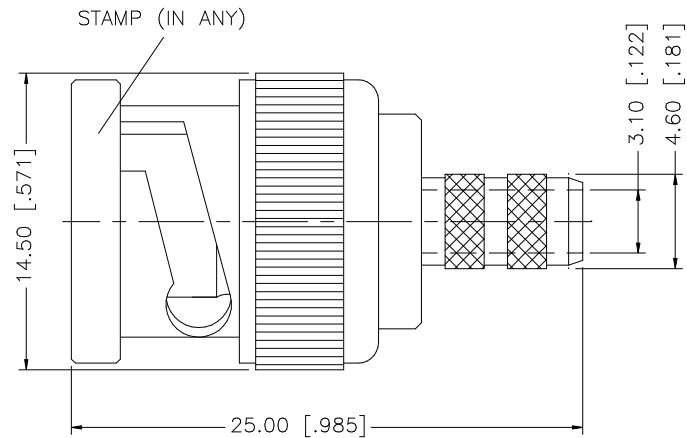


REV.	DATE	DESCRIPTION
NC	05/24/05	INITIAL RELEASE
A	10/11/99	UPDATE DRAWING / MODIFY FERRULE
B	07/31/01	MODIFY FERRULE
C	08/10/05	UPDATE DRAWING FORMAT



RECOMMENDED  
CABLE STRIPPING DIM'S



8				<small>UNLESS OTHERWISE SPECIFIED DIMENSIONS ARE IN MILLIMETERS. DIMENSIONS IN [ ] ARE IN INCHES AND FOR CUSTOMER REFERENCE ONLY.</small>  <small>UNLESS OTHERWISE SPECIFIED TOLERANCES FOR MILLIMETERS ARE:</small> 0.5 - 8mm ± 0.20mm 8 - 30mm ± 0.40mm 30 - 120mm ± 0.50mm  <small>UNLESS OTHERWISE SPECIFIED TOLERANCES FOR INCHES ARE:</small> .020 - .315 = ± 0.007" .315 - 1.180 = ± 0.015" 1.180 - 4.724 = ± 0.020"	APPROVALS	DATE	<h1 style="color: blue;">Amphenol Connex</h1> <p><b>BNC CRIMP PLUG (58T BELDEN 89907)</b></p>	
7			DRAWN		G.R.S.	08/10/05		PART DESCRIPTION
6			CHECKED					PART NO.
5			ISSUED					112124
4	FERRULE	BRASS	NICKEL	1	SHEET	1 OF 1	DWG. NO.	
3	CONTACT PIN	BRASS	GOLD	1			112124.DWG	
2	INSULATOR	DELRIIN	NATURAL	1			REV. C	
1	BODY	BRASS	NICKEL	1			SIZE A	
DESCRIPTION				MATERIAL	FINISH	QTY	SCALE NA	
				DO NOT SCALE DRAWING	CAD FILE C:/112/112124.DWG			