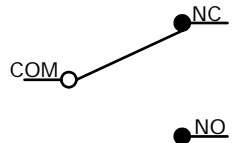


C P.C. MOUNTING

B	O.P. (MM)	P.T. (MM)
	14.7±0.5	2.0 MAX.

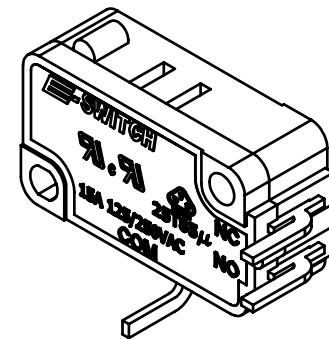
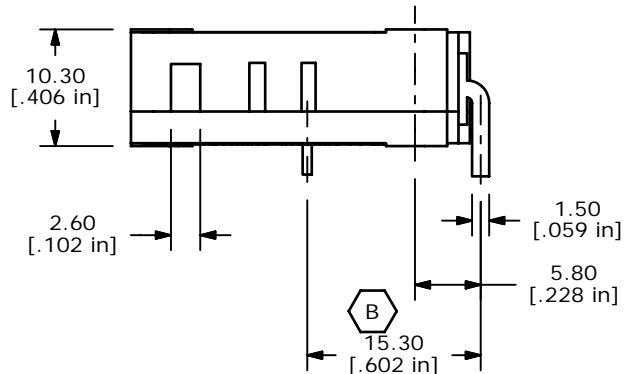
O.P. = OPERATING POINT
P.T. = PRE-TRAVEL



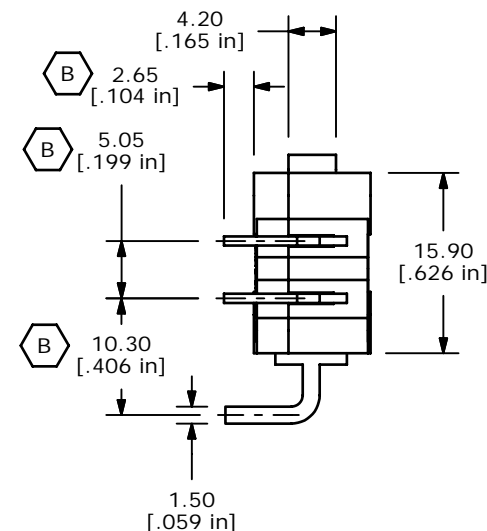
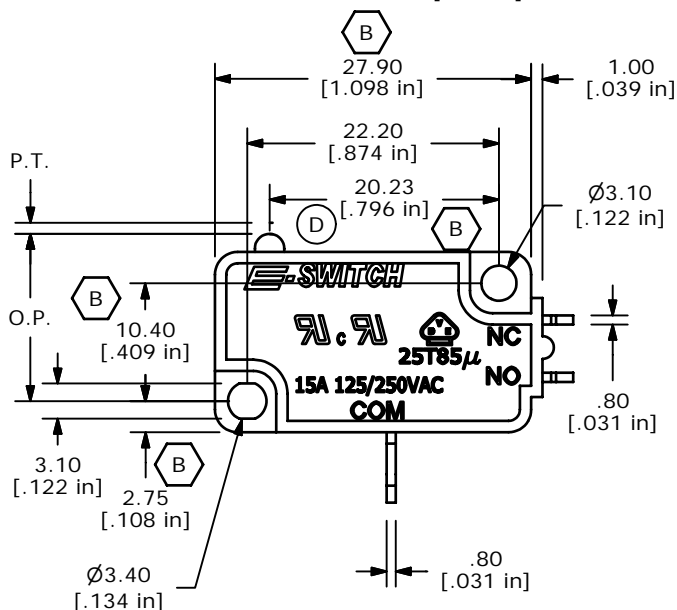
CIRCUIT: SPDT

NOTES:

- ALL DIMENSIONS IN MM [INCH]
- GENERAL TOLERANCE: X.X=±0.4
X.XX=±0.25
- RATING: 15A @125/250VAC UL, CUL, VDE APPROVED
- ▲ OPERATING FORCE: 160±40 GRAMS
- OPERATING TEMP: -25°C TO 85°C
- ELECTRICAL LIFE: 50,000 CYCLES MIN.
- MECHANICAL LIFE: 1,000,000 CYCLES TYP. **(D)**
- INSULATION RESISTANCE: 100 MEGA-OHMS MIN.
- DIELECTRIC STRENGTH: 1500VAC 1 MINUTE (INITIAL VALUE)
- CONTACT RESISTANCE: 100 MILLI -OHMS MAX.
- ▲ DENOTES CRITICAL PARAMETER
- 2002/95/EC (ROHS) COMPLIANT **(D)**



ISOMETRIC



REV	PCR NO	DESCRIPTION	DATE	BY
D	15603	CHANGES NOTED	12/13/05	PH
C	15058	FIXED MODEL, ADDED PC LAYOUT	7/1/05	JB
B	14890	CHANGED DIMENSIONS AND NOTES	5/2/05	JB
A	14712	RELEASED FOR PRODUCTION	3/9/05	AR

THE INFORMATION CONTAINED IN THIS DOCUMENT IS PROPRIETARY TO E-SWITCH AND IS NOT TO BE COPIED OR TRANSFERRED



TITLE LS0851500F160V2A

SCALE	DATE	DR	DWG	REV
1.5:1	2/22/2005	AR	Q950001	D