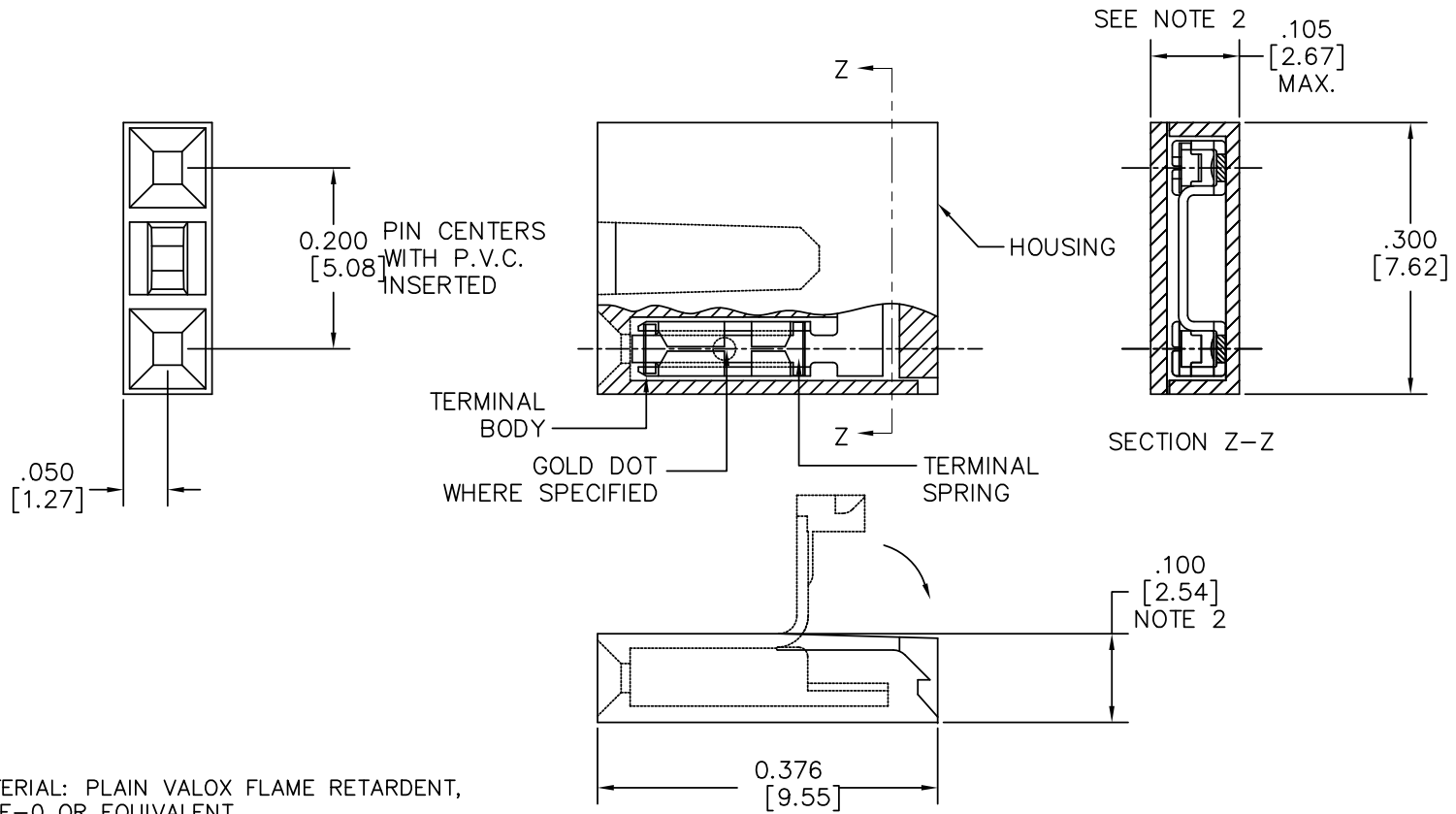


PRODUCT NO.
SEE SHT. 2



NOTES

- HOUSING MATERIAL: PLAIN VALOX FLAME RETARDENT, PER UL 94-VE-0 OR EQUIVALENT. COLOR WHITE
- .100/2.54 MAX. APPLIES TO HOUSING BODY. .105/2.67 MAX. APPLIES TO BODY AND LID, AFTER LID IS CLOSED PER TMS-258-88
- ADD 'LF' SUFFIX AT THE END OF PART NUMBERS FOR LEAD FREE OPTION.
- IF "LF" THE P/N THE PRODUCT MEETS EUROPEAN UNION DIRECTIVES AND OTHER COUNTRY REGULATION AS DESCRIBED IN GS-22-008.
- THE PRODUCT IS NOT INTENDED TO BE EXPOSED TO A MANUFACTURING SOLDER PROCESS.
- PRODUCT SPECIFICATION: BUS-12-023.

mat'l. code		surface ISO 1302 ✓		tolerance ISO 406 ISO 1101		projection ASME Y14.5		product family JUMPER	
ltr ecn nchr date		tolerances unless otherwise specified		title		MINI JUMP CONNECTOR ASS'Y 200 cc			
F	M06-0187	MHT	5/15/06	angles	linear	XXX.X/XXX.3	INCH/MM		scale: 10:1
G	M07-0112	MHT	2/14/07	0°±2'		XXX.X/XXX.13			
H	M09-0065	MHT	4/13/09			XXX.X/XXX.051			
J	BLX-N-011712	J.Z	2012-05-04	dr	J.W. BAIR	2/3/89	FCJ		sheet of 2
				engr	M.HAHN	2/3/89			65771
				chr					A3
				appd	M.HAHN	2/3/89			type Product Customer Drawing
sheet index	revision	J	J						
	sheet	1	2						

Copyright FCI
FCIconnect.com

PRODUCT NO. NOTE 3	TERMINAL		TERMINAL SPRING	
	BODY MATERIAL	CONTACT PLATING	MATERIAL	PLATING
65771-001	.010/.025 THK. 1/4 HD. BRASS ALLOY UNS C26000	1.02μ/40μ" AU OR GXT OVER 1.27μ/50μ" NICKEL	.122/.0048 THK BE-CU ALLOY	GOLD FLASH
65771-002		TIN LEAD	UNS C17200 HEAT TREATED	TIN PLATED
65771-003	_____	_____	_____	_____
65771-004	.010/.025 THK. 1/4 HD CU-NI ALLOY UNS C72500	.03/.001 MIN THK. GOLD DOT	.122/.0048 THK BE-CU ALLOY UNS C17200 HEAT TREATED	GOLD FLASH
65771-005				.25/.010 BRASS

OBSOLETE

LEAD FREE OPTION

PRODUCT NO.	TERMINAL		TERMINAL SPRING	
	BODY MATERIAL	CONTACT PLATING	MATERIAL	PLATING
65771-001LF	.010/.025 THK. 1/4 HD. BRASS ALLOY UNS C26000	1.02μ/40μ" AU OR GXT OVER 1.27μ/50μ" NICKEL	.122/.0048 THK BE-CU ALLOY	GOLD FLASH
65771-002LF		TIN	UNS C17200 HEAT TREATED	TIN PLATED
65771-004LF	.010/.025 THK. 1/4 HD CU-NI ALLOY UNS C72500	.03/.001 MIN THK. GOLD DOT	.122/.0048 THK BE-CU ALLOY UNS C17200 HEAT TREATED	GOLD FLASH
65771-005LF				.25/.010 BRASS

mat'l. code	surface ISO 1302 ✓	tolerance ISO 406 ISO 1101	projection 	product family JUMPER
ltr	ecn	ndr	date	tolerances unless otherwise specified
J				linear X.XX±.01/X.XX±.03 X.XX±.005/X.XX±.013 X.XX±.0020/X.XX±0.051
				angles 0°±2'
				INCH/MM
				scale 10:1
	dr	J.W. BAIR	2/3/89	
	enr	M.HAHN	2/3/89	
	chr			
	appd	M.HAHN	2/3/89	
sheet index	revision sheet			title MINI JUMP CONNECTOR ASS'Y 200 cc
				dwg no 65771
				shee 2 of 2 size A3
				type Product Customer Drawing

FCJ
FCIconnect.com

Copyright FCI