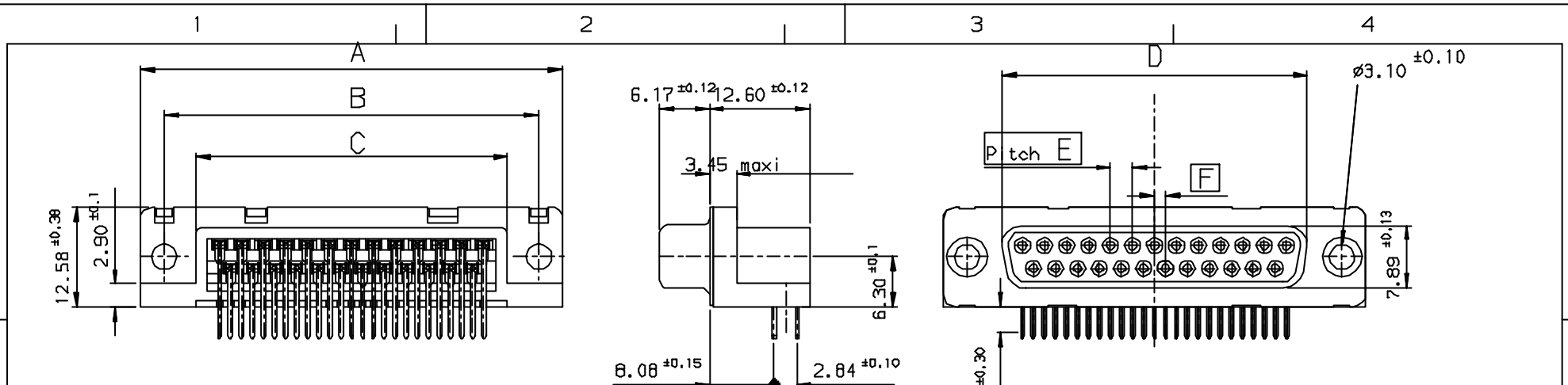


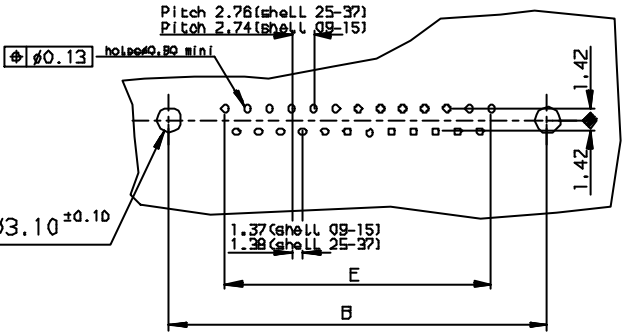
Tous droits réservés. Reproduction ou communication de ces plans interdite sans autorisation écrite de la Direction de l'Ingénierie. Droits de reproduction FCI.

FCI

All rights strictly reserved. Reproduction or use of third parties in any form without the prior written authorization of the manufacturer. Property of FCI. Copyright FCI.



PC card drilling dimensions (after plating)
(thickness 1.50±0.20mm)



SHELL	A±0.38	B±0.12	C±0.10	D±0.25	E±0.07	PART NUMBER	PART NUMBER
09	30.81	24.99	16.96	16.21	10.96	D09S33E4PA00**	D09S33E6PA00**
15	39.14	33.32	25.18	24.54	19.18	D15S33E4PA00**	D15S33E6PA00**
25	53.03	47.04	39.12	38.25	33.12	D25S33E4PA00**	D25S33E6PA00**
37	69.32	63.50	55.68	54.71	49.68	D37S33E4PA00**	D37S33E6PA00**

Gold Flash 0,75 µ gold

LF FOR LEAD FREE

REQUIREMENTS

Technical characteristics:
 Shell: steel tin plated
 Insulators: self-extinguishing thermoplastic, UL class 94V0
 Contacts: phosphor bronze, gold (for thickness see table)
 over 2 µ mini nickel on active area and flash to 1.5 µ maxi SnPb
 over 1 µ mini nickel on termination.

Cycles: 200 min for plating 4.
 Cycles: 500 min for plating 6.

Electrical characteristics:

max. current rating: 5A
 Test voltage: 1000V
 Rated voltage: 300V
 Contact resistance: <15ma
 Shell resistance: <5ma
 Insulation resistance: >5000Ma

Climatic characteristics:

Operating temperature range: -55°C +125°C

Dimensions:

In accordance with MIL-C-24308

Part Number & Date Code Printing

FOR ROHS DETAILS REFER DWG. NO. C01-8646-0000

Ltr	Ecn no	Dr	date
d	105-0124	JS	27/7/05

Dr JOHN SLEEBA 24/10/89		Product Family	D-SUB	Tolerance LINEAR ±0.1 ANGULAR ±1°	Projection MM
Eng GEORGE VJ 24/10/89		Spec ref		Size	A3
Chr GEORGE VJ 27/7/05		Material		Scale	
Appr K Somasundaram 27/7/05				ECN	
FCI		Title	SOCKET CONNECT, DELTA D RIGHT ANGLED spill without accessories.		Dwg no C01-8646-0010
Catalog no		DELTA-D		CUSTOMER COPY	Rev. d
				Sheet 1 of 1	

d	DATE	REVISION DESCRIPTION
d	27/7/05	LEAD FREE DETAILS ADDED