

PN°	REV.	DESCRIPTION	NAME	DATE
CODING: BLACK P/N°: 0982731001	A	-PRELIMINARY ISSUE FOR GENERAL MARKET	EBA	04/11/08
	B	-ADDED ERGONOMICS EVOLUTION FOR UNMATING SLIDE	FKO	07/10/23
	C	-NEW PIN-HOLE	DDO	09/10/19
	D	-ALL MARKINGS UPDATED. - TEXTS IN FRENCH REMOVED.	GD	12/02/28
CODING: GREEN P/N°: 0982731002				
CODING: BLUE P/N°: 0982731003				
CODING: WHITE P/N°: 0982731004				
CODING: BROWN P/N°: 0982731005				
CODING: GREY P/N°: 0982731006				

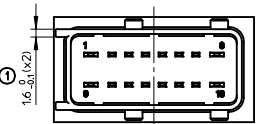
MODIFICATIONS			
REV.	DESCRIPTION	NAME	DATE
A	-PRELIMINARY ISSUE FOR GENERAL MARKET	EBA	04/11/08
B	-ADDED ERGONOMICS EVOLUTION FOR UNMATING SLIDE	FKO	07/10/23
C	-NEW PIN-HOLE	DDO	09/10/19
D	-ALL MARKINGS UPDATED. - TEXTS IN FRENCH REMOVED.	GD	12/02/28
	-NOTES UPDATED.		

- NOTES:
- REPRESENTED CONNECTOR: BLACK CODING.
 - FEMALE CONNECTOR WILL MATE WITH MALE CONN. P/N°098276100X.
 - APPLICATION SPECIFICATION: AS-98273-001
 - PACKAGING SPECIFICATION: PK-98273-001
 - BOW ALLOWED: 0.4MM
 - TERMINALS TO BE USED ARE SPECIFIED ON THE APPL. SPEC.

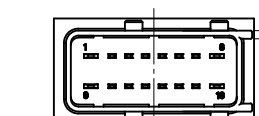
MOLEX P/N°	ITEM	DESCRIPTION	MATERIAL	COLOUR
0982750001	3	LOCKING SLIDER	>PBT-GF15<	RED
0982740001	2	SECONDARY LOCKING (TPA)	>PBT-GF20<	YELLOW
098273000X	1	FEMALE HOUSING	>PBT-GF20<	SEE CHART

REVISED EC NO: G2012-0137 DRWNG:DESBRUIERES 2012/02/28 CHKD:Y LOUAS 2012/02/29 APPR:CBOLCHAN 2012/03/09	DESCRIPTION 16W HYB. - FEM. CONN.	QUALITY SYMBOLS 		GENERAL TOLERANCES (UNLESS SPECIFIED)		DIMENSION STYLE MM ONLY		SCALE 2:1		DESIGN UNITS METRIC		FIRST ANGLE PROJECTION	
		4 PLACES ± --- ± --- 3 PLACES ± --- ± --- 2 PLACES ± 0.10 ± --- 1 PLACE ± 0.2 ± ---		mm INCH		DRAWN BY EBASSET		DATE 2004/11/08		TITLE 16W HYB. - FEM. CONN. 1.5 - 2.8			
		ANGULAR ± 1 °		DRAFT WHERE APPLICABLE MUST REMAIN WITHIN DIMENSIONS		CHECKED BY EBASSET		DATE 2004/11/08		APPROVED BY LSTICKEI			
		MATERIAL NO.		SEE CHART		MATERIAL NO.		DATE 2004/11/08		MOLEX INCORPORATED			

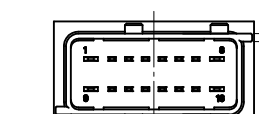
CODINGS SCALE 2:1



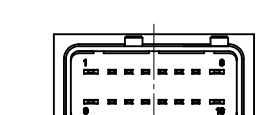
COLOR : BLACK



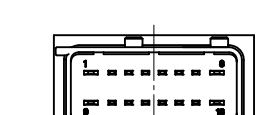
COLOR : GREEN



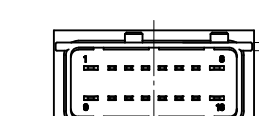
COLOR : BLUE



COLOR : WHITE

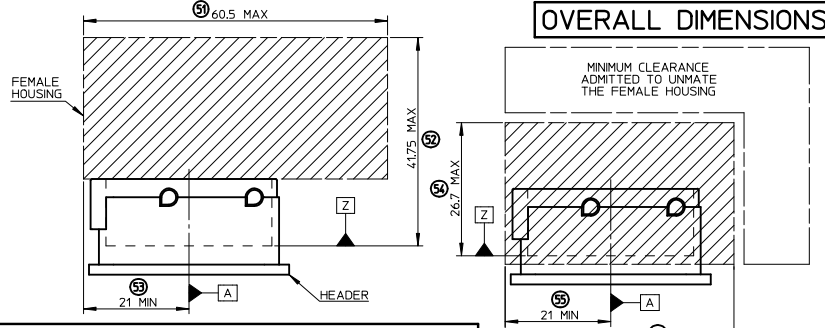


COLOR : BROWN

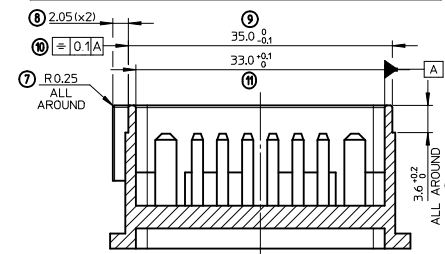


COLOR : GREY

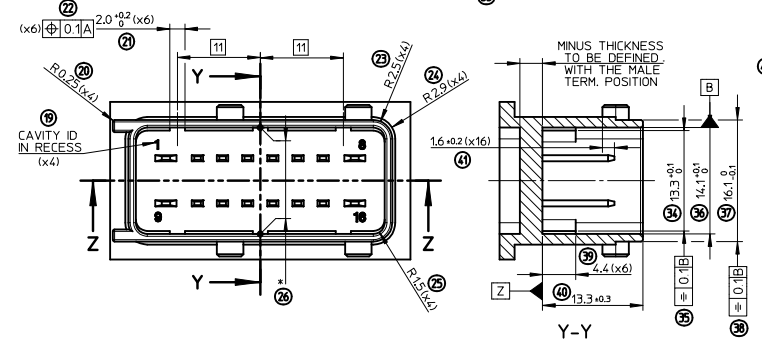
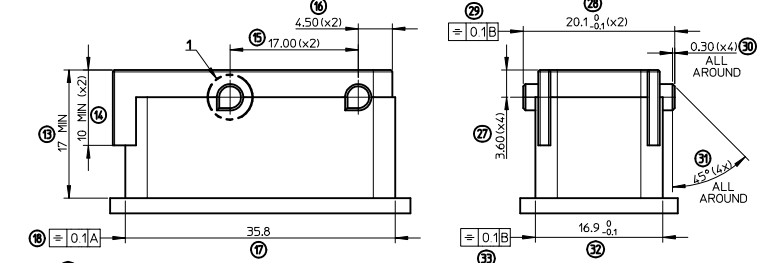
OVERALL DIMENSIONS



**HEADER DEFINITION
BLACK CODING REPRESENTED**



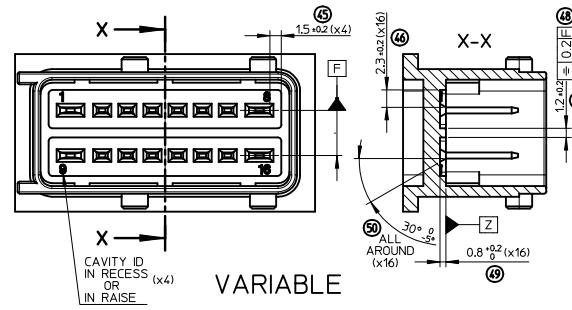
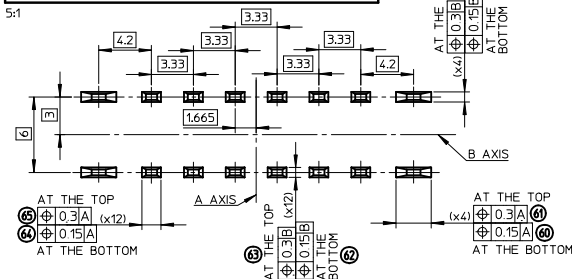
Z-Z



INSPECTION BALLOON NUMBER LOG

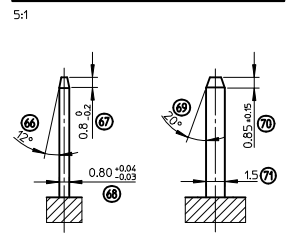
PER DRAWING REVISION: A
 LAST BALLOON NUMBER USED: 78
 ADDED BALLOON NUMBERS: NONE
 REMOVED BALLOON NUMBERS: NONE

MALE TERMINALS POSITION

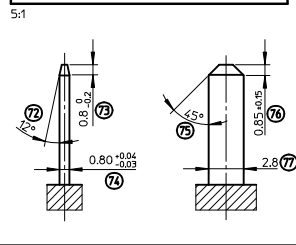


VARIABLE

1.5 MALE TERMINAL DEFINITION



2.8 MALE TERMINAL DEFINITION



NOTES

- 1 - MALE TERMINALS :
 - RESISTANCE : 100N MIN IN MALE TERM. AXIS
 - MATERIAL : COPPER, COPPER ALLOY OR BRASS
 - FINISHES : TIN PLATED 2µm MIN
- 2 - HEADER :
 - RADI WITHOUT DIM : R=0.3 MM
 - E MIN : MINIMUM MATERIAL THICKNESS RECOMMENDED FOR SPECIFIED MATERIAL
 - (78) - MATERIAL : PBT-GF20 (RECOMMENDED)
 - WARPING : 0.4 MM MAX ACCEPTED ON "x" (0.2 MM ON EACH SIDE)
- 3 - MATES WITH : MOLEX CONNECTORS 98273-100X

FIRST RELEASE EC NO: G2012-0959 DRAWN: PBOSQUAIN 2012/04/18 CHECKED: AHERBELIN 2012/05/11 APPROVED: PLESSIS 2012/05/25	QUALITY SYMBOLS DESCRIPTION	GENERAL TOLERANCES (UNLESS SPECIFIED)		DIMENSION STYLE MM ONLY		SCALE 3:1	DESIGN UNITS METRIC	FIRST ANGLE PROJECTION		
		4 PLACES ± --- ± --- 3 PLACES ± --- ± --- 2 PLACES ± 0.05 ± --- 1 PLACE ± 0.1 ± --- 0 PLACE ± 0.1 ± ---	mm INCH	DRAWN BY PBOSQUAIN	DATE 2012/04/18	CHECKED BY AHERBELIN	DATE 2012/05/11	TITLE 16W INTERFACE HYB TERM (FOR FEMALE HOUSING)		
		ANGULAR ± 2 °	MATERIAL NO. N/A	APPROVED BY OPLESSIS	DATE 2012/05/25	DOCUMENT NO. SD-98273-002			SHEET NO. 1 OF 1	
		DRAFT WHERE APPLICABLE MUST REMAIN WITHIN DIMENSIONS		THIS DRAWING CONTAINS INFORMATION THAT IS PROPRIETARY TO MOLEX INCORPORATED AND SHOULD NOT BE USED WITHOUT WRITTEN PERMISSION						