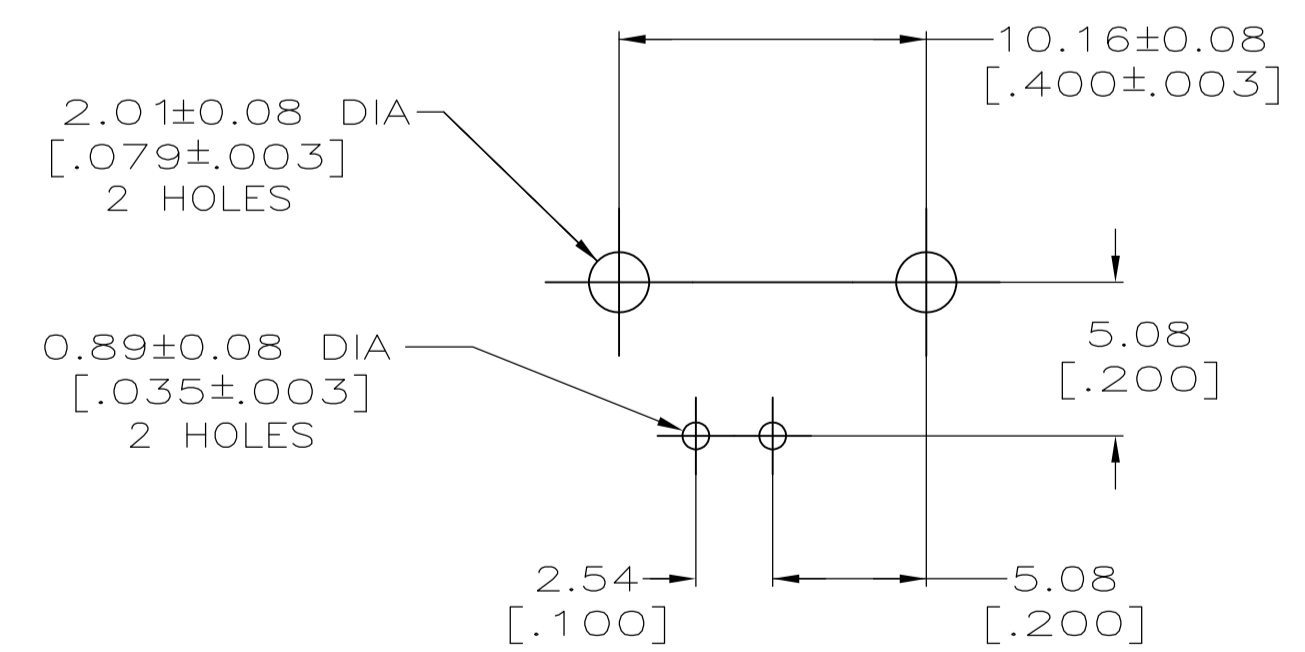
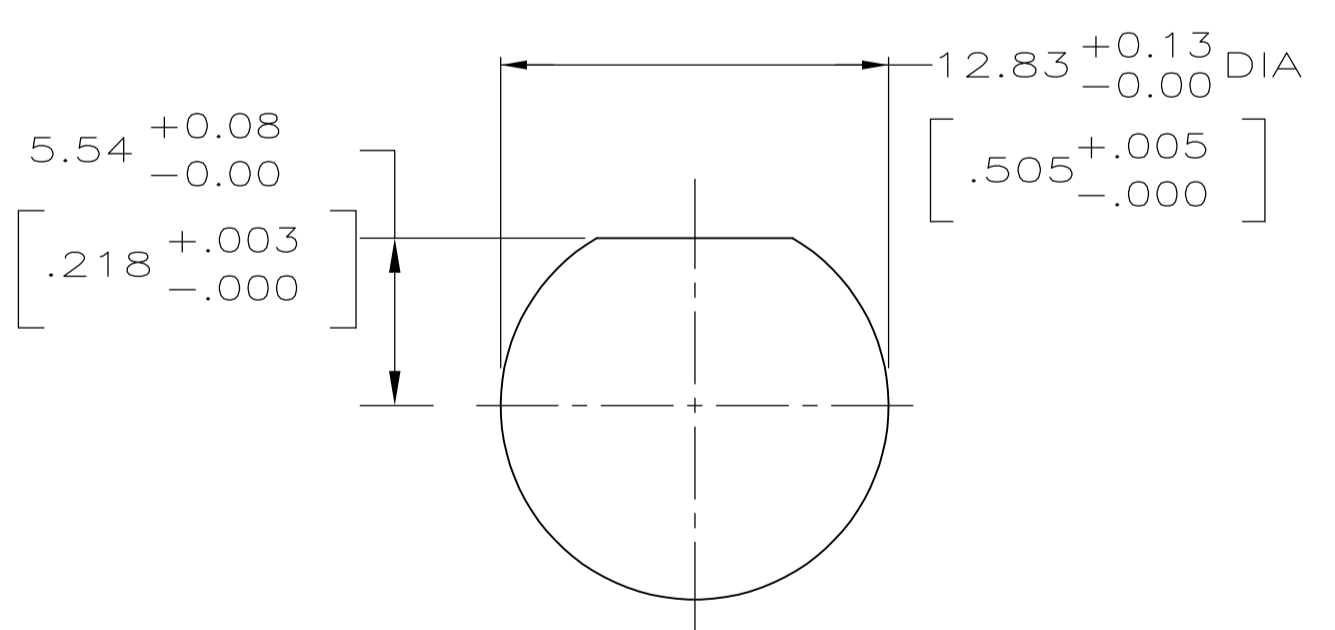
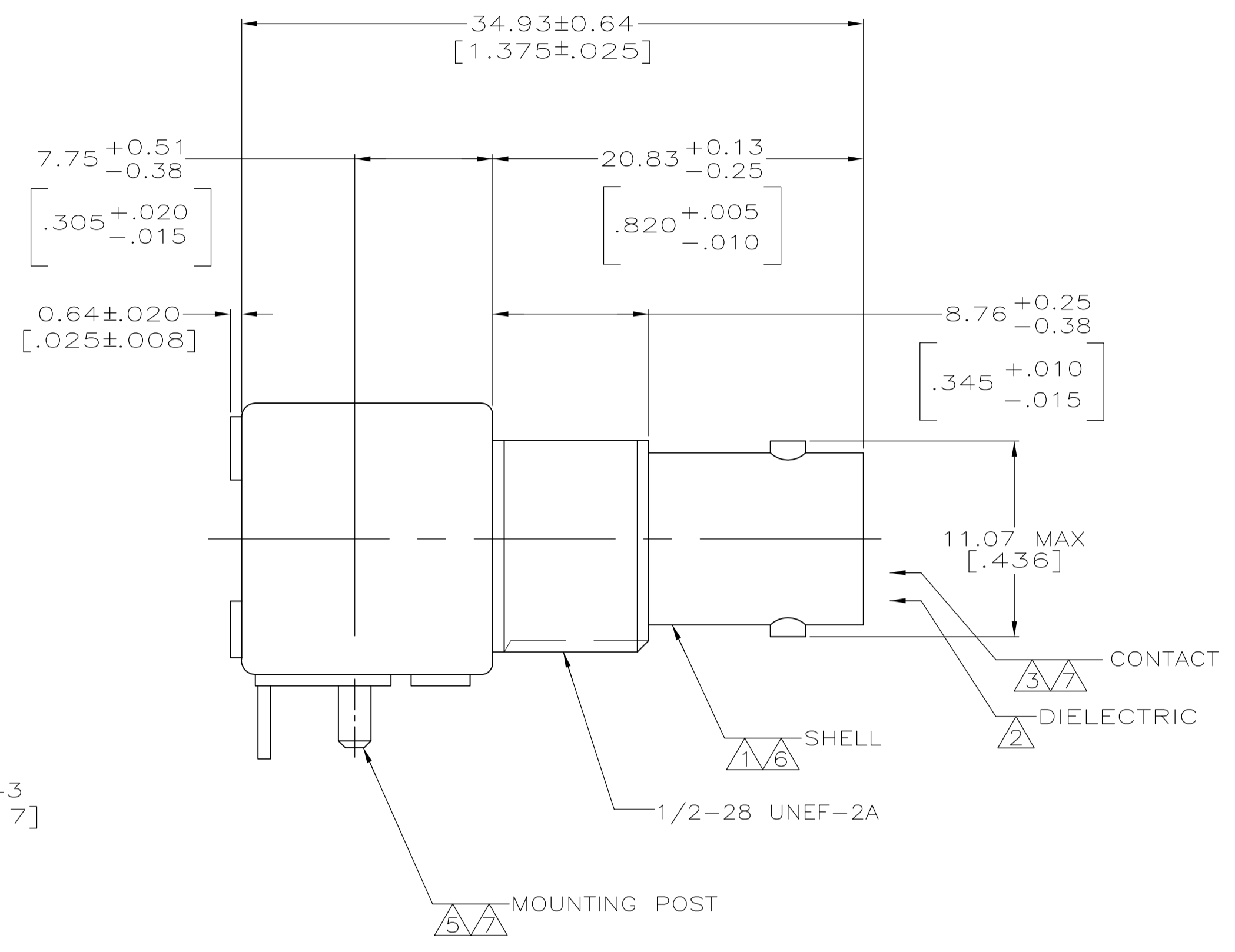
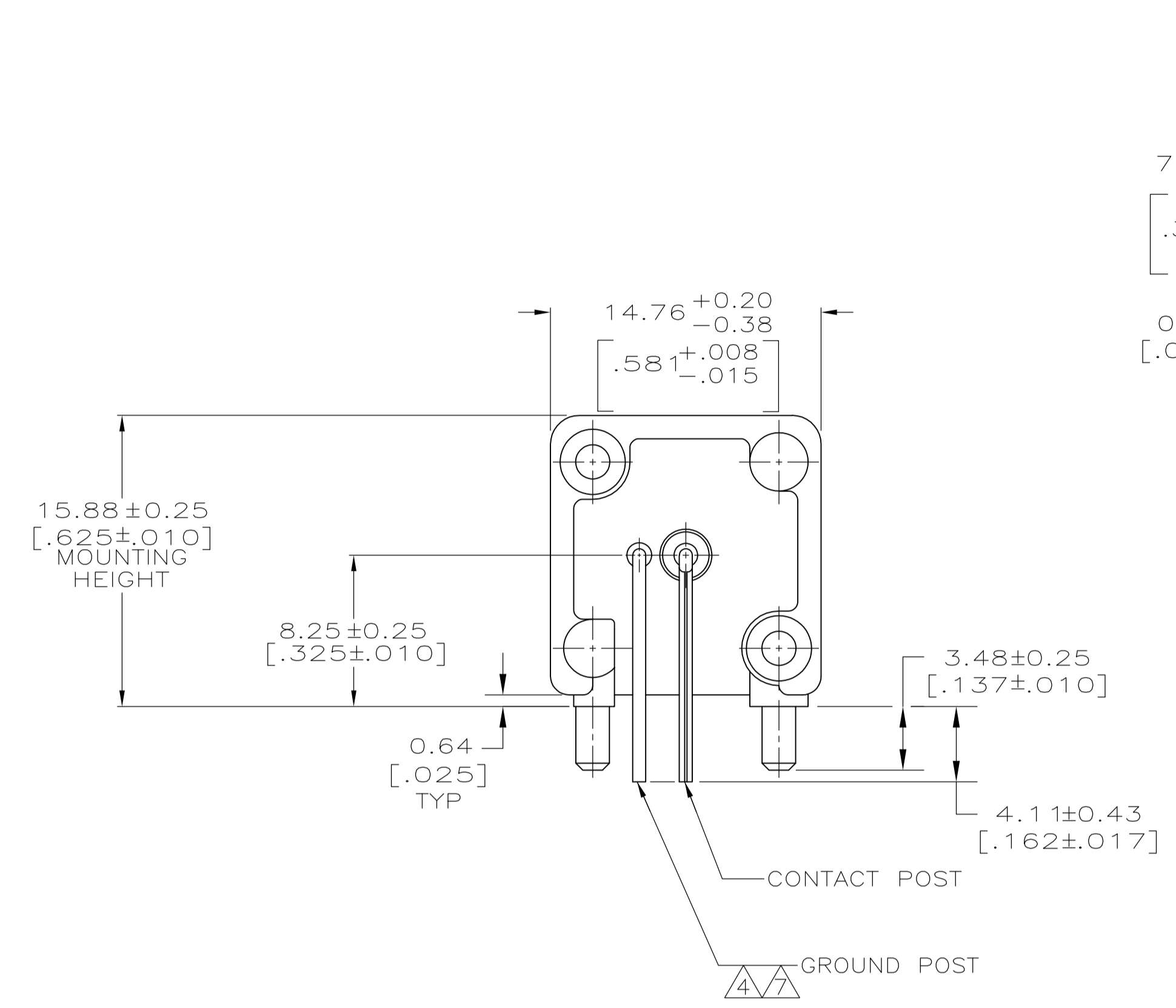


LOC	DIST	REVISIONS			
		REV	DESCRIPTION	DATE	BY
AJ	16	A1	REVISED PER ECO-11-005030	11MAR11	RK HMR



- 1 ZINC PER QQ-Z-363.
- 2 POLYMETHYLPENTENE PER ASTM-D-1238.
- 3 PHOSPHOR BRONZE PER QQ-B-750.
- 4 BRASS PER ASTM-B-453.
- 5 BRASS PER ASTM-B-16.
- 6 NICKEL PLATE PER QQ-N-290, $3.81 \mu\text{m}$ [$.000150$] MINIMUM THICK.
- 7 TIN PLATE PER ASTM-B-545, $3.81 \mu\text{m}$ [$.000150$] MINIMUM THICK.
8. SEE INSTRUCTION SHEET 408-2769.

RECOMMENDED PANEL CUTOUT

PCB CONFIGURATION

5227661-1
PART NUMBER

THIS DRAWING IS A CONTROLLED DOCUMENT.		DIN J. ALCORTA - 26APR2005		STE TE Connectivity	
DIMENSIONS: mm [INCHES]		CHK J. HAVENER 26APR2005		NAME	
TOLERANCES UNLESS OTHERWISE SPECIFIED:		APVD J. LIPPERT 26APR2005		PRODUCT SPEC	
0 PLC ± -		APPLICATION SPEC		108-12078	
1 PLC ± -		SIZE		A1	
2 PLC ± 0.05 [.002]		CAGE CODE		00779	
3 PLC ± -		DRAWING NO		5227661	
4 PLC ± -		WEIGHT		-	
ANGLES ± -		CUSTOMER DRAWING		SCALE 4:1 SHEET 1 OF 1 REV A1	