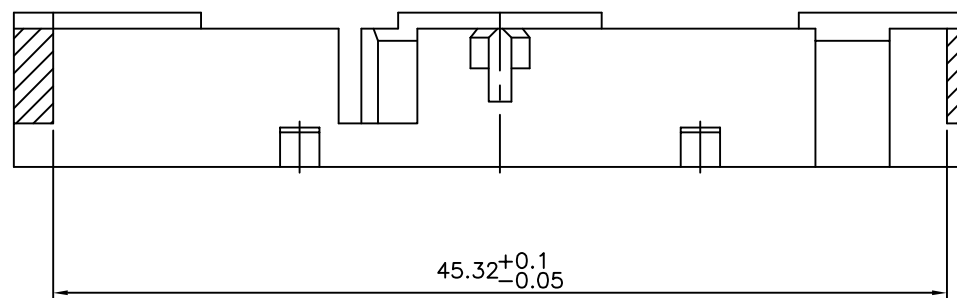
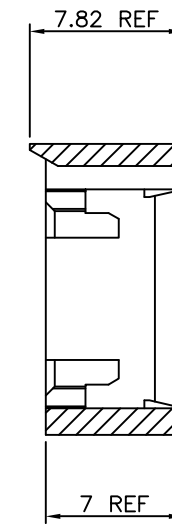
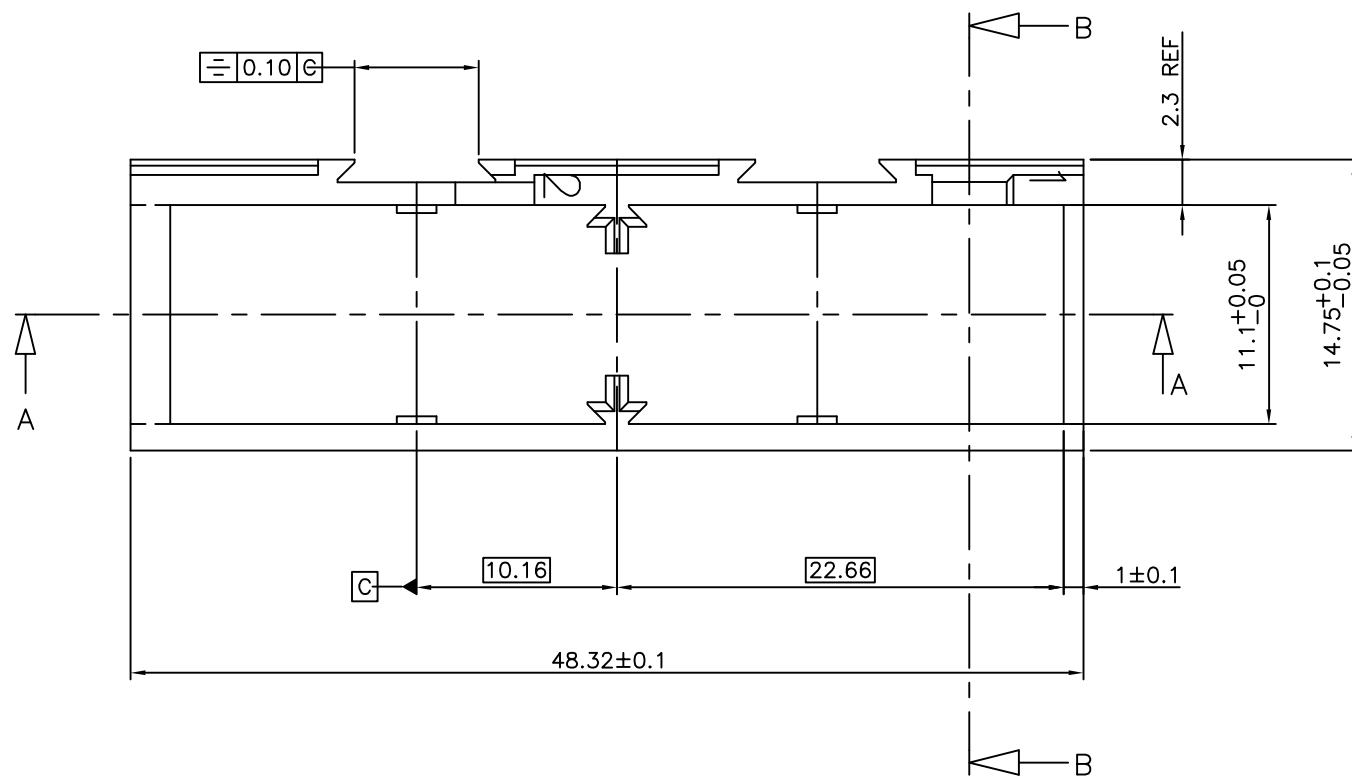


PRODUCT NUMBER	COLOR	REMARK
65185-001	BLACK	SEE NOTE
65185-002	GREY	SEE NOTE



SECTION A-A

NOTES:-

1. THIS PRODUCT MEETS EUROPEAN UNION DIRECTIVES AND OTHER COUNTRY REGULATIONS AS DESCRIBED IN GS-22-008.
2. LEADFREE OR RoHS DIRECTIVE LABELLING TO BE PROVIDED AS PER GS-14-920.
3. " LF " SUFFIX TO PRODUCT NUMBER FOR RoHS COMPATIBLE/ LEADFREE VERSION.
4. PARTS WITH AND WITHOUT "LF " SUFFIX ARE FORM-FIT AND FUNCTIONALLY IDENTICAL. " LF " SUFFIX PROVIDED FOR PART NUMBER STANDARDISATION OF PART THAT MEETS RoHS REQUIREMENTS.

NOTE:
MATERIAL: MODIFIED POLYPHENYLENE OXYDE
FLAME RETARDANT PER UL 94 V1
COLOR: BLACK OR GREY.

mat'l. code		surface		tolerance		projection		product family	
SEE NOTE		ISO 1302		ISO 406 ISO 1101		mm		BACKPANEL	
ltr	ecn no	dr	date	tolerances unless otherwise specified		mm		title	
D	F00406	LLA	2000-05-22	angles	linear	mm		LOCKING FRAME	
E	F10138	GCO	2001-02-08			mm		2 MODULES	
F	I05-0042	MINI	2005-03-17			scale -		dwg no	
G	I05-0248	MINI	2005-11-22	dr	G.CORBOZ	2001-02-08		sheet 1 of 1	
H	I06-0068	MINI	2006-06-01	enr	J.F.NOTTEAU	2001-02-08		size	
				chr	RAKHEE GEORGE	2006-06-01		A3	
				appd	RAKHEE GEORGE	2006-06-01		type	
sheet	revision	H						Product Customer Drawing	
index	sheet	1							