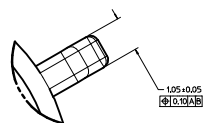
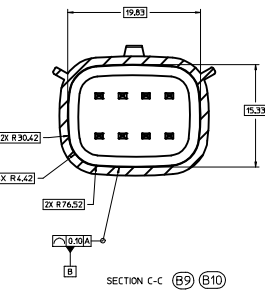
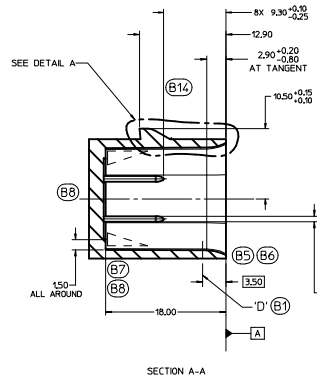
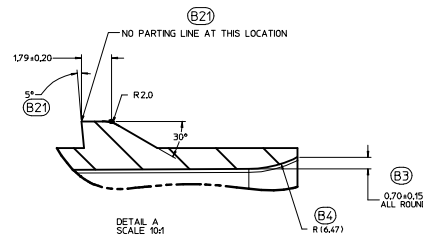
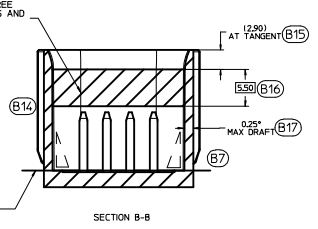
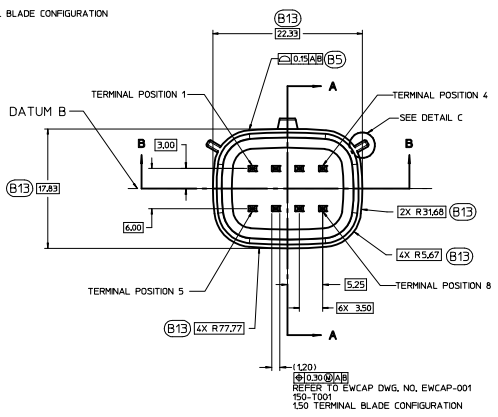
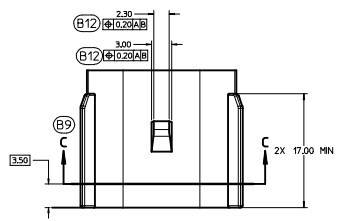
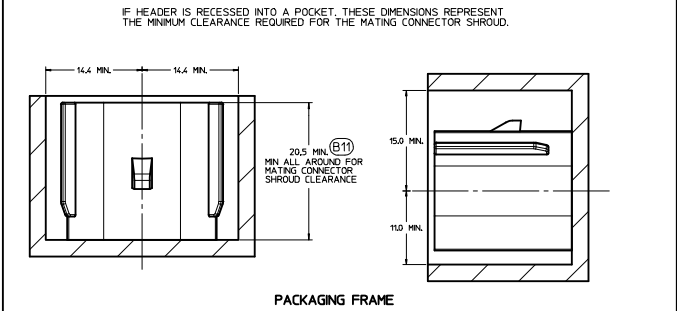


150-S-008-2-002	D	BLACK
150-S-008-2-002	C	DK GRAY
150-S-008-2-802	B	LT GRAY
150-S-008-2-A02	A	BLACK



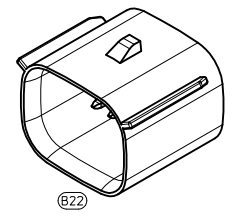
DETAIL C SCALE 20:1
APPLICABLE TO ALL KEYING OPTION VIEWS FOR POSITIONS

CONSTRUCTION BELOW THIS SURFACE IS NOT CONTROLLED BY EWCAP. NO PLASTIC FEATURES MAY EXTEND ABOVE THIS SURFACE.



NOTICE
THIS DRAWING OR PORTIONS OF IT, ARE CONTROLLED BY THE ELECTRICAL WIRING COMPONENTS APPLICATION PARTNERSHIP (EWCAP), A SUBGROUP OF THE UNITED STATES CONSORTIUM FOR AUTOMOTIVE RESEARCH LLC (USCAR). USCAR IS A PARTNERSHIP BETWEEN CHRYSLER GROUP LLC, FORD MOTOR COMPANY, AND GENERAL MOTORS CORPORATION ANY CHANGE TO A EWCAP CONTROLLED PORTION OF THIS DRAWING, INCLUDING A "RECORD CHANGE" MUST BE APPROVED, IN WRITING, BY THE RESPONSIBLE EWCAP MEMBER FROM EACH USCAR COMPANY. EACH EWCAP MEMBER AUTHORIZED TO SIGN FOR HIS OR HER COMPANY IS RESPONSIBLE FOR OBTAINING ALL NECESSARY APPROVALS WITHIN THAT COMPANY PRIOR TO SIGNING FOR APPROVAL OF THE CHANGE. EWCAP EXPRESSLY PROHIBITS ANY PARTY FROM CHANGING EITHER ANY EWCAP CONTROLLED PORTION OF THIS DRAWING OR ANY ASSOCIATED TOOLING BEFORE RECEIVING AN APPROVAL SIGNED BY AN AUTHORIZED REPRESENTATIVE FROM EACH EWCAP PARTNER. REFERENCE TO THE SIGNED APPROVAL FORM MUST BE ENTERED IN THIS DRAWING'S CONTROL COLUMN.

- NOTES: UNLESS OTHERWISE SPECIFIED
- ALL DIMENSIONS SHOWN IN MILLIMETERS.
 - DIMENSIONING AND TOLERANCING PER ASME Y14.5M-1994
 - 0.25 RADI ON ALL CORNERS SHOWN SHARP.
 - UNSPECIFIED RADI: 0.25 EXCEPT AS NOTED.
 - STANDARD COLORS FOR POLARIZATION (SEE CHART). DEVIATION REQUIRES APPROVAL OF AUTHORIZED PERSON.
 - REFER TO "SAE/USCAR 12 CONNECTOR GUIDELINES" FOR ADDITIONAL REQUIREMENTS.
 - EXCEPT WHERE NOTED, DRAFT ON OUTSIDE SURFACES IS PERMISSIBLE WITHIN TOLERANCE.
 - SYMBOL INDICATES DRAFT DIRECTION.
 - FOR TERMINAL MATERIAL, DIMENSIONAL, AND COATING REQUIREMENTS AND ANY BLADE TERMINAL DESIGN INFORMATION NOT SHOWN ON THIS DRAWING SEE EWCAP DRW. NO. EWCAP-001
 - A FULL SHROUD ON THE MATING CONNECTOR IS REQUIRED TO INSURE THAT THE CONNECTOR-HEADER POLARIZATION FEATURES OPTIONS A THRU D WILL FUNCTION. THE FULL SHROUD ALSO PREVENTS SCOP DAMAGE TO THE HEADER PINS. REFER TO "SAE/USCAR-12 CONNECTOR DESIGN GUIDE LINES" FOR ADDITIONAL INFORMATION.
 - REFER TO USCAR/EWCAP PART LIST AS FOUND ON WEBSITE <http://www.uscarcorp.com>
 - THIS IS A 100% CAD GENERATED PART. THE CAD MATHEMATICAL DATA IS THE MASTER FOR THIS PART. FOR DIMENSIONAL OR ANY INFORMATION NOT SHOWN ON THIS DRAWING, ANALYZE THE CAD MODEL.



REV	DATE	BY	CHK	DESCRIPTION
095	B22			CHANGED ISO VIEW SCALE TO 4:1. WAS 1:1
095	B21			ADDED PARTING LINE NOTE TO DETAIL A. DIM. 14.4
095	B20			CORRECTED CHRYSLER GROUP LLC NOMENCLATURE
095	B19			MOVED NOTE TO SECTION B-B
095	B18			UPDATED NOTES
095	B17			REMOVED 15.20 AND 2.50 FROM SECTION A-A
095	B16			ADDED [3.50]
095	B15			ADDED AT TANGENT NOTE
095	B14			REMOVED DATUM D
095	B13			ADDED BASIC DIMENSIONS FOR PROFILE CONTROL
095	B12			ADDED [10.20] [A]
095	B11			DIMENSIONED TO DATUM A
095	B10			SEALING SURFACE DIMENSIONS MOVED TO SECTION C-C
095	B9			ADDED SECTION C-C
095	B8			REMOVED 15.20 AND 2.50 FROM SECTION A-A
095	B7			ADDED DRAFT ANGLE DIRECTION
095	B6			REMOVED 0.20 ±0.10 ±0.20 ALL AROUND
095	B5			REPLACED WALL THICKNESS CONTROL WITH DRAFFLE OF A SURFACE
095	B4			ADDED R16.71
095	B3			ADDED 0.70 ±0.15 ALL AROUND
095	B2			UPDATED CONNECTOR COLORS
095	B1			SURFACE 17 RELOCATED TO [3.50] WAS AT 8.20
095	A	RELEASED		

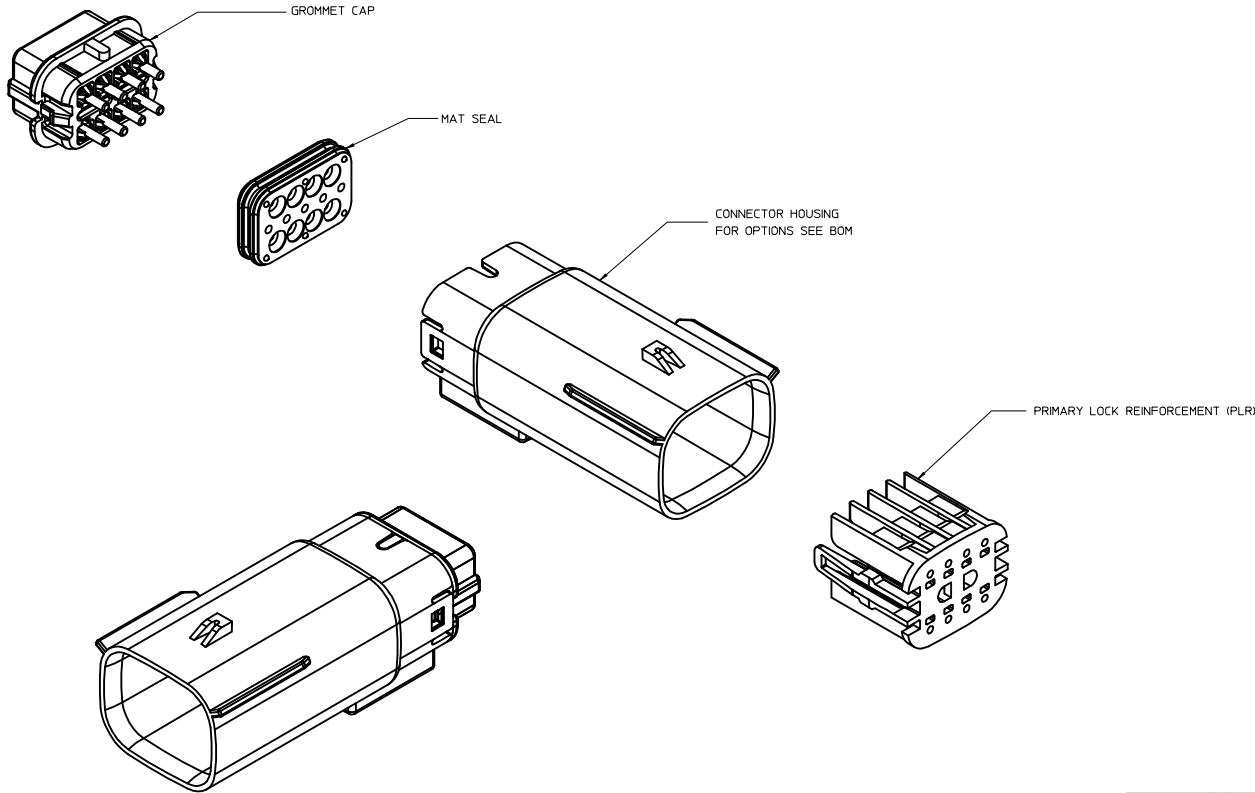
LET	REVISION RECORD	DATE	DWN	CHK

TOLERANCES UNLESS OTHERWISE SPECIFIED			
DIMENSIONS ARE IN MILLIMETERS			
FRAMES	ANGLES	XX	XXX
±0.2	±3°	±0.10	±0.10

SCALE	4:1	DRAWN BY	K.LUNNINGHAM	DESIGNED BY	J.VANSLAMBROUCK	DATE	03-21-12
TITLE	DIRECT CONNECT INTERFACE 8 WAY (2 X 4) 1.5 MM SEALED MALE						
SHEET	DRWG. NUMBER	REV	DATE	DO NOT SCALE DRAWING	REVISION LEVEL		
10F-1	150-S-008-2-202	E		CONFORM AND DIMS	B		



TABLE OF CONTENTS	
SHEET NO.	SHEET DESCRIPTION
1	NOTES
2	KEY CONFIGURATIONS
3	BLADE SEALED ASSEMBLY
4	SYSTEM PACKAGING
5	BACKSHELL NOTES
6	BACKSHELL
7	BACKSHELL CONFIGURATIONS
8-9	BOM



NOTES: VALID UNLESS OTHERWISE SPECIFIED

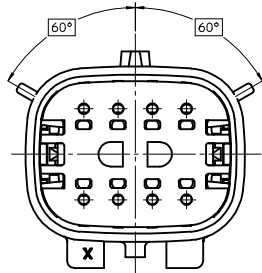
- 1. GENERAL:**
- a. APPLICATION SPECIFICATION SEE: AS-33472-100
 - CONTAINS: PRODUCT INTRODUCTION, PRODUCT SUMMARY, CONNECTOR ASSEMBLY, PACKAGING INFORMATION, CONNECTOR MATING, SERVICE INSTRUCTIONS, ELECTRICAL CONTINUITY CHECKING, CRIMPING, AND TROUBLESHOOTING
 - DESIGNED TO MATE WITH RECEPTACLE SEALED ASSEMBLY SPECIFIED IN MOLEX DRAWING SD-33472-081
 - FOR 15mm RECEPTACLE TERMINALS TO BE USED WITH THIS ASSEMBLY. SEE MOLEX DRAWING SD-33000-001.
 - SYSTEM TO BE USED WITH WIRE WITHIN DIAMETER RANGE OF 12mm TO 2.69mm.
 - ASSEMBLY SHIPPED WITH PLR IN PRE-LOCK POSITION.
 - IN THE EVENT THAT THE PLR IS FOUND IN THE SEATED (FINAL LOCK) POSITION, REFER TO MOLEX SPECIFICATION PS-34646-001, AVAILABLE AT www.molex.com <<http://www.molex.com>>.
 - ASSEMBLY CONFORMS TO SAE/USCAR-2 REV.4 WITH THE FOLLOWING EXCEPTIONS: TERMINAL INSERTION FORCE FOR WIRE DIAMETER ABOVE 2.5mm NOT EXCEEDING 2.69mm SHALL NOT EXCEED 45 NEWTONS.
 - b. PRODUCT SPECIFICATION SEE: PS-33472-000
 - CONTAINS: PRODUCT INTRODUCTION, PRODUCT SUMMARY, RATINGS (CURRENT, TEMPERATURE, SEALING, AND FLAMMABILITY), AND PRODUCT VALIDATION.
 - c. PACKAGING SPECIFICATION PER MOLEX DRAWING: PK-31300-635
 - d. PARTS MUST BE IN COMPLIANCE TO MOLEX (CHEMICAL SUBSTANCES FOR PRODUCTS AND PACKAGING SPECIFICATION: ES-40000-5016
 - e. DATA MUST BE SUBMITTED UNDER THE MOLEX PART NUMBER TO IMDS (COMPANY ID#13255)
- 2. DESIGN - MATERIALS:**
- a. SEE BOM TABLE
- 3. DESIGN - GEOMETRY:**
- a. THIS IS A 100% CAD GENERATED PART. THE CAD MATHEMATICAL DATA IS THE MASTER FOR THIS PART. FOR DIMENSIONAL OR ANY INFORMATION NOT SHOWN ON THIS DRAWING, ANALYZE THE CAD MODEL.
 - b. GEOMETRIC DIMENSIONS AND TOLERANCES PER ASME Y14.5M - 1994
 - c. EDGES AND UNDIMENSIONED DETAILS PER ISO13715
 - d. CORNERS SHOWN AS SHARP TO BE R 0.2 MAX.
 - e. LETTERING SHALL BE 0.15 MAX RAISED IN 0.25 MAX RECESS PAD. THIS INCLUDES RECYCLING CODE, CAVITY ID, VENDOR IDENTIFICATION, AND CUSTOMER MATERIAL NUMBER.
 - f. VISUAL DEFECTS SHALL MEET COSMETIC STANDARD PS-45499-002 (Class B) CAD MODEL.
 - g. LASER MARKING: TBD

INSPECTION LOG
 LAST NUMBER USED:
 ADDED:
 REMOVED:

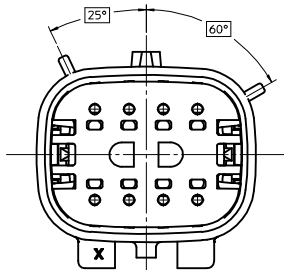
REV	DESCRIPTION
AH	UPDATED GROMMET CAP
AG1	RENAMED BACKSHELLS
AG	ADDED NEW P/N 33482-0857 33482-0858 33482-0859
AF1	UPDATED DIMENSIONS TO MATCH MODEL
AF	ADDED NEW P/N 33482-0854 33482-0855 33482-0856
AE	COLOR REPLACEMENT FOR KEY C AND D PER USCAR STANDARD
AD	REDRAWN, ADDED BACKSHELL

REVISED	EC NO.	DRAWN BY	DATE	CHECKED BY	DATE	APPROVED BY	DATE	DIMENSION STYLE		SCALE	DESIGN UNITS	THIRD ANGLE PROJECTION	
								MM ONLY	3:1	METRIC			
REVISED	UJAU2013-1476	DMARCOUX	06-17-02	DGRIFFI THS	06-17-02	VKOSHY	2010/10/27	MM ONLY	3:1	METRIC	THIRD ANGLE PROJECTION		
2013/03/17	2013/03/20	2013/03/26											
DRWN:JRUTTER	CHKD:APROFFITT	APPR:VKOSHY											
QUALITY SYMBOLS ▽=0 ▽=0 ▽=0								GENERAL TOLERANCES (UNLESS SPECIFIED) mm INCH 4 PLACES ± --- ± --- 3 PLACES ± --- ± --- 2 PLACES ± 0.10 ± --- 1 PLACE ± 0.3 ± --- 0 PLACE ± ±		MATERIAL NO. SEE BOM		DOCUMENT NO. SD-33482-081	SHEET NO. 1 OF 9
ANGLUAR ± 3 ° DRAFT WHERE APPLICABLE MUST REMAIN WITHIN DIMENSIONS								THIS DRAWING CONTAINS INFORMATION THAT IS PROPRIETARY TO MOLEX INCORPORATED AND SHOULD NOT BE USED WITHOUT WRITTEN PERMISSION					

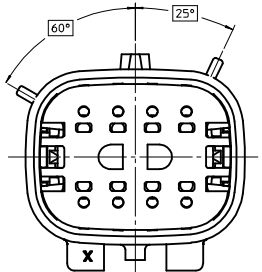
KEY CONFIGURATIONS



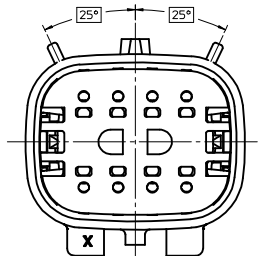
KEY A



KEY B



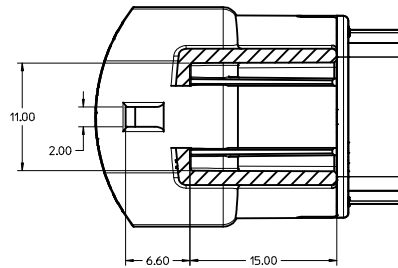
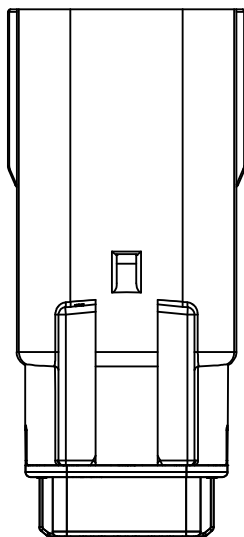
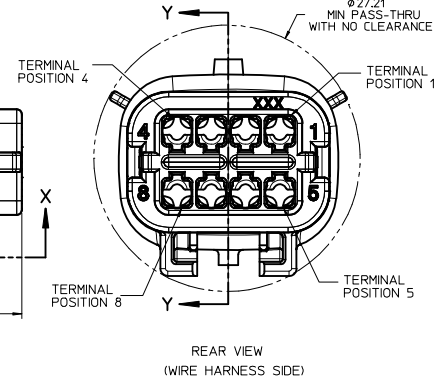
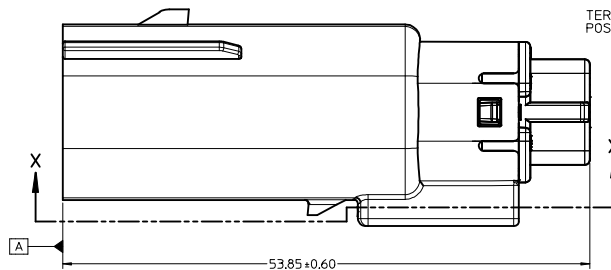
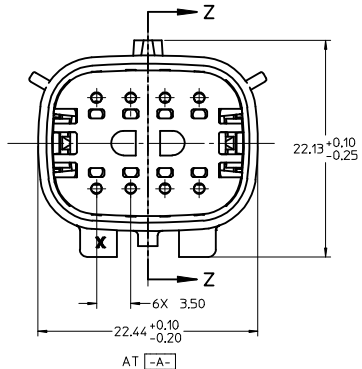
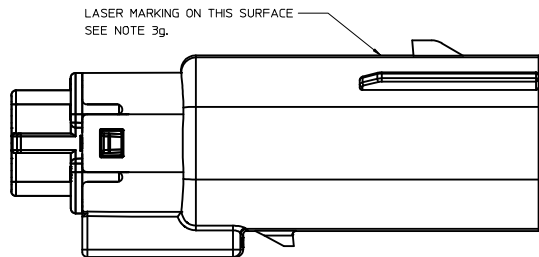
KEY C



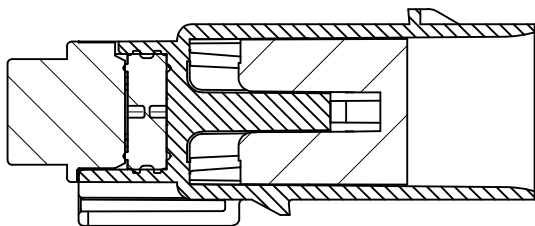
KEY D

REVISED IEC NO: UAU2013-1476 DRAWN: RITTER 2013/03/17 CHKD: PROFFITT 2013/03/20 APPR: VKOSHY 2013/03/26 AH	QUALITY SYMBOLS	GENERAL TOLERANCES (UNLESS SPECIFIED)	DIMENSION STYLE	SCALE	DESIGN UNITS	THIRD ANGLE PROJECTION
	▽=0	mm INCH	MM ONLY	4:1	METRIC	
	▽=0	4 PLACES ± --- ± ---	DRAWN BY DATE			TITLE
	▽=0	3 PLACES ± --- ± ---	DMARCOUX 06-17-02			MX150 2X4 BLADE SEALED ASSEMBLY MAT SEAL
	2 PLACES ± 0.10 ± ---	CHECKED BY DATE				
	1 PLACE ± 0.3 ± ---	DGRIFITHS 06-17-02				
	0 PLACE ± ±	APPROVED BY DATE				
		VKOSHY 2010/10/27				
		ANGULAR ± 3 °	MATERIAL NO.		DOCUMENT NO.	SHEET NO.
		DRAFT WHERE APPLICABLE MUST REMAIN WITHIN DIMENSIONS	SEE BOM		SD-33482-081	2 OF 9
			THIS DRAWING CONTAINS INFORMATION THAT IS PROPRIETARY TO MOLEX INCORPORATED AND SHOULD NOT BE USED WITHOUT WRITTEN PERMISSION			

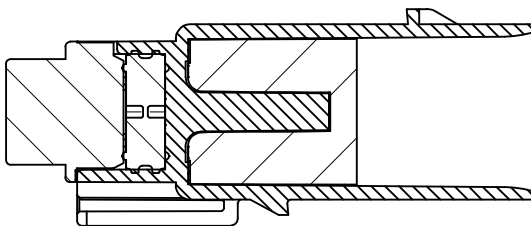
BLADE SEALED ASSEMBLY



Partial X-X
SCALE 4:1

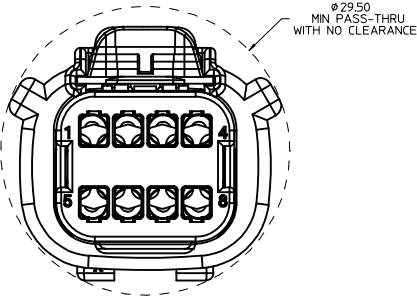
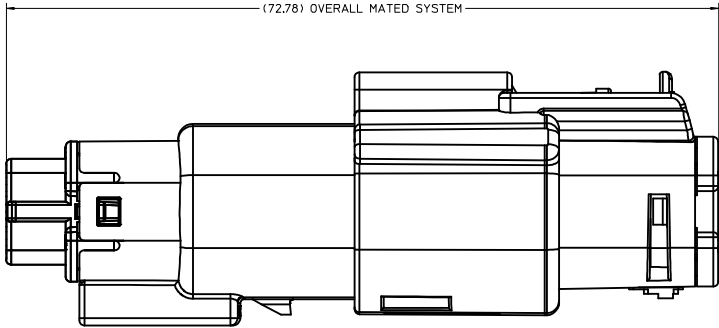


PRIMARY LOCK REINFORCEMENT (PLR) SHOWN
IN THE PRE-STAGED POSITION
SECTION Z-Z



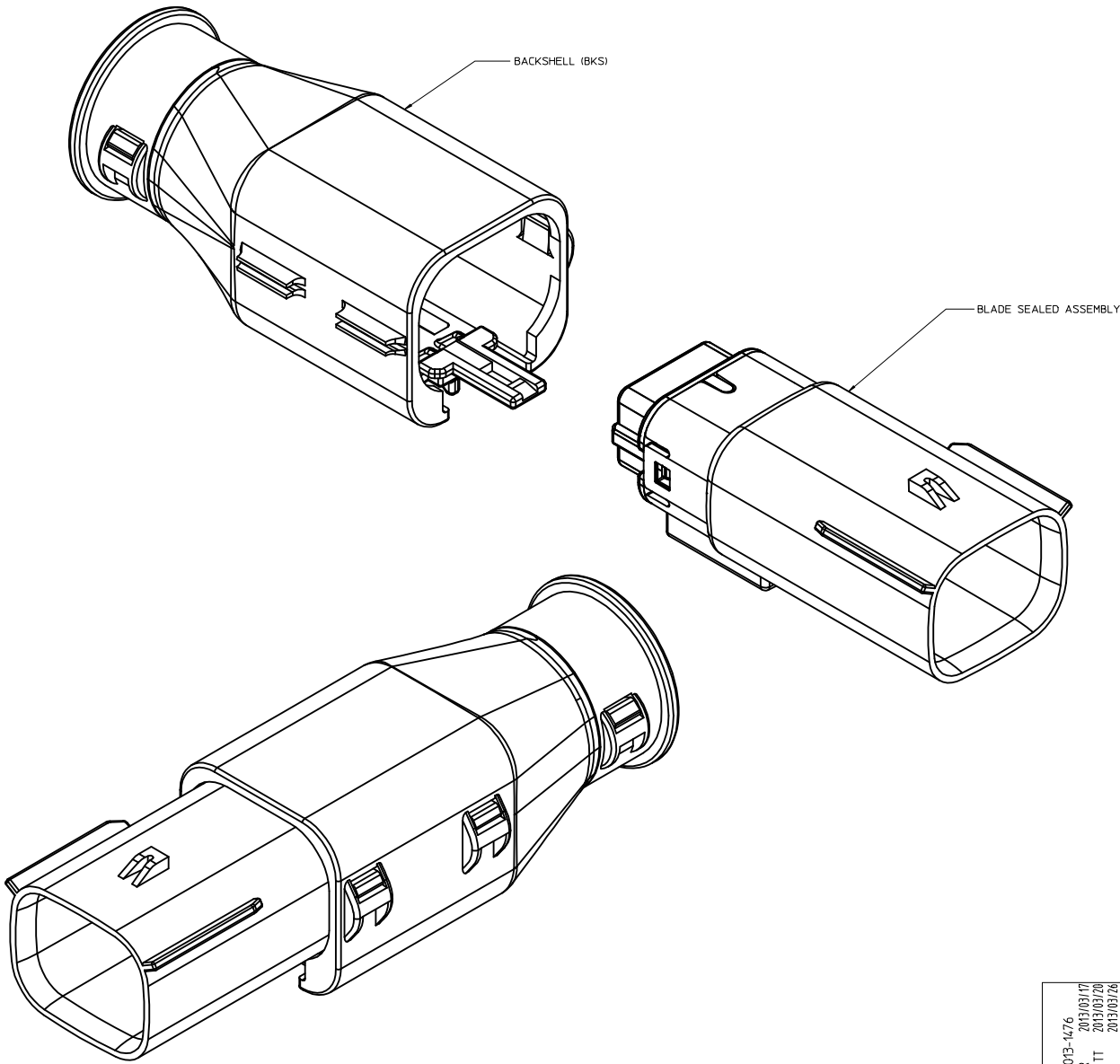
PRIMARY LOCK REINFORCEMENT (PLR) SHOWN
IN THE FINAL-LOCK POSITION
SECTION Y-Y

REVISED IEC NO. UAU2013-1476 DRAWN BY: CHYK/PROFFITT CHECKED BY: APPR:VKOSHY DATE: 2013/03/17 DATE: 2013/03/20 DATE: 2013/03/26 AH	QUALITY SYMBOLS	GENERAL TOLERANCES (UNLESS SPECIFIED)	DIMENSION STYLE	SCALE	DESIGN UNITS	THIRD ANGLE PROJECTION	
	∇=0 ∇=0 ∇=0	4 PLACES ± mm 3 PLACES ± INCH 2 PLACES ± 0.10 1 PLACE ± 0.3 0 PLACE ±	MM ONLY	4:1	METRIC	DRAWN BY: DMARCOUX CHECKED BY: DGRIFITHS APPROVED BY: VKOSHY DATE: 06-17-02 DATE: 06-17-02 DATE: 2010/10/27	MX150 2X4 BLADE SEALED ASSEMBLY MAT SEAL molex
	ANGULAR ± 3 ° DRAFT WHERE APPLICABLE MUST REMAIN WITHIN DIMENSIONS	MATERIAL NO.: SEE BOM SIZE: D	DOCUMENT NO.: SD-33482-081 SHEET NO.: 3 OF 9				
	THIS DRAWING CONTAINS INFORMATION THAT IS PROPRIETARY TO MOLEX INCORPORATED AND SHOULD NOT BE USED WITHOUT WRITTEN PERMISSION						



REVISED IEC NO. UAU2013-1476 DRAWN BY: J. RITTER CHKD: APPROFIT APPR: VKOSHY 2013/03/17 2013/03/20 2013/03/26 AH	QUALITY SYMBOLS	GENERAL TOLERANCES (UNLESS SPECIFIED)	DIMENSION STYLE	SCALE	DESIGN UNITS	THIRD ANGLE PROJECTION
	∇=0 ∇=0 ∇=0	mm INCH 4 PLACES ± --- ± --- 3 PLACES ± --- ± --- 2 PLACES ± 0.10 ± --- 1 PLACE ± 0.3 ± --- 0 PLACE ± ±	MM ONLY	4:1	METRIC	MX150 2X4 BLADE SEALED ASSEMBLY MAT SEAL molex
	ANGLAR ± 3 ° DRAFT WHERE APPLICABLE MUST REMAIN WITHIN DIMENSIONS	DRAWN BY: DMARCOUX CHECKED BY: DGRIFFITHS APPROVED BY: VKOSHY DATE: 06-17-02 DATE: 06-17-02 DATE: 2010/10/27	MATERIAL NO. SEE BOM DOCUMENT NO. SD-33482-081	SHEET NO. 4 OF 9		
	THIS DRAWING CONTAINS INFORMATION THAT IS PROPRIETARY TO MOLEX INCORPORATED AND SHOULD NOT BE USED WITHOUT WRITTEN PERMISSION					

BACKSHELL NOTES



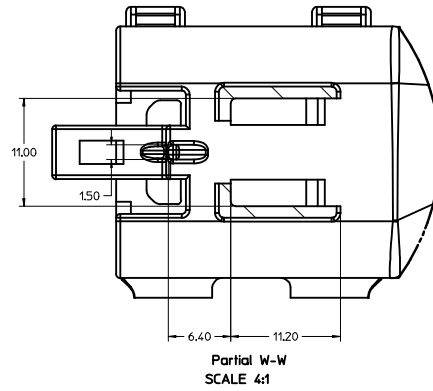
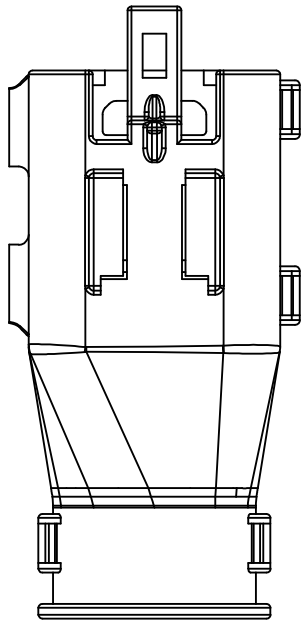
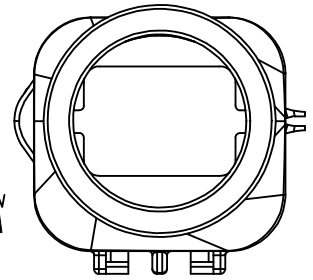
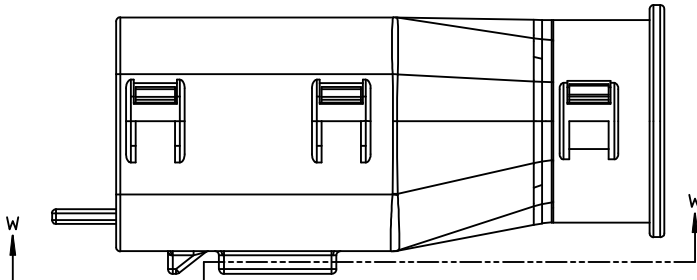
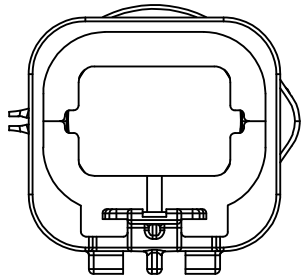
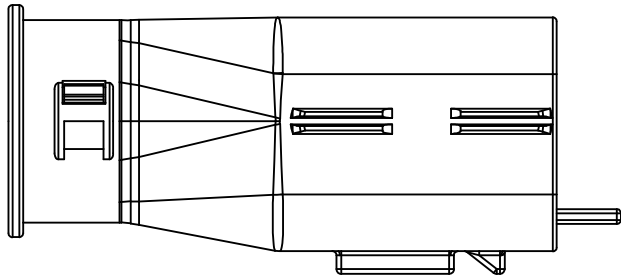
BACKSHELL NOTES: VALID UNLESS OTHERWISE SPECIFIED

1. GENERAL:
 - a. APPLICATION SPECIFICATION SEE: AS-*****TBD*****
 - DESIGNED TO MATE WITH BLADE SEALED ASSEMBLY SPECIFIED IN MOLEX DRAWING SD-33482-081.
 - SYSTEM TO BE USED WITH WIRE WITHIN DIAMETER RANGE OF TBD TO TBD.
 - COMPONENTS ARE OPTIONAL AND MUST BE PURCHASED SEPARATELY
 - BACKSHELL DESIGN IS OWNED BY SCHLEMMER
 - b. PRODUCT SPECIFICATION SEE: PS-*****TBD*****
 - c. PACKAGING SPECIFICATION PER MOLEX DRAWING: PK-*****TBD*****
 - d. PARTS MUST BE IN COMPLIANCE TO MOLEX CHEMICAL SUBSTANCES FOR PRODUCTS AND PACKAGING SPECIFICATION: ES-40000-5016
 - e. DATA MUST BE SUBMITTED UNDER THE MOLEX PART NUMBER TO IMDS (COMPANY ID#13255)
2. DESIGN - MATERIALS:
 - a. PA66 0% GLASS FILLED
 - b. BLACK
3. DESIGN - GEOMETRY:
 - a. THIS IS A 100% CAD GENERATED PART. THE CAD MATHEMATICAL DATA IS THE MASTER FOR THIS PART. FOR DIMENSIONAL OR ANY INFORMATION NOT SHOWN ON THIS DRAWING, ANALYZE THE CAD MODEL.
 - b. GEOMETRIC DIMENSIONS AND TOLERANCES PER ASME Y14.5M - 2009
 - c. EDGES AND UNDIMENSIONED DETAILS PER ISO13715
 - d. CORNERS SHOWN AS SHARP TO BE R 0.2 MAX.
 - e. VISUAL DEFECTS SHALL MEET COSMETIC STANDARD PS-45499-002 (Class B) CAD MODEL.

REVISED IEC NO. UAU2013-1476 DRAWN BY: J. RUTTER CHECKED BY: T. PROFFITT APPR: VKOSHY 2013/03/17 2013/03/20 2013/03/26	QUALITY SYMBOLS	GENERAL TOLERANCES (UNLESS SPECIFIED)	DIMENSION STYLE	SCALE	DESIGN UNITS	THIRD ANGLE PROJECTION
	▽=0	mm INCH	MM ONLY	4:1	METRIC	☉
	▽=0	4 PLACES ±0.10	DRAWN BY: DMARCOUX	DATE: 06-17-02	MX150 2X4 BLADE SEALED ASSEMBLY MAT SEAL molex MATERIAL NO. SEE BOM DOCUMENT NO. SD-33482-081	
	▽=0	3 PLACES ±0.10	CHECKED BY: DGRIFITHS	DATE: 06-17-02		
▽=0	2 PLACES ±0.3	APPROVED BY: VKOSHY	DATE: 2010/10/27			
REV: AH	DESCRIPTION	ANGULAR ± 3 °	DRAFT WHERE APPLICABLE MUST REMAIN WITHIN DIMENSIONS		SHEET NO. 5 OF 9	

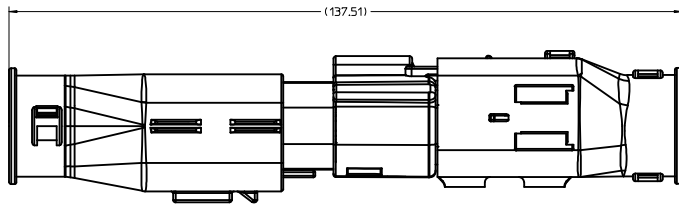
20 19 18 17 16 15 14 13 12 11 10 9 8 7 6 5 4 3 2 1

BACKSHELL

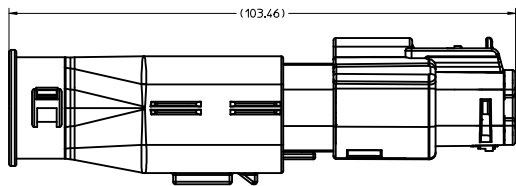
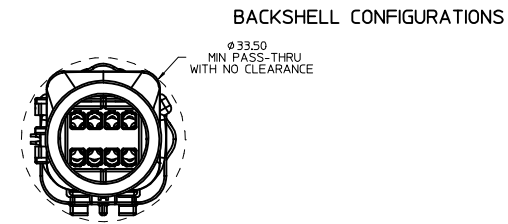


REVISED IEC NO. UAU2013-1476 DRAWN BY: CHYDAPROFF/IT APPR: VKOSHY 2013/03/17 2013/03/20 2013/03/26 DESCRIPTION	QUALITY SYMBOLS	GENERAL TOLERANCES (UNLESS SPECIFIED)	DIMENSION STYLE	SCALE	DESIGN UNITS	THIRD ANGLE PROJECTION	
	∇=0 ∇=0 ∇=0	4 PLACES ± mm 3 PLACES ± mm 2 PLACES ± 0.10 1 PLACE ± 0.3 0 PLACE ±	mm INCH ± --- ± --- ± --- ± --- ± --- ± --- ± ±	MM ONLY DRAWN BY: DMARCOUX DATE: 06-17-02 CHECKED BY: DGRIFITHS DATE: 06-17-02 APPROVED BY: VKOSHY DATE: 2010/10/27	4:1	METRIC	MX150 2X4 BLADE SEALED ASSEMBLY MAT SEAL molex
	ANGULAR ± 3 ° DRAFT WHERE APPLICABLE MUST REMAIN WITHIN DIMENSIONS	MATERIAL NO. SEE BOM	DOCUMENT NO. SD-33482-081	SHEET NO. 6 OF 9			
	SIZE D	THIS DRAWING CONTAINS INFORMATION THAT IS PROPRIETARY TO MOLEX INCORPORATED AND SHOULD NOT BE USED WITHOUT WRITTEN PERMISSION					

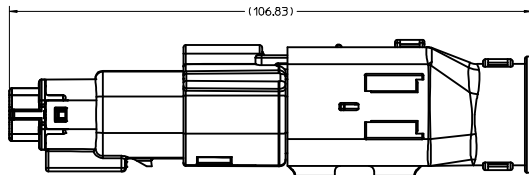
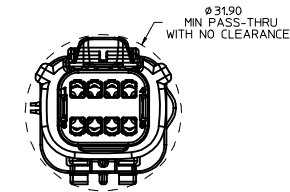
19 18 17 16 15 14 13 12 11 10 9 8 7 6 5 4 3 2 1



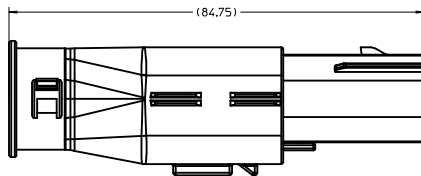
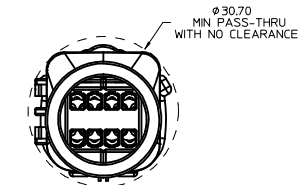
OVERALL MATED SYSTEM WITH BLADE AND RECEPTACLE BACKSHELL



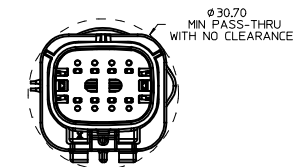
OVERALL MATED SYSTEM WITH BLADE BACKSHELL



OVERALL MATED SYSTEM WITH RECEPTACLE BACKSHELL



BLADE SEALED ASSEMBLY WITH BLADE BACKSHELL



REVISED IEC NO. UAU2013-1476 DRAWN BY: J. RITTER CHKD/PROFF ITT: 2013/03/20 APPR: VKOSHY 2013/03/26 AH	QUALITY SYMBOLS ∇=0 ∇=0 ∇=0	GENERAL TOLERANCES (UNLESS SPECIFIED)		DIMENSION STYLE MM ONLY	SCALE 2:1	DESIGN UNITS METRIC	THIRD ANGLE PROJECTION		
		4 PLACES ± 0.10 3 PLACES ± 0.15 2 PLACES ± 0.20 1 PLACE ± 0.30 0 PLACE ± 0.50	mm INCH	DRAWN BY: DMARCOUX DATE: 06-17-02	CHECKED BY: DGRIFITHS DATE: 06-17-02	TITLE MX150 2X4 BLADE SEALED ASSEMBLY MAT SEAL			
		ANGULAR ± 3° DRAFT WHERE APPLICABLE MUST REMAIN WITHIN DIMENSIONS	MATERIAL NO. SEE BOM	APPROVED BY: VKOSHY DATE: 2010/10/27	DOCUMENT NO. SD-33482-081				
		THIS DRAWING CONTAINS INFORMATION THAT IS PROPRIETARY TO MOLEX INCORPORATED AND SHOULD NOT BE USED WITHOUT WRITTEN PERMISSION							SHEET NO. 7 OF 9

KEY A, BLACK	33482-0840	A								GCP	2	3		5	6	8			OK TO TOOL	OK TO TOOL		
KEY B, LIGHT GRAY	33482-0839	A	B							GCP						8			OK TO TOOL	OK TO TOOL		
KEY A, BLACK	33482-0838	A								GCP	2	3		5	6	7	8		OK TO TOOL	OK TO TOOL		
KEY A, BLACK	33482-0837	A								GCP	1		4						OK TO TOOL	OK TO TOOL		
KEY A, BLACK	33482-0836	A								GCP	2	3			6	7	8		OK TO TOOL	OK TO TOOL		
KEY A, BLACK	33482-0835	A								GCP						7	8		OK TO TOOL	OK TO TOOL		
KEY A, BLACK	33482-0834	A								GCP	1	2	3	4	5	6	7	8	OK TO TOOL	OK TO TOOL		
KEY A, BLACK	33482-0833	A								GCP	1		3		5				OK TO TOOL	OK TO TOOL		
KEY A, BLACK	33482-0832	A								GCP					5	6	8		OK TO TOOL	OK TO TOOL		
KEY A, BLACK	33482-0831	A								GCP		3		5	6				OK TO TOOL	OK TO TOOL		
KEY A, BLACK	33482-0830	A								GCP						6			OK TO TOOL	OK TO TOOL		
KEY A, BLACK	33482-0829	A								GCP	2	3	4	5	6	7			OK TO TOOL	OK TO TOOL		
KEY A, BLACK	33482-0828	A								GCP		3		5					OK TO TOOL	OK TO TOOL		
KEY A, BLACK	33482-0827	A								GCP							8		OK TO TOOL	OK TO TOOL		
KEY A, BLACK	33482-0826	A								GCP	1	2	3		6	7	8		OK TO TOOL	OK TO TOOL		
VOID KEY	33482-0825																					
KEY D, GREEN	33482-0824			D						GCP	4			4	5		8	NOT RECOMMENDED	OK TO TOOL	OK TO TOOL		
KEY C, BROWN	33482-0823			C						GCP	1			4	5		8	NOT RECOMMENDED	OK TO TOOL	OK TO TOOL		
KEY B, LIGHT GRAY	33482-0822		B							GCP	1			4	5		8		OK TO TOOL	OK TO TOOL		
KEY A, BLACK	33482-0821		A							GCP	1			4	5		8		OK TO TOOL	OK TO TOOL		
VOID KEY	33482-0820																					
KEY D, GREEN	33482-0819			D						GCP	1			4	5			NOT RECOMMENDED	OK TO TOOL	OK TO TOOL		
KEY C, BROWN	33482-0818			C						GCP	1			4	5			NOT RECOMMENDED	OK TO TOOL	OK TO TOOL		
KEY B, LIGHT GRAY	33482-0817		B							GCP	1			4	5				OK TO TOOL	OK TO TOOL		
KEY A, BLACK	33482-0816		A							GCP	1			4	5				OK TO TOOL	OK TO TOOL		
VOID KEY	33482-0815																					
KEY D, GREEN	33482-0814			D						GCP				4	5			NOT RECOMMENDED	OK TO TOOL	OK TO TOOL		
KEY C, BROWN	33482-0813			C						GCP				4	5			NOT RECOMMENDED	OK TO TOOL	OK TO TOOL		
KEY B, LIGHT GRAY	33482-0812		B							GCP				4	5				OK TO TOOL	OK TO TOOL		
KEY A, BLACK	33482-0811		A							GCP				4	5				OK TO TOOL	OK TO TOOL		
VOID KEY	33482-0810																					
KEY D, GREEN	33482-0809			D						GCP				4				NOT RECOMMENDED	OK TO TOOL	OK TO TOOL		
KEY C, BROWN	33482-0808			C						GCP				4				NOT RECOMMENDED	OK TO TOOL	OK TO TOOL		
KEY B, LIGHT GRAY	33482-0807		B							GCP				4					OK TO TOOL	OK TO TOOL		
KEY A, BLACK	33482-0806		A							GCP				4					OK TO TOOL	OK TO TOOL		
VOID KEY	33482-0805																					
KEY D, GREEN	33482-0804			D					GCO									NOT RECOMMENDED	SEE P/N 33482-0853	OK TO TOOL	OK TO TOOL	
KEY C, BROWN	33482-0803			C					GCO									NOT RECOMMENDED	SEE P/N 33482-0852	OK TO TOOL	OK TO TOOL	
KEY B, LIGHT GRAY	33482-0802		B						GCO										OK TO TOOL	OK TO TOOL		
KEY A, BLACK	33482-0801		A						GCO										OK TO TOOL	OK TO TOOL		
ASSEMBLY DESCRIPTION	ASSEMBLY PART NUMBER	A	B	C	D	C	D	A	GCO	GCP	1	2	3	4	5	6	7	8	PRODUCTION TOOL STATUS	COMMENTS	34950-0810 BKS WITH RIBS	34950-0820 BKS WITHOUT RIBS
											BLOCKED TERMINAL											
											CAVITY WITH A NUMBER INDICATES BLOCKED TERMINAL POSITION											
											CAVITY WITHOUT A NUMBER INDICATES OPEN TERMINAL POSITION											
											OPTIONAL ATTACHMENTS SOLD SEPERATELY											

AE
AE

GROMMET SEAL	BURNT ORANGE	INHERENTLY LUBRICATED SILICONE
PLR	NATURAL	SPS/NYLON GF20
GROMMET CAP (PLUGGED)	BLACK	SPS/NYLON GF20
GROMMET CAP (OPEN)	BLACK	SPS/NYLON GF20
HOUSING KEYING OPTION A	YELLOW	SPS/NYLON GF20
HOUSING KEYING OPTION D	STONE GRAY	SPS/NYLON GF20
HOUSING KEYING OPTION C	DARK GRAY	SPS/NYLON GF20
HOUSING KEYING OPTION D	GREEN	SPS/NYLON GF20
HOUSING KEYING OPTION C	BROWN	SPS/NYLON GF20
HOUSING KEYING OPTION B	LIGHT GRAY	SPS/NYLON GF20
HOUSING KEYING OPTION A	BLACK	SPS/NYLON GF20
DESCRIPTION	COLOR	MATERIAL

BOM/APPLICABLE COMPONENTS TABLE

ABREVIATION	COMPONENT
A	HOUSING KEY A
B	HOUSING KEY B
C	HOUSING KEY C
D	HOUSING KEY D
GCO	GROMMET CAP, OPEN
GCP	GROMMET CAP, PLUGGED
PLR	PRIMARY LOCK REINFORCEMENT
BKS	BACKSHELL

REVISED IEC NO. UAU2013-1476 2013/03/17 DRAWN BY CHYK-APPROFIT 2013/03/20 APPR:VKOSHY 2013/03/26 REV AH	QUALITY SYMBOLS ∇=0 ∇=0 ∇=0	GENERAL TOLERANCES (UNLESS SPECIFIED) mm INCH 4 PLACES # --- # --- 3 PLACES # --- # --- 2 PLACES # 0.10 # --- 1 PLACE # 0.3 # --- 0 PLACE # # ---	DIMENSION STYLE MM ONLY DRAWN BY DATE DMARCOUX 06-17-02 CHECKED BY DATE DGRIFITHS 06-17-02 APPROVED BY DATE VKOSHY 2010/10/27	SCALE DESIGN UNITS METRIC THIRD ANGLE PROJECTION	TITLE MX150 2X4 BLADE SEALED ASSEMBLY MAT SEAL molex MATERIAL NO. SEE BOM DOCUMENT NO. SD-33482-081	SHEET NO. 8 OF 9
	DRAFT WHERE APPLICABLE MUST REMAIN WITHIN DIMENSIONS					
	THIS DRAWING CONTAINS INFORMATION THAT IS PROPRIETARY TO MOLEX INCORPORATED AND SHOULD NOT BE USED WITHOUT WRITTEN PERMISSION					
	SIZE D					

