

IEC Appliance Inlet C20 with Filter, ECO design, front or rear side Mounting



Screw-on or rivet mounting from front or rear side
Screw-on mounting



Screw-on mounting from rear side, integrated thread
Screw-on mounting



Snap-in mounting from front side
Snap-in version



See below:
[Approvals and Compliances](#)

Description

- Panel mount :
Screw-on version from front or rear side, snap-in version from front side
- 2 Functions :
Appliance Inlet Protection class I , Line filter in standard and medical version
- Quick connect terminals

Unique Selling Proposition

- ECO design
- Metal flange for optimal shielding
- Compact design
- V-Lock cord retaining

Characteristics

- Optimal shielding due to completely closed filter case, unpotted
Suitable for assembly in metal plated plastic housings
- Version with class X1 and X2 (standard version) capacitors
- Universal line filter for standard applications
- Suitable for use in equipment according to IEC/UL 60950
Suitable for use in medical equipment according to IEC/UL 60601-1

Other versions on request

- Solder terminals
- Medical version M80
- Capacity CX 330 nF

References

Fits to type: [4790](#); [4795 0104](#); [0104U](#); [1651](#); [1652](#); [1654](#); [4790](#); [4795](#); [VAC19KS](#)
 Alternative: version without line filter [4793](#); [4798](#)

Weblinks

[pdf datasheet](#), [html-datasheet](#), [General Product Information](#), [Distributor-Stock-Check](#), [Accessories](#), [Detailed request for product](#), [Microsite](#)

Newly available variants corresponding to V-Lock mating cordset. The connector is equipped with a notch intended for use with the latching cordset. The cord latching system prevents against accidental removal of the cordset.

Technical Data

| | | | |
|---------------------------------|---|-------------------------|--|
| Ratings IEC | 16A @ Ta 40 °C / 250VAC; 50Hz | appliance inlet/-outlet | C20 acc. to IEC 60320-1, UL 498, CSA C22.2 no. 42 (for cold conditions) pin-temperature 70 °C, 16A, Protection Class I |
| Ratings UL/CSA | 20A @ Ta 40 °C / 250VAC; 60Hz | Line Filter | Standard and Medical Version, IEC 60939, UL 1283, CSA C22.2 no. 8 Technical Details |
| Leakage Current | standard < 0.5mA (250V / 60Hz) medical < 5 µA (250 V / 60 Hz) | MTBF | > 3'000'000h acc. to MIL-HB-217 F |
| Dielectric Strength | > 1.7kVDC between L-N > 2.7kVDC between L/N-PE Test voltage (2 sec) | | |
| Impulse Withstand Voltage | > 2.5kV between L-N (CX2) > 4 kV between L-N (CX1) > 5 kV between L/N-PE (Cy2) voltage (1.2/50 µs) | | |
| Allowable Operation Temperature | -25 °C to 85 °C | | |
| Climatic Category | 25/085/21 acc. to IEC 60068-1 | | |
| IP-Protection | from front side IP 40 acc. to IEC 60529 | | |
| Protection Class | Suitable for appliances with protection class I acc. to IEC 61140 | | |
| Terminal | Quick connect terminal 6.3 x 0.8 mm | | |
| Panel Thickness S | Screw: max 8 mm Mounting screw torque max 0.5Nm Snap-in: 0.8 mm to 3 mm (all steps with one variant) | | |
| Material: Housing | Themoplast / steel tin-plated, black / metallic, UL 94V-0 | | |



Approvals and Compliances

Detailed information on product approvals, code requirements, usage instructions and detailed test conditions can be looked up in [Details about Approvals](#)

Approvals









The approval mark is used by the testing authorities to certify compliance with the safety requirements placed on electronic products.

Approval Reference Type: 5130

| Approval Logo | Certificates | Certification Body | Description |
|--|---------------|--------------------|----------------------------|
|  | VDE Approvals | VDE | Certificate Number: 104884 |
|  | UL Approvals | UL | UL File Number: E72928 |



Product standards

Product standards that are referenced

| Organization | Design | Standard | Description |
|--|-----------------------|------------------|---|
|  | Designed according to | IEC 60320-1 | Appliance couplers for household and similar general purposes |
|  | Designed according to | IEC 60939 | Passive filters for suppressing electromagnetic interference |
|  | Designed according to | IEC 60127-6 | Miniature fuses. Part 6. Fuse-holders for miniature fuse-links |
|  | Designed according to | IEC 61058-1 | Switches for appliances. Part 1. General requirements |
|  | Designed according to | UL 498 | Standard for Attachment Plugs and Receptacles |
|  | Designed according to | UL 1283 | Electromagnetic interference filters |
|  | Designed according to | CSA C22.2 no. 42 | General Use Receptacles, Attachment Plugs, and Similar Wiring Devices |
|  | Designed according to | CSA C22.2 no. 8 | Electromagnetic interference (EMI) filters |







Application standards

Application standards where the product can be used

| Organization | Design | Standard | Description |
|--|--------------------------------|--------------|--|
|  | Designed for applications acc. | IEC/UL 60950 | IEC 60950-1 includes the basic requirements for the safety of information technology equipment. |
|  | Designed for applications acc. | IEC 60601-1 | Medical electrical equipment - Part 1: General requirements for basic safety and essential performance |

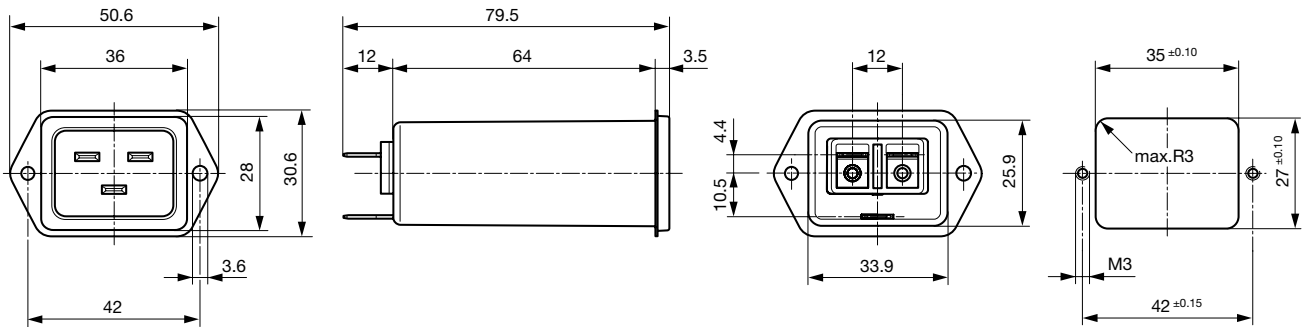
Compliances

The product complies with following Guide Lines

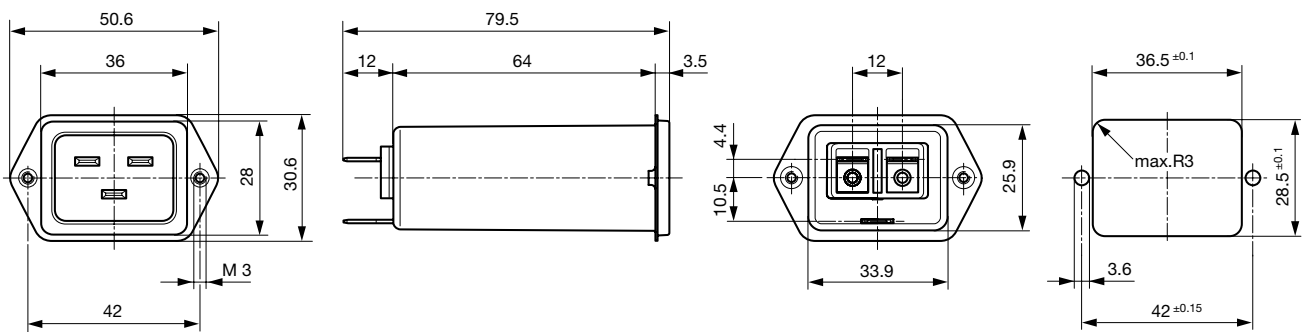
| Identification | Details | Initiator | Description |
|--|------------------------------|-------------|--|
|  | CE declaration of conformity | SCHURTER AG | The CE marking declares that the product complies with the applicable requirements laid down in the harmonisation of Community legislation on its affixing in accordance with EU Regulation 765/2008. |
|  | RoHS | SCHURTER AG | EU Directive RoHS 2011/65/EU |
|  | China RoHS | SCHURTER AG | The law SJ / T 11363-2006 (China RoHS) has been in force since 1 March 2007. It is similar to the EU directive RoHS. |
|  | REACH | SCHURTER AG | On 1 June 2007, Regulation (EC) No 1907/2006 on the Registration, Evaluation, Authorization and Restriction of Chemicals 1 (abbreviated as "REACH") entered into force. |
|  | MicrositeV-Lock | SCHURTER AG | V-Lock system are based on a matching plug-dose combination. The connector is equipped with a notch intended for use with the latching cordset. The cord latching system prevents against accidental removal of the cordset. |
|  | Medical Equipment | SCHURTER AG | Suitable for use in medical equipment according to IEC/UL 60601-1 |

Dimensions [mm]

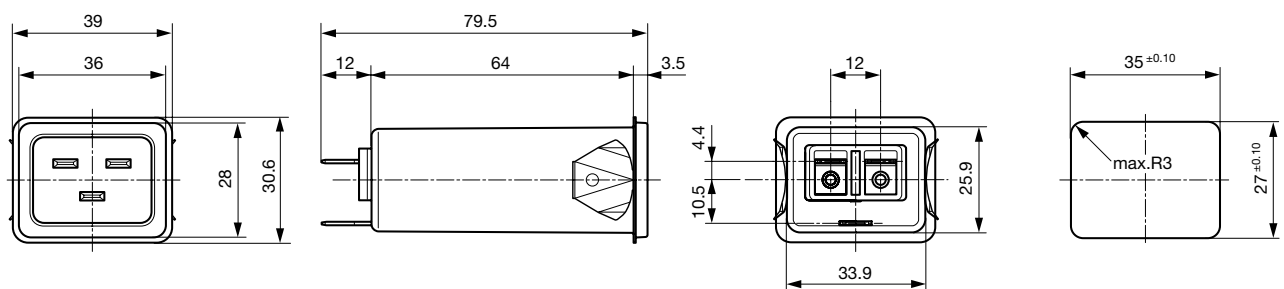
Front or rear side mounting for screws with nuts or blind rivets



Rear side mounting with pre-formed, threaded holes for M3 screws



Snap-in mounting from front side

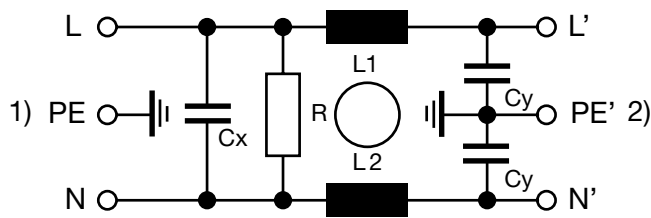


Technical Data of Filter-Components

| Rated Current [A] | Filter-Type | Inductances L [mH] | Capacitance CX [nF] | Capacitance CY [nF] | R [MΩ] |
|-------------------|----------------------|--------------------|---------------------|---------------------|--------|
| 16 | Standard Version | 2 x 0.6 | 100 | 2.2 | 1 |
| 16 | Standard Version | 2 x 0.6 | 330 | 2.2 | 1 |
| 20 | Standard Version | 2 x 0.3 | 100 | 2.2 | 1 |
| 20 | Standard Version | 2 x 0.3 | 330 | 2.2 | 1 |
| 16 | Medical Version (M5) | 2 x 0.6 | 100 | - | 1 |
| 20 | Medical Version (M5) | 2 x 0.3 | 100 | - | 1 |

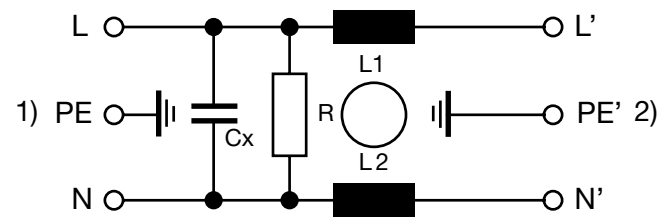
Diagrams

Standard or medical version (M80)



1) Line
2) Load

Medical version (M5)



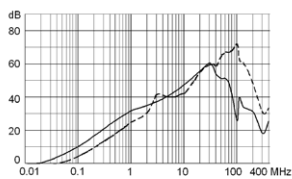
1) Line
2) Load

Attenuation Loss

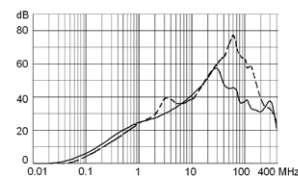
--- 50Ω differential mode ____ 50Ω common mode

Standard version

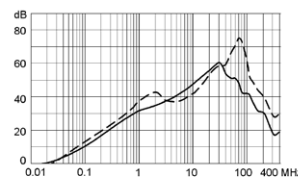
16 A



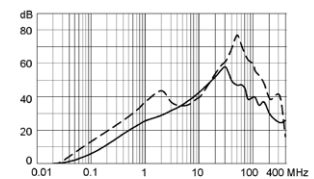
20 A



16 A Cx 330 nF

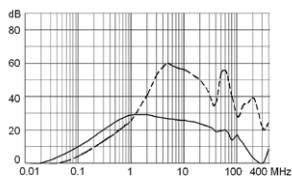


20 A Cx 330 nF

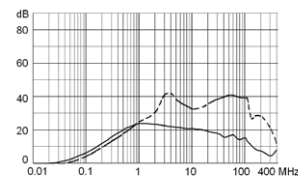


Medical version (M5)

16 A



20 A



All Variants

| Rated Current IEC | Rated Current UL | Filter-Type | Panel mounting | Mounting side | Terminal | Capacitor | V-Lock | Order Number |
|-------------------|------------------|------------------|----------------|---------------|--------------------------------------|-----------|--------|--------------|
| 16 | 16 | Standard Version | Snap-in | Front Side | Quick connect terminals 6.3 x 0.8 mm | X2 100nF | | 5130.2000 |
| 16 | 20 | Standard Version | Snap-in | Front Side | Quick connect terminals 6.3 x 0.8 mm | X2 100nF | | 5130.2001 |
| 16 | 16 | Standard Version | Snap-in | Front Side | Quick connect terminals 6.3 x 0.8 mm | X1 100nF | | 5130.2100 |
| 16 | 20 | Standard Version | Snap-in | Front Side | Quick connect terminals 6.3 x 0.8 mm | X1 100nF | | 5130.2101 |
| 16 | 16 | Standard Version | Screw-on/Rivet | Front Side | Quick connect terminals 6.3 x 0.8 mm | X2 330nF | | 5130.0600 |

| Rated Current IEC | Rated Current UL | Filter-Type | Panel mounting | Mounting side | Terminal | Capacitor | V-Lock | Order Number |
|-------------------|------------------|----------------------|----------------|---------------|--------------------------------------|-----------|--------|--------------|
| 16 | 20 | Standard Version | Screw-on/Rivet | Front Side | Quick connect terminals 6.3 x 0.8 mm | X2 330nF | | 5130.0601 |
| 16 | 16 | Standard Version | Screw-on/Rivet | Front Side | Quick connect terminals 6.3 x 0.8 mm | X2 100nF | | 5130.0000 |
| 16 | 16 | Standard Version | Screw-on/Rivet | Front Side | Quick connect terminals 6.3 x 0.8 mm | X2 100nF | ● | 5130.0000.21 |
| 16 | 20 | Standard Version | Screw-on/Rivet | Front Side | Quick connect terminals 6.3 x 0.8 mm | X2 100nF | | 5130.0001 |
| 16 | 16 | Standard Version | Screw-on/Rivet | Front Side | Quick connect terminals 6.3 x 0.8 mm | X1 100nF | | 5130.0100 |
| 16 | 20 | Standard Version | Screw-on/Rivet | Front Side | Quick connect terminals 6.3 x 0.8 mm | X1 100nF | | 5130.0101 |
| 16 | 16 | Standard Version | Screw | Rear Side | Quick connect terminals 6.3 x 0.8 mm | X2 100nF | | 5130.1000 |
| 16 | 20 | Standard Version | Screw | Rear Side | Quick connect terminals 6.3 x 0.8 mm | X2 100nF | | 5130.1001 |
| 16 | 16 | Standard Version | Screw | Rear Side | Quick connect terminals 6.3 x 0.8 mm | X1 100nF | | 5130.1100 |
| 16 | 20 | Standard Version | Screw | Rear Side | Quick connect terminals 6.3 x 0.8 mm | X1 100nF | | 5130.1101 |
| 16 | 20 | Medical Version (M5) | Snap-in | Front Side | Quick connect terminals | X1 100nF | | 5130.2301 |
| 16 | 16 | Medical Version (M5) | Snap-in | Front Side | Quick connect terminals 6.3 x 0.8 mm | X2 100nF | | 5130.2200 |
| 16 | 20 | Medical Version (M5) | Snap-in | Front Side | Quick connect terminals 6.3 x 0.8 mm | X2 100nF | | 5130.2201 |
| 16 | 16 | Medical Version (M5) | Snap-in | Front Side | Quick connect terminals 6.3 x 0.8 mm | X1 100nF | | 5130.2300 |
| 16 | 16 | Medical Version (M5) | Screw-on/Rivet | Front Side | Quick connect terminals 6.3 x 0.8 mm | X2 100nF | | 5130.0200 |
| 16 | 20 | Medical Version (M5) | Screw-on/Rivet | Front Side | Quick connect terminals 6.3 x 0.8 mm | X2 100nF | | 5130.0201 |
| 16 | 16 | Medical Version (M5) | Screw-on/Rivet | Front Side | Quick connect terminals 6.3 x 0.8 mm | X1 100nF | | 5130.0300 |
| 16 | 16 | Medical Version (M5) | Screw-on/Rivet | Front Side | Quick connect terminals 6.3 x 0.8 mm | X1 100nF | ● | 5130.0300.21 |
| 16 | 20 | Medical Version (M5) | Screw-on/Rivet | Front Side | Quick connect terminals 6.3 x 0.8 mm | X1 100nF | | 5130.0301 |
| 16 | 16 | Medical Version (M5) | Screw | Rear Side | Quick connect terminals 6.3 x 0.8 mm | X2 100nF | | 5130.1200 |
| 16 | 20 | Medical Version (M5) | Screw | Rear Side | Quick connect terminals 6.3 x 0.8 mm | X2 100nF | | 5130.1201 |
| 16 | 16 | Medical Version (M5) | Screw | Rear Side | Quick connect terminals 6.3 x 0.8 mm | X1 100nF | | 5130.1300 |
| 16 | 20 | Medical Version (M5) | Screw | Rear Side | Quick connect terminals 6.3 x 0.8 mm | X1 100nF | | 5130.1301 |

Most Popular.

Availability for all products can be searched real-time: <https://www.schurter.com/en/Stock-Check/Stock-Check-SCHURTER>

Type for screw on mounting from rear side has pre-threaded holes for M3 screws

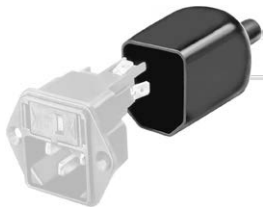
Packaging unit 20 Pcs

Accessories

Description



Wire Harness
 Wire harness for SCHURTER products



Assorted Covers
 Rear Cover

0859.0047



Cord retaining kits
 Cord retaining strain relief

Flat head, L

4700.0011

Mating Inlets/Plugs

Category / Description



Connector Overview complete

IEC Connector C19, Rewireable, Straight

4795

IEC Connector C19, Rewireable, Angled

4790

Connector further types to 5130

Mating Outlets/Connectors



Connector Overview complete

IEC Connector C19, Rewireable, Straight

4795

IEC Connector C19, Rewireable, Angled

4790

Connector further types to 5130

Mating Outlets/Connectors shuttered



Power Cord Overview complete

Overview Power Cord with IEC Appliance Connector C19, V-Lock, straight

VAC19KS

Power Cord further types to 5130