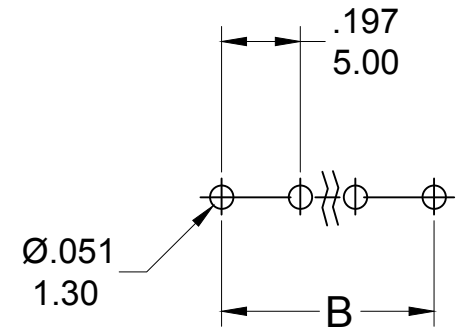
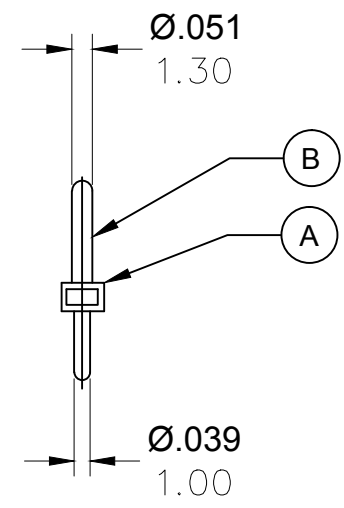
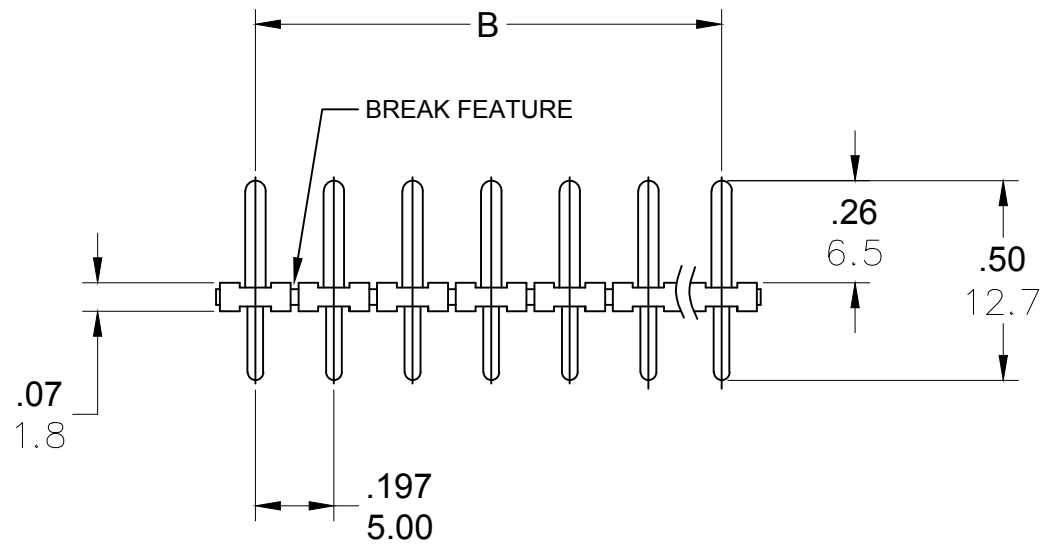
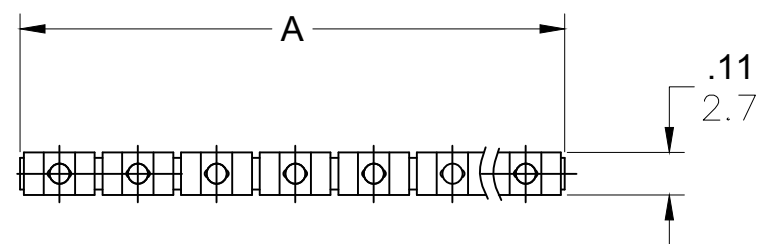
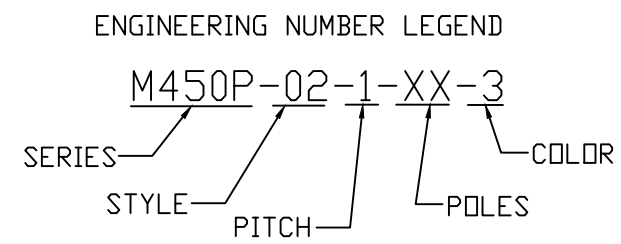


PART NUMBER DATA							
CIRCUITS	PART NUMBER	ENGINEERING NUMBER	COLOR	A IN mm		B IN mm	
2	397610002	M450P-02-1-02-3	GREEN	.39	10.0	.197	5.00
3	397610003	M450P-02-1-03-3	GREEN	.59	15.0	.394	10.00
4	397610004	M450P-02-1-04-3	GREEN	.79	20.0	.591	15.00
5	397610005	M450P-02-1-05-3	GREEN	.98	25.0	.787	20.00
6	397610006	M450P-02-1-06-3	GREEN	1.18	30.0	.984	25.00
7	397610007	M450P-02-1-07-3	GREEN	1.38	35.0	1.181	30.00
8	397610008	M450P-02-1-08-3	GREEN	1.57	40.0	1.378	35.00
9	397610009	M450P-02-1-09-3	GREEN	1.77	45.0	1.575	40.00
10	397610010	M450P-02-1-10-3	GREEN	1.97	50.0	1.772	45.00
11	397610011	M450P-02-1-11-3	GREEN	2.17	55.0	1.969	50.00
12	397610012	M450P-02-1-12-3	GREEN	2.36	60.0	2.165	55.00
13		M450P-02-1-13-3	GREEN	2.56	65.0	2.362	60.00
14		M450P-02-1-14-3	GREEN	2.76	70.0	2.559	65.00
15		M450P-02-1-15-3	GREEN	2.95	75.0	2.756	70.00
16		M450P-02-1-16-3	GREEN	3.15	80.0	2.953	75.00
17		M450P-02-1-17-3	GREEN	3.35	85.0	3.150	80.00
18		M450P-02-1-18-3	GREEN	3.54	90.0	3.346	85.00
19		M450P-02-1-19-3	GREEN	3.74	95.0	3.543	90.00
20		M450P-02-1-20-3	GREEN	3.94	100.0	3.740	95.00
21		M450P-02-1-21-3	GREEN	4.13	105.0	3.937	100.00
22		M450P-02-1-22-3	GREEN	4.33	110.0	4.134	105.00
23		M450P-02-1-23-3	GREEN	4.53	115.0	4.331	110.00
24		M450P-02-1-24-3	GREEN	4.72	120.0	4.528	115.00
25		M450P-02-1-25-3	GREEN	4.92	125.0	4.724	120.00
26		M450P-02-1-26-3	GREEN	5.12	130.0	4.921	125.00
27		M450P-02-1-27-3	GREEN	5.31	135.0	5.118	130.00
28		M450P-02-1-28-3	GREEN	5.51	140.0	5.315	135.00
29		M450P-02-1-29-3	GREEN	5.71	145.0	5.512	140.00
30		M450P-02-1-30-3	GREEN	5.91	150.0	5.709	145.00

REF. THE LAST 2 DIGITS OF THE PART NUMBER EQUAL CIRCUIT COUNT



PCB LAYOUT



CONTACT FACTORY FOR OPTIONAL COLORS

TOLERANCES			
MM	TOL	INCH	TOL
0-6	±0.25	0-.24	±.010
>6-30	±0.40	.24-1.18	±.016
>30-120	±0.50	1.18-4.76	±.020
>120	±0.80	>4.76	±.031

SPECIFICATIONS

- MATERIAL:
 - BODY: PA66, UL94V-0
 - TERMINAL: BRASS. TIN PLATED
- RATING: 300V, 10A
- OPERATING TEMPERATURE: -40°C TO +105° C
- MAX SOLDERING: 260° C (+500° F) FOR 5 SECONDS
- DIMS SHOWN ARE FOR REFERENCE ONLY

REVISED DOC TOL EC NO: IPG2017-0881 DRWN: ABENJAMI CHKD: --- APPR: BRUPERT 2014/10/16 4/6/17 1 DESCRIPTION REV	QUALITY SYMBOLS	GENERAL TOLERANCES (UNLESS SPECIFIED)	DIMENSION STYLE	SCALE	DESIGN UNITS	THIRD ANGLE PROJECTION	
	▽=0 ◇=0	mm INCH	IN/MM	---	METRIC		
			4 PLACES ±--- ±--- 3 PLACES ±--- ±--- 2 PLACES ±--- ±--- 1 PLACE ±--- ±---	DRAWN BY DATE RSTONE 2014/07/28	TITLE PIN HEADER BREAKABLE 5.00MM, VERTICAL 1.30MM PIN DIA		
			ANGULAR ±---°	CHECKED BY DATE G FARNSW ---	MOLEX INCORPORATED		
		DRAFT WHERE APPLICABLE MUST REMAIN WITHIN DIMENSIONS	APPROVED BY DATE JFMURPHY 2014/10/16	DOCUMENT NO. SD-39761-001		SHEET NO. 1 OF 1	
			MATERIAL NO. SEE CHART	THIS DRAWING CONTAINS INFORMATION THAT IS PROPRIETARY TO MOLEX INCORPORATED AND SHOULD NOT BE USED WITHOUT WRITTEN PERMISSION			