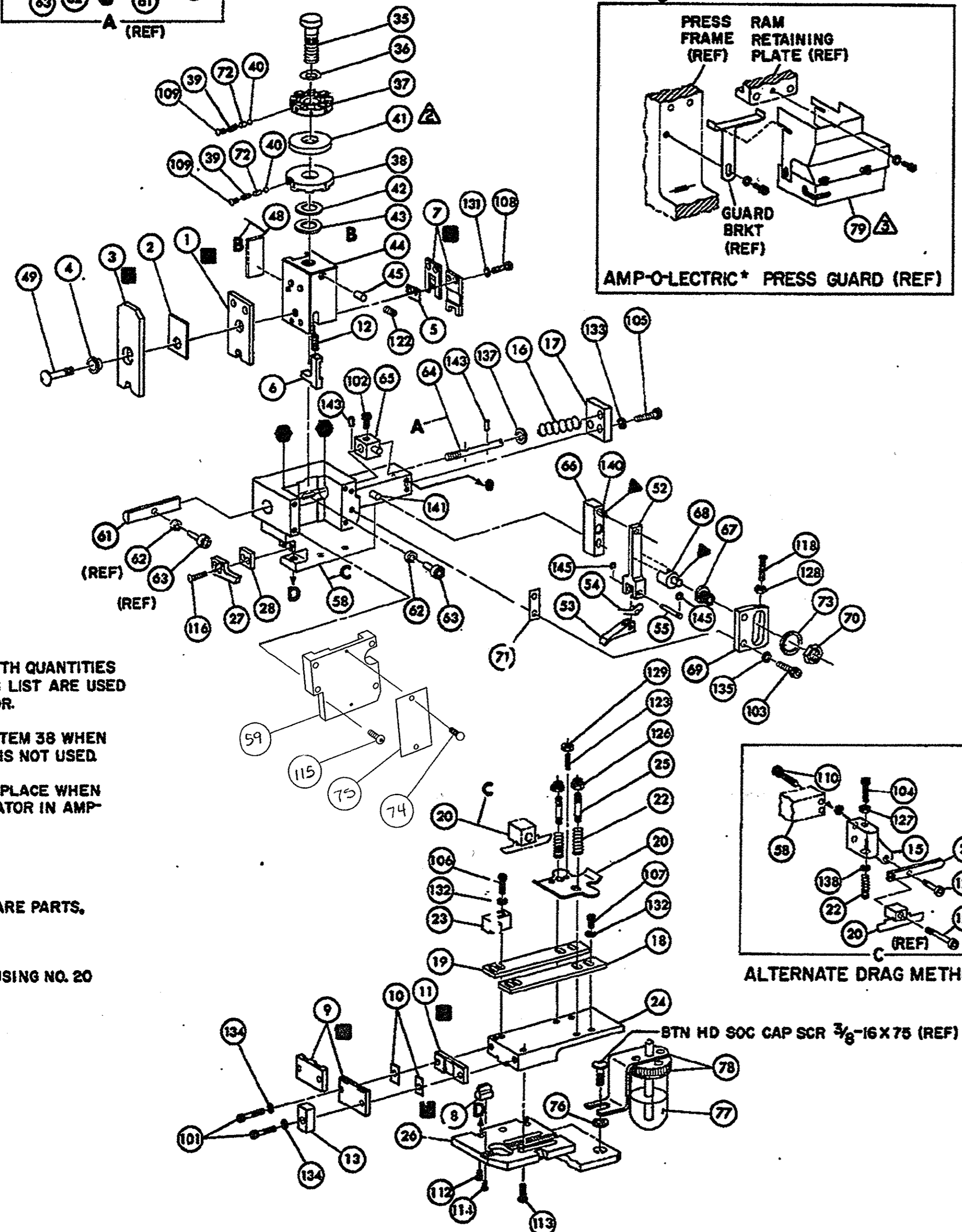
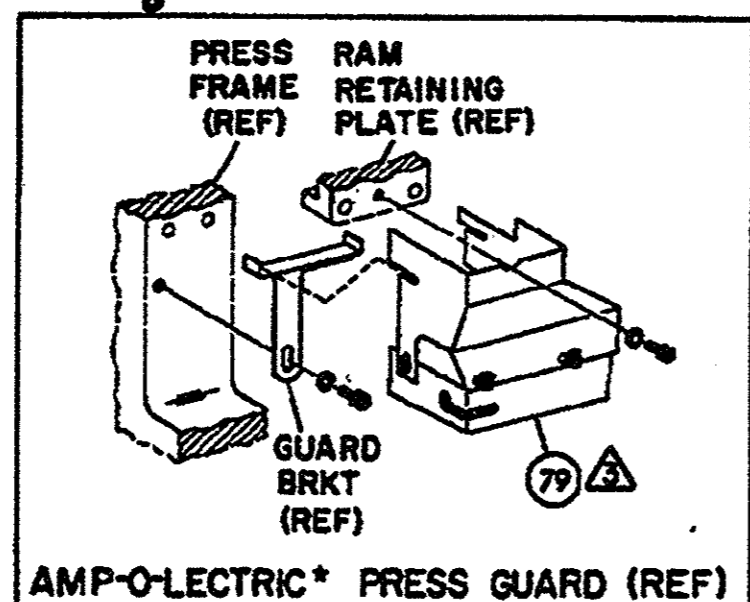
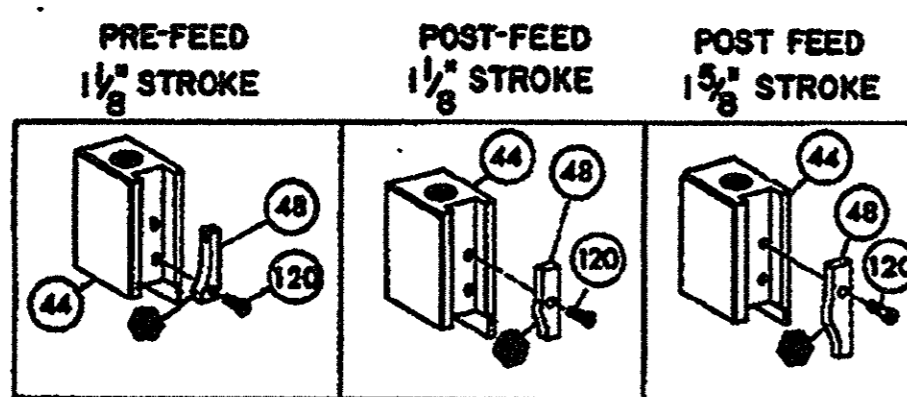
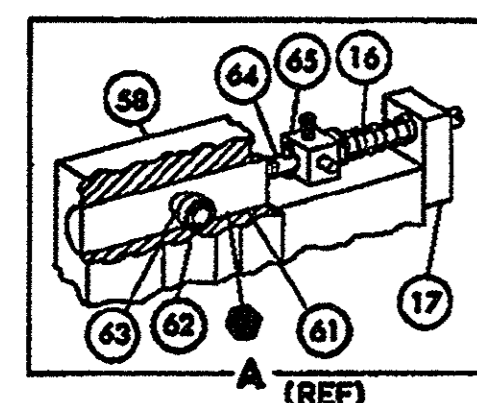


THIS IS A CONTROLLED DOCUMENT



- NOTES**
- 1 ONLY THE ITEMS WITH QUANTITIES SPECIFIED ON PARTS LIST ARE USED ON THIS APPLICATOR.
 - ▲ USED IN PLACE OF ITEM 38 WHEN INSULATION CRIMP IS NOT USED.
 - ▲ GUARD MUST BE IN PLACE WHEN OPERATING APPLICATOR IN AMP-O-LECTRIC PRESS.
- KEY:**
- RECOMMENDED SPARE PARTS.
 - ▲ LUBRICATE DAILY USING NO. 20 MACHINE OIL.
 - GREASE LIGHTLY.

QTY	PART NO	DESCRIPTION	REV	QTY	PART NO	DESCRIPTION	REV
2	21045-3	RING, RETAINING 'C' (.187 DIA) FEED PIN	148	1	454220-1	CAP, RAM	59
2	3-21028-1	PIN, SLOT SPG (.12 DIA X .50) FE ADJ ROD	143	1	453736-1	HOUSING	58
1	1-21030-7	PIN, DOWEL (.187 DIA X 1.50) HOUSING	141	1	240624-1	PIN, FEED FINGER	55
1	1-21030-1	PIN, DOWEL (.187 DIA X .50) LEVER	140	1	691499-1	SPRING, FEED FINGER	54
—	22260-5	WASHER, FLAT (NO 6) DRAG SPRING	139	1	240635-5	FINGER, FEED	53
1	21899-4	WASHER, FLAT (5/16 DIA) SCR ADJ	137	1	240634-3	LEVER, TERMINAL	52
2	21024-5	WASHER, LOCK (NO 10) FEED ADJ PLATE	135	1	690686-1	BOLT, CRIMPER	49
2	21024-5	WASHER, LOCK (NO 10) SHEAR PLATES	134	1	690501-4	CAM, POST FEED 1 5/8\"/>	

QTY	PART NO	DESCRIPTION	REV
1	2-21003-0	SCR, FLAT HD SKT CAP (6-32 X .50) CAM	120
1	3-21064-2	SCR, RD HD MACH (6-32 X 1.50) FEED ADJ	117
2	2-21002-2	SCR, BTN HD SKT CAP (8-32 X .50) STRIPPER	116
4	2-21002-9	SCR, BTN HD SKT CAP (10-32 X .75) HSG CAP	115
1	24073-2	SCR, BTN HD SKT CAP (8-32 X .38) (LOC-WEL) ANVIL	114
4	3-21002-3	SCR, BTN HD SKT CAP (1/4-20 X .50) STR GDE PL	113
3	1-24073-9	SCR, BTN HD SKT CAP (1/4-20 X .75) BASE PL	112
—	2-21000-4	SCR, SKT HD CAP (6-32 X 1.00) DRAG ADAPTOR	110
2	3-23857-8	SCR, SKT HD CAP (6-32 X .25) (LOC-WEL) CP DISC	109
2	2-21000-5	SCR, SKT HD CAP (8-32 X .62) SHEAR BLADE	108
3	2-21000-6	SCR, SKT HD CAP (8-32 X .38) STRIP GUIDE	107
1	2-21000-6	SCR, SKT HD CAP (8-32 X .38) STRIP GUIDE	106
2	3-21000-7	SCR, SKT HD CAP (10-32 X .75) FD ROD GUIDE	105
1	3-21000-9	SCR, SKT HD CAP (10-32 X 1.00) DRAG SPRING	104
2	3-21000-6	SCR, SKT HD CAP (10-32 X .62) FD ADJ PLATE	103
1	3-21000-4	SCR, SKT HD CAP (10-32 X .38) PIVOT BLK	102
2	3-21000-8	SCR, SKT HD CAP (10-32 X .88) SHEAR PLATE	101
REF	455750-3	GUARD ASSY	79
—	465184-9	LUBRICATO, ASSY	78
—	455985-1	OIL, LUBRICATING	77
—	454406-1	SPACER, LUB BRACKET	76
1	461264-1	PLATE, ID	75
2	21017-2	SCR, DRIVE (.42 X .19) ID PLATE	74
1	458109-1	WASHER, FLAT (SPECIAL)	73
2	690503-1	SPRING, ASSIST	72
1	690517-1	SPACER	71
1	22594-8	NUT, HEX	70
1	240628-1	PLATE, ADJ	69
1	240626-1	SHAFT, PIVOT	68
1	240633-1	BUSHING	67
1	455680-1	LEVER, INTERMEDIATE	66
1	240629-1	BLOCK, PIVOT	65
1	240632-2	SCREW, ADJ	64
1	240659-3	PIN, CAM ROLLER	63
1	240658-1	CAM, ROLLER	62
1	454398-1	ROD, FEED	61

REMARKS				CRIMPING DATA				APPLICATOR WILL APPLY				
APPL USED ON MACHINE PART NO				CRIMP	SIZE	TYPE	FEED	APPL INST	160134			
CUSTOMER NAME				WIRE	180	F	1.096	A1 8039	160163			
ADDRESS				INSUL	250	F	1.096	A1 8039	160334			
CITY				WIRE RANGE	12-10							
ENG APP				INSULATION RANGE	150-240							
FIELD ENG COPY				REMARKS	LEADMAKER & BENCH G							