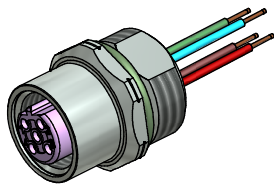


Contact assignment:

- 1) brown
- 2) Profibus-A green
- 3) blue
- 4) Profibus-B red



Technical specification:

Rated voltage: 250 V
IEC 61076-2-101

Current rating: 4 A at 40°C
IEC 61076-2-101

Insulation resistance: >=100 MΩ
IEC 60512

Pollution degree: 3/2
IEC 60664-1

Degree of protection: IP 67, in mated condition
IEC 60529

Temperature range: -30°C ... +80°C

Mating cycles: >=100
IEC 60512-9a

Materials:

Contact: CuZn

Contact plating: Nickel, gold plated

Contact carrier: PBT GF, UL 94

Sealing: FPM

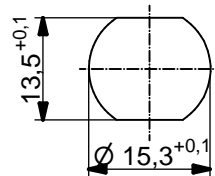
Socket housing: CuZn, nickel plated

Grouting: Polyurethane-resin, UL 94

Installation specification:

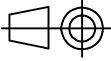

recommended torque: 1-1,2 Nm

Conec installation tool: Torque wrench: 36-000200
Insert across flats 17: 36-000230



Minimum wall thickness 1,5mm,
alternativ panel cut-out d=15,3

Part no:	Description:	Pos	Length L:	Wire:
43-01109	SAL - 12B - FK4.3 - 0,5 - 9	4	0,5m	AWG 22 PVC, UL
43-xxxxx	SAL - 12B - FK4.3 - ... - 9	4	x	

DO NOT ALTER CAD DRAWING BY HAND Directive 2002/95/EC RoHS compliant	Index: c 12.02.13 MG Ä4631 Data sheet revised, technical specification changed, materials corrected	 dim. in mm		title: Female socket M12x1 with wire, frontmounting, Profibus DP, PG9
		date	name	
	tolerance of wire: L <= 0,5m: L + 20mm L > 0,5m: L + 4%	drawn 20.02.07	Fromm	
	general tolerance: 0 ± 0,50mm 0,0 ± 0,25mm 0,00 ± 0,10mm	appd. 06.03.07	Mankopf	
		43K1A353		
		part no: see table		

THIS DRAWING MAY NOT BE COPIED OR REPRODUCED IN ANY WAY, AND MAY NOT BE PASSED ON TO A THIRD PARTY WITHOUT WRITTEN PERMISSION. OWNERSHIP AND COPYRIGHT OF CONEC GmbH