

Evaluating the AD9552 Oscillator Frequency Upconverter

FEATURES

- Simple power connection using USB connection and on-board LDO voltage regulators**
- LDOs are easily bypassed for power measurements**
- AC-coupled differential LVPECL SMA connectors**
- SMA connectors for**
 - 1 reference input
 - 1 PLL lock detect output
- Microsoft Windows®-based evaluation software with simple graphical user interface**
- On-board PLL loop filter**
- Easy access to digital I/O and diagnostic signals via I/O header**
- Status LEDs for diagnostic signals**
- USB computer interface**
- Dip switch configurable for manual operation**
- Software calculator provides flexibility, allowing programming almost any rational input/output frequency ratio**

GENERAL DESCRIPTION

This user guide describes the hardware and software of the AD9552 evaluation board and includes detailed schematics and PCB layout artwork. The AD9552 evaluation board is a compact, easy to use platform for evaluating all features of the AD9552 oscillator frequency upconverter.

The AD9552 is a fractional-N phase-locked loop (PLL) based clock generator designed specifically to replace high frequency crystal oscillators and resonators. The device employs a sigma-delta (Σ - Δ) modulator (SDM) to accommodate fractional frequency synthesis. The user supplies an input reference signal by connecting a single-ended clock signal directly to the REF pin or by connecting a crystal resonator across the XTAL pins.

The AD9552 is pin programmable, providing one of 64 standard output frequencies based on one of eight standard input frequencies. The device also has a 3-wire SPI interface, enabling the user to program custom input-to-output frequency ratios.

The AD9552 relies on an external capacitor to complete the loop filter of the PLL. The output is compatible with LVPECL, LVDS, or single-ended CMOS logic levels, although the AD9552 is implemented in a strictly CMOS process.

DIGITAL PICTURE OF THE EVALUATION BOARD

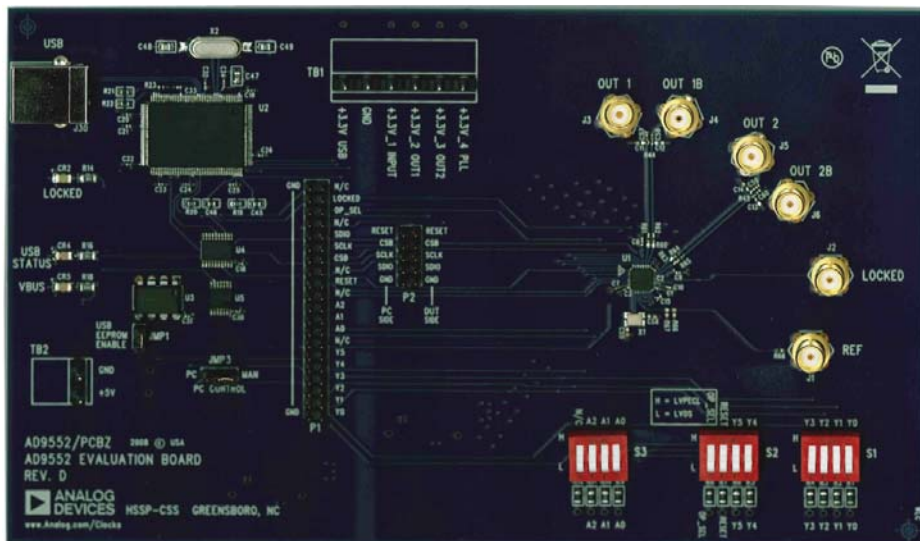


Figure 1. AD9552 Evaluation Board

TABLE OF CONTENTS

Features	1	Using an SPI Port	5
General Description	1	Using Dip Switches (Manual Control)	5
Digital Picture of the Evaluation Board.....	1	Using Software to Override Dip Switches (Software Control).....	5
Revision History	2	Software Operation	6
Evaluation Board Hardware.....	3	Menu Bar of Main Window	7
Setting Up the Power and PC Connections	3	Button Bar of Main Window	8
Setting Up the Signal Connections	3	Using Software to Control the Functional Blocks of the	
Bypassing the USB Power Supply.....	3	AD9552.....	8
Evaluation Board Software	4	Using Software to Calculate the Device Settings	10
Installing the Software	4	Routing 26 MHz to Test Port.....	10
Using the Software.....	4	ESD Caution.....	12
Guide to Programming the AD9552.....	5		

REVISION HISTORY

1/10—Revision 0: Initial Version

EVALUATION BOARD HARDWARE

The following instructions are for setting up the physical connections to the AD9552 evaluation board.

SETTING UP THE POWER AND PC CONNECTIONS

Set up the power and PC connections as follows:

1. Install the AD9552 evaluation software before connecting the evaluation board to your PC for the first time (see the Installing the Software section). Administrative privileges are required for installation.

The AD9552 has the option of either being pin or register programmable. If the pin-programmable option is desired, then no software is needed to control the part. However, it is recommended to install the software because if it is not installed, the computer recognizes the evaluation board as new hardware and attempts to install drivers.

2. Connect the USB cables to the evaluation board and the computer.

The red LED labeled VBUS (CR5) on the AD9552 evaluation board should illuminate, and the USB STATUS LED should start blinking. If the USB STATUS LED is not blinking, ensure that the USB port on the PC is operational and that the USB cable is not damaged.

3. If the **Found New Hardware Wizard** automatically appears when the evaluation board is connected, select **Install the software automatically** and then click **Next**.

The **Found New Hardware Wizard** may appear twice, and a system restart may be required.

Refer to the Evaluation Board Software section for details on running the AD9552 evaluation board software.

SETTING UP THE SIGNAL CONNECTIONS

After setting up the power and PC connections, use the following procedure to set up the signal connections:

1. Connect an oscilloscope, spectrum analyzer, or other lab equipment to any of the J3 to J6 SMA connectors on the upper right side of the board. The output connectors are single ended. A 50 Ω termination should be placed on all enabled unused outputs.

BYPASSING THE USB POWER SUPPLY

The evaluation board can be configured to supply power to the AD9552 from an external power supply. Bypass the USB power supply as follows:

1. Remove the F2 ferrite bead (located on the backside of the board).
2. Connect a bench power supply to Pin 3.3V_1 INPUT of TB1 on the evaluation board. In addition, resistors on the evaluation board can be removed to further separate power supply connections to the AD9552. This is useful for measuring the AD9552 power consumption. Refer to the evaluation board schematics provided on the CD in the evaluation board kit (also available at www.analog.com) for further details.

EVALUATION BOARD SOFTWARE

The instructions included in this section are for setting up the AD9552 evaluation board software.

INSTALLING THE SOFTWARE

Do not connect the evaluation board until the software installation is complete. To install the software,

1. Insert the AD9552 evaluation software CD-ROM into a PC CD disc drive.
2. Click **My Computer**, and then double-click the **AD9552EV CD** icon.

A window opens showing the contents of the CD divided into four sections: data sheet, layout, schematic, and software. The **readme.txt** file contains a description of the CD-ROM contents, as well as any last minute instructions or information.

3. Double-click the **Software** folder, and then double-click **AD9552Eval_Setup1.1.0.exe**. Follow the installation instructions. The default location for the evaluation software is **C:\Program Files\Analog Devices\AD9552 Eval Software**.
4. If there are any updates to the evaluation software on a supplemental CD or in the **\Software\Updates** folder, be sure to copy the new .exe file, as well as any setup files, to the default location.

USING THE SOFTWARE

After the evaluation software has been installed, you can run the software as follows:

1. Power up and connect the evaluation board to the PC.
2. Double-click **AD9552 Eval Software** to run the AD9552 evaluation software.

A hardware installation window appears. Depending on whether the evaluation board is found by the software, the text in this window is either light blue, indicating that the evaluation board is found, or red, indicating that the evaluation board cannot be found.

3. If the evaluation board is found, click in the window when the **Evaluation Software Ready** message appears.

The main window of the evaluation board software appears. Proceed to the **Guide to Programming the AD9552** section for more details about using the software.

4. If the evaluation board is not found, a dialog box appears that allows you to select an evaluation board to use while the software runs in standalone mode. Standalone mode is useful for viewing and generating register setup files.
5. If the evaluation board is not automatically detected when it is connected, choose **Select Evaluation Board** from the **I/O** menu, and then select Ezssp-0, Ezssp-1, or Ezssp-2 (see Figure 2).

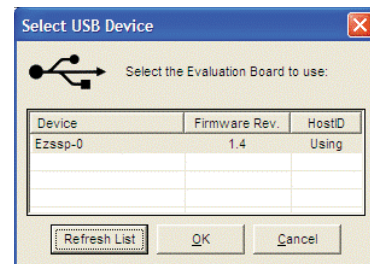


Figure 2. Select USB Device Window

GUIDE TO PROGRAMMING THE AD9552

The AD9552 can be programmed via an SPI port or by setting the logic levels on the frequency select pins of the device. To program the device using the serial port, the evaluation board software must be installed.

For pin programming, there are two options: manually use the dip switches or use the evaluation board software to override the settings of the dip switches and change the logic levels of the frequency select pins. Using the dip switches on the evaluation board to establish the logic levels on the pins allows the AD9552 to power on with preset conditions. Alternatively, you can use the software to override the settings of the dip switches on the evaluation board and change the logic levels on the frequency select pins.

USING AN SPI PORT

After the evaluation software is installed and the evaluation board is connected to a PC and loaded with the software, the following procedure is used to configure and lock the PLLs.

In this example, the crystal frequency is 26 MHz, and the output frequency is 622.08 MHz.

1. Ensure that Jumper JMP3 is positioned for PC control.
2. Verify that all five jumpers are in place on Connector P2.
3. Set the S1, S2, and S3 switches high. Set the S4 switch setting to high, except for RESET, which must be set to low (RESET is an active high pin).

These steps assume that the input signal is present, that the evaluation board has not been modified, and that the PLL loop filter is suitable for the application. However, this guide covers only simple PLL operation (that is, to start and run the PLL). For a detailed explanation of more advanced AD9552 features, see the [AD9552](#) data sheet. In addition, see the Software Operation section.

USING DIP SWITCHES (MANUAL CONTROL)

The following procedure explains how the AD9552 can be programmed manually by using the dip switches on the evaluation board to set the logic levels of the frequency select pins.

In this example, the crystal frequency is 26 MHz, and the output frequency is 622.08 MHz.

1. Ensure that Jumper JMP3 is positioned for manual control.
2. Verify that all five jumpers are removed on Connector P2.
3. Set the positions of the S3 dip switches to high to indicate a 26 MHz crystal is being used.
4. Set the positions of the S2 Y5 and Y4 dip switches to high and the positions of the S1 Y3 and Y0 dip switches to 0100.

5. Connect an oscilloscope, spectrum analyzer, or other lab equipment to any of the J3 to J6 SMA connectors on the upper right side of the board.
6. Power the evaluation board by plugging it into the USB port.
7. A frequency of 622.08 MHz should be observed on the OUT1 SMA connector.

If another output frequency is desired, remove the USB port. Then change the dip switch settings, and reapply the USB port connection.

After each dip switch setting, the AD9552 must be powered down by removing the USB cable to reprogram the AD9552. See the AD9552 data sheet for an explanation of pin programming.

USING SOFTWARE TO OVERRIDE DIP SWITCHES (SOFTWARE CONTROL)

The evaluation board software can be used to override the settings of the dip switches and apply a logic level to the AD9552 frequency selection pins.

After the evaluation software is installed and the evaluation board is connected to a PC and loaded with the software, the following steps are used to configure and lock the PLLs.

In this example, the crystal frequency is 26 MHz, and the output frequency is 622.08 MHz.

1. Ensure that Jumper JMP3 is positioned for PC control.
2. Verify that all five jumpers are in place on Connector P2.
3. Set the S1, S2, and S3 dip switch positions to high.
4. Select 26 MHz for the input frequency in the **XTAL Input:** box in the main window of the evaluation software (see Figure 3 and the Reference Input Boxes section for more information).
5. Select 622.08 MHz for the output frequency in the **Output Loop Config:** box in the main window of the evaluation software (see Figure 3).
6. A frequency of 622.08 MHz should be observed on the OUT SMA connector.

These steps assume that the input signal is present, that the evaluation board has not been modified, and that the PLL loop filter is suitable for the application. However, these steps are appropriate only for simple PLL operation (that is, to set up and run the PLL). See the AD9552 data sheet for more information about the various AD9552 features.

SOFTWARE OPERATION

The main window of the AD9552 evaluation board software is comprised of subsections that correspond to the major functional blocks of the AD9552 (see Figure 3). These subsections, most of which have their own window, are outlined in this section. From the main window, the window for each functional block can be accessed by clicking the appropriate box in the main window.

When a subsection window closes after clicking **OK**, you may notice that the **LOAD** button on the main window starts blinking. This indicates that there are settings that have not been loaded to the AD9552 evaluation board. Click **LOAD** to load these settings to the evaluation board.

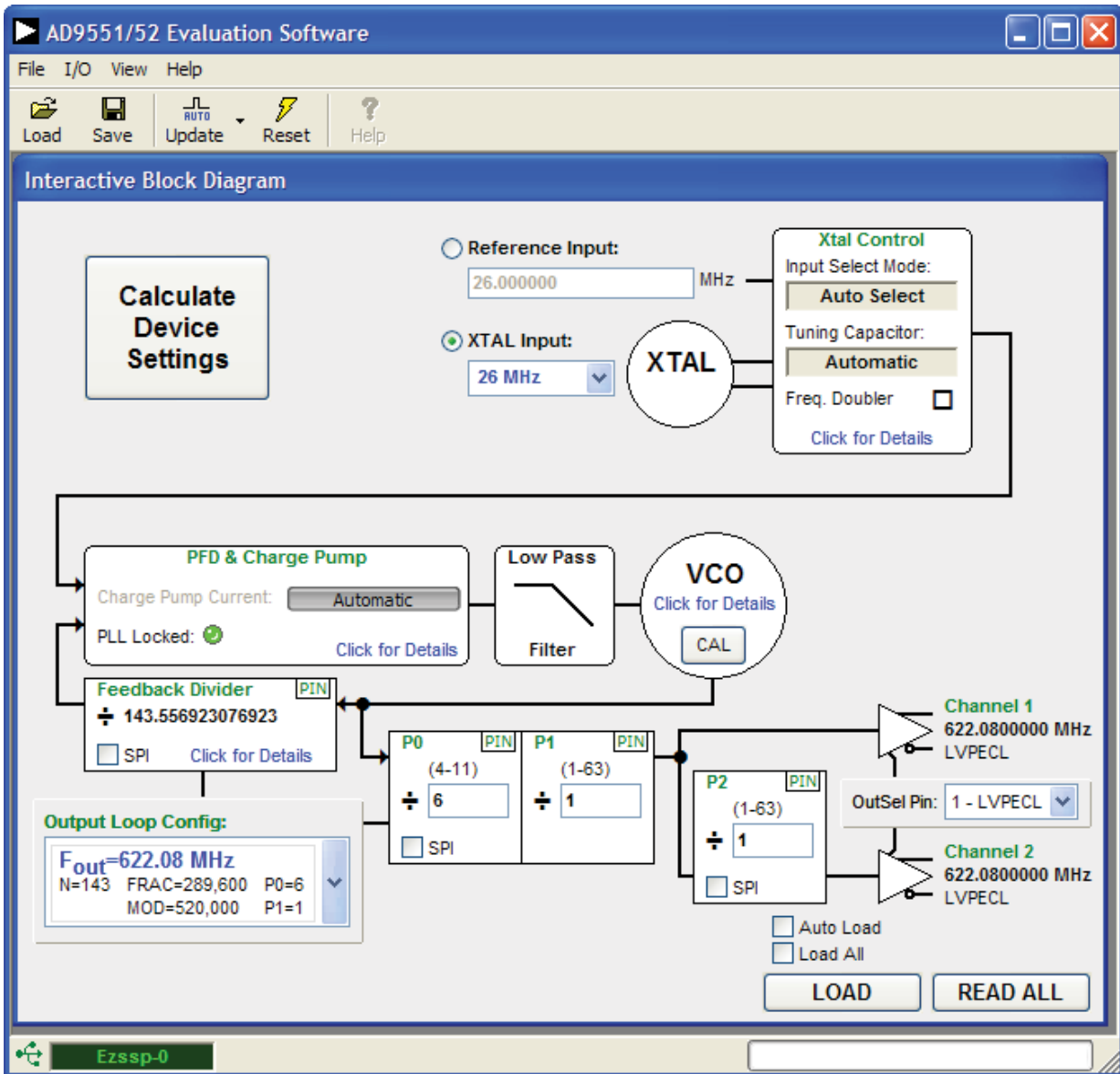


Figure 3. AD9552 Evaluation Software Main Window

MENU BAR OF MAIN WINDOW

File Menu

The **File** menu allows you to load a previously saved AD9552 setup file or to save a new AD9552 setup file. A setup file (.stp) is a text file that contains the AD9552 register setup file, plus any evaluation board settings.

To load a previously saved setup file, select **Load Setup** from the **File** menu. Note that you must still perform a VCO calibration. Alternatively, to save a new setup file, select **Save Setup** from the **File** menu.

To exit the evaluation software, select **Exit** from the **File** menu. However, note that no checking is done to ensure that the existing setup is saved.

I/O Menu

The AD9552 evaluation system allows one PC to control multiple evaluation boards. The **Select USB Device** window, accessed by choosing **Select Evaluation Board** from the **I/O** menu, allows you to select which evaluation board the software controls (see Figure 4). Click **Refresh List** to detect a recently connected evaluation board.

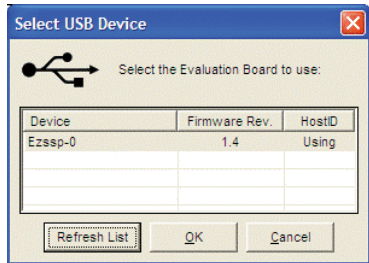


Figure 4. Select USB Device Window

Selecting **Configure Serial Port** from the **I/O** menu allows you to control how the USB controller interacts with the AD9552 serial port (see Figure 5) by configuring Register 0x00 (shown as 00H in Figure 7).

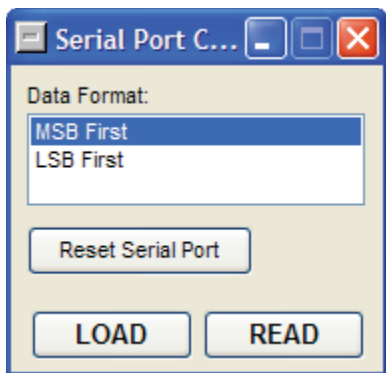


Figure 5. Serial Port Configuration Window

View Menu

The **Debug** window, accessed by selecting **Debug Window** from the **View** menu, allows you to write and read registers directly and to force the various configuration pins high or low (see Figure 6).

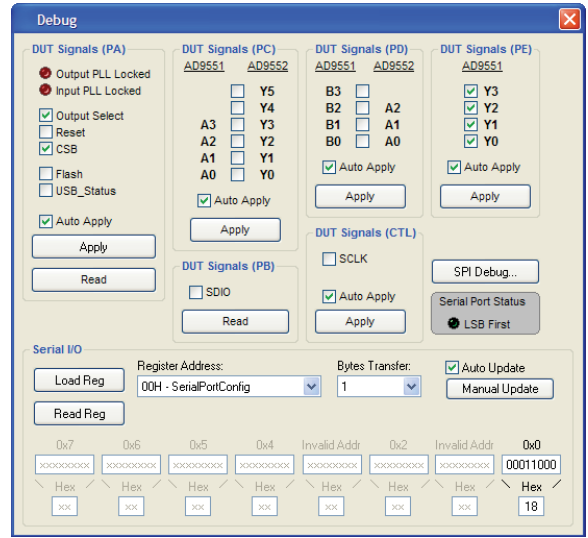


Figure 6. Debug Window

The **Register Map Debug** window, accessed by selecting **Register Debug Window** from the **View** menu, allows you to write and read registers (see Figure 7).

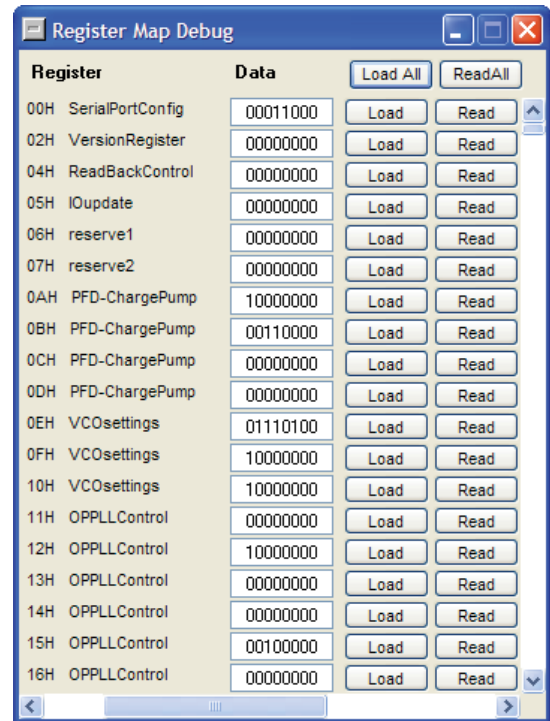


Figure 7. Register Map Debug Window

Help Menu

Selecting **Help** from the **Help** menu opens the **About AD9551_AD9552 Evaluation Software** window, which contains information such as revision number, region information, and contact information.

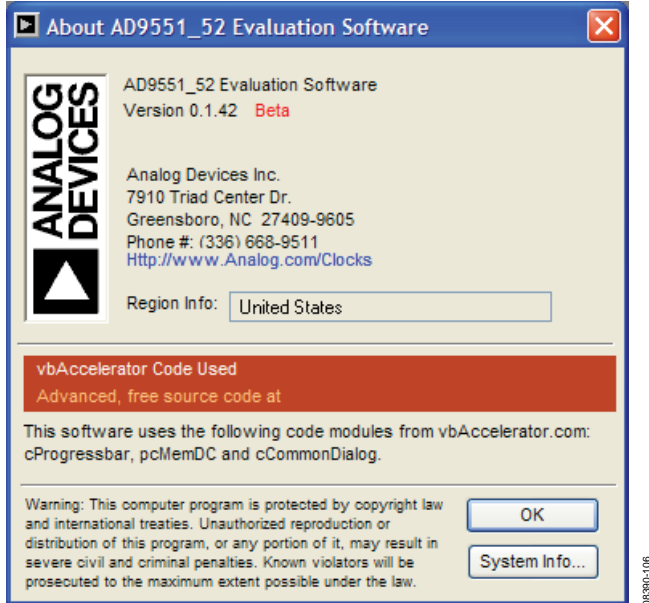


Figure 8. AD9552 Evaluation Software Window

BUTTON BAR OF MAIN WINDOW

The buttons described in this section provide easy access to common features.

Load and Save

Clicking **Load** and **Save** allows you to load and save an AD9552 setup file. A setup file (.stp) is a text file that contains the AD9552 register setup file, plus any evaluation board settings.

Update

Clicking **Update** toggles the I/O update bit (Register 0x05, Bit 0) of the AD9552.

Reset

Clicking **Reset** resets the evaluation board and restores the AD9552 to its default power-up state. In addition, clicking **Reset** enables the VCO calibration function by writing the enable VCO calibration bit.

USING SOFTWARE TO CONTROL THE FUNCTIONAL BLOCKS OF THE AD9552

The AD9552 evaluation software contains subsections that correspond to the major functional blocks of the AD9552. These subsections, most of which have their own window, are described in this section.

You can access each window by clicking **Click for Details** in the appropriate subsection box of the main window.

Most subsection boxes in the main window have a check box labeled **SPI**. If this box is selected, the software allows serial

port writes when conditions are changed in the corresponding subsection window.

When a subsection window closes after clicking **OK**, you may notice that the **LOAD** button on the main window starts blinking. This indicates that there are settings that have not been loaded to the AD9552 evaluation board. Click **LOAD** to load these settings to the evaluation board.

Reference Input Boxes

The reference input boxes, which are labeled **Reference Input:** and **XTAL Input:** in the main window, allow you to select an input frequency for the external reference input (J1 to REF) or the XTAL frequency.

Crystal Control

Clicking **Click for Details** in the **Xtal Control** box of the main window accesses the **Xtal** window (see Figure 9 for an example of the crystal control window).

If a crystal frequency is chosen that is less than 16 MHz, the doubler is automatically enabled and controlled internally from the AD9552.

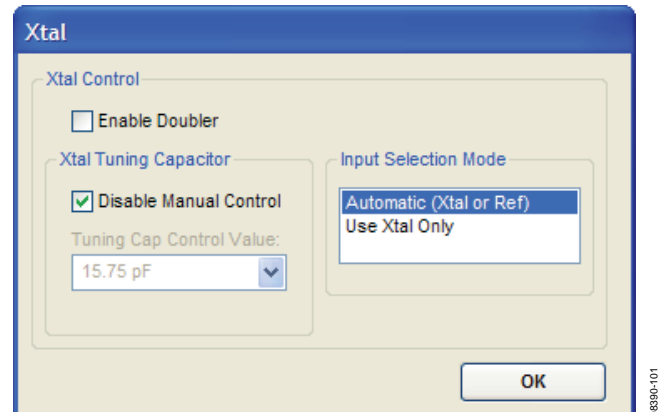


Figure 9. Crystal Control Window

PFD and Charge Pump Window

Clicking **Click for Details** in the **PFD & Charge Pump** box of the main window accesses the **PFD and Charge Pump** window (see Figure 10).

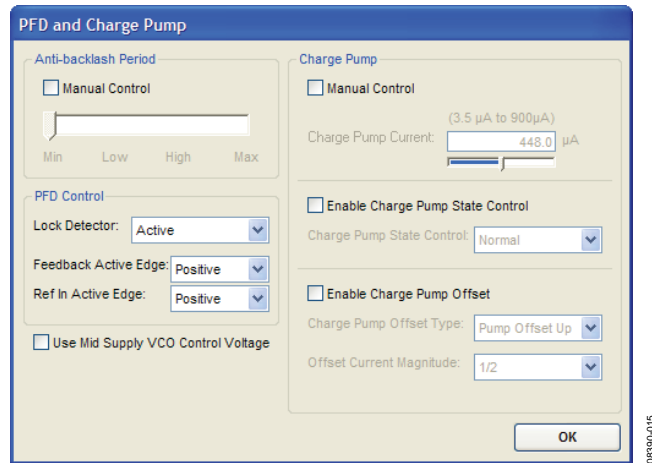


Figure 10. PFD and Charge Pump Window

VCO Control Window

Clicking **Click for Details** in the **VCO** box of the main window accesses the **VCO Control** window (see Figure 11).

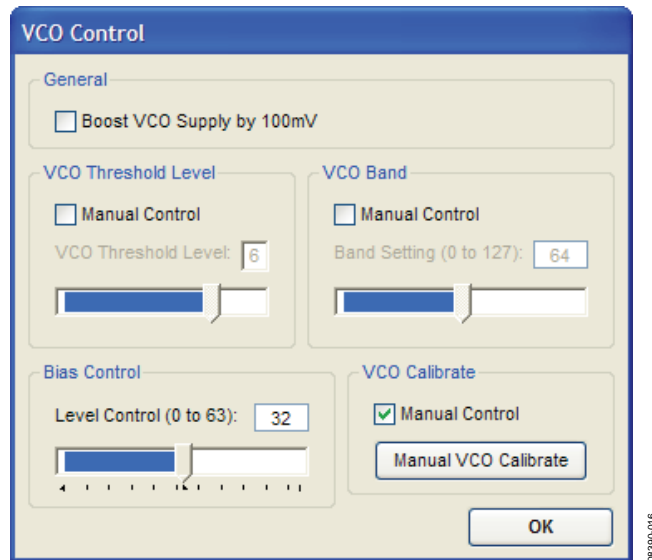


Figure 11. VCO Control Window

Feedback Window

Clicking **Click for Details** in the **Feedback Divider** box of the main window accesses the **Feedback** window, which allows you to change the feedback divider settings (see Figure 12).

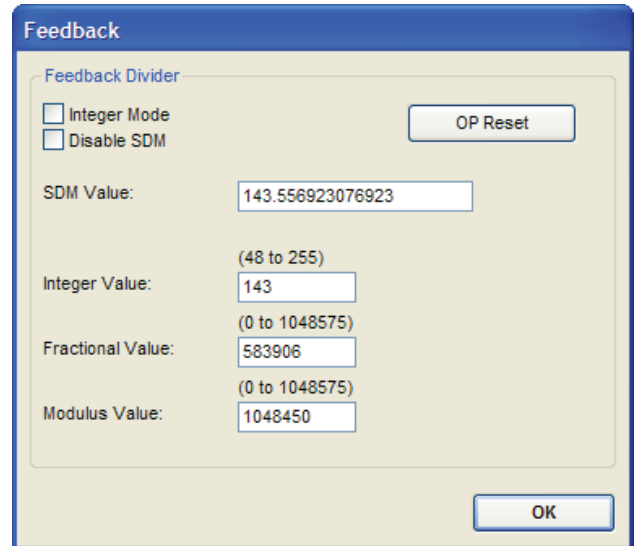


Figure 12. Feedback Window

P0, P1, and P2 (Output Dividers) Boxes

Selecting the **SPI** check box in any of the divider settings boxes (that is, the **P0**, **P1**, or **P2** box) in the main window enables a drop-down selection of predetermined divider settings (see Figure 13).

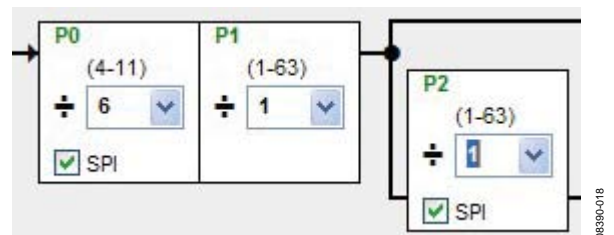


Figure 13. P0, P1, and P2 Boxes (in Main Window)

Output Loop Config: Box

The **Output Loop Config:** box can be used to change the output frequency of the AD9552. This control changes the logic levels of the output frequency selection pins of the AD9552 (see Figure 14).

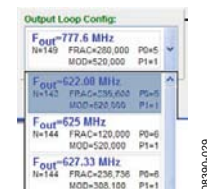


Figure 14. Output Loop Config: Box (in Main Window)

OutSel Pin: Box

The **OutSel Pin:** drop-down box (see Figure 15) in the main window controls the logic level on the OUTSEL pin of the AD9552. However, this value can be overwritten by using the SPI control register.



Figure 15. OutSel Pin Box (in Main Window)

USING SOFTWARE TO CALCULATE THE DEVICE SETTINGS

The following procedure explains how the evaluation board software can be used to automatically calculate and set the settings to program the AD9552.

In this example, the crystal frequency is 26 MHz, and the output frequency is 122.88 MHz.

1. Ensure that Jumper JMP3 is positioned for PC control.
2. Verify that all five jumpers are in place on Connector P2.
3. Set the positions of the S1, S2, and S3 dip switches to high.
4. Click **Calculate Device Settings** in the main window of the evaluation board software.

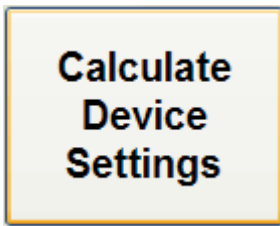


Figure 16. Calculate Device Settings Button (in Main Window)

5. The **Enable Control?** window, shown in Figure 17, appears.

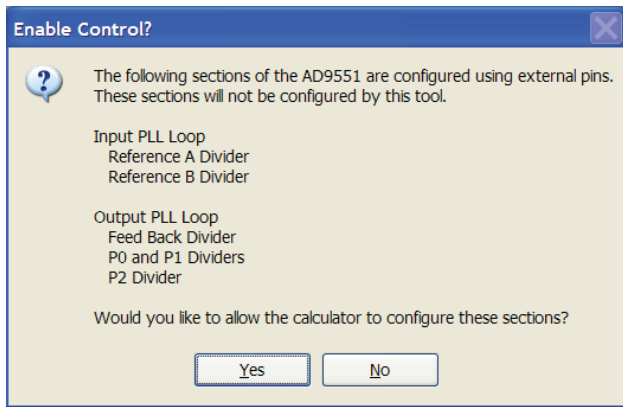


Figure 17. AD9552 Serial Port Programming Warning

6. Click **Yes** to enable serial port register programming.
7. The **Calculator** window, shown in Figure 18, appears.

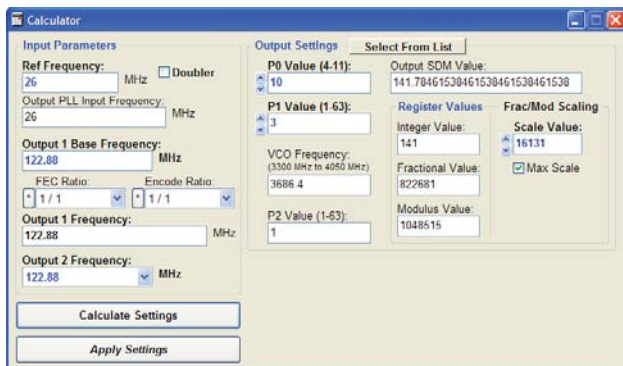


Figure 18. Calculator Window

8. Type 26 into the **Ref Frequency:** box and 122.88 into the **Output 1 Base Frequency:** box.
9. Click **Calculate Settings**. Because the AD9552 is designed for flexibility, there is more than one possible divider settings to achieve the same output frequency. Click **Select From List**, located at the top of the **Output Settings** box (see Figure 18). This generates all possible solutions. The user should click each solution and try to determine which has lowest spur for example.

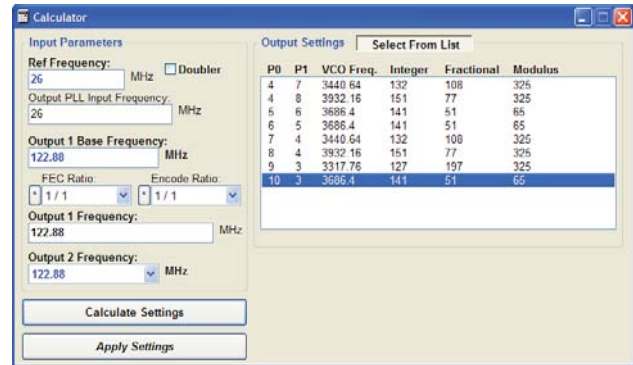


Figure 19. Calculator Window List

10. Click **Apply Settings**. You should now be able to measure 122.88 MHz at the OUT1 SMA connector.

ROUTING 26 MHz TO TEST PORT

The following procedure explains how to route the 26 MHz crystal oscillator to the AD9552 test port. The test port is SMA J7 and is labeled output PLL locked.

In this example, the crystal frequency is 26 MHz, and the output frequency is 122.88 MHz.

1. Ensure that Jumper JMP3 is positioned for PC control.
2. Verify that all five jumpers are in place on Connector P2.
3. Set the positions of the S1, S2, and S3 dip switches to high.
4. Click **Calculate Device Settings** in the main window of the evaluation board software.

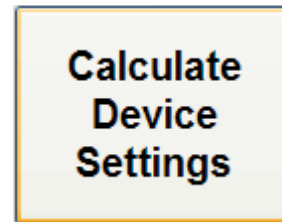


Figure 20. Calculate Device Settings Button (in Main Window)

5. The **Enable Control?** window, shown in Figure 21, appears.

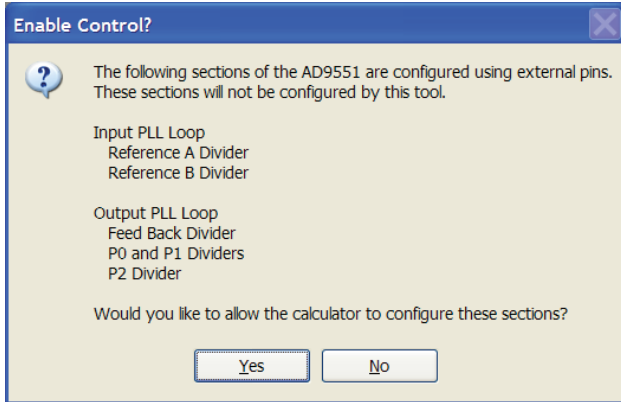


Figure 21. AD9552 Serial Port Programming Warning

6. Click **Yes** to enable serial port register programming.
7. The **Calculator** window, shown in Figure 22, appears.

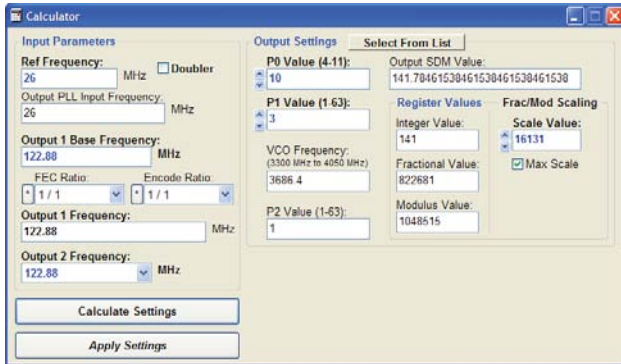


Figure 22. Calculator Window

8. Type 26 into the **Ref Frequency:** box and 122.88 into the **Output 1 Base Frequency:** box.

9. Click **Calculate Settings**, and then click **Apply Settings**. You should now be able to measure 122.88 MHz at the OUT1 SMA connector.
10. From the **View** menu in the main window, select **Register Debug Window**. The window shown in Figure 23 appears.

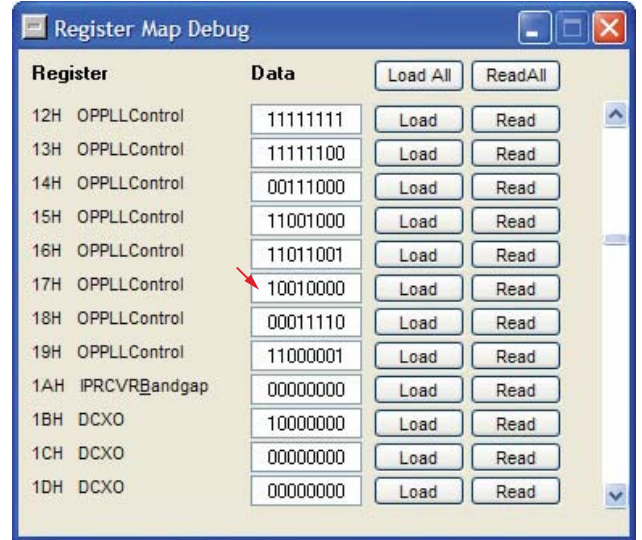


Figure 23. Register Debug Window

11. Bit 3 of Register 0x17 must be set to 1 to enable the PLL locked pin as a test port. By default, the 26 MHz crystal frequency is present at the output.
12. The ac signal has a dc offset of approximately 1.6 V. Be aware that some test equipment has a limit of 0 V dc; therefore, a dc block must be used in such cases.

NOTES

ESD CAUTION

**ESD (electrostatic discharge) sensitive device.**

Charged devices and circuit boards can discharge without detection. Although this product features patented or proprietary protection circuitry, damage may occur on devices subjected to high energy ESD. Therefore, proper ESD precautions should be taken to avoid performance degradation or loss of functionality.

Evaluation boards are only intended for device evaluation and not for production purposes. Evaluation boards are supplied "as is" and without warranties of any kind, express, implied, or statutory including, but not limited to, any implied warranty of merchantability or fitness for a particular purpose. No license is granted by implication or otherwise under any patents or other intellectual property by application or use of evaluation boards. Information furnished by Analog Devices is believed to be accurate and reliable. However, no responsibility is assumed by Analog Devices for its use, nor for any infringements of patents or other rights of third parties that may result from its use. Analog Devices reserves the right to change devices or specifications at any time without notice. Trademarks and registered trademarks are the property of their respective owners. Evaluation boards are not authorized to be used in life support devices or systems.