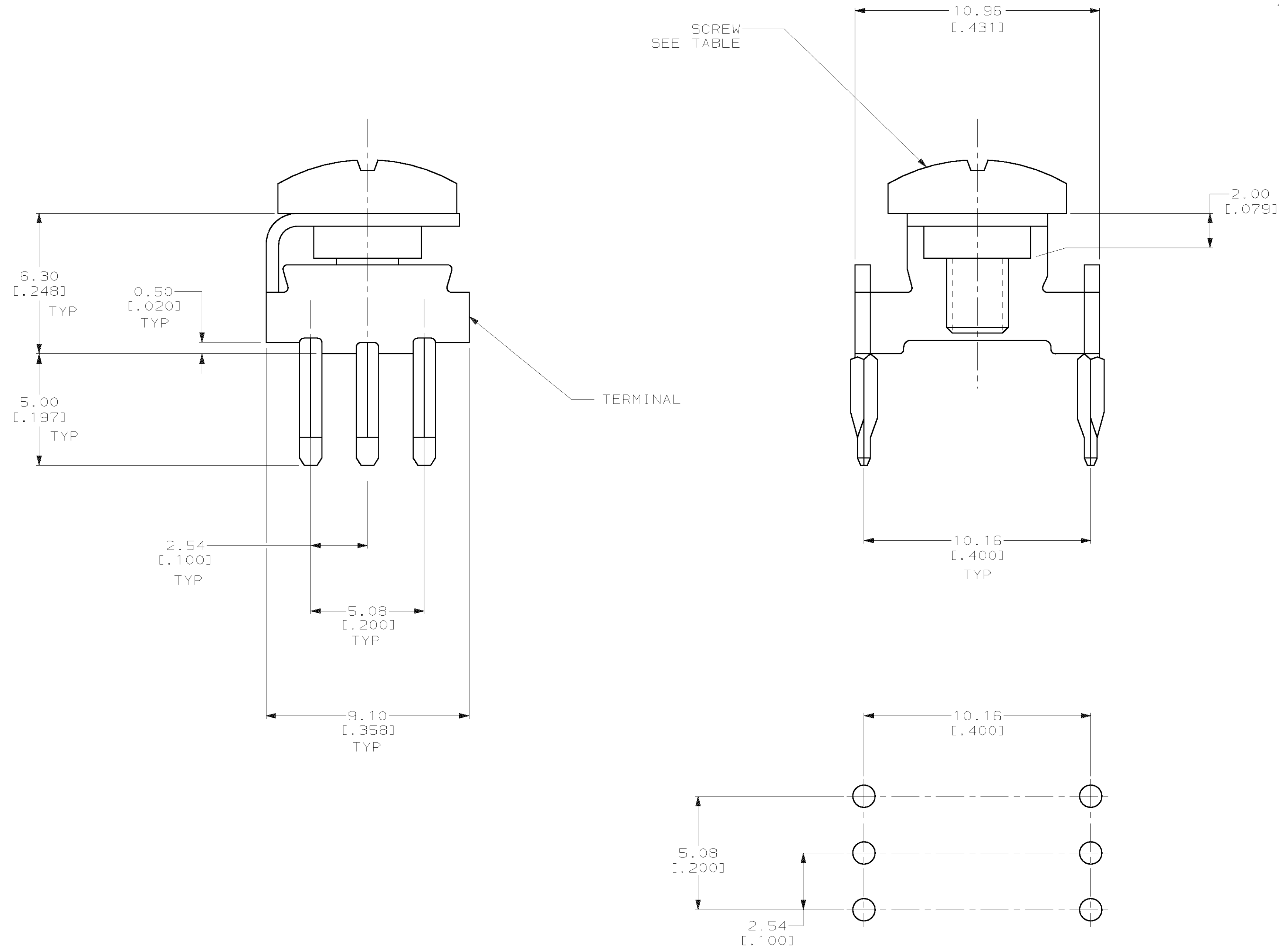


LOC		DIST		P		F		ZONE		LTR		REVISIONS		DATE	APPD	
FT	0												REVISIONS			
													DESCRIPTION			
													C	REVISE PER ECN 063B-0428-00	24AUG00	SU/SH

- ① TERMINAL: PHOSPHOR BRONZE; SCREW: STAINLESS STEEL.
- ② 2.54μm[.000100] MIN TIN OVER 1.25μm[.000050] MIN NICKEL.
- ③ PASSIVATED.



RECOMMENDED P.C. BOARD LAYOUT

PLATED THROUGH HOLE SPECIFICATION	
DRILLED HOLE	1.6±0.025
Cu- THICKNESS	25-75 μm
SnPb- THICKNESS	4-10 μm
FINISHED HOLE	1.39-1.54
FINISHED HOLE (AFTER REFLOW)	1.36-1.54

THIS DRAWING IS A CONTROLLED DOCUMENT FOR AMP INCORPORATED. IT IS SUBJECT TO CHANGE AND THE CONTROLLING ENGINEERING ORGANIZATION SHOULD BE CONTACTED FOR THE LATEST REVISION.

DO NOT SCALE PRINT. UNLESS SPECIFIED DIMENSIONS IN mm [INCHES] TOLERANCES ON: 2 PLC DEC ± 0.13 [0.005] 3 PLC DEC ± - ANGLES ± -	DR 11-01-94 D.BROCKWAY CHK 11-11-94 R.STONE APPD 11-11-94 T.COULSON APPD 11-11-94 T.COULSON
MATERIAL	PRODUCT SPEC -
FINISH	APPLICATION SPEC -
SCREW: ③	WEIGHT -
TERMINAL: ②	

M4 X 0.5	213816-2	
M4 X 0.6	213816-1	
SCREW	PART NUMBER	
<b>AMP</b> AMP Incorporated Harrisburg, PA 17105-3608		
NAME <b>POWER TAP ASSY, 6 POSN</b>		
SIZE	CAGE CODE	DRAWING NO
D	00779	C-213816
SCALE	8:1	SHEET
		1 OF 1