

Technical specification:

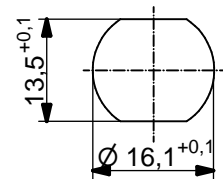
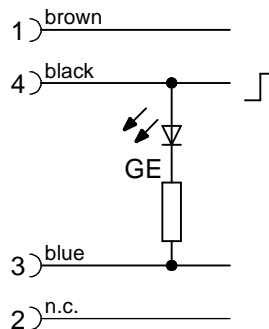
Rated voltage: IEC 61076-2-101	10 - 30 V
Current rating: IEC 61076-2-101	4 A at 40°C
Insulation resistance: IEC 60512	≥100 MΩ
Pollution degree: IEC 60664-1	3/2
Degree of protection: IEC 60529	IP 67, in mated condition
Temperature range:	-30°C ... +70°C
Mating cycles:	≥100
LED consumption:	<10 mA

Materials:

Contact:	CuZn
Contact plating:	Nickel, gold plated
Contact carrier:	PBT GF, UL 94
Light conductor:	PA12, transparent
Sealing:	FPM
Socket housing:	CuZn, nickel plated
Grouting:	Polyurethane-resin, UL 94

Installation specification:

recommended torque:	1-1,2 Nm
Conec installation tool:	Torque wrench: 36-000200 Insert across flats 17: 36-000230



Minimum wall thickness 1,5mm, alternativ panel cut-out d=16,1

Part no:	Description:	Pos	Length L:	Wire:
43-01867	SAL - 12 - FK3 - 4L - 0,5	4	0,5m	AWG 22, PVC, UL 1007
43-xxxxx	SAL - 12 - FK3 - 4L - ...	4	x	

DO NOT ALTER CAD DRAWING BY HAND Directive 2002/95/EC RoHS compliant	Index: b 20.02.13 MG Ä4631 Data sheet revised, technical specification changed, materials corrected	dim. in mm	title: Female socket M12x1,5 with wire, frontmounting	
	tolerance of wire: L ≤ 0,5m: L + 20mm L > 0,5m: L + 4%	date		
	general tolerance: 0 ± 0,50mm 0,0 ± 0,25mm 0,00 ± 0,10mm	drawn	22.09.11	Franz
	THIS DRAWING MAY NOT BE COPIED OR REPRODUCED IN ANY WAY, AND MAY NOT BE PASSED ON TO A THIRD PARTY WITHOUT WRITTEN PERMISSION. OWNERSHIP AND COPYRIGHT OF CONEC GmbH	appd.	22.09.11	Mankopf
		dwg no: 43K1A1467		
		part no: see table		