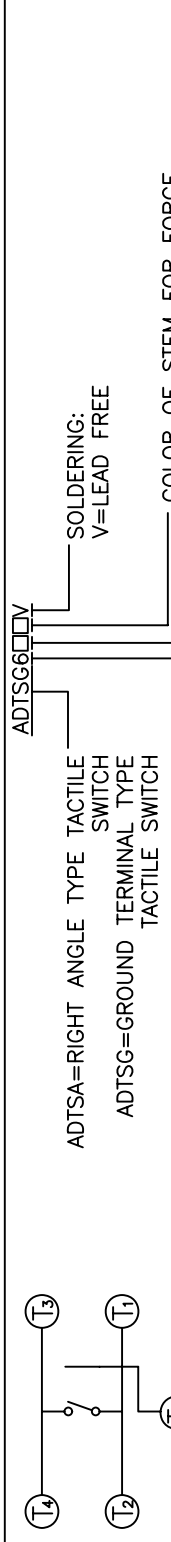


DATE	SYM	REVISION RECORD	DWN.	CK.



ADTSG66□□V

ADTSA=RIGHT ANGLE TYPE TACTILE SWITCH

ADTSG=GROUND TERMINAL TYPE TACTILE SWITCH

PROD. SIZE 6=6X6mm

DIMENSION H:

1=.169 [4.30]

2=.197 [5.00]

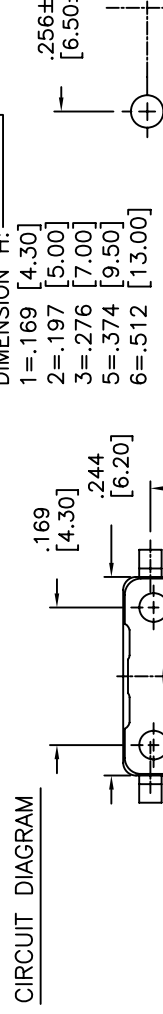
3=.276 [7.00]

5=.374 [9.50]

6=.512 [13.00]

SOLDERING: V=LEAD FREE

COLOR OF STEM FOR FORCE N=BROWN, 160gf R=RED, 260gf S=SALMON, 320gf



DESCRIPTION: MECHANICAL CONTACT SWITCH

SPECIFICATIONS:

STORAGE TEMP. RANGE: -30°C TO +80°C

OPERATING TEMPERATURE RANGE: -25°C to +70°C

RATING: 50mA @ 12VDC

CONTACT RESISTANCE: 100mohm MAX.

INSULATION RESISTANCE: 100Mohm MIN. 500VDC.

DIELECTRIC STRENGTH: 250VAC FOR 1 MINUTE

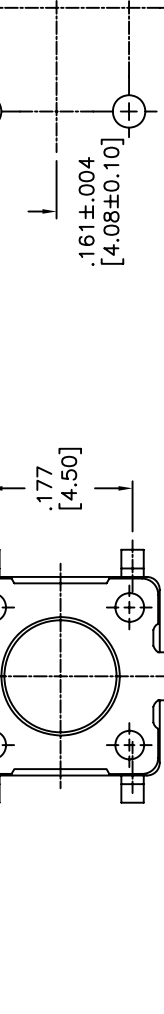
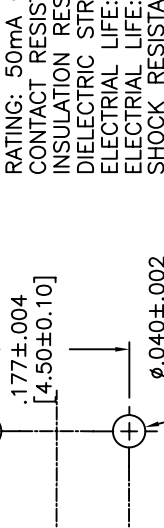
ELECTRICAL LIFE: 100,000 CYCLES FOR 320gf, 260gf

ELECTRICAL LIFE: 200,000 CYCLES FOR 160gf

SHOCK RESISTANCE: 50G PER METHOD 213B, MIL-STD-202F

VIBRATION RESISTANCE: PASSES METHOD 201A, MIL-STD-202F

CONTACT ARRANGEMENT: 1 POLE, 1 THROW.



MATERIALS:

COVER: STEEL, TIN PLATED

CONTACT DISC: PHOSPHOR BRONZE WITH SILVER CLADDING

TERMINAL: 0.12THK X.028 [0.30 THK X 0.70] BRASS WITH SILVER PLATING

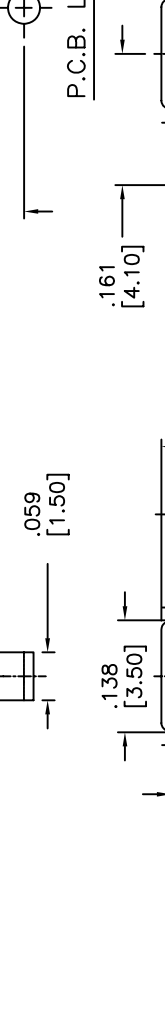
BASE: UL 94V-0 NYLON THERMOPLASTIC COLOR: BLACK

STEM: UL 94V-0 NYLON THERMOPLASTIC

ROHS COMPLIANT

SOLDERING: IR REFLOW: 260°C MAX. HAND SOLDERING: 350°C MAX. FOR 5 SECONDS MAX. (30 WATT IRON MAX.)

LEAD FREE PROCESS COMPATIBLE



APEN HAVERTHILL, MA.

APEN logo

SCALE 6:1

DRAWN CJD

APPROVED PJD

TOLERANCES (EXCEPT AS NOTED)	INCH (MM)	SCALE
DECIMAL ± .008		6:1
FRACTIONAL ± —		

TITLE	DATE	DRAWING NUMBER	REV
TACTILE SWITCH W/ GROUND TERMINAL	06/23/05	ADTSG66**V	A

Q.A. INSPECT

DESIGNATES CRITICAL DIMENSION

APEN CONFIDENTIAL

THIS DOCUMENT CONTAINS INFORMATION WHICH IS THE EXCLUSIVE PROPERTY OF APEN COMPONENTS, INC. DISTRIBUTION, REPRODUCTION OR USE BY OTHERS IS NOT PERMITTED WITHOUT THE EXPRESS WRITTEN CONSENT OF APEN COMPONENTS, INC.

DTSG62~66 □ V	0.5 MAX	.0196 MAX
DTSG61 □ V	0.4 MAX	.016 MAX
PROD. NO.	I	INCHES.