

ATLANTIC VERSION TERMINATOR INTERFACE ADAPTER. PART NUMBER, REVISION, DESCRIPTION, FEED TYPE. CONVERT TO, PART NUMBERS REQUIRED.

APPLICATOR DATA. CRIMP SIZE, TYPE, WIRE, INSUL. APPLICATOR INSTRUCTIONS 408-10390.

TERMINAL DATA: TE TERMINAL TE CRIMP SPECIFICATION. TERMINAL NAME: RECEPTACLE, POSITIVE-LOCK, .250 SERIES. WIRE STRIP LENGTH, INSULATION DIAMETER RANGE.

WIRE SIZE, CRIMP HEIGHT mm [INCH], CRIMP HEIGHT REFERENCE SETTING.

- 1 RECOMMENDED SPARE PARTS
2 GREASE BEARING SURFACES LIGHTLY
3 LUBRICATE DAILY PER THE APPLICATOR INSTRUCTION SHEET SUPPLIED WITH THE APPLICATOR.
4 APPLICATOR SPECIFIC DATA TO BE ENTERED INTO BLANK MEMORY CHIP AT ASSEMBLY...
5 ADJUSTMENT OF THE STRIPPER MAY BE REQUIRED WHEN MOVING THE APPLICATOR BETWEEN BENCH AND LEADMAKER APPLICATIONS.
6 APPLY PART NUMBER 1-23419-5 LOCTITE TO THREADS OF ITEMS 50, 62.
7 GREASE THREADS, GROOVE AND O-RING ON ITEMS 35 & 252.
8 MAGNET, ITEM 166 MUST BE ORIENTED CORRECTLY IN ORDER TO PROPERLY ACTUATE THE COUNTER.
9 CRIMP HEIGHT REFERENCE SETTING WAS THE SETTING USED WHEN THE APPLICATOR WAS QUALIFIED AT THE FACTORY.
10 SPARE FEED CAM STORAGE LOCATION REFER TO INSTRUCTION SHEET FOR ADDITIONAL INFORMATION.
11 THE RECOMMENDED SET-UP FOR END FEED APPLICATORS IS POST-FEED WITH ITEM 2119653-1.
12 WHEN ASSEMBLING -6 NON-CRIMP HEIGHT ADJUST APPLICATOR USE SHIM PACK 2119957-2 TO ALIGN APPLICATOR'S MAXIMUM WIRE CRIMP HEIGHT AT NORMAL TERMINATOR SHUT HEIGHT

*WARNING
ON INSTALLATION, SET WIRE DISC, ITEM 40 TO LARGEST WIRE SIZE SETTING. USE OF SETTINGS BELOW MINIMUM REQUIRED CRIMP HEIGHT SETTING WILL CAUSE DAMAGE TO CRIMP TOOLING.

Table with 3 columns: PART NO, DESCRIPTION, ITEM NO. Includes items like APPLICATOR SHIM PACK, O-RING, PUSH ROD, BUSHING, FEED CAM, DETENT PIN, SPRING, RAM, AMP STYLE, END FEED, NON-ADJUST.

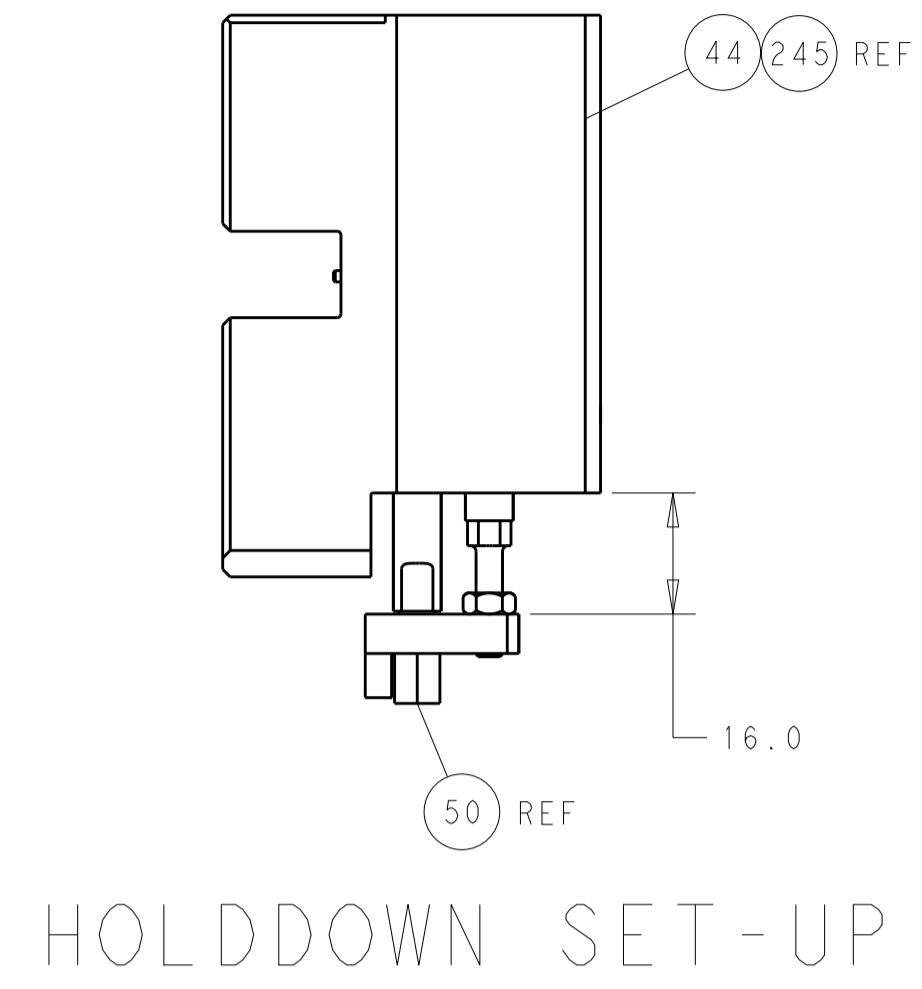
ATLANTIC VERSION
Shown on sheets 1 of 4 & 2 of 4
(Pacific version shown on sheets 3 of 4 & 4 of 4)

REVISIONS table with columns: REVISION, DESCRIPTION, DATE, DWN, APVD.

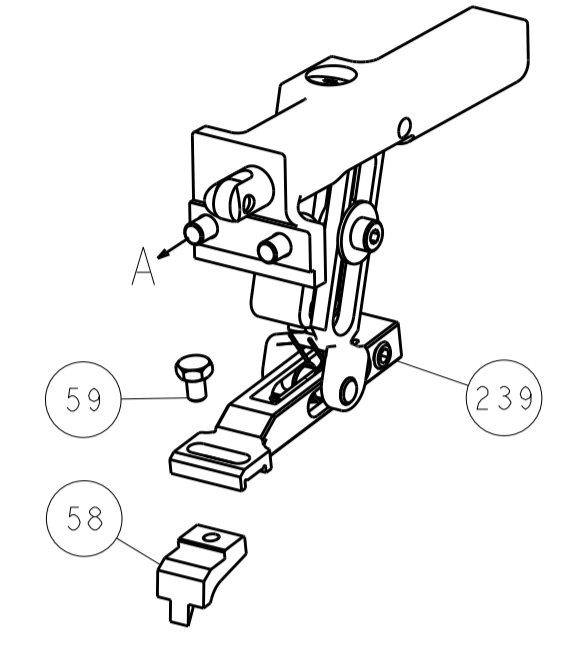
Main parts list table with columns: QTY, PART NO, DESCRIPTION, ITEM NO. Lists various components like CAM, SNAIL, INSULATION ADJUSTMENT, WASHER, WAVE SPRING, CREST-TO-CREST, RETAINER, INSULATION DIAL, SHCS, LOW HEAD, RoHS, M5 X 10, MECHANICAL FEED ASSEMBLY, AIR FEED MODULE, TAG, IDENTIFICATION, FEED FINGER ASSEMBLY, EF, PIN, SLOTTED SPRING 3.0 X 14.0, SPRING, COMPRESSION, GUIDE PIN, HOLDDOWN, RING, RETAIN, EXTERN, 3/16 CRESCENT, MAGNET, RARE EARTH HIGH ENERGY, COUNTER, MAGNETIC, SPRING, FEED FINGER, PIN, RETAIN, GRVD, 3/16 X .854, MEMORY CHIP, PROGRAMMED, SERVO FEED LATCH ASM, SPACER, CRIMPER, DOCUMENTATION PACKAGE, SCR, SET, FLT POINT M3 X 10.0, TAG, IDENTIFICATION, SCREW, DRIVE, RH, RoHS, 2 X .188, HOLDDOWN, TERMINAL, SHCS, LOW HEAD, RoHS, M4 X 20, LIMITER, ADJUSTMENT BOLT, SCR, SET, SOC, CONE POINT, M3 X 4.0, SCR, BHSC, RoHS (M4 X 8), SCR, HEX HD CAP, M4 X 6.0, FEED FINGER, SHCS, LOW HEAD, RoHS, M4 X 8, SCR, SKT HD CAP, RoHS, M4 X 16, NUT, HEX, REG, RoHS, M4, NUT, HEX, REG, RoHS, M3, NUT, LOCK, HEX, TORQUE (M4), NUT, HEX, REG, RoHS, M3.5, PAWL, EF, AIR, STANDOFF, HOLD-DOWN, SCR, SKT HD CAP M4 X 6.0, FEED CAM, PRE FEED, FEED CAM, POST FEED, APPLICATOR BASIC ASSEMBLY, EF, RAM, AMP STYLE, END FEED, SCR, BHSC, RoHS (M8 X 25), DISC, NUMBERED FA WIRE ADJUSTMENT, APPLICATOR SHIM PACK, RAM WASHER, PRECISION, FA HEAD, ATLANTIC STYLE, BOLT, ADJUSTMENT, WASHER, FLAT, REG M4, SCR, SKT HD CAP, RoHS, M4 X 20, SCR, SKT HD CAP, RoHS, M4 X 10, STRIPPER (MACHINING), STUD, THREADED, PLATE, STRIP GUIDE, PLATE, STRIP HOLD DOWN, SPRING, COMPRESSION, DRAG, GUIDE, LOWER STRIP, SCR, BHSC, RoHS (M6 X 12), SPACER, SPACER, HOLD-DOWN, PLATE, REAR SHEAR, PLATE, FRONT SHEAR, ANVIL, COMBINATION, BLADE, SLUG, SPACER, BLOCK, FL CRIMPER SPACER, CRIMPER, INSULATION F PREMIUM, SPACER, CRIMPER, CRIMPER, WIRE PREMIUM.

Technical drawing information including dimensions, tolerances, material, finish, weight, scale, and drawing number (00779).

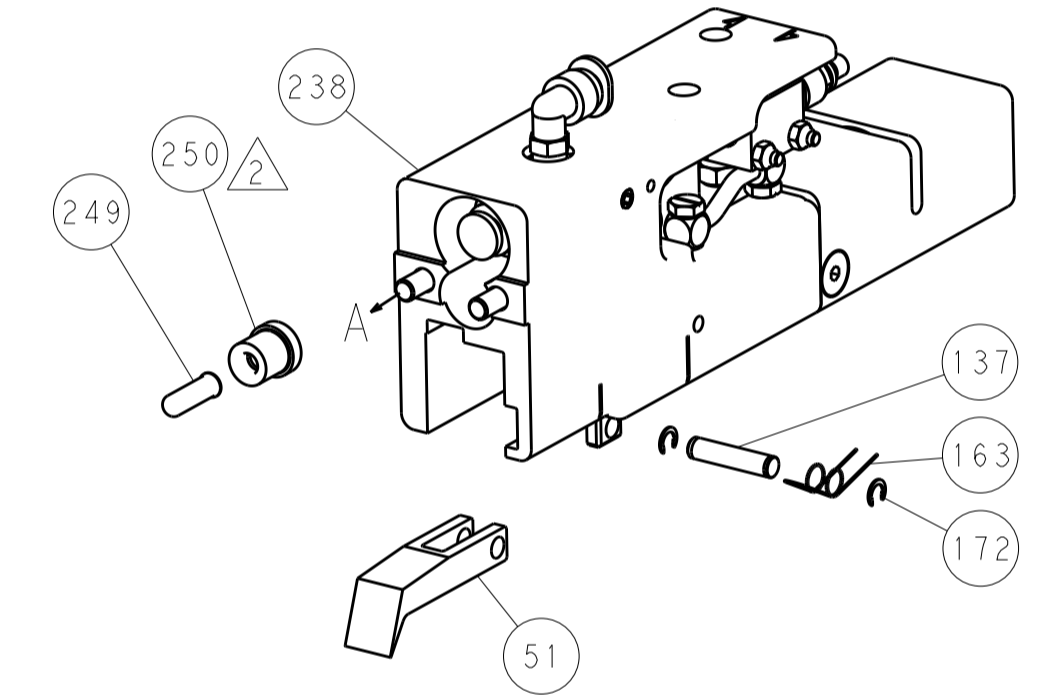
| LOC | DIST | REV | DATE | BY | APPV |
|-----------|------|-----|-------------|------|------|
| A | 66 | | | | |
| REVISIONS | | | DESCRIPTION | DATE | BY |
| | | | SEE SHEET 1 | | |



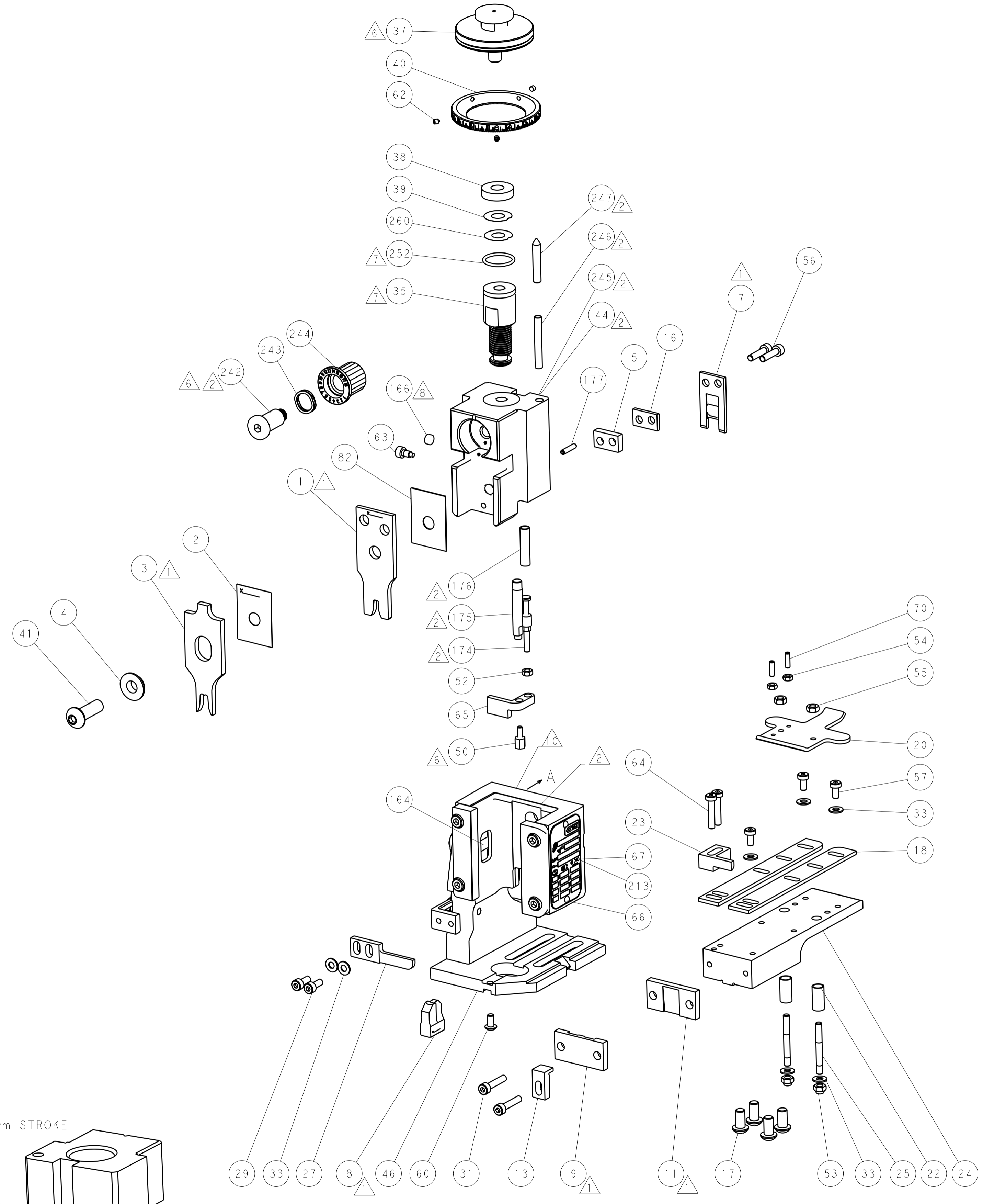
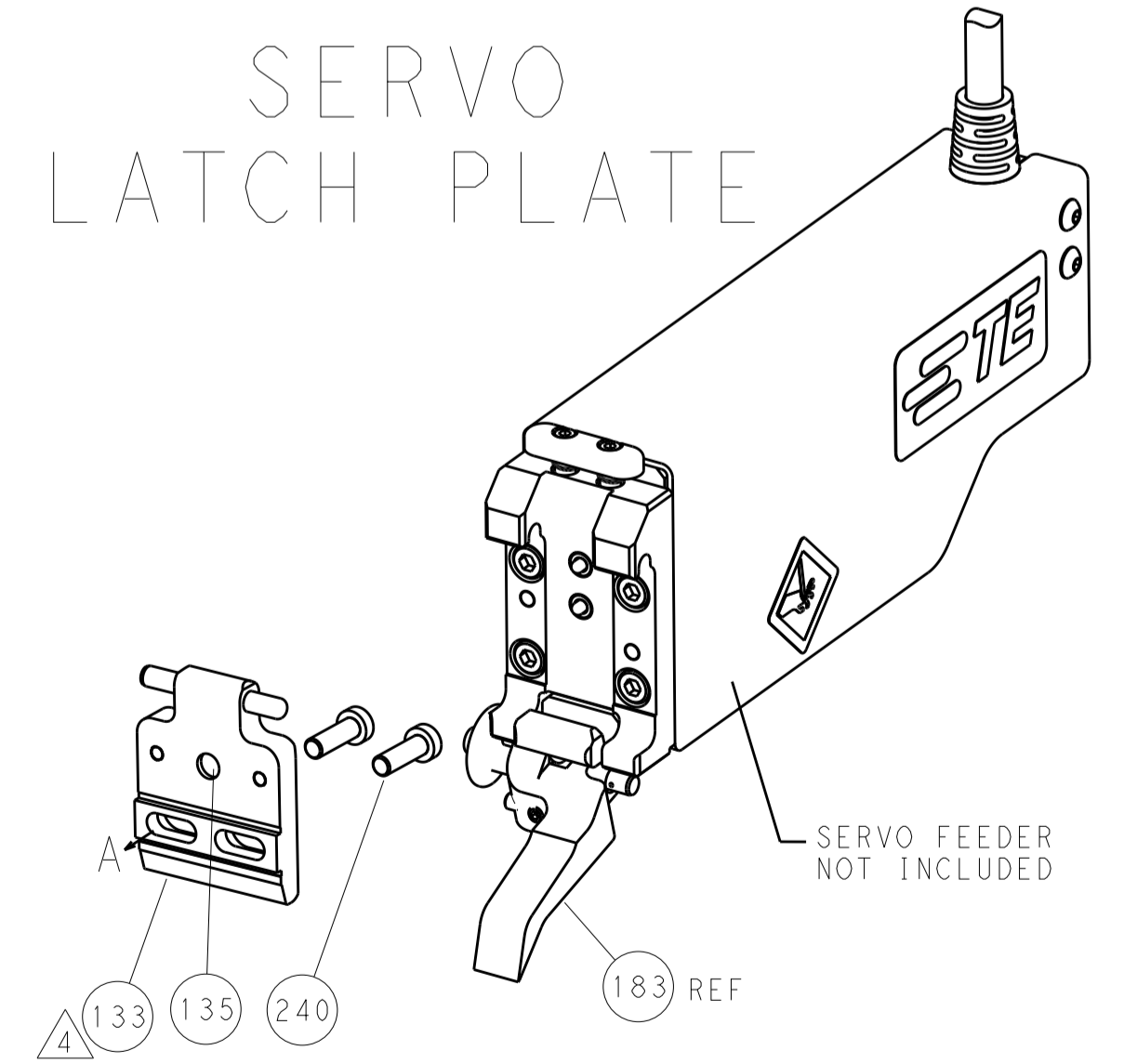
FEED TYPE
MECHANICAL



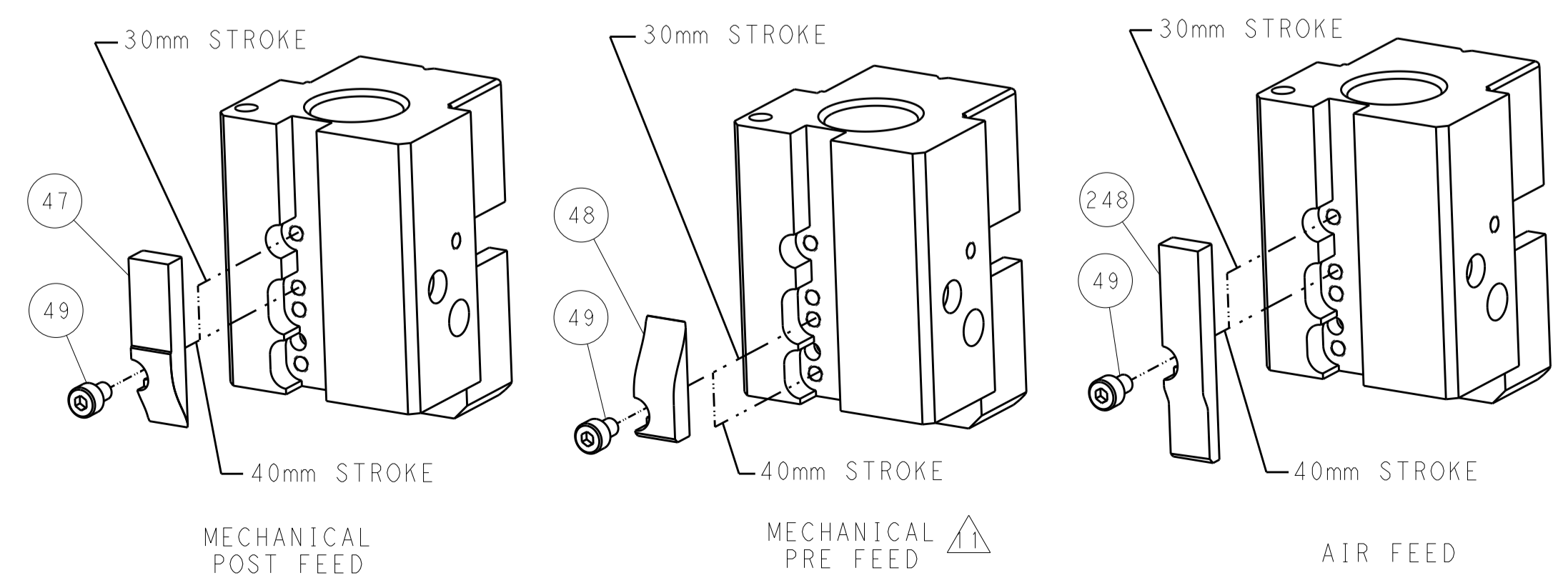
PNEUMATIC



SERVO
LATCH PLATE

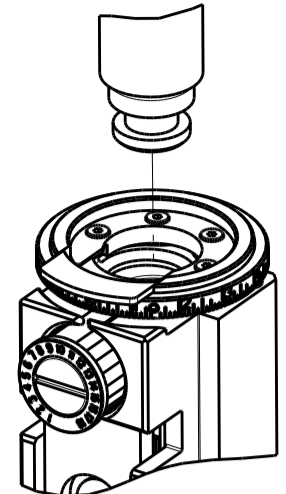


CAM POSITIONS



ATLANTIC VERSION
 Shown on sheets 1 of 4 & 2 of 4
 (Pacific version shown on sheets 3 of 4 & 4 of 4)

| | | | | | | | |
|-------------|--|--|--|------------------------|--|--|--|
| DIMENSIONS: | | TOLERANCES UNLESS OTHERWISE SPECIFIED: | | DWG: X_ZHAO 28FEB2012 | | TE Connectivity | |
| mm | | 0 PLC ±0.5 | | CHK: T_ELBIN 28FEB2012 | | Harrisburg, PA 17105-3608 | |
| Ø | | 1 PLC ±0.13 | | APPV: S_XI 28FEB2012 | | NAME: Ocean End Feed Applicator | |
| H | | 3 PLC ±0.013 | | PRODUCT SPEC: | | SIZE: CAGE CODE DRAWING NO. RESTRICTED TO | |
| ANGLES | | 4 PLC ±0.0001 | | APPLICATION SPEC: | | A11 00779 ©=2150185 | |
| FINISH: | | 5 PLC ±0.0001 | | WEIGHT: | | Customer Accessible Production Drawing SCALE: 1:1 SHEET 2 OF 4 REV: B1 | |

| PACIFIC VERSION TERMINATOR INTERFACE ADAPTER | PART NUMBER | REVISION | DESCRIPTION | FEED TYPE | APPLICATOR STYLE CONVERSION CHART | | | | | | |
|--|-------------|----------|--------------------------|-------------------|-----------------------------------|-----------------------|-----------|-------------|-----------|------------------------|-----------|
| | | | | | CONVERT TO | PART NUMBERS REQUIRED | | | | | |
|  | 2-2150185-1 | A | FINE CRIMP HEIGHT ADJUST | MECHANICAL | PNEUMATIC FEED | 2119950-1 | 2119792-1 | - | 2119641-2 | - | 2063440-1 |
| | | | | | SERVO LATCH PLATE | 2119951-1 | 1901697-1 | 8-2150185-5 | - | 2168400-7 (QUANTITY 2) | |
| | | | | | SMART APPLICATOR | 2161326-1 | - | 8-2150185-4 | - | - | |
| | 2-2150185-2 | B | FINE CRIMP HEIGHT ADJUST | PNEUMATIC | MECHANICAL FEED | 2119949-1 | 2063961-1 | 5-18022-5 | 2119653-2 | - | - |
| | | | | | SERVO LATCH PLATE | 2119951-1 | 1901697-1 | 8-2150185-5 | - | 2168400-7 (QUANTITY 2) | |
| | | | | | SMART APPLICATOR | 2161326-1 | - | 8-2150185-4 | - | - | |
| | 2-2150185-5 | A | FINE CRIMP HEIGHT ADJUST | SERVO LATCH PLATE | MECHANICAL FEED | 2119949-1 | 2063961-1 | 5-18022-5 | 2119653-2 | - | - |
| | | | | | PNEUMATIC FEED | 2119950-1 | 2119792-1 | - | 2119641-2 | - | 2063440-1 |
| | 2-2150185-7 | A | FINE CRIMP HEIGHT ADJUST | NONE | - | - | - | - | - | - | - |
| | 7-2150185-7 | A | CRIMP TOOLING KIT | - | - | - | - | - | - | - | - |

| APPLICATOR DATA | | |
|-----------------------------------|------|--|
| CRIMP SIZE | TYPE | |
| WIRE 3.56 mm [1.40] | F | |
| INSUL 6.10 mm [2.40] | F | |
| APPLICATOR INSTRUCTIONS 408-10390 | | |

| TERMINAL DATA: TE TERMINAL | | TE CRIMP SPECIFICATION | |
|---|-------------|--|-------------|
| TERMINAL NAME: RECEPTACLE, POSITIVE-LOCK, .250 SERIES | | | |
| WIRE STRIP LENGTH 4.40-6.20 mm [1.73-.244 IN] | | INSULATION DIAMETER RANGE Ø3.05-4.31 mm [1.120-.170 IN] | |
| TERMINAL APPLICATION SPECIFICATION | 114-2074 | - | - |
| TERMINALS APPLIED | | | |
| TE TERMINAL | TE TERMINAL | TE TERMINAL | TE TERMINAL |
| 1217095-1 | 1217095-2 | 1217092-1 | 1217092-2 |

| WIRE SIZE | CRIMP HEIGHT mm [INCH] | CRIMP HEIGHT REFERENCE SETTING |
|----------------------|-----------------------------|--------------------------------|
| (2)16AWG | 1.78+/-0.05 [0.070+/-0.002] | 8.4 |
| 1)16 AWG + (1)18 AWG | 1.70+/-0.05 [0.067+/-0.002] | 9.4 |
| (2)18 AWG | 1.60+/-0.05 [0.063+/-0.002] | 10.5 |
| 16 AWG | 1.50+/-0.05 [0.059+/-0.002] | 11.2 |

- RECOMMENDED SPARE PARTS
- GREASE BEARING SURFACES LIGHTLY
- LUBRICATE DAILY PER THE APPLICATOR INSTRUCTION SHEET SUPPLIED WITH THE APPLICATOR.
- APPLICATOR SPECIFIC DATA TO BE ENTERED INTO BLANK MEMORY CHIP AT ASSEMBLY. SEE BELOW FOR PART NUMBER:
 MECHANICAL FEED WITH "SMART APPLICATOR" CONVERSION: 8-2150185-4
 PNEUMATIC FEED WITH "SMART APPLICATOR" CONVERSION: 8-2150185-4
 SERVO FEED WITH "FINE CRIMP HEIGHT ADJUST": 8-2150185-5
- ADJUSTMENT OF THE STRIPPER MAY BE REQUIRED WHEN MOVING THE APPLICATOR BETWEEN BENCH AND LEADMAKER APPLICATIONS.
- APPLY PART NUMBER 1-23419-5 LOCTITE TO THREADS OF ITEMS 50, 62. APPLY PART NUMBER 2-23419-6 LOCTITE TO THREADS OF ITEMS 242.
- GREASE THREADS, GROOVE AND O-RING ON ITEMS 139 & 153.
- MAGNET, ITEM 166 MUST BE ORIENTED CORRECTLY IN ORDER TO PROPERLY ACTUATE THE COUNTER.
- CRIMP HEIGHT REFERENCE SETTING WAS THE SETTING USED WHEN THE APPLICATOR WAS QUALIFIED AT THE FACTORY. ADJUSTMENT MAY BE NECESSARY WHEN RUNNING APPLICATOR IN THE FIELD.
- SPARE FEED CAM STORAGE LOCATION REFER TO INSTRUCTION SHEET FOR ADDITIONAL INFORMATION.
- THE RECOMMENDED SET-UP FOR END FEED APPLICATORS IS POST-FEED WITH ITEM 2119653-1. THE APPLICATOR CAN BE CONFIGURED FOR PRE-FEED WITH ITEM 2119652-1 BUT MAY ENCOUNTER PROBLEMS WITH SOME APPLICATIONS. FEED ISSUES OR TERMINAL JAMMING MAY OCCUR IN THE PRE-FEED CONFIGURATION.

***WARNING**
 ON INSTALLATION, SET WIRE DISC, ITEM 40 TO LARGEST WIRE SIZE SETTING. USE OF SETTINGS BELOW MINIMUM REQUIRED CRIMP HEIGHT SETTING WILL CAUSE DAMAGE TO CRIMP TOOLING.

| -77-27-25-22-21 | PART NO | DESCRIPTION | ITEM NO |
|-----------------|-----------|-------------------------------------|---------|
| - 1 1 1 1 1 | 2119782-1 | FINE ADJUST HEAD ASM, PACIFIC STYLE | 251 |
| - - - 1 - | 2119640-1 | PUSH ROD, AIR FEED | 250 |
| - - - 1 - | 2079988-1 | BUSHING, LCH5-12, MISUMI | 249 |
| - 1 1 1 1 1 | 1-22279-3 | SPRING, COMPRESSION | 246 |
| - 1 1 1 1 1 | 2119082-9 | CAM, SNAIL, INSULATION ADJUSTMENT | 244 |
| - 1 1 1 1 1 | 2079764-1 | WASHER, WAVE SPRING, CREST-TO-CREST | 243 |

PACIFIC VERSION
 Shown on sheets 3 of 4 & 4 of 4
 (Atlantic version shown on sheets 1 of 4 & 2 of 4)

| SET UP GAUGE | LOC | DIST | REVISIONS | | | |
|--------------|-----|------|-----------|-------------|----|------|
| 2119599-2 | A | 66 | REV | DATE | BY | APPV |
| | | | - | SEE SHEET 1 | - | - |

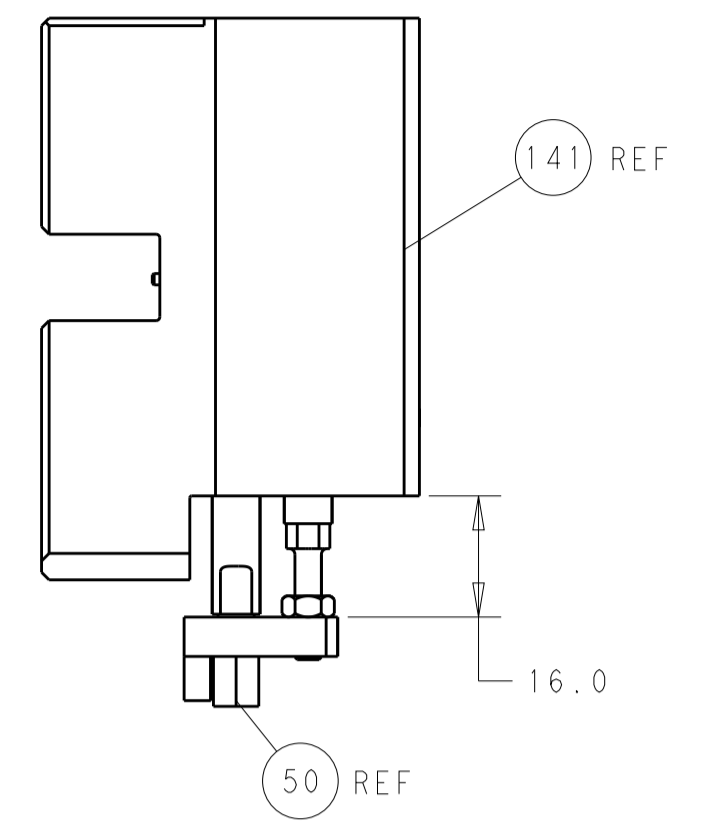
| | | | |
|----------------|-------------|-------------------------------------|-----|
| - 1 1 1 1 1 | 2119083-1 | RETAINER, INSULATION DIAL | 242 |
| - - 2 - - | 2168400-7 | SHCS, LOW HEAD, RoHS, M5 X 10 | 240 |
| - - - 1 - | 2119580-1 | MECHANICAL FEED ASSEMBLY | 239 |
| - - - 1 - | 2063440-1 | AIR FEED MODULE | 238 |
| - - 1 - - | 2119740-2 | TAG, IDENTIFICATION | 213 |
| - 4 4 4 4 | 2079383-9 | SCR, BHSC, RoHS (M6 X 20) | 186 |
| - - REF - - | 1901697-1 | FEED FINGER ASSEMBLY, EF | 183 |
| - 1 1 1 1 | 6-993111-6 | PIN, SLOTTED SPRING 3.0 X 14.0 | 177 |
| - 1 1 1 1 | 8-22280-7 | SPRING, COMPRESSION | 176 |
| - 1 1 1 1 | 1752353-2 | GUIDE PIN, HOLDDOWN | 175 |
| - 1 1 1 1 | 1901680-2 | GUIDE PIN, HOLDDOWN | 174 |
| - - - 2 - | 21045-3 | RING, RETAIN, EXTERN, 3/16 CRESCENT | 172 |
| - 1 1 1 1 | 994969-1 | MAGNET, RARE EARTH HIGH ENERGY | 166 |
| - REFREFREFREF | 994970-2 | COUNTER, MAGNETIC | 164 |
| - - - 1 - | 240638-1 | SPRING, FEED FINGER | 163 |
| - 1 1 1 1 | 8-21084-1 | O-RING, .801 ID, .070 DIA. MAT. | 153 |
| - - - 1 - | 2119641-2 | FEED CAM, AIR FEED | 152 |
| - 1 1 1 1 | 2119798-2 | DETENT PIN | 145 |
| - 1 1 1 1 | 2079383-8 | SCR, BHSC, RoHS (M4 X 16) | 144 |
| - - - - 1 | 2119653-2 | FEED CAM, POST FEED | 142 |
| - 1 1 1 1 | 2119655-6 | APPLICATOR BASIC ASSEMBLY, EF | 141 |
| - 1 1 1 1 | 2119651-1 | RAM, ASIAN STYLE, END FEED | 140 |
| - 1 1 1 1 | 2119092-2 | BOLT, ADJUSTMENT | 139 |
| - - - 1 - | 3-23627-7 | PIN, RETAIN, GRVD, 3/16 X .854 | 137 |
| - - REF - - | SEE NOTE 4 | MEMORY CHIP, PROGRAMMED | 135 |
| - - 1 - - | 1633743-1 | SERVO FEED LATCH ASM | 133 |
| - 1 1 1 1 | 455888-5 | SPACER, CRIMPER | 82 |
| - 1 1 1 1 | 2119956-2 | DOCUMENTATION PACKAGE | 71 |
| - 2 2 2 2 | 2-18032-2 | SCR, SET, FLT POINT M3 X 10.0 | 70 |
| - 1 2 - 1 1 | 2119740-1 | TAG, IDENTIFICATION | 67 |
| - 2 2 2 2 | 2168078-1 | SCREW, DRIVE, RH, RoHS, 2 x .188 | 66 |
| - 1 1 1 1 | 1901681-5 | HOLDDOWN, TERMINAL | 65 |
| - 2 2 2 2 | 2168400-5 | SHCS, LOW HEAD, RoHS, M4 X 20 | 64 |
| - 1 1 1 1 | 2119793-1 | LIMITER, ADJUSTMENT BOLT | 63 |
| - 3 3 3 3 | 992763-5 | SCR, SET, SOC, CONE POINT, M3 x 4.0 | 62 |
| - - - - 1 | 5-18022-5 | SCR, HEX HD CAP, M4 X 6.0 | 59 |
| - - - - 1 | 2063961-1 | FEED FINGER | 58 |
| - 3 3 3 3 | 2168400-4 | SHCS, LOW HEAD, RoHS, M4 X 8 | 57 |
| - 2 2 2 2 | 2168083-8 | SCR, SKT HD CAP, RoHS, M4 X 16 | 56 |
| - 2 2 2 2 | 5018030-2 | NUT, HEX, REG, RoHS, M4 | 55 |
| - 2 2 2 2 | 5018030-1 | NUT, HEX, REG, RoHS, M3 | 54 |
| - 2 2 2 2 | 986965-8 | NUT, LOCK, HEX, TORQUE (M4) | 53 |
| - 1 1 1 1 | 1-5018030-0 | NUT, HEX, REG, RoHS, M3.5 | 52 |
| - - - 1 - | 2119792-2 | PAWL, EF, AIR | 51 |
| - 1 1 1 1 | 1-1752354-1 | STANDOFF, HOLD-DOWN | 50 |
| - - - 1 2 | 18023-9 | SCR, SKT HD CAP M4 X 6.0 | 49 |
| - - - - 1 | 2119652-1 | FEED CAM, PRE FEED | 48 |
| - 1 1 1 1 | 2079383-7 | SCR, BHSC, RoHS (M8 X 25) | 41 |
| - 1 1 1 1 | 2119645-1 | DISC, NUMBERED FA WIRE ADJUSTMENT | 40 |
| - 1 1 1 1 | 2119957-1 | APPLICATOR SHIM PACK | 39 |
| - 1 1 1 1 | 2119644-2 | RAM WASHER, PRECISION | 38 |
| - 7 7 7 7 | 1-18028-2 | WASHER, FLAT, REG M4 | 33 |
| - 2 2 2 2 | 2168083-9 | SCR, SKT HD CAP, RoHS, M4 X 20 | 31 |
| - 2 2 2 2 | 1-2168083-0 | SCR, SKT HD CAP, RoHS, M4 X 10 | 29 |
| - 1 1 1 1 | 240639-1 | STRIPPER (MACHINING) | 27 |
| - 2 2 2 2 | 1320906-1 | STUD, THREADED | 25 |
| - 1 1 1 1 | 1752371-1 | PLATE, STRIP GUIDE | 24 |
| - 1 1 1 1 | 240825-2 | PLATE, STRIP HOLD DOWN | 23 |
| - 2 2 2 2 | 22281-9 | SPRING, COMPRESSION | 22 |
| - 1 1 1 1 | 1752373-1 | DRAG | 20 |
| - 2 2 2 2 | 1-1901259-0 | GUIDE, LOWER STRIP | 18 |
| - 1 1 1 1 | 8-240641-4 | SPACER | 16 |
| - 1 1 1 1 | 1752360-1 | SPACER, HOLD-DOWN | 13 |
| - 1 1 1 1 | 240644-1 | PLATE, REAR SHEAR | 11 |
| - - - - - | - | - | 10 |
| - 1 1 1 1 | 690482-4 | PLATE, FRONT SHEAR | 9 |
| 1 1 1 1 1 | 3-1633383-9 | ANVIL, COMBINATION | 8 |
| - 1 1 1 1 | 690474-4 | BLADE, SLUG | 7 |
| - 1 1 1 1 | 240641-3 | SPACER | 5 |
| - 1 1 1 1 | 238009-3 | BLOCK, FL CRIMPER SPACER | 4 |
| 1 1 1 1 1 | 4-2119582-3 | CRIMPER, INSULATION F PREMIUM | 3 |
| - 1 1 1 1 | 455888-1 | SPACER, CRIMPER | 2 |
| 1 1 1 1 1 | 1-456411-5 | CRIMPER, WIRE PREMIUM | 1 |

| DIMENSIONS: | | TOLERANCES UNLESS OTHERWISE SPECIFIED: | | DRAWN | | CHK | | APPROV | | DATE | |
|-------------|-----------|--|-----------|---------------|-----------|---------------|--------|-----------|----------|-----------|-----------|
| mm | 0 PLC ±.5 | 1 PLC ±.5 | 2 PLC ±.5 | 3 PLC ±.5 | 4 PLC ±.5 | ANGLES ±.0001 | FINISH | X. ZHAO | T. ELBIN | 28FEB2012 | 28FEB2012 |
| MATERIAL: | | | | PRODUCT SPEC: | | | | NAME: | | | |
| - | | | | - | | | | S. XI | | | |
| - | | | | - | | | | 28FEB2012 | | | |
| - | | | | - | | | | - | | | |
| - | | | | - | | | | - | | | |
| - | | | | - | | | | - | | | |
| - | | | | - | | | | - | | | |
| - | | | | - | | | | - | | | |
| - | | | | - | | | | - | | | |
| - | | | | - | | | | - | | | |
| - | | | | - | | | | - | | | |

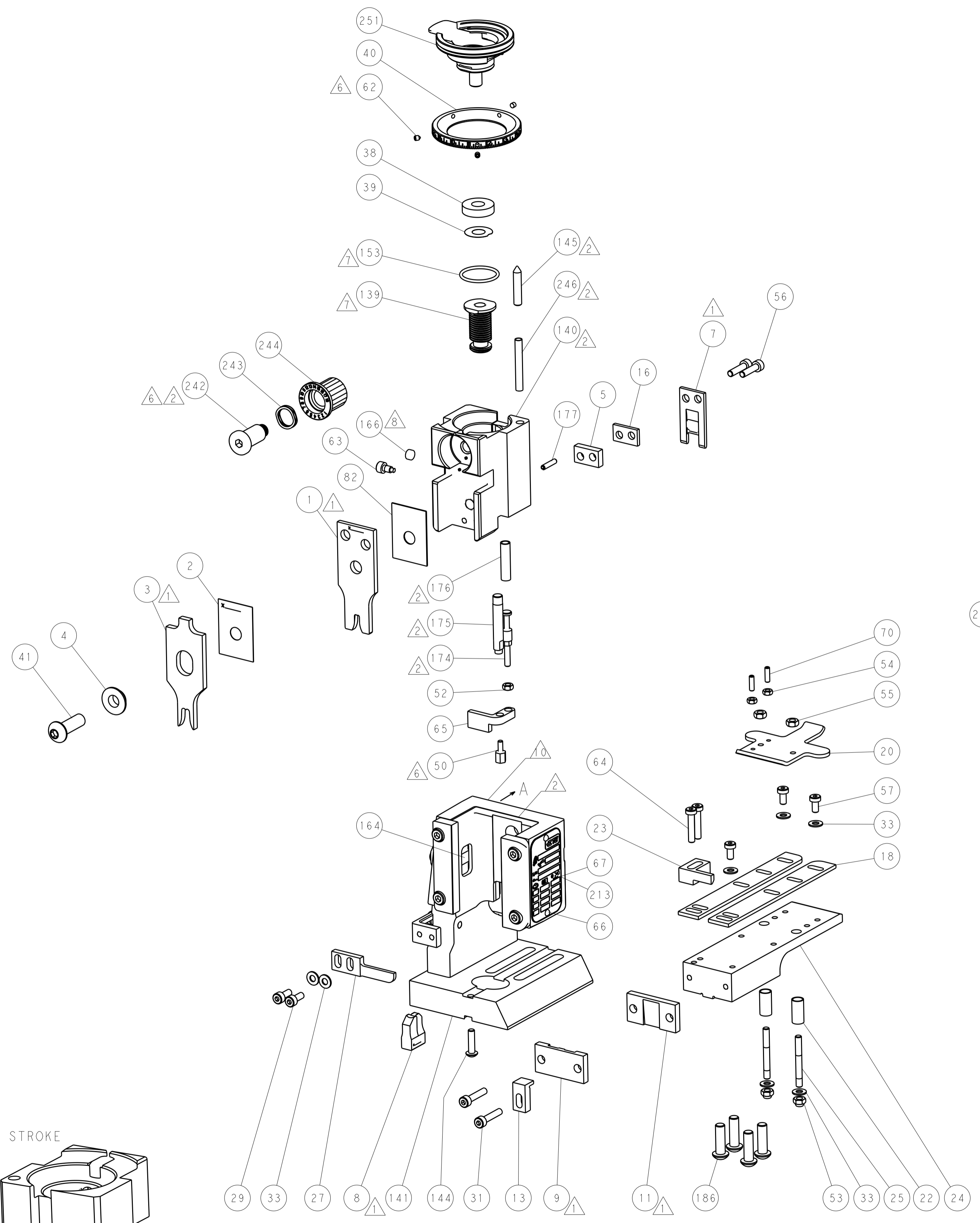
Ocean End Feed Applicator

Customer Accessible Production Drawing SCALE 1:1 SHEET 3 OF 4 REV B1

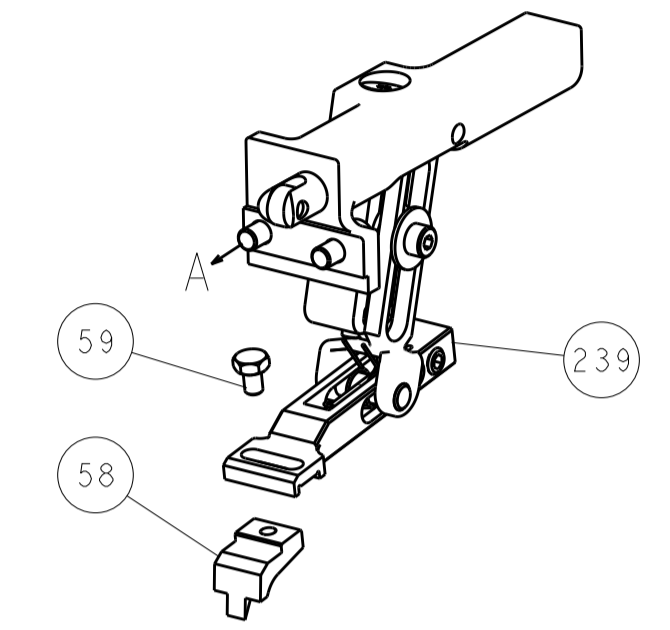
| LOC | | DIST | | REVISIONS | | | |
|-----|----|------|-----|-------------|------|-----|------|
| A | 66 | P | LTM | DESCRIPTION | DATE | OWN | APVD |
| | | - | - | SEE SHEET 1 | - | - | - |



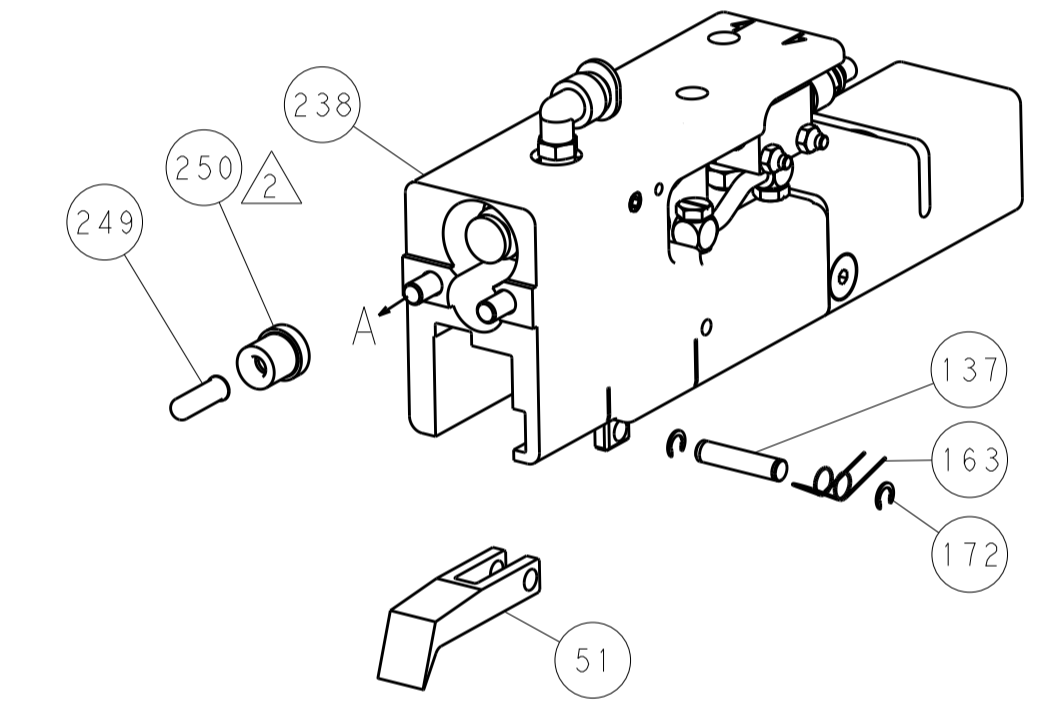
HOLDDOWN SET-UP



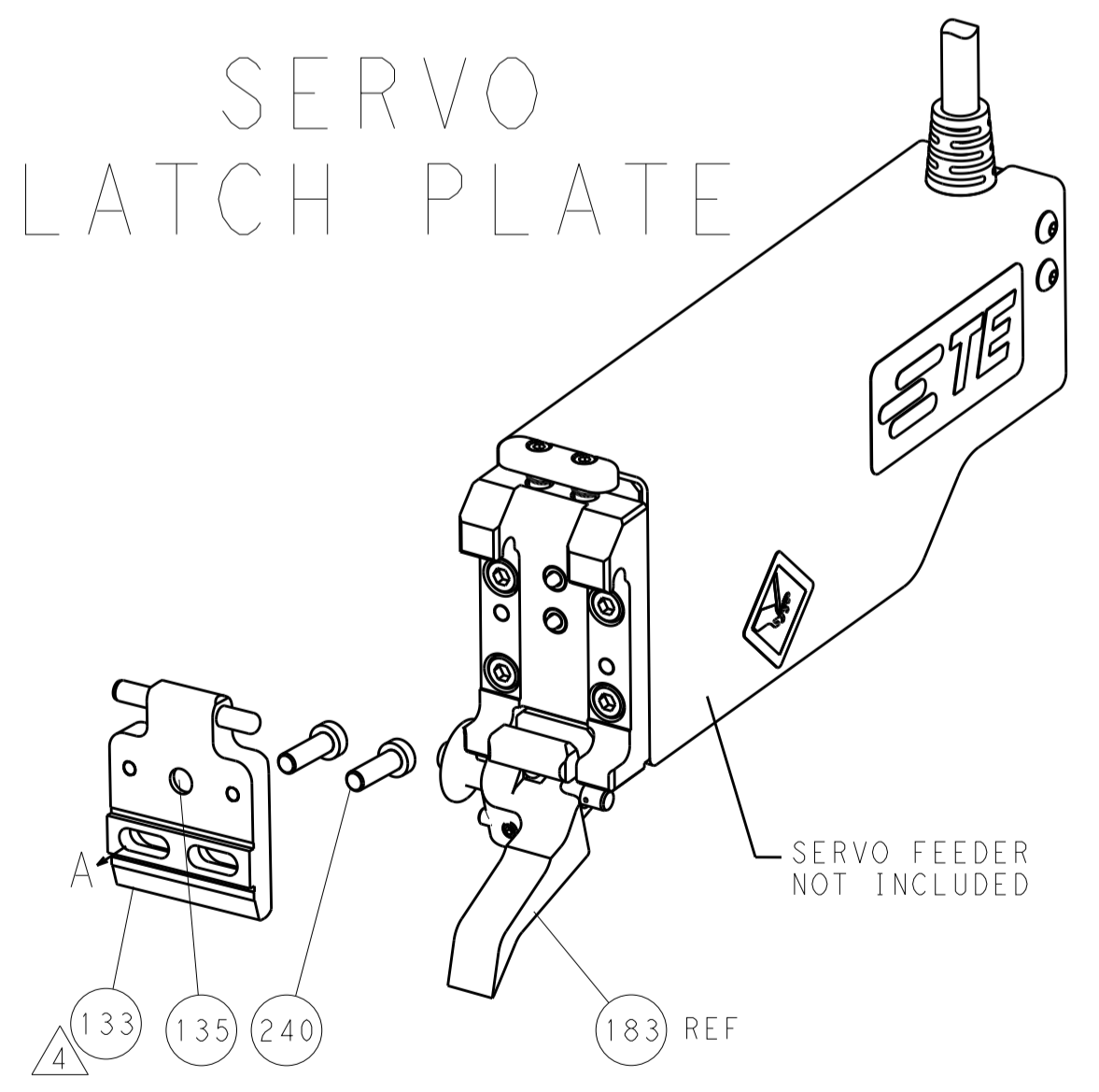
FEED TYPE
MECHANICAL



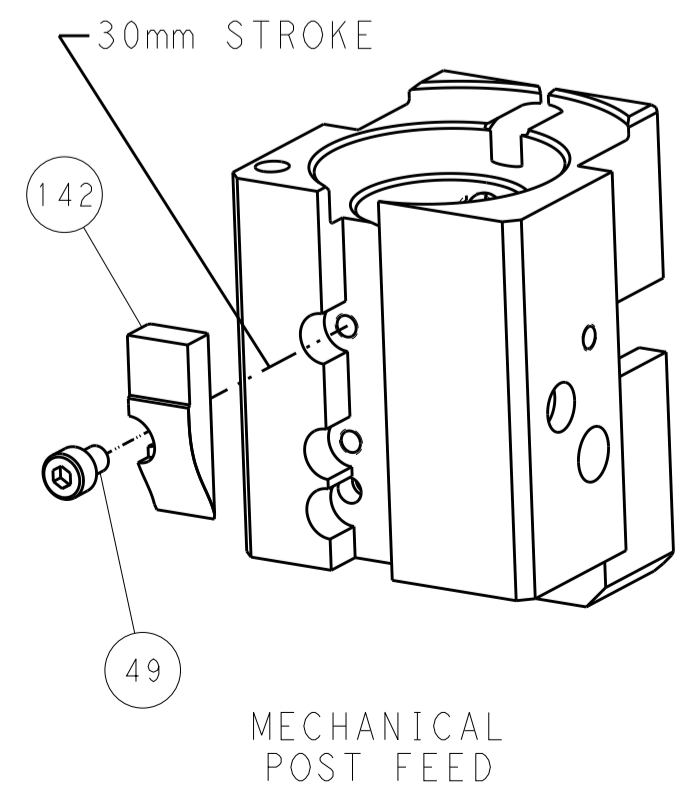
PNEUMATIC



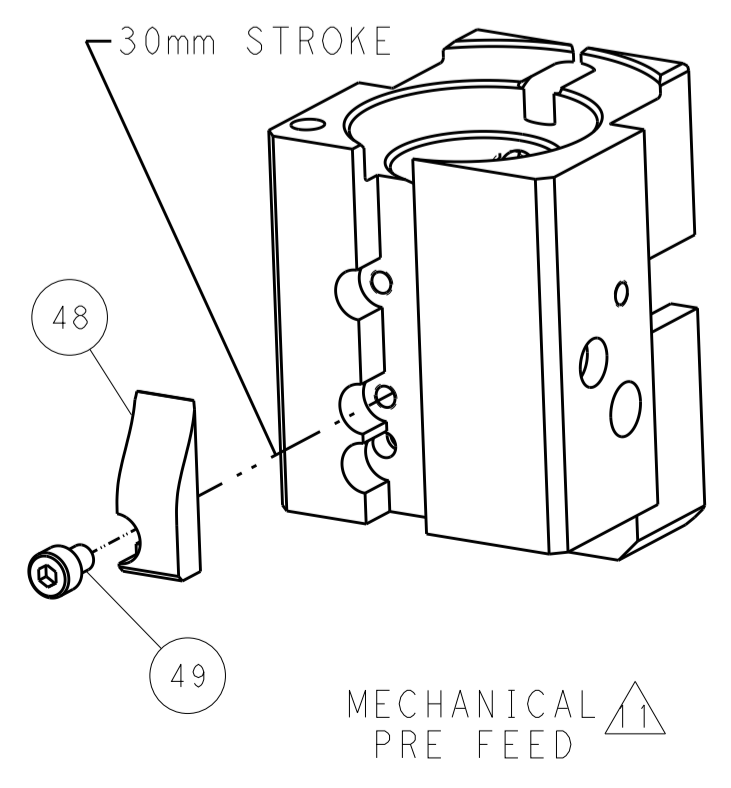
SERVO
LATCH PLATE



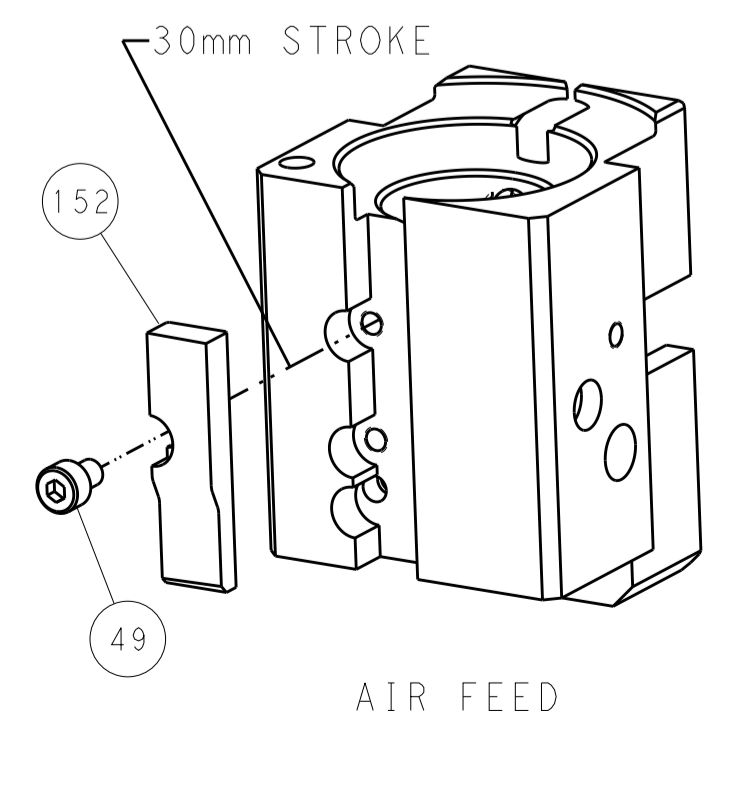
CAM POSITIONS



MECHANICAL
POST FEED



MECHANICAL
PRE FEED



AIR FEED

PACIFIC VERSION
 Shown on sheets 3 of 4 & 4 of 4
 (Atlantic version shown on sheets 1 of 4 & 2 of 4)

| | | | | | | | |
|-------------|---------------|--|-------------|------------------------|------------------|-----------------|---------------------------|
| DIMENSIONS: | | TOLERANCES UNLESS OTHERWISE SPECIFIED: | | DWN X ZHAO 28FEB2012 | | TE Connectivity | |
| mm | 0 PLC ±0.5 | 1 PLC ±0.5 | 2 PLC ±0.13 | 3 PLC ±0.13 | 4 PLC ±0.013 | 5 PLC ±0.001 | Harrisburg, PA 17105-3608 |
| | ANGLES ±0.001 | | | CHK T. ELBIN 28FEB2012 | NAME | | |
| MATERIAL: | | FINISH: | | APVD S. XI 28FEB2012 | PRODUCT SPEC | | |
| | | | | | APPLICATION SPEC | | |
| | | | | | WEIGHT | | |
| | | | | | SCALE | | 1:1 |
| | | | | | SHEET | | 4 of 4 |
| | | | | | REV | | B1 |