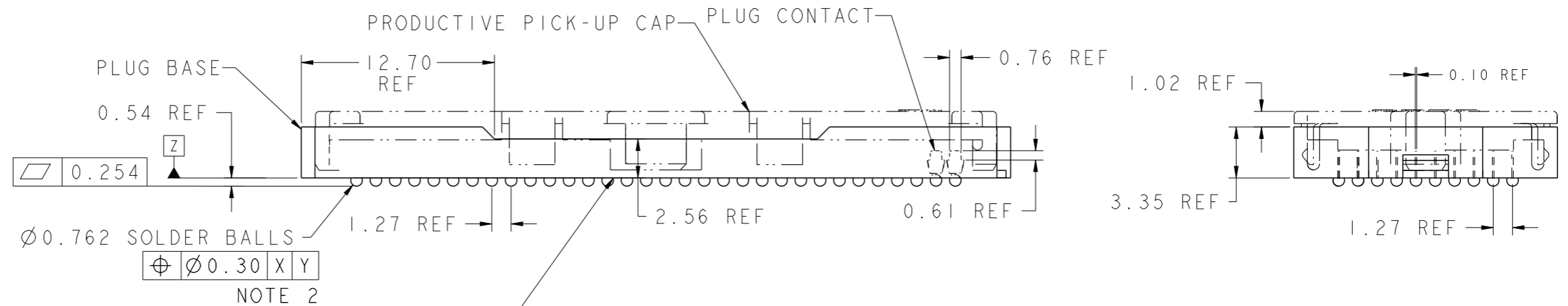
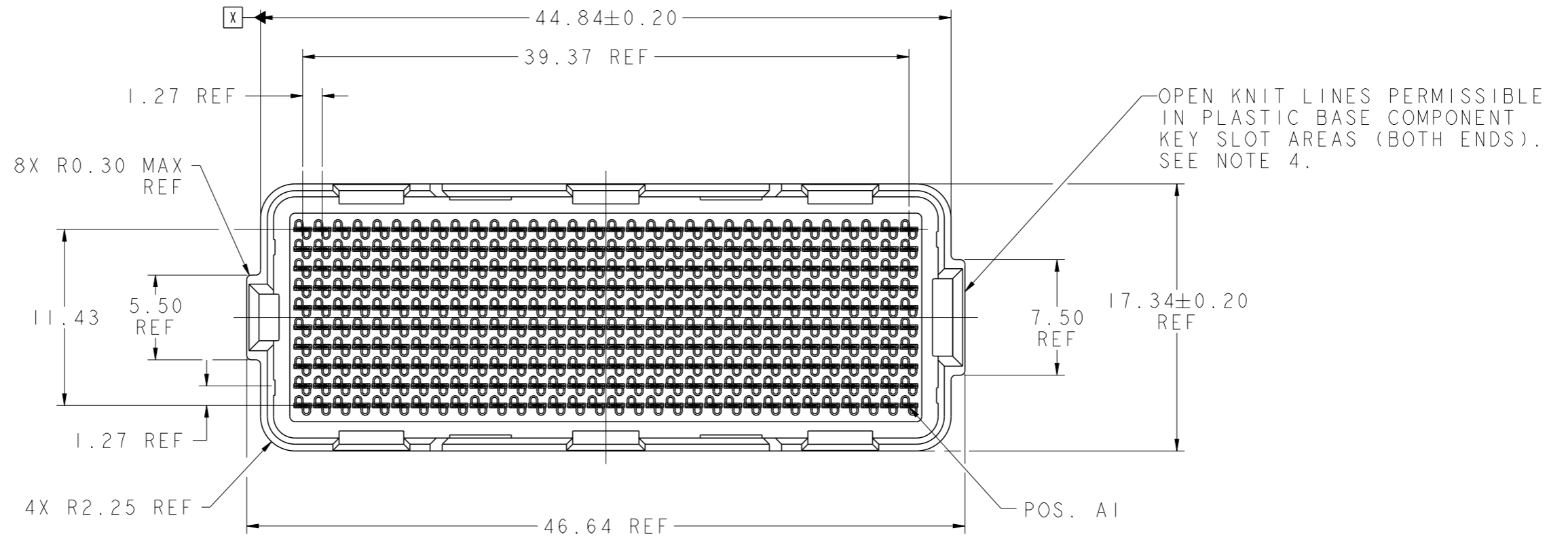


PRODUCT NUMBER

10122849-092LF



CONTINUOUS OPEN KNIT LINE CRACKS (TRAVERSING THE ENTIRE BODY LENGTH OF THE CONNECTOR) WHICH CAUSE CRITICAL-TO-FUNCTION DIMENSIONAL CHANGES THAT AFFECT THE CONNECTORS MECHANICAL ALIGNMENT FEATURES ARE NOT PERMISSIBLE. SEE NOTE 4.

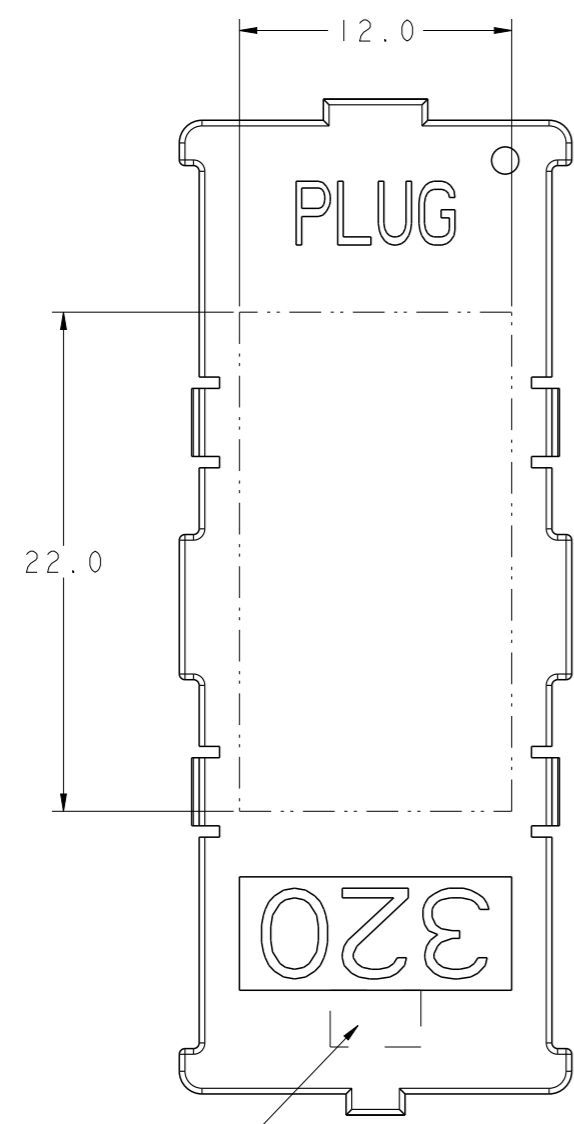
spec ref	-	dr	S Paulpandian	2012/09/26	projection	mm	size	A3	scale	3:1
tolerance std	ASME Y14.5	eng	Dave Horchler	2015/01/05			ecn no	REL-19891-1	rel level	Released
TOLERANCES UNLESS OTHERWISE SPECIFIED		chr	-	apppr						
surface	✓	linear	0.X	±0.3		0mm PLUG ASSEMBLY 10 x 32 = 320 POSITIONS	dwg no	10122849	rev	E
			0.XX	±0.13						
			0.XXX	±0.051						
ASME Y14.5	angular	0°	±0°		www.fci.com	cat. no.	Product - Customer Drw		sheet 1 of 5	



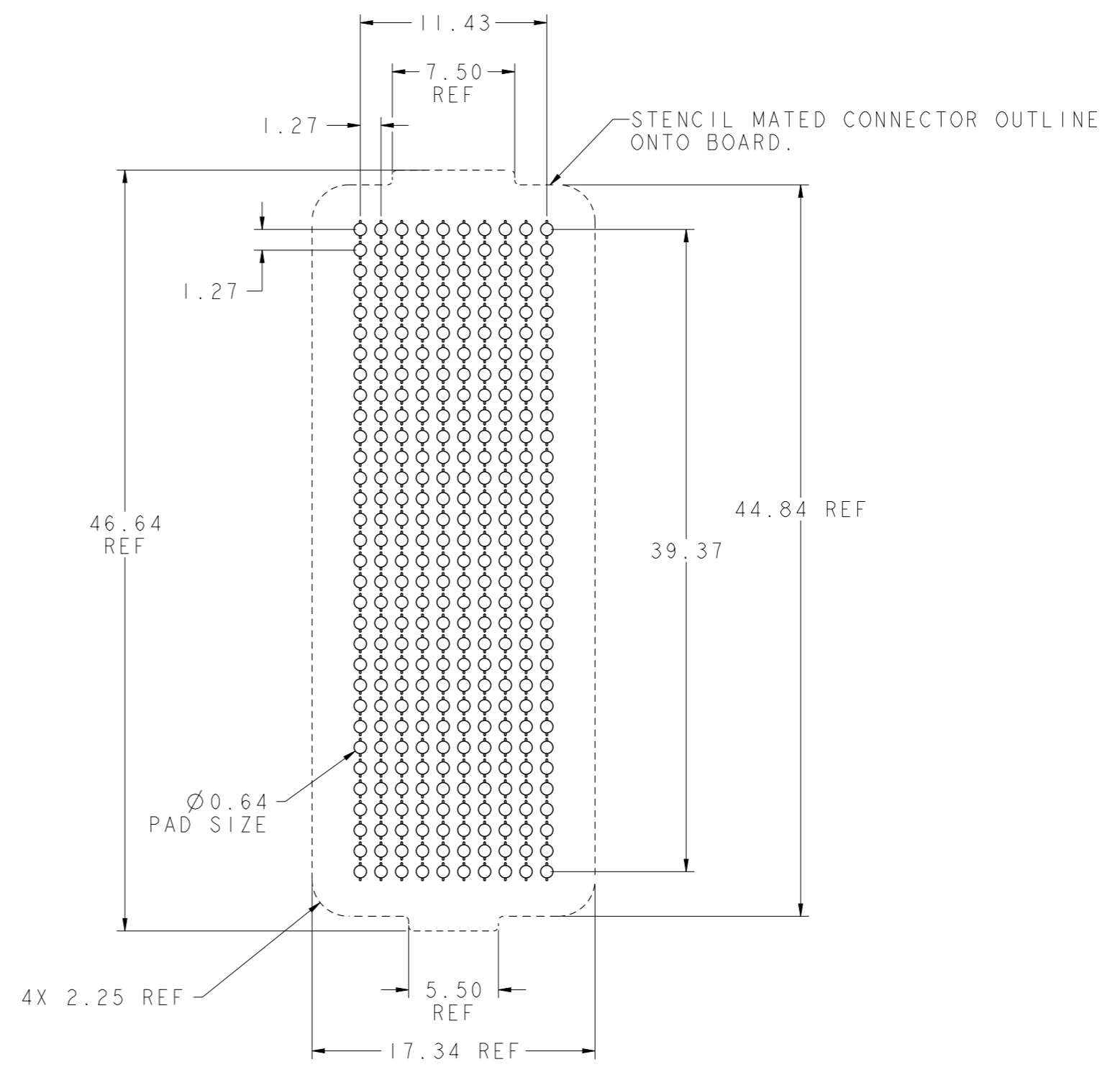
Copyright FCI.

PRODUCT NUMBER

10122849-092LF



NOTE 6
FLAT AREA FOR PICK-UP CAP



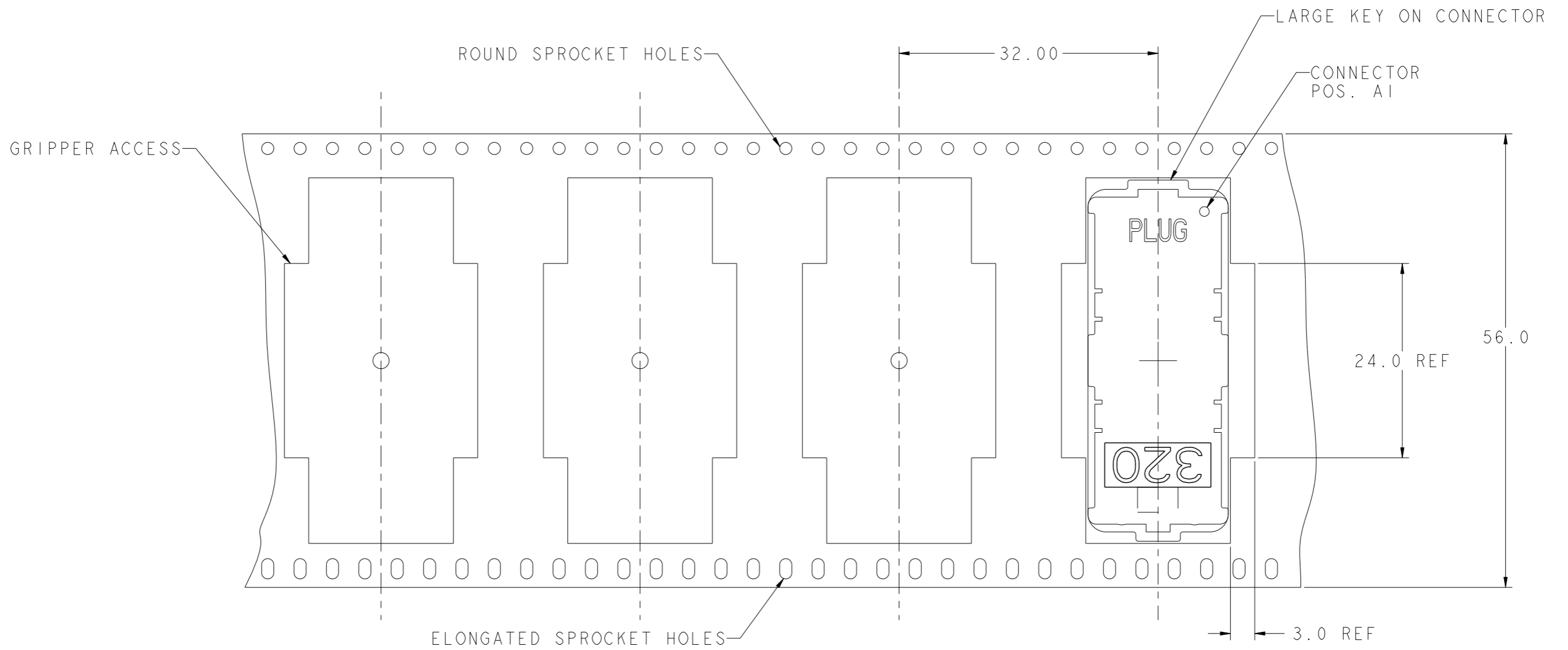
BOARD PATTERN

spec ref	-	dr	S Paulpandian	2012/09/26	projection	mm	size	A3	scale	3:1
tolerance std	ASME Y14.5	eng	Dave Horchler	2015/01/05			ecn no	ELX-V-19891-1	rel level	Released
TOLERANCES UNLESS OTHERWISE SPECIFIED		chr	-	apppr						
surface	<input checked="" type="checkbox"/> linear <input type="checkbox"/> angular	0.X ±0.3 0.XX ±0.13 0.XXX ±0.051 ASME Y14.5 angular 0° ±0°			0mm PLUG ASSEMBLY 10 x 32 = 320 POSITIONS		cat. no.	Product - Customer Drw	sheet 2 of 5	
							www.fci.com	cat. no.	Product - Customer Drw	sheet 2 of 5

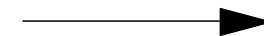


Copyright FCI.

PRODUCT NUMBER
10122849-092LF



DIE - REEL DIRECTION



TAPE & REEL PACKAGING
PER EIA 481 - 3
SCALE NONE

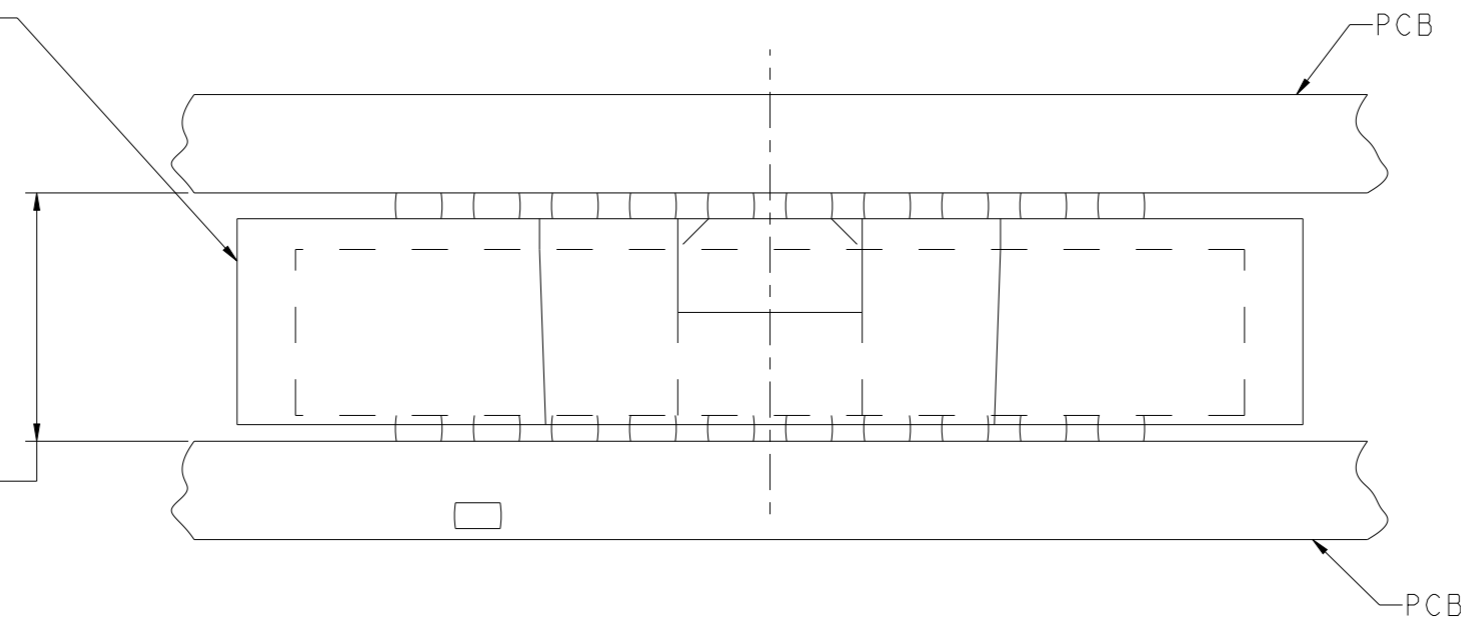
spec ref -		dr S Paulpandian	2012/09/26	projection	mm	size A3	scale 3:1
tolerance std ASME Y14.5	TOLERANCES UNLESS OTHERWISE SPECIFIED	eng Dave Horchler	2015/01/05		mm	ecn no ELX-V-19891-1	
		chr -	-			rel level Released	
surface ✓		linear	appr R Marshall	2015/01/05	product family MEG-ARRAY		dwg no 10122849
ASME Y14.5	angular	www.fci.com		cat. no.		Product - Customer Drw	
	0.X ±0.3	0mm PLUG ASSEMBLY		10 x 32 = 320 POSITIONS		sheet 3 of 5	
	0.XX ±0.13						
	0.XXX ±0.051						
	0° ±0°						

PRODUCT NUMBER

10122849-092LF

PLUG ASSY
P/N 10122849-002LF

DIM "A" REF
MATED HEIGHT
AFTER REFLOW
SEE NOTE 3



MATED HEIGHT AFTER REFLOW IS BASED ON Ø0.64mm PAD (METAL-DEFINED)
AND 0.13mm SOLDER PASTE STENCIL THICKNESS. SEE NOTE 3

END VIEW - MATED CONNECTORS
SCALE NONE



Copyright FCI.

spec ref -		dr S Paulpandian	2012/09/26	projection	mm	size A3	scale 3:1
tolerance std ASME Y14.5	TOLERANCES UNLESS OTHERWISE SPECIFIED	eng Dave Horchler	2015/01/05		← →	ecn no	ELX-V-19891-1
		chr -	-			product family	MEG-ARRAY
surface ✓	linear	0.X ±0.3		0mm PLUG ASSEMBLY 10 x 32 = 320 POSITIONS		dwg no	10122849
		0.XX ±0.13					
		0.XXX ±0.051					
ASME Y14.5	angular	0° ±0°	www.fci.com	cat. no.	Product - Customer Drw	rev	E

PRODUCT NUMBER
10122849-092LF

NOTES:

1. MATERIAL:
HOUSING: LCP-BLACK
CONTACT: COPPER ALLOY

PLATING:
CONTACT: 15 μ " (0.38 μ m) GXT OVER Ni UNDERPLATE
(GOLD SUBSTITUTION PERMISSABLE)
SOLDER BALL: LEAD FREE 95.5Sn/4Ag/0.5Cu
2. SOLDER BALLS WILL NOT HAVE PERFECT SPHERICAL SHAPES DUE TO REFLOW ATTACHMENT.
3. MATED HEIGHT EFFECTED BY CUSTOMER'S PCB PAD SIZE, PLATING, SOLDER REFLOW PROFILE, & SOLDER PASTE.
4. FOR PROPER APPLICATION FOLLOW FCI APPLICATION SPECIFICATION GS-20-033 LEAD FREE SOLDER BALLS WILL NOT SOLDER PROPERLY IN A LEADED SOLDER PROCESS DUE TO A HIGHER REFLOW TEMPERATURE. LEAD FREE PRODUCT IS THEREFORE NOT BACKWARDS COMPATIBLE WITH LEADED OR SOME SOLDERING APPLICATIONS. REFERENCE FCI APPLICATION SPECIFICATION.
5. THIS PRODUCT MEETS EUROPEAN UNION DIRECTIVES AND OTHER COUNTRY REGULATIONS AS DESCRIBED IN GS-47-0004 PRODUCT MEETING THIS DIRECTIVE IS IDENTIFIED IN THE LOT CODE NUMBER MARKED ON EACH PART BY HAVING AN "X" IN THE SEVENTH CHARACTER POSITION.
6. CURRENT COMPANY LOGO TO BE VISIBLE IN APPROXIMATE AREA SHOWN.
7. SEE PRODUCT SPEC GS-12-100 PER TEST AND PERFORMANCE INFORMATION.



Copyright FCI.

spec ref -		dr	S Paulpandian	2012/09/26	projection	mm	size	A3	scale	3:1
tolerance std	TOLERANCES UNLESS OTHERWISE SPECIFIED	eng	Dave Horchler	2015/01/05			ecn no		ELX-V-19891-1	
ASME Y14.5		chr	-	-			rel level		Released	
surface		linear	appr	R Marshall	2015/01/05	product family	MEG-ARRAY	rev		E
ASME Y14.5	angular	www.fci.com		cat. no.	0mm PLUG ASSEMBLY 10 x 32 = 320 POSITIONS		dwg no	10122849		sheet 5 of 5