

ATLANTIC VERSION TERMINATOR INTERFACE ADAPTER	PART NUMBER	REVISION	DESCRIPTION	FEED TYPE
	2266117-1	C	FINE CRIMP HEIGHT ADJUST	MECHANICAL
	2266117-2	C	FINE CRIMP HEIGHT ADJUST	PNEUMATIC
	2266117-5	C	FINE CRIMP HEIGHT ADJUST	SERVO LATCH PLATE <sup>4</sup>
	2266117-6	C	NON-CRIMP HEIGHT ADJUST	SERVO LATCH PLATE <sup>4</sup> <sup>12</sup>
	2266117-7	C	FINE CRIMP HEIGHT ADJUST	NONE
	7-2266117-7	C	CRIMP TOOLING KIT	-
	7-2266117-8	C	APPLICATOR CONVERSION KIT	-

APPLICATOR STYLE CONVERSION CHART									
CONVERT TO	PART NUMBERS REQUIRED								
PNEUMATIC FEED	2119950-1	1338685-1	5-18022-5	2119641-1	2119799-1	2063440-1			
SERVO LATCH PLATE	2119951-1	-	8-2266117-5	1901094-3	-	2168400-6 (QUANTITY 2)			
SMART APPLICATOR	2161326-1	-	8-2266117-4	-	-	-			
MECHANICAL FEED	2119949-1	1338685-1	5-18022-5	2119653-1	-	-			
SERVO LATCH PLATE	2119951-1	-	8-2266117-5	1901094-3	-	2168400-6 (QUANTITY 2)			
SMART APPLICATOR	2161326-1	-	8-2266117-4	-	-	-			
MECHANICAL FEED	2119949-1	1338685-1	5-18022-5	2119653-1	-	-			
PNEUMATIC FEED	2119950-1	1338685-1	5-18022-5	2119641-1	2119799-1	2063440-1			

APPLICATOR DATA		
CRIMP	SIZE	TYPE
WIRE	1.75 mm [.069]	F
INSUL	2.29 mm [.090]	O

APPLICATOR INSTRUCTIONS 408-10389

APPLICATOR CONVERSION KITS	
PART NUMBER	INSULATION DIAMETER RANGE
7-2266116-8	Ø2.74-3.18mm [.108-.125]
7-2266117-8	Ø2.31-2.72mm [.091-.107]
7-2266118-8	Ø1.91-2.29mm [.075-.090]
7-2266119-8	Ø1.60-2.16mm [.063-.085]
7-2266120-8	Ø1.27-1.57mm [.050-.062]

TERMINAL DATA: DEUTSCH TERMINAL TE CRIMP SPECIFICATION			
TERMINAL NAME: STAMPED CONTACT PIN SIZE 20			
WIRE STRIP LENGTH	INSULATION DIAMETER RANGE		
3.81-5.08 mm [.150-.200 IN]	Ø2.31-2.72 mm [.091-.107 IN]		
TERMINAL APPLICATION SPECIFICATION	114-151003		
TERMINALS APPLIED			
TE TERMINAL	DEUTSCH TERMINAL	TE TERMINAL	DEUTSCH TERMINAL
1572032-1	1060-20-0122	1572032-2	1060-20-0144
1572032-7	1060-20-0177		

TERMINAL DATA: DEUTSCH TERMINAL TE CRIMP SPECIFICATION			
TERMINAL NAME: STAMPED CONTACT SOCKET SIZE 20			
WIRE STRIP LENGTH	INSULATION DIAMETER RANGE		
3.81-5.08 mm [.150-.200 IN]	Ø2.31-2.72 mm [.091-.107 IN]		
TERMINAL APPLICATION SPECIFICATION	114-151003		
TERMINALS APPLIED			
TE TERMINAL	DEUTSCH TERMINAL	TE TERMINAL	DEUTSCH TERMINAL
286680-1	1062-20-0122	286680-2	1062-20-0144
286680-9	1062-20-0177	286680-5	1062-20-0322
286680-6	1062-20-0344	1-286680-0	1062-20-0377

WIRE SIZE	CRIMP HEIGHT mm [INCH]	CRIMP HEIGHT REFERENCE SETTING
1.50mm2	1.47+0.03/-0.05 [.058+.001/-0.002]	3.4
16 AWG	1.27+0.03/-0.05 [.050+.001/-0.002]	5.4
1.00mm2	1.27+0.03/-0.05 [.050+.001/-0.002]	5.4
18 AWG	1.24+0.03/-0.05 [.049+.001/-0.002]	5.7
0.75mm2	1.22+0.03/-0.05 [.048+.001/-0.002]	5.9
0.60mm2	1.07+0.03/-0.05 [.042+.001/-0.002]	7.4
20 AWG	0.99+0.03/-0.05 [.039+.001/-0.002]	8.2
0.50mm2	0.97+0.03/-0.05 [.038+.001/-0.002]	8.4
22 AWG	0.94+0.03/-0.05 [.037+.001/-0.002]	8.7
0.35mm2	0.94+0.03/-0.05 [.037+.001/-0.002]	8.7

- 1 RECOMMENDED SPARE PARTS
- 2 GREASE BEARING SURFACES LIGHTLY
- 3. LUBRICATE DAILY PER THE APPLICATOR INSTRUCTION SHEET SUPPLIED WITH THE APPLICATOR.
- 4 APPLICATOR SPECIFIC DATA TO BE ENTERED INTO BLANK MEMORY CHIP AT ASSEMBLY. SEE BELOW FOR PART NUMBER:  
 MECHANICAL FEED WITH "SMART APPLICATOR" CONVERSION: 8-2266117-4  
 PNEUMATIC FEED WITH "SMART APPLICATOR" CONVERSION: 8-2266117-4  
 SERVO FEED WITH "FINE CRIMP HEIGHT ADJUST": 8-2266117-5  
 SERVO FEED WITH "NON-CRIMP HEIGHT ADJUST": 8-2266117-6
- 5. ADJUSTMENT OF THE STRIPPER MAY BE REQUIRED WHEN MOVING THE APPLICATOR BETWEEN BENCH AND LEADMAKER APPLICATIONS.
- 6 APPLY PART NUMBER 1-23419-5 LOCTITE TO THREADS OF ITEMS 62. APPLY PART NUMBER 2-23419-6 LOCTITE TO THREADS OF ITEMS 242. FOR -6 ONLY APPLY PART NUMBER 1-23419-5 LOCTITE TO THREADS OF ITEM 37.
- 7 GREASE THREADS, GROOVE AND O-RING ON ITEMS 35 & 252.
- 8 MAGNET, ITEM 166 MUST BE ORIENTED CORRECTLY IN ORDER TO PROPERLY ACTUATE THE COUNTER.
- 9 CRIMP HEIGHT REFERENCE SETTING WAS THE SETTING USED WHEN THE APPLICATOR WAS QUALIFIED AT THE FACTORY. ADJUSTMENT MAY BE NECESSARY WHEN RUNNING APPLICATOR IN THE FIELD.
- 10 SPARE FEED CAM STORAGE LOCATION REFER TO INSTRUCTION SHEET FOR ADDITIONAL INFORMATION.
- 11 TO CONVERT THE APPLICATOR TO A NON-CARRIER CUTTING STYLE, REMOVE ITEM 13 AND ATTACH TO THE LOCATION ON THE BACK SIDE OF THE HOUSING. REFER TO INSTRUCTION SHEET FOR ADDITIONAL INFORMATION.
- 12 WHEN ASSEMBLING A NON CRIMP HEIGHT ADJUST APPLICATOR (-6) USE SHIMS FROM ITEM 260 TO ACHIEVE A NOMINAL SHIM HEIGHT OF 4.33.

SEE APPROPRIATE APPLICATOR LOG SHEETS FOR APPLIED TERMINALS, WIRE RANGE AND MEMORY CHIP.  
 TERMINAL LUBRICANT IS RECOMMENDED.

-78	-77	-7	-6	-5	-2	-1	PART NO	DESCRIPTION	ITEM NO
-	-	-	1	-	-	-	2119957-2	APPLICATOR SHIM PACK	260
-	-	1	-	1	1	1	8-21084-0	O-RING, .676 ID, .070 DIA. MAT.	252
-	-	-	-	1	-	-	2119640-1	PUSH ROD, AIR FEED	250
-	-	-	-	-	1	-	2079988-1	BUSHING, LCH5-12, MISUMI	249

ATLANTIC VERSION  
 Shown on sheets 1 of 4 & 2 of 4  
 (Pacific version shown on sheets 3 of 4 & 4 of 4)

SET UP GAUGE	LOC	DIST	REVISIONS			
2119599-1	A	66	REV	DATE	BY	CHK
			B	04FEB2016	KH	GB
			B1	20MAY2016	JH	CT
			B2	07DEC2016	MZ	K2
			C	21MAR2017	KH	JDG

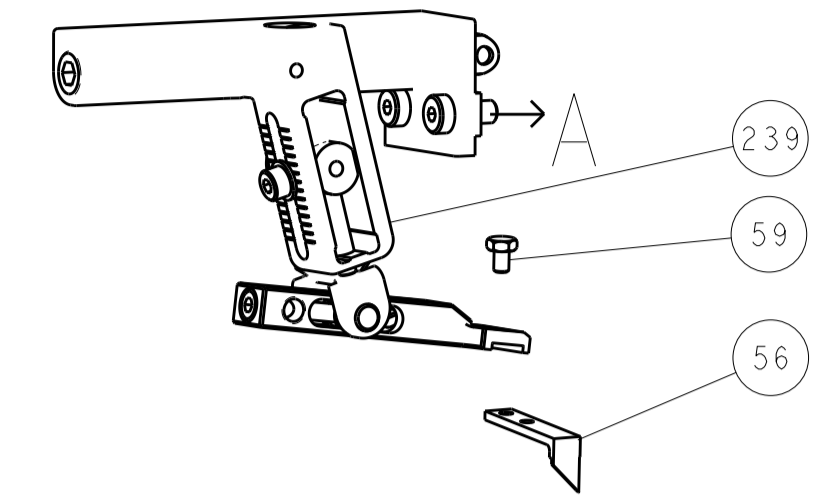
REV	DATE	BY	CHK	DESCRIPTION	ITEM NO	
-	-	-	-	1	2119641-1 FEED CAM, AIR FEED	248
-	-	1	-	1	2119798-1 DETENT PIN	247
-	-	1	-	1	1-22279-3 SPRING, COMPRESSION	246
-	-	-	1	-	2119758-1 RAM, AMP STYLE, SIDE FEED, NON-ADJ.	245
-	-	1	1	1	2119082-9 CAM, SNAIL, INSULATION ADJUSTMENT	244
-	-	1	1	1	2079764-1 WASHER, WAVE SPRING, CREST-TO-CREST	243
-	-	1	1	1	2119083-1 RETAINER, INSULATION DIAL	242
-	-	1	1	1	7-18023-7 SCR, SKT HD CAP M3 X 4.0	241
-	-	-	2	2	2168400-6 SHCS, LOW HEAD, RoHS, M5 X 16	240
-	-	-	-	-	2119580-1 MECHANICAL FEED ASSEMBLY	239
-	-	-	-	1	2063440-1 AIR FEED MODULE	238
-	-	-	1	1	2119740-2 TAG, IDENTIFICATION	213
-	-	-	1	1	1901094-3 SPACER, FEEDER	198
-	-	-	-	2	21045-3 RING, RETAIN, EXTERN, 3/16 CRESCENT	172
-	-	1	1	1	994969-1 MAGNET, RARE EARTH HIGH ENERGY	166
-	-	REF	REF	REF	994970-2 COUNTER, MAGNETIC	164
-	-	-	-	-	240638-1 SPRING, FEED FINGER	163
-	-	-	-	1	3-23627-7 PIN, RETAIN, GRVD, 3/16 X .854	137
-	-	-	-	1	2119799-1 HOLDER, FEED FINGER, AF	136
-	-	-	REF	REF	SEE NOTE 4 MEMORY CHIP, PROGRAMMED	135
-	-	-	1	1	1633743-1 SERVO FEED LATCH ASM	133
-	-	1	1	1	1-18028-2 WASHER, FLAT, REG M4	119
-	-	-	REF	REF	2119944-1 FEED FINGER ASSEMBLY,SF	117
-	-	1	1	1	2119955-1 ASSY, LUBRICATOR, SIDE FEED	113
-	-	1	1	1	455888-7 SPACER, CRIMPER	82
1	-	-	-	-	2266117 PRINT, APPLICATOR LOG SHEET	72
-	-	1	1	1	2119956-1 DOCUMENTATION PACKAGE	71
-	-	1	1	1	2119791-9 DEPRESSOR, WIRE	70
-	-	1	-	-	2119740-1 TAG, IDENTIFICATION	67
-	-	2	2	2	2168078-1 SCREW, DRIVE, RH, RoHS, 2 x .188	66
-	-	1	-	1	2119793-1 LIMITER, ADJUSTMENT BOLT	63
-	-	3	-	3	992763-5 SCR, SET, SOC, CONE POINT, M3 x 4.0	62
-	-	1	1	1	2079383-4 SCR, BHSC, RoHS (M4 X 8)	60
-	-	-	-	1	5-18022-5 SCR, HEX HD CAP, M4 X 6.0	59
-	-	-	-	1	1338685-1 PAWL, FEED	56
-	-	4	4	4	2168400-1 SHCS, LOW HEAD, RoHS, M4 X 12	54
-	-	2	2	2	1-2168083-0 SCR, SKT HD CAP, RoHS, M4 X 10	53
-	-	1	1	1	5018030-1 NUT, HEX, REG, RoHS, M3	52
-	-	1	1	1	811242-5 BUMPER, HOLD DOWN	51
-	-	1	1	1	690753-2 SPACER, TONKER	50
-	-	-	-	1	18023-9 SCR, SKT HD CAP M4 X 6.0	49
-	-	-	-	1	2119652-1 FEED CAM, PRE FEED	48
-	-	-	-	1	2119653-1 FEED CAM, POST FEED	47
-	-	1	1	1	2119656-9 APPLICATOR BASIC ASSEMBLY, SF	46
-	-	1	-	1	2119370-1 RAM, AMP STYLE, SIDE FEED	44
-	-	1	1	1	2079383-7 SCR, BHSC, RoHS (M8 X 25)	41
-	-	1	-	1	2119645-1 DISC, NUMBERED FA WIRE ADJUSTMENT	40
-	-	1	-	1	2119957-1 APPLICATOR SHIM PACK	39
-	-	1	1	1	2119644-1 RAM WASHER, PRECISION	38
-	-	1	1	1	2119085-1 FA HEAD, ATLANTIC STYLE	37
-	-	1	-	1	2119092-1 BOLT, ADJUSTMENT	35
-	-	1	1	1	2-1752356-0 SUPPORT, TERMINAL	34
-	-	2	2	2	2079383-5 SCR, BHSC, RoHS (M4 X 20)	33
-	-	1	1	1	2161328-1 HEX HEAD, FLANGED, M5 x 8mm LONG	32
-	-	1	1	1	1-1320908-0 SPACER, STRIP GUIDE	30
-	-	1	1	1	2119959-1 ASSEMBLY, STRIP GUIDE	29
-	-	1	1	1	1320928-2 STRIP GUIDE	24
-	-	1	1	1	2168083-2 SCR, SKT HD CAP, RoHS, M4 X 8.0	21
-	-	1	1	1	1-18028-2 WASHER, FLAT, REG M4	20
-	-	1	1	1	2119533-1 STRIPPER, SIDE FEED	19
-	-	1	1	1	2119806-1 INSERT, SHEAR	13
-	-	1	1	1	3-22280-3 SPRING, COMPRESSION	12
-	-	1	1	1	1-356885-4 STOP, SHEAR	11
-	-	1	1	1	2119805-1 SHEAR HOLDER, FRONT	10
-	-	1	1	1	1803095-1 FLOATING SHEAR, FRONT	9
1	1	1	1	1	1-1803293-3 ANVIL, COMBINATION DEUTSCH STYLE	8
-	-	-	-	-	-	7
-	-	-	-	-	-	6
-	-	1	1	1	2119757-3 DEPRESSOR, SHEAR	5
-	-	1	1	1	238011-9 BLOCK, CRIMPER SPACER	4
1	1	1	1	1	1803019-5 CRIMPER, INSULATION O	3
-	-	1	1	1	455888-8 SPACER, CRIMPER	2
-	-	1	1	1	1803364-2 CRIMPER, WIRE PREMIUM	1

DIMENSIONS:		TOLERANCES UNLESS OTHERWISE SPECIFIED:		APPLICATOR DATA	
mm	0 PLC	±		0	PLC
	1 PLC	±		1	PLC
	2 PLC	±		2	PLC
	3 PLC	±		3	PLC
	4 PLC	±		4	PLC
	ANGLES	±			ANGLES
	FINISH				FINISH

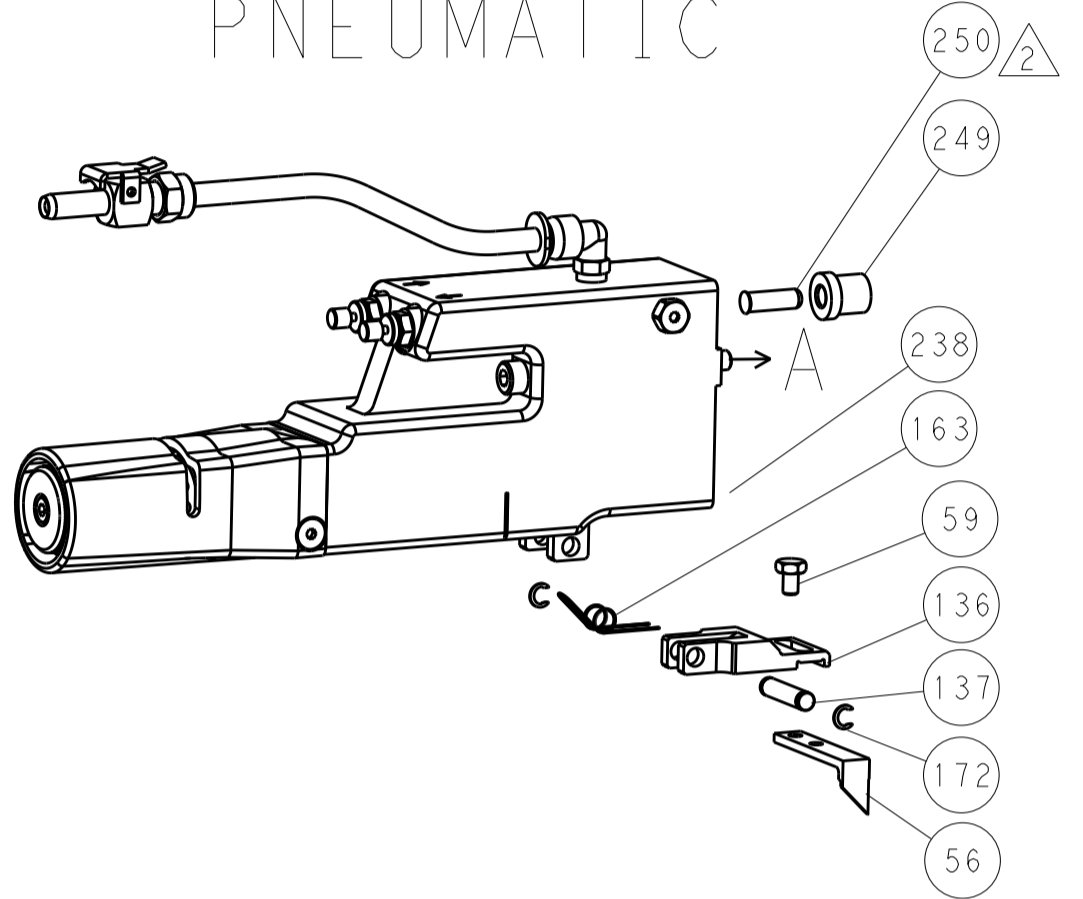
DWG NO: 00779  
 SCALE: 1:2  
 SHEET: 1 OF 4  
 REV: C

LOC		DIST		REVISIONS			
A	66	P	LTN	DESCRIPTION	DATE	OWN	APVD
		-		SEE SHEET 1			

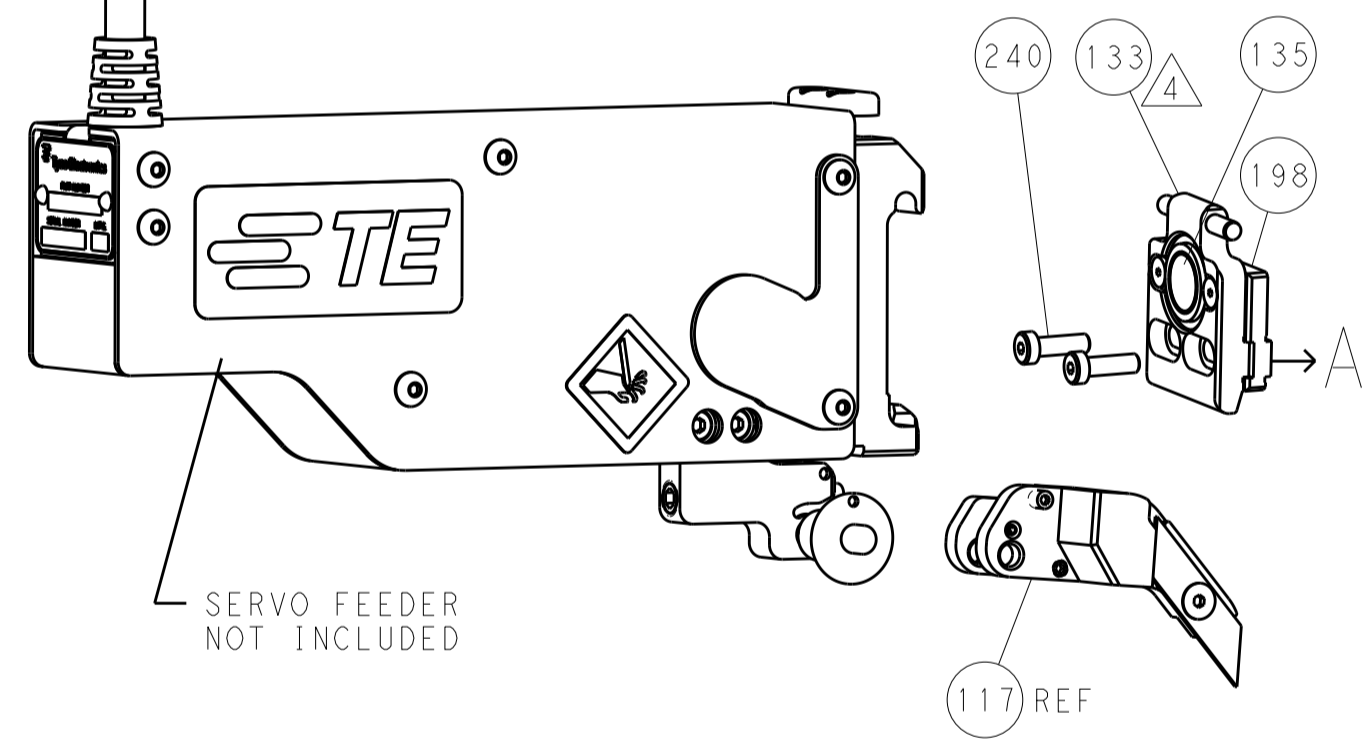
### FEED TYPE MECHANICAL



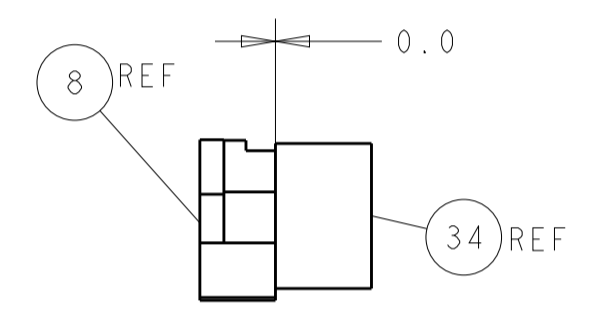
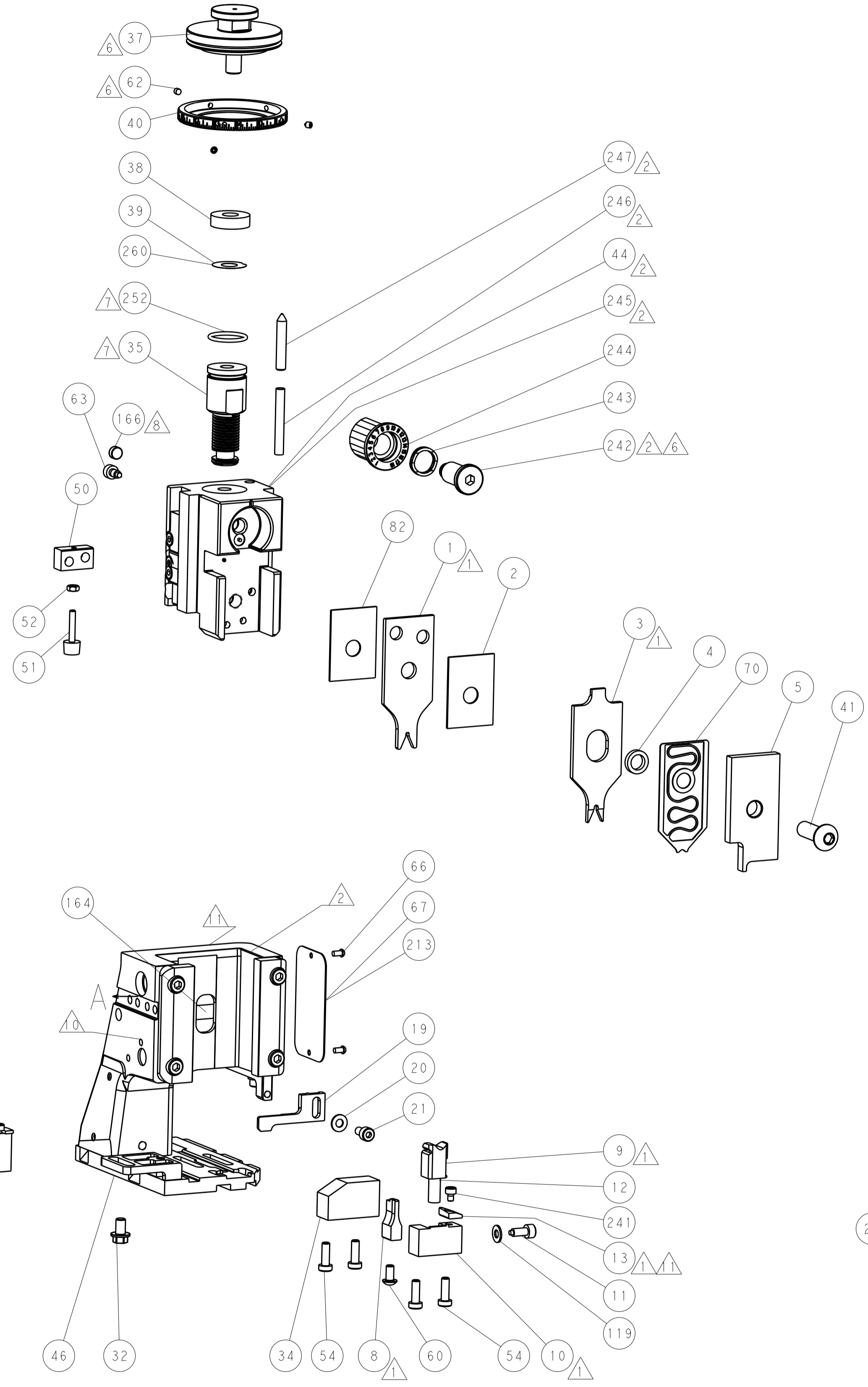
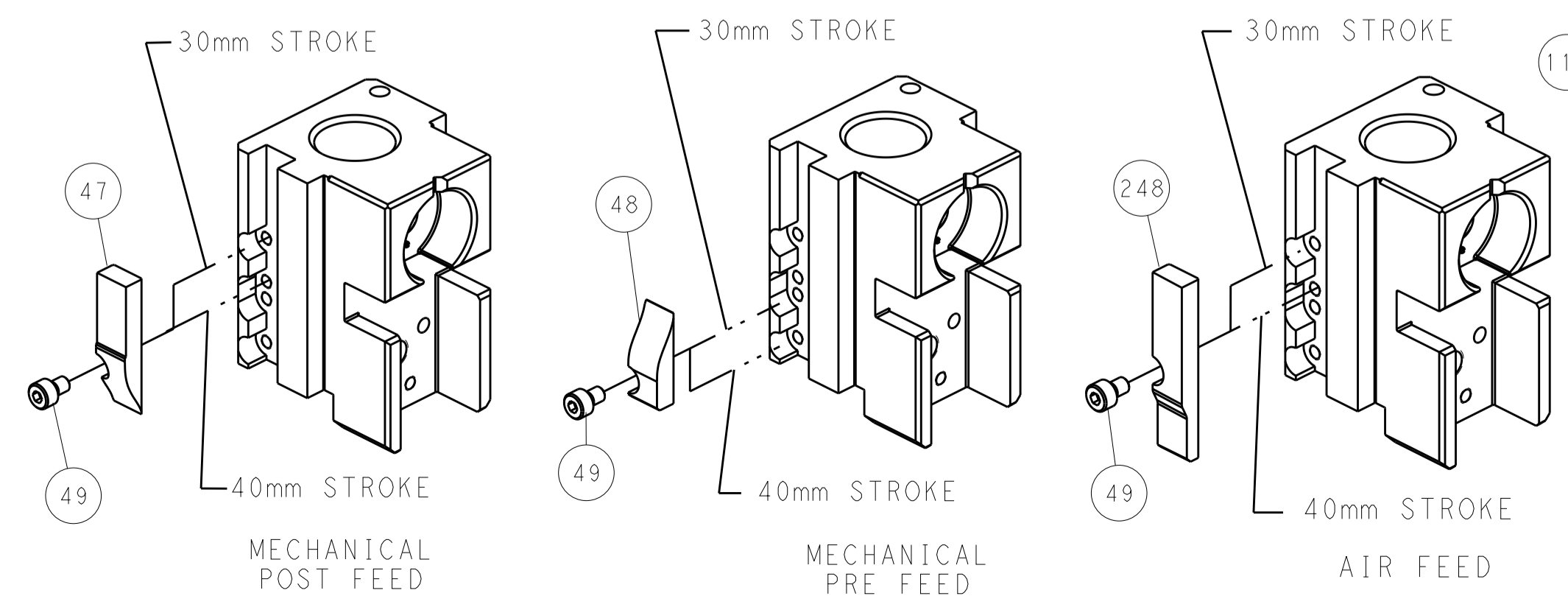
### PNEUMATIC



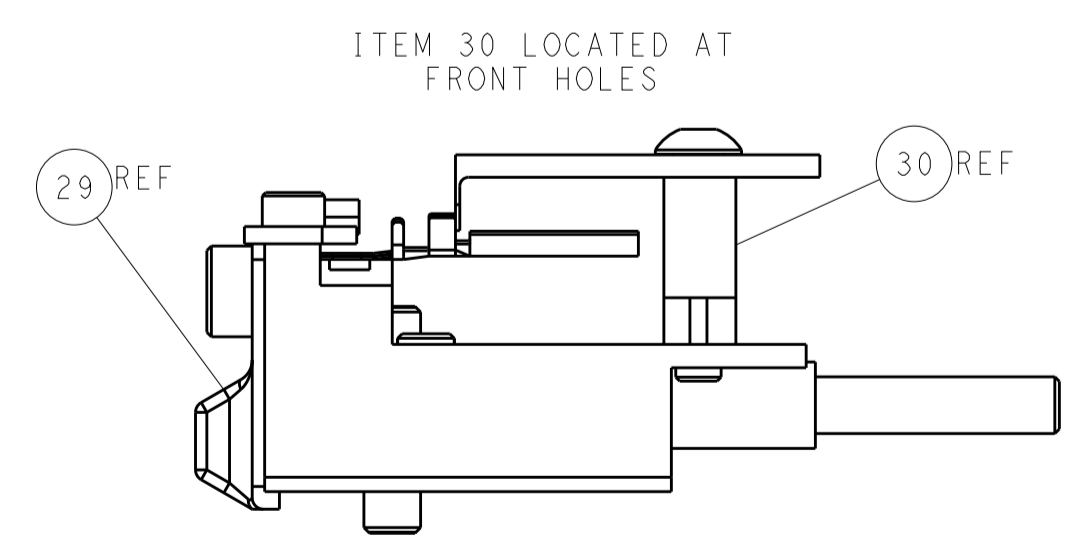
### SERVO LATCH PLATE



### CAM POSITIONS



TERMINAL SUPPORT LOCATION



FEED TRACK POSITION GUIDE BY WIRE BARREL

**ATLANTIC VERSION**  
 Shown on sheets 1 of 4 & 2 of 4  
 (Pacific version shown on sheets 3 of 4 & 4 of 4)

DIMENSIONS:		TOLERANCES UNLESS OTHERWISE SPECIFIED:		OWN: R. KNEPPER 16-Oct-13		TE Connectivity	
mm	0 PLC ±	1 PLC ±	2 PLC ±	3 PLC ±	4 PLC ±	5 PLC ±	Harrisburg, PA 17105-3608
MATERIAL:		FINISH:		CHK: G. BAILEY 16-Oct-13		NAME: Ocean Side Feed Applicator	
CUSTOMER DRAWING		SCALE: 1:2		APVD: M. CLIFFORD 16-Oct-13		RESTRICTED TO:	
				PRODUCT SPEC:		SIZE: CAGE CODE: DRAWING NO:	
				APPLICATION SPEC:		A11 00779 ©=2266117	
				WEIGHT:		SHEET 2 OF 4 REV C	

PACIFIC VERSION TERMINATOR INTERFACE ADAPTER	PART NUMBER	REVISION	DESCRIPTION	FEED TYPE
	2-2266117-1	C	FINE CRIMP HEIGHT ADJUST	MECHANICAL
	2-2266117-2	C	FINE CRIMP HEIGHT ADJUST	PNEUMATIC
	2-2266117-5	C	FINE CRIMP HEIGHT ADJUST	SERVO LATCH PLATE <sup>4</sup>
	2-2266117-7	C	FINE CRIMP HEIGHT ADJUST	NONE
	7-2266117-7	C	CRIMP TOOLING KIT	-
	7-2266117-8	C	APPLICATOR CONVERSION KIT	- <sup>4</sup>

APPLICATOR DATA		
CRIMP	SIZE	TYPE
WIRE	1.75 mm [.069]	F
INSUL	2.29 mm [.090]	O
APPLICATOR INSTRUCTIONS 408-10389		

APPLICATOR CONVERSION KITS	
PART NUMBER	INSULATION DIAMETER RANGE
7-2266116-8	Ø2.74-3.18mm [.109-.125]
7-2266117-8	Ø2.31-2.72mm [.091-.107]
7-2266118-8	Ø1.91-2.29mm [.075-.090]
7-2266119-8	Ø1.60-2.16mm [.063-.085]
7-2266120-8	Ø1.27-1.57mm [.050-.062]

TERMINAL DATA: DEUTSCH TERMINAL TE CRIMP SPECIFICATION			
TERMINAL NAME: STAMPED CONTACT PIN SIZE 20			
WIRE STRIP LENGTH		INSULATION DIAMETER RANGE	
3.81-5.08 mm [1.50-.200 IN]		Ø2.31-2.72 mm [.091-.107 IN]	
TERMINAL APPLICATION SPECIFICATION	114-151003	-	-
TERMINALS APPLIED <sup>13</sup>			
TE TERMINAL	DEUTSCH TERMINAL	TE TERMINAL	DEUTSCH TERMINAL
1572032-1	1060-20-0122	1572032-2	1060-20-0144
1572032-7	1060-20-0177		

TERMINAL DATA: DEUTSCH TERMINAL TE CRIMP SPECIFICATION			
TERMINAL NAME: STAMPED CONTACT SOCKET SIZE 20			
WIRE STRIP LENGTH		INSULATION DIAMETER RANGE	
3.81-5.08 mm [1.50-.200 IN]		Ø2.31-2.72 mm [.091-.107 IN]	
TERMINAL APPLICATION SPECIFICATION	114-151003	-	-
TERMINALS APPLIED <sup>13</sup>			
TE TERMINAL	DEUTSCH TERMINAL	TE TERMINAL	DEUTSCH TERMINAL
286680-1	1062-20-0122	286680-2	1062-20-0144
286680-9	1062-20-0177	286680-5	1062-20-0322
286680-6	1062-20-0344	1-286680-0	1062-20-0377

WIRE SIZE	CRIMP HEIGHT mm [INCH]	CRIMP HEIGHT REFERENCE SETTING
1.50mm2	1.47+0.03/-0.05 [.058+.001/- .002]	3.4
16 AWG	1.27+0.03/-0.05 [.050+.001/- .002]	5.4
1.00mm2	1.27+0.03/-0.05 [.050+.001/- .002]	5.4
18 AWG	1.24+0.03/-0.05 [.049+.001/- .002]	5.7
0.75mm2	1.22+0.03/-0.05 [.048+.001/- .002]	5.9
0.60mm2	1.07+0.03/-0.05 [.042+.001/- .002]	7.4
20 AWG	0.99+0.03/-0.05 [.039+.001/- .002]	8.2
0.50mm2	0.97+0.03/-0.05 [.038+.001/- .002]	8.4
22 AWG	0.94+0.03/-0.05 [.037+.001/- .002]	8.7
0.35mm2	0.94+0.03/-0.05 [.037+.001/- .002]	8.7

- <sup>1</sup> RECOMMENDED SPARE PARTS
- <sup>2</sup> GREASE BEARING SURFACES LIGHTLY
- 3. LUBRICATE DAILY PER THE APPLICATOR INSTRUCTION SHEET SUPPLIED WITH THE APPLICATOR.
- <sup>4</sup> APPLICATOR SPECIFIC DATA TO BE ENTERED INTO BLANK MEMORY CHIP AT ASSEMBLY. SEE BELOW FOR PART NUMBER:  
MECHANICAL FEED WITH "SMART APPLICATOR" CONVERSION: 8-2266117-4  
PNEUMATIC FEED WITH "SMART APPLICATOR" CONVERSION: 8-2266117-4  
SERVO FEED WITH "FINE CRIMP HEIGHT ADJUST": 8-2266117-5
- 5. ADJUSTMENT OF THE STRIPPER MAY BE REQUIRED WHEN MOVING THE APPLICATOR BETWEEN BENCH AND LEADMAKER APPLICATIONS.
- <sup>6</sup> APPLY PART NUMBER 1-23419-5 LOCTITE TO THREADS OF ITEMS 62.  
APPLY PART NUMBER 2-23419-6 LOCTITE TO THREADS OF ITEMS 242.
- <sup>7</sup> GREASE THREADS, GROOVE AND O-RING ON ITEMS 139 & 152.
- <sup>8</sup> MAGNET MUST BE ORIENTED CORRECTLY IN ORDER TO PROPERLY ACTUATE THE COUNTER.
- <sup>9</sup> CRIMP HEIGHT REFERENCE SETTING WAS THE SETTING USED WHEN THE APPLICATOR WAS QUALIFIED AT THE FACTORY. ADJUSTMENT MAY BE NECESSARY WHEN RUNNING APPLICATOR IN THE FIELD.
- <sup>10</sup> SPARE FEED CAM STORAGE LOCATION REFER TO INSTRUCTION SHEET FOR ADDITIONAL INFORMATION.
- <sup>11</sup> TO CONVERT THE APPLICATOR TO A NON-CARRIER CUTTING STYLE, REMOVE ITEM 13 AND ATTACH TO THE LOCATION ON BACK SIDE OF THE HOUSING. REFER TO INSTRUCTION SHEET FOR ADDITIONAL INFORMATION.
- <sup>12</sup> SEE APPROPRIATE APPLICATOR LOG SHEETS FOR APPLIED TERMINALS, WIRE RANGE AND MEMORY CHIP.
- <sup>13</sup> TERMINAL LUBRICANT IS RECOMMENDED.

APPLICATOR STYLE CONVERSION CHART									
CONVERT TO	PART NUMBERS REQUIRED								
PNEUMATIC FEED	2119950-1	1338685-1	5-18022-5	2119641-2	2119799-1	2063440-1			
SERVO LATCH PLATE	2119951-1	-	8-2266117-5	1901094-3	-	2168400-6 (QUANTITY 2)			
SMART APPLICATOR	2161326-1	-	8-2266117-4	-	-	-			
MECHANICAL FEED	2119949-1	1338685-1	5-18022-5	2119653-2	-	-			
SERVO LATCH PLATE	2119951-1	-	8-2266117-5	1901094-3	-	2168400-6 (QUANTITY 2)			
SMART APPLICATOR	2161326-1	-	8-2266117-4	-	-	-			
MECHANICAL FEED	2119949-1	1338685-1	5-18022-5	2119653-2	-	-			
PNEUMATIC FEED	2119950-1	1338685-1	5-18022-5	2119641-2	2119799-1	2063440-1			

**\*WARNING**  
ON INSTALLATION, SET WIRE DISC, ITEM 40 TO LARGEST WIRE SIZE SETTING. USE OF SETTINGS BELOW MINIMUM REQUIRED CRIMP HEIGHT SETTING WILL CAUSE DAMAGE TO CRIMP TOOLING.

-78 -77 -27 -25 -22 -21	PART NO	DESCRIPTION	ITEM NO
-	2119782-1	FINE ADJUST HEAD ASM, PACIFIC STYLE	251
-	2119640-1	PUSH ROD, AIR FEED	250

**PACIFIC VERSION**  
Shown on sheets 3 of 4 & 4 of 4  
(Atlantic version shown on sheets 1 of 4 & 2 of 4)

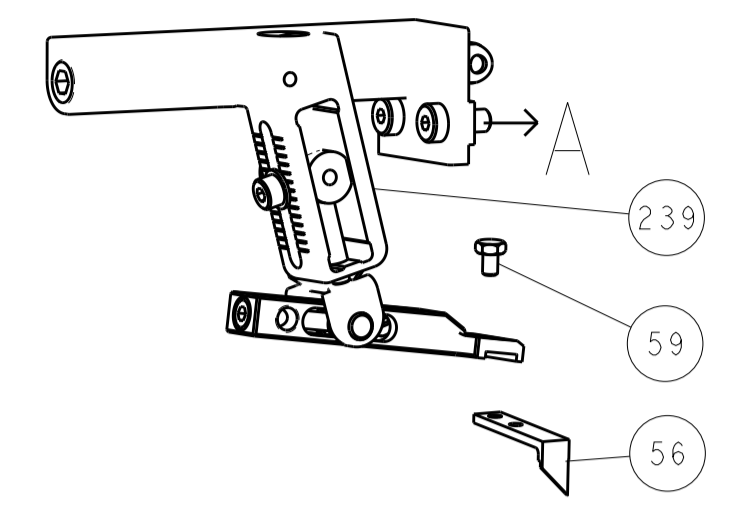
SET UP GAUGE	LOC	DIST	REVISIONS					
2119599-1	A	66	P	LTN	DESCRIPTION	DATE	OWN	APVD
			-	-	SEE SHEET 1	-	-	-

-	-	-	-	1	-	2079988-1	BUSHING, LCH5-12, MISUMI	249
-	-	1	1	1	1	1-22279-3	SPRING, COMPRESSION	246
-	-	1	1	1	1	2119082-9	CAM, SNAIL, INSULATION ADJUSTMENT	244
-	-	1	1	1	1	2079764-1	WASHER, WAVE SPRING, CREST-TO-CREST	243
-	-	1	1	1	1	2119083-1	RETAINER, INSULATION DIAL	242
-	-	1	1	1	1	7-18023-7	SCR, SKT HD CAP M3 X 4.0	241
-	-	-	2	-	-	2168400-6	SHCS, LOW HEAD, RoHS, M5 X 16	240
-	-	-	-	-	1	2119580-1	MECHANICAL FEED ASSEMBLY	239
-	-	-	-	1	-	2063440-1	AIR FEED MODULE	238
-	-	-	1	-	-	2119740-2	TAG, IDENTIFICATION	213
-	-	-	1	-	-	1901094-3	SPACER, FEEDER	198
-	-	-	-	2	-	21045-3	RING, RETAIN, EXTERN, 3/16 CRESCENT	172
-	-	1	1	1	1	994969-1	MAGNET, RARE EARTH HIGH ENERGY	166
-	-	REF	REF	REF	REF	994970-2	COUNTER, MAGNETIC	164
-	-	-	-	1	-	240638-1	SPRING, FEED FINGER	163
-	-	1	1	1	1	8-21084-1	O-RING, .801 ID, .070 DIA. MAT.	152
-	-	-	-	1	-	2119641-2	FEED CAM, AIR FEED	151
-	-	1	1	1	1	2119798-2	DETENT PIN	145
-	-	1	1	1	1	2079383-8	SCR, BHSC, RoHS (M4 X 16)	144
-	-	4	4	4	4	2168400-5	SHCS, LOW HEAD, RoHS, M4 X 20	143
-	-	-	-	-	1	2119653-2	FEED CAM, POST FEED	142
-	-	1	1	1	1	1-2119656-0	APPLICATOR BASIC ASSEMBLY, SF	141
-	-	1	1	1	1	2119650-1	RAM, ASIAN STYLE, SIDE FEED	140
-	-	1	1	1	1	2119092-2	BOLT, ADJUSTMENT	139
-	-	-	-	1	-	3-23627-7	PIN, RETAIN, GRVD, 3/16 X .854	137
-	-	-	-	1	-	2119799-1	HOLDER, FEED FINGER, AF	136
-	-	-	-	REF	-	-	SEE NOTE 4	135
-	-	-	-	1	-	1633743-1	SERVO FEED LATCH ASM	133
-	-	1	1	1	1	1-18028-2	WASHER, FLAT, REG M4	119
-	-	-	-	REF	-	2119944-1	FEED FINGER ASSEMBLY, SF	117
-	-	1	1	1	1	2119955-1	ASSY, LUBRICATOR, SIDE FEED	113
-	-	1	1	1	1	455888-7	SPACER, CRIMPER	82
1	-	-	-	-	-	2266117	PRINT, APPLICATOR LOG SHEET	72
-	-	1	1	1	1	2119956-1	DOCUMENTATION PACKAGE	71
-	-	1	1	1	1	2119791-9	DEPRESSOR, WIRE	70
-	-	1	-	1	1	2119740-1	TAG, IDENTIFICATION	67
-	-	2	2	2	2	2168078-1	SCREW, DRIVE, RH, RoHS, 2 x .188	66
-	-	1	1	1	1	2119793-1	LIMITER, ADJUSTMENT BOLT	63
-	-	3	3	3	3	992763-5	SCR, SET, SOC, CONE POINT, M3 X 4.0	62
-	-	-	-	1	1	5-18022-5	SCR, HEX HD CAP, M4 X 6.0	59
-	-	-	-	1	1	1338685-1	PAWL, FEED	56
-	-	2	2	2	2	1-2168083-0	SCR, SKT HD CAP, RoHS, M4 X 10	53
-	-	1	1	1	1	5018030-1	NUT, HEX, REG, RoHS, M3	52
-	-	1	1	1	1	811242-5	BUMPER, HOLD DOWN	51
-	-	1	1	1	1	690753-2	SPACER, TONKER	50
-	-	-	-	1	2	18023-9	SCR, SKT HD CAP M4 X 6.0	49
-	-	-	-	-	1	2119652-1	FEED CAM, PRE FEED	48
-	-	1	1	1	1	2079383-7	SCR, BHSC, RoHS (M8 X 25)	41
-	-	1	1	1	1	2119645-1	DISC, NUMBERED FA WIRE ADJUSTMENT	40
-	-	1	1	1	1	2119957-1	APPLICATOR SHIM PACK	39
-	-	1	1	1	1	2119644-1	RAM WASHER, PRECISION	38
-	-	1	1	1	1	2-1752356-0	SUPPORT, TERMINAL	34
-	-	2	2	2	2	2079383-5	SCR, BHSC, RoHS (M4 X 20)	33
-	-	1	1	1	1	2161328-1	HEX HEAD, FLANGED, M5 X 8mm LONG	32
-	-	1	1	1	1	1-1320908-0	SPACER, STRIP GUIDE	30
-	-	1	1	1	1	2119959-1	ASSEMBLY, STRIP GUIDE	29
-	-	1	1	1	1	1320928-2	STRIP GUIDE	24
-	-	1	1	1	1	2168083-2	SCR, SKT HD CAP, RoHS, M4 X 8.0	21
-	-	1	1	1	1	1-18028-2	WASHER, FLAT, REG M4	20
-	-	1	1	1	1	2119533-1	STRIPPER, SIDE FEED	19
-	-	1	1	1	1	2119806-1	INSERT, SHEAR	13
-	-	1	1	1	1	3-22280-3	SPRING, COMPRESSION	12
-	-	1	1	1	1	1-356885-4	STOP, SHEAR	11
-	-	1	1	1	1	2119805-1	SHEAR HOLDER, FRONT	10
-	-	1	1	1	1	1803095-1	FLOATING SHEAR, FRONT	9
1	1	1	1	1	1	1-1803293-3	ANVIL, COMBINATION DEUTSCH STYLE	8
-	-	-	-	-	-	-	-	7
-	-	-	-	-	-	-	-	6
-	-	1	1	1	1	2119757-3	DEPRESSOR, SHEAR	5
-	-	1	1	1	1	238011-9	BLOCK, CRIMPER SPACER	4
1	1	1	1	1	1	1803019-5	CRIMPER, INSULATION O	3
-	-	1	1	1	1	455888-8	SPACER, CRIMPER	2
-	-	1	1	1	1	1803364-2	CRIMPER, WIRE PREMIUM	1

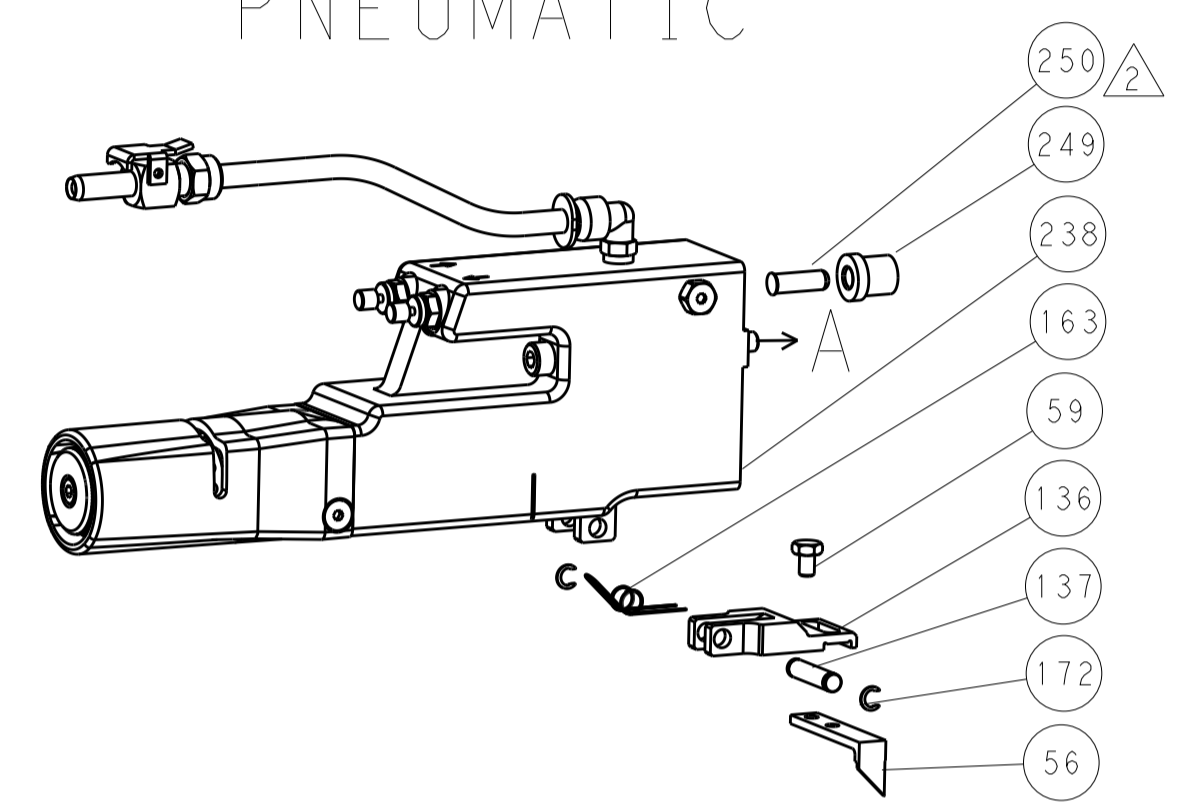
DIMENSIONS:		TOLERANCES UNLESS OTHERWISE SPECIFIED:		APPROVED:		NAME:	
mm	0 PLC ±	1 PLC ±	2 PLC ±	3 PLC ±	4 PLC ±	APPROVED	NAME
	ANGLES	FINISH					
MATERIAL		WEIGHT					
CUSTOMER DRAWING				SCALE	SHEET	OF	REV
				1:2	3	4	C

LOC		DIST		REVISIONS			
A	66	P	LTM	DESCRIPTION	DATE	DMN	APVD
		-		SEE SHEET 1			

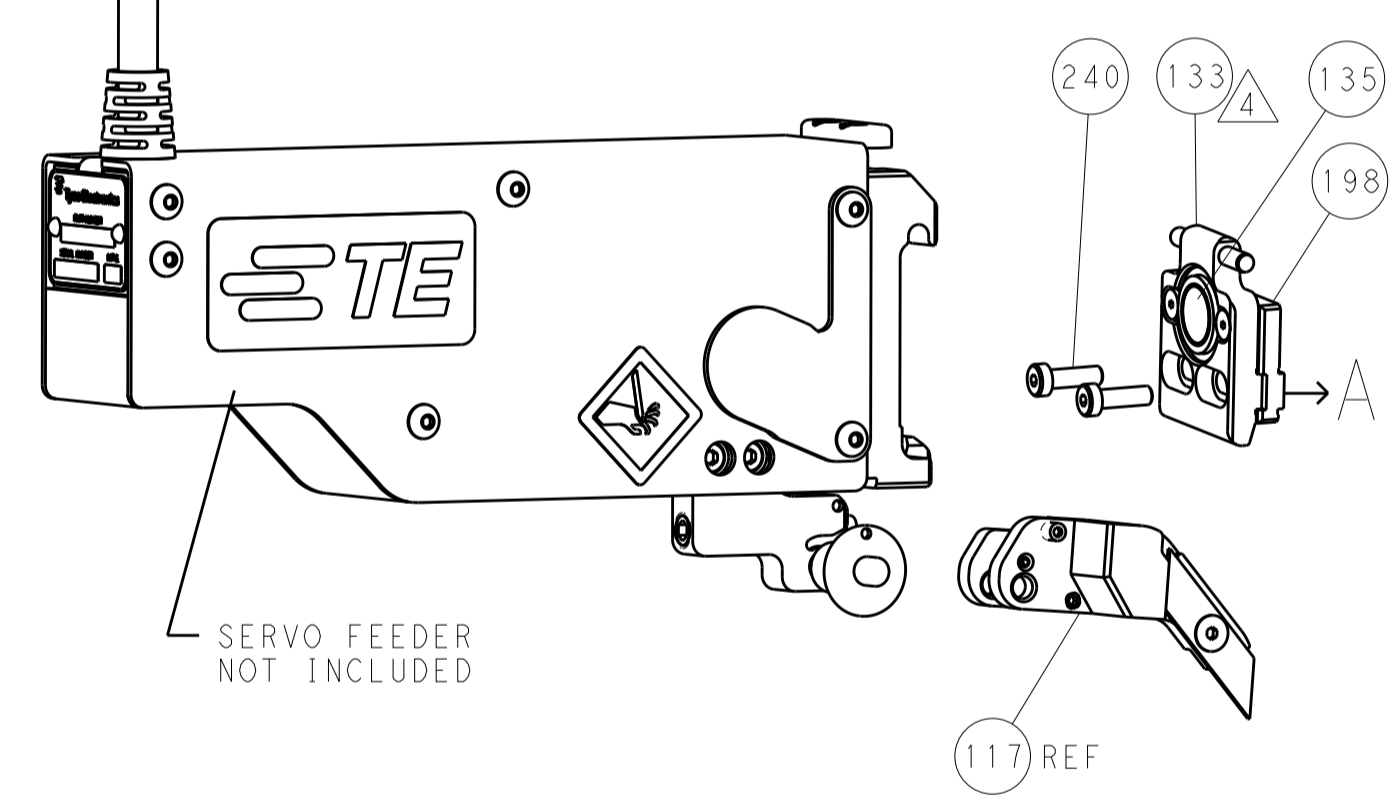
# FEED TYPE MECHANICAL



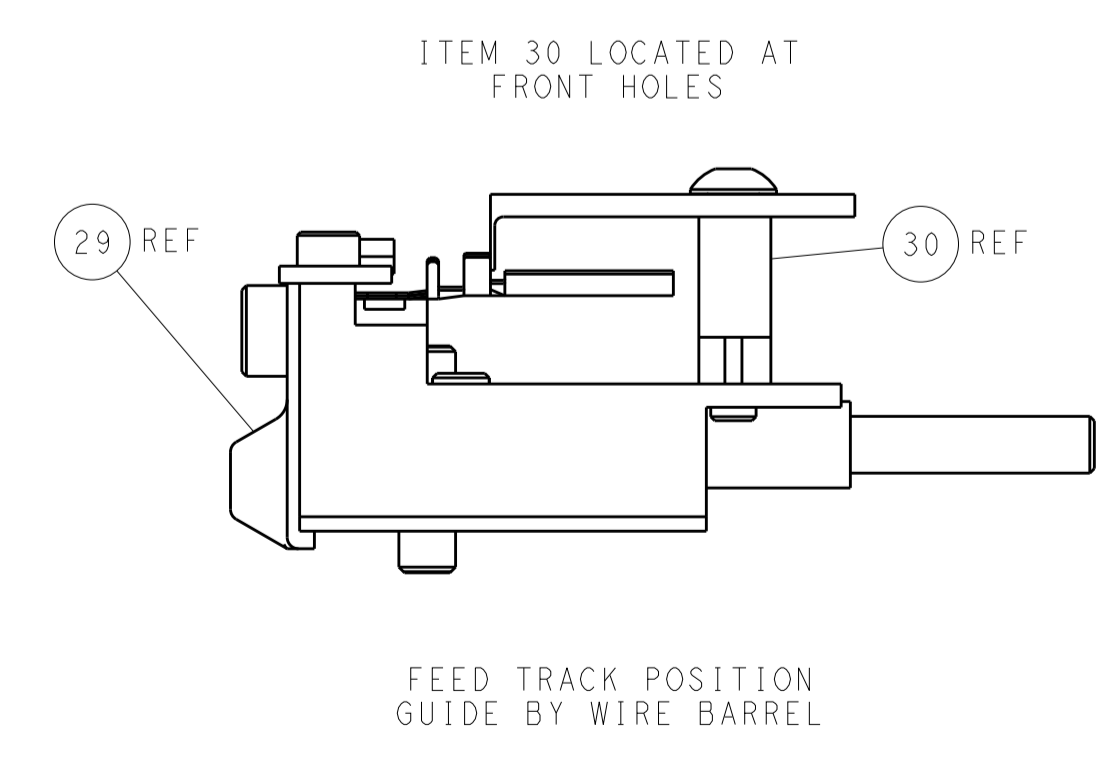
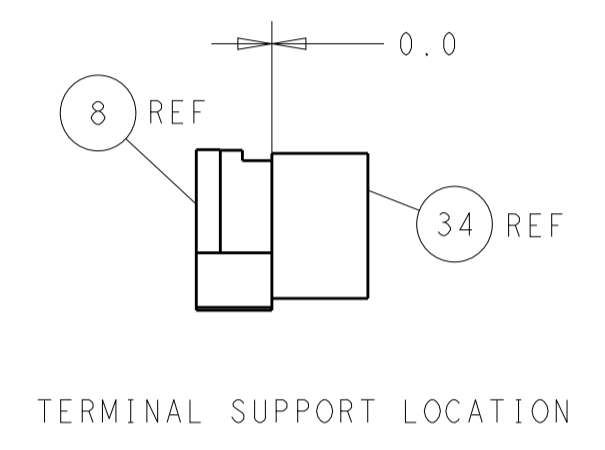
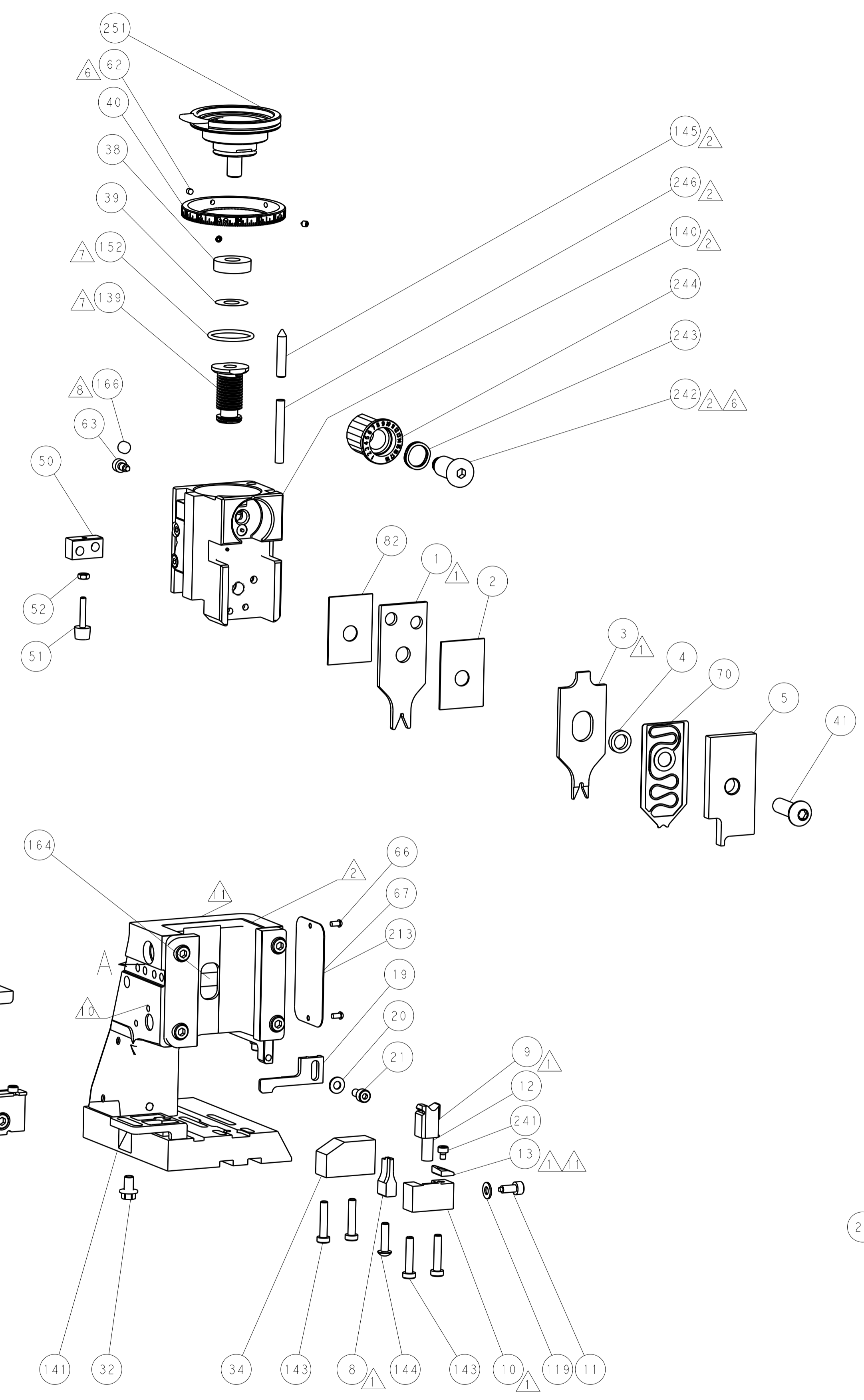
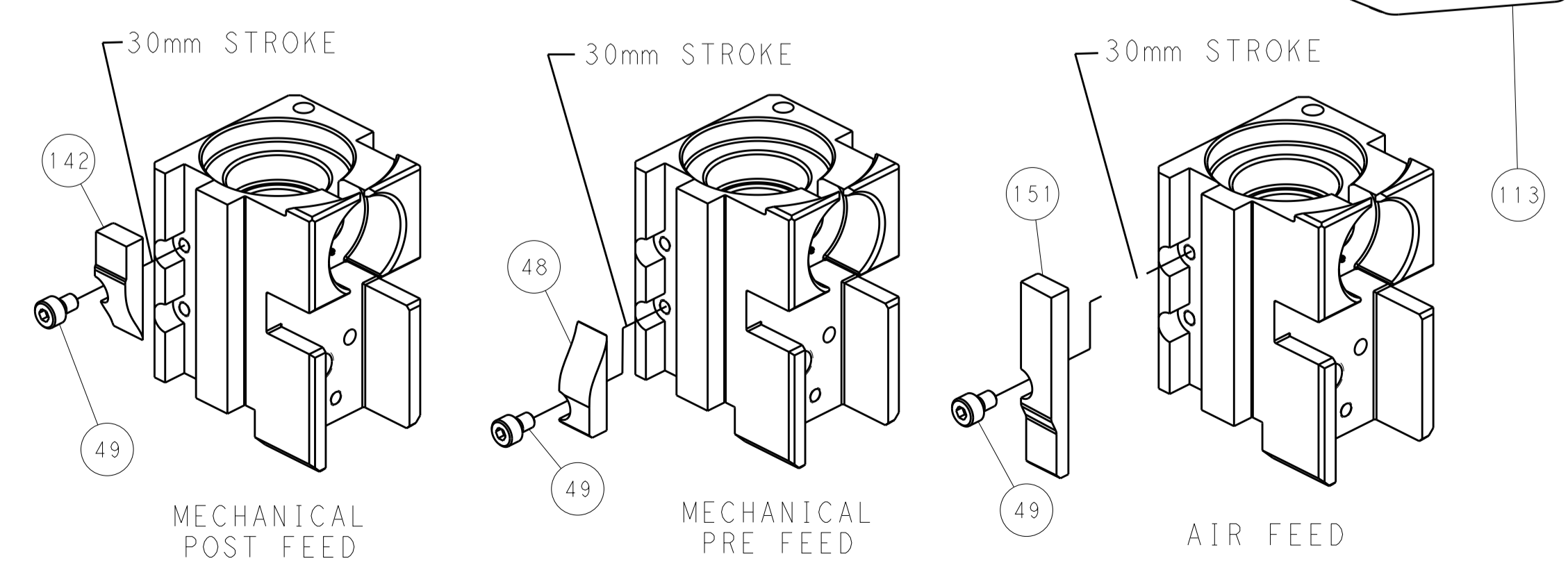
# PNEUMATIC



# SERVO LATCH PLATE



# CAM POSITIONS



**PACIFIC VERSION**  
 Shown on sheets 3 of 4 & 4 of 4  
 (Atlantic version shown on sheets 1 of 4 & 2 of 4)

DIMENSIONS: mm 		TOLERANCES UNLESS OTHERWISE SPECIFIED: 0 PLC ± 1 PLC ± 2 PLC ± 3 PLC ± 4 PLC ± ANGLES ±		DWG: R. KNEPPER 16-Oct-13 CHK: G. BAILEY 16-Oct-13 APVD: M. CLIFFORD 16-Oct-13 PRODUCT SPEC: APPLICATION SPEC: WEIGHT: CUSTOMER DRAWING:		NAME: Ocean Side Feed Applicator SIZE: CAGE CODE DRAWING NO: A1 00779 ©=2266117 SCALE: 1:2 SHEET 4 OF 4 REV C	
-----------------------	--	---	--	--	--	---	--