



Release Notes for EV-COG-AD3029LZ Board Support Package 1.0.0

Contents

1	Introduction	3
2	Required Software	4
2.1	CrossCore Embedded Studio	4
3	Release Testing	5
3.1	CrossCore Embedded Studio	5
4	License Checking	6
5	Release Content	7
5.1	Location	7
5.2	Directory Information	7
5.3	Running Examples on EV-COG-AD3029LZ Board	8
5.4	Contacting Technical Support	9
6	Known Issues	10

1 Introduction

EV-COG-AD3029LZ 1.0.0 Board Support Package (BSP) contains software examples using EV-COG-AD3029LZ hardware. This BSP contains various On-chip Peripheral examples, Sensor Strobe example, Bluetooth Low Energy examples, and various Sensor examples. This BSP is supported in CrossCore Embedded Studio 2.6.0.

2 Required Software

2.1 CrossCore Embedded Studio

To use this BSP with CrossCore Embedded Studio (CCES), you must first obtain and install:

- CrossCore Embedded Studio 2.6.0
- ADuCM302x Device Family Pack 2.0.0
- ADI-SensorSoftware 1.1.0
- ADI-BleSoftware 1.0.0

3 Release Testing

3.1 CrossCore Embedded Studio

The BSP has been tested with

Board	Emulator
EV-COG-AD3029LZ	CMSIS-DAP

4 License Checking

Use of the BSP software is subject to the Software License Agreement presented during installation.

5 Release Content

This release contains the following examples

- On-chip peripheral examples present on the EV-COG-AD3029LZ board.
- Bluetooth examples based on Findme Target, Proximity Reporter and Data Exchange profiles. These examples are authored by Analog Devices and demonstrate the use of Bluetooth Low-Energy.
- Sensor software examples using Accelerometer (ADXL362), Temperature(ADT7420) sensors. ADXL362 example using Sensor Strobe is also delivered in this package.

5.1 Location

The EV-COG-AD3029LZ BSP will be installed into the CMSIS pack directory for the targeted development environment:

CCES	<code><cces_root>\ARM\PACK\AnalogDevices\EV-COG-AD3029LZ_BSP\1.0.0</code>
-------------	---

5.2 Directory Information

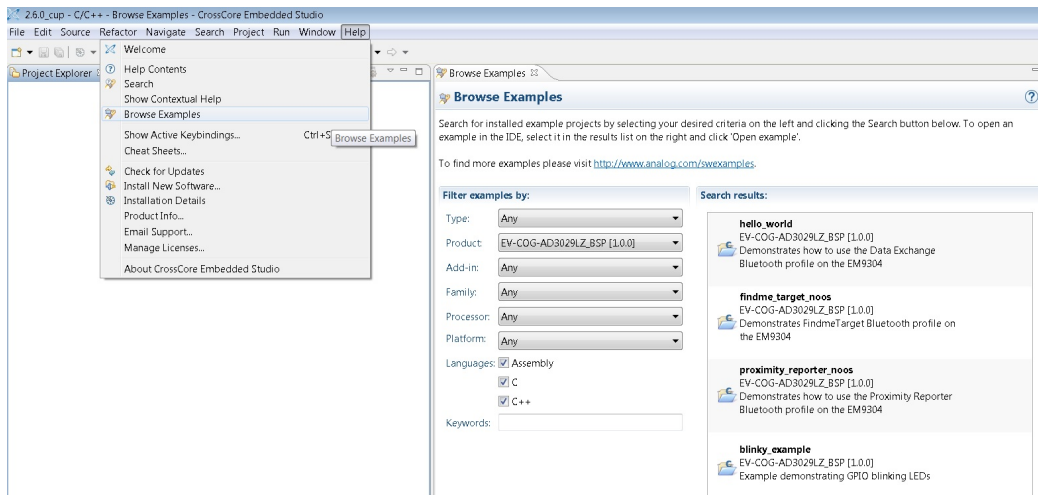
Directory	Description
Boards/EV-COG-AD3029LZ/Examples/communication/ble	Bluetooth Examples
Boards/EV-COG-AD3029LZ/Examples/drivers	On-chip peripheral Examples
Boards/EV-COG-AD3029LZ/Examples/sensor	Sensor Examples
Source/drivers	Off-chip peripheral driver source files
Include/drivers	Off-chip peripheral driver header files
Documents/	Documentation
Tools/ble/programmer	Bluetooth Low-Energy OTP Tool (binary and source)

Directory	Description
License	License agreement

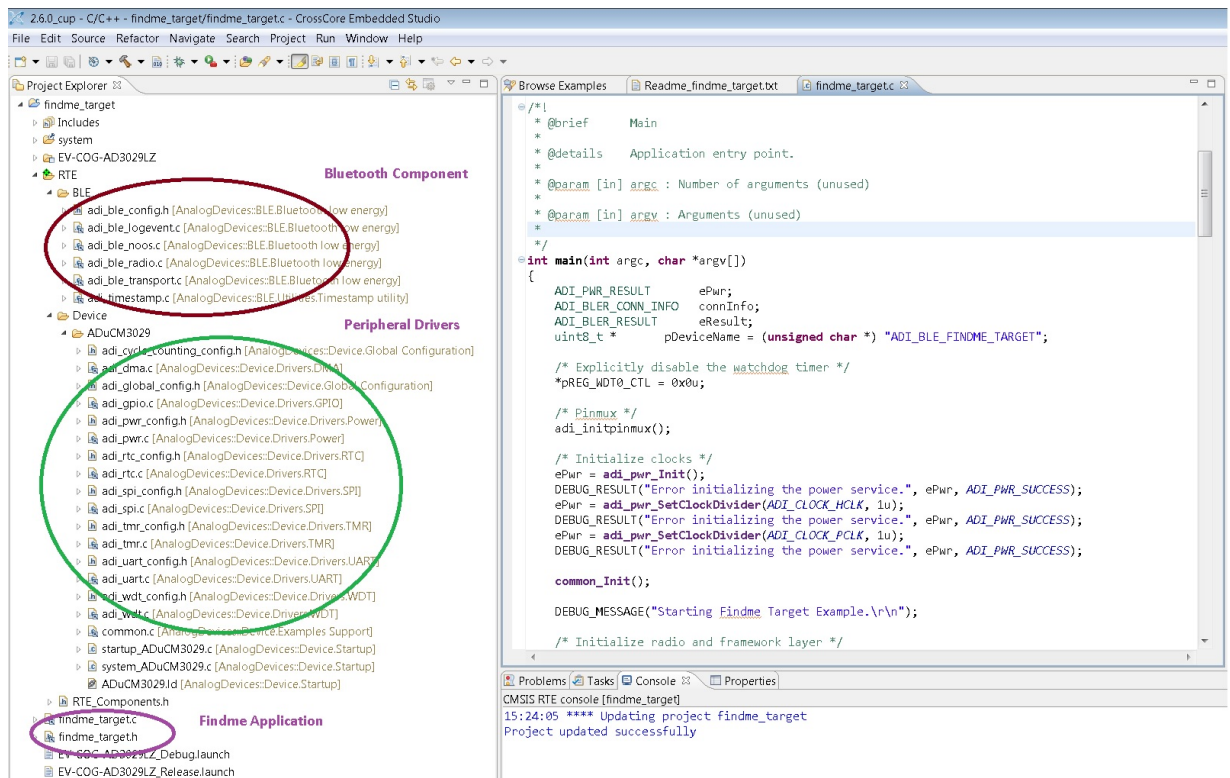
5.3 Running Examples on EV-COG-AD3029LZ Board

Examples from the EV-COG-AD3029LZ Board Support Package 1.0.0 can be run by following below steps

- Click on Help Browse Examples
- Select Product EV-COG-AD3029LZ_BSP [1.0.0]
- Double click on any example
- Build and run the example



- Findme_target_noos example project loaded into CCES 2.6.0



5.4 Contacting Technical Support

You can reach Analog Devices software and tools technical support in the following ways:

- Post your questions in the software and development tools support community at [EngineerZone®](#).
- E-mail your questions about processors and processor applications to [processor.support@analog.com](mailto:support@analog.com).
- For Greater China, Processors and DSP applications and processor questions can be sent to: processor.china@analog.com.
- Submit your questions to technical support directly via <http://www.analog.com/support>.
- Contact your [Analog Devices sales office](#) or authorized distributor.

6 Known Issues

For the latest anomalies please consult our [Software and Tools Anomalies Search](#) page.

- Examples may not load correctly using CCEs File Import (COG3029BSP-47)
-Workaround: Instead of using import use Help Browse Examples to open an example project.