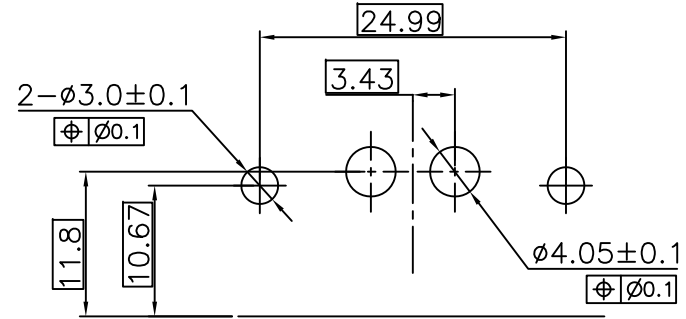
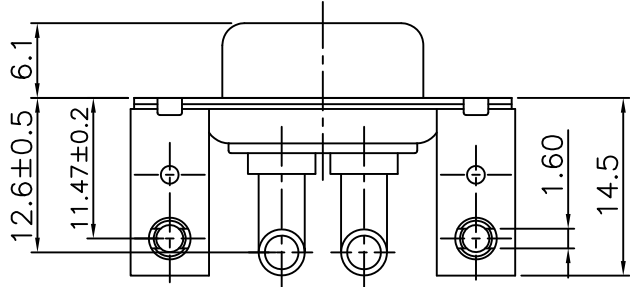
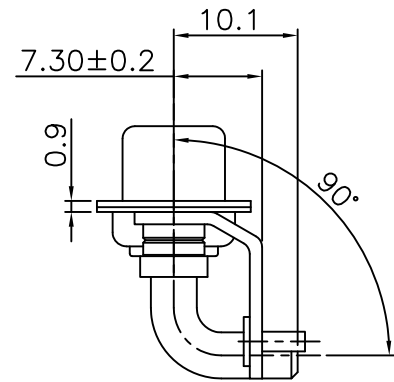
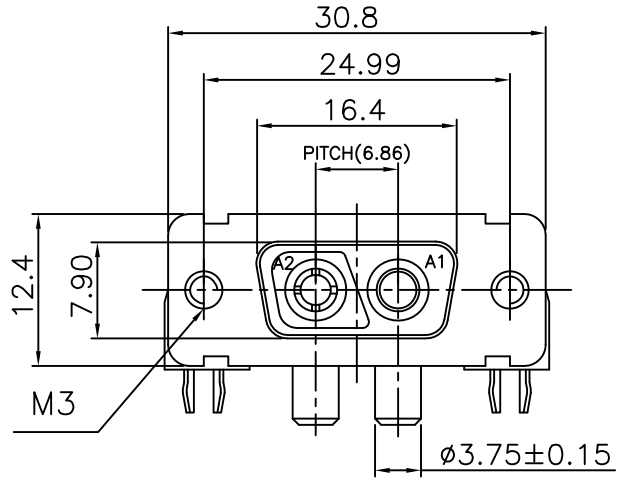
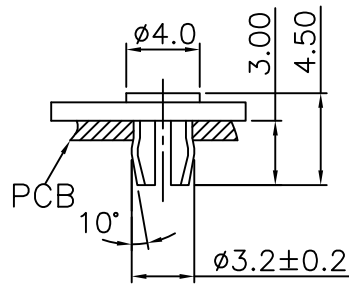


This document is the property of Amphenol Corporation and is delivered on the express condition that it is not to be disclosed, reproduced or used, in whole or in part, for manufacture or sale by anyone other than Amphenol Corporation without its prior consent, & that no right is granted to disclose or to use any information in this document.



RECOMMENDED P.C.B LAYOUT
(thickness :1.6mm)

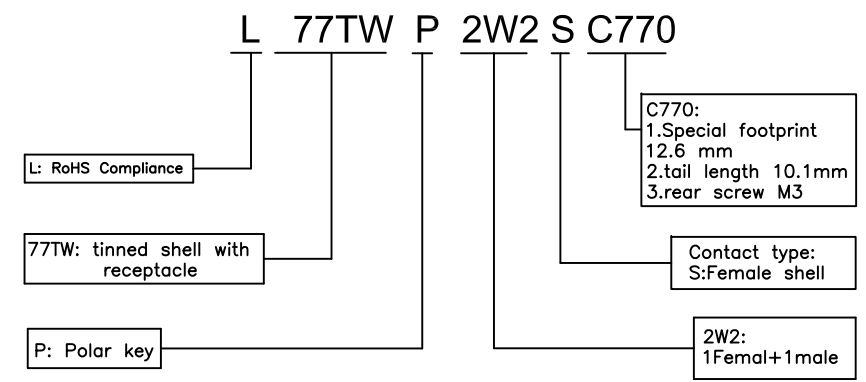
Customer Drawing for proposal

REVISIONS				
SYM	ECN	DESCRIPTION	DATE	APPROVED
1			20/11/08	
2		1.Modify insulator and rear nut view 2.Modify tolerance of dimension "10.1" and "12.6"	Sep/26/11	

D-SUB TECHNICAL DATA

SHELL : Steel, 2.5um(100u") min tin over 1.25um(50u") min nickel
BODY : Glass filled thermoplastic.
 Flame retardant to UL94 V-0, Color Black
CONTACT : Male contact: Brass, Female contact: Bronze
 15u" min gold over 50u" min nickel on mating area
 100u" min tin over 50u" min nickel on solder area
REAR NUT : Brass, 100u" min tin over 50u" min nickel
ELECTRICAL : Voltage rating : 300 V Rms to 50 Hz
 Nominal current : 20-40A
 Withstanding Voltage >1000 V RMS at 50 Hz for one minute
 Insulation resistance >5000 M Ohms
 Contact resistance 30 M ohms max
CLIMATIC : Temperature range -55 °C up to 155°C
 Damp heat 56 days(40 °C-95% HR)
MARKING : Amphenol...(Series No.)
 Commercial reference
 Manufacturing date

PRODUCT CODE



UNLESS OTHERWISE SPECIFIED TOLERANCES		APPROVAL		DATE
U.S.	METRIC	DRAWN	Terry.zie	Sep/26/11
.X +/-	0.50	CHECKED	Lik.wang	Sep/26/11
.XX +/-	0.30	CHECKED		
.XXX +/-	0.20			
FRACTIONS +/-	2'			
ANGLES +/-				
FOR MATERIALS AND FINISHES SEE NOTES		DRAWING FILE :		
REMOVE SHARP EDGES		ANGLE OF PROJECTION		
DIMENSIONS				
U.S.	INCHES			
METRIC	MM			

Amphenol	
Amphenol East Asia Limited	
TITLE D-SUB 2W2 1 MALE & 1 FEMALE	
SIZE	DRAWING NO.
A4	C L77TWP2W2SC770
SCALE	NONE
SHEET	1 OF 1
REV.	2