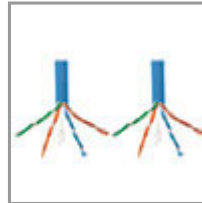


## Cat6 Gigabit Bulk Stranded 24 AWG CMR PVC Cable, Blue, 1000 ft., TAA

MODEL NUMBER: N220-01K-BL



Premium high-speed cabling designed for creating custom-length Cat6 patch cables.

### Description

The N220-01K-BL Cat6 Gigabit Bulk Stranded 24 AWG CMR PVC Cable is premium high-speed cabling for making custom-length patch cable assemblies. Designed for fast transmission and excellent signal quality, this blue cable ensures peak performance through your LAN (local area network).

Manufactured from 24 AWG copper wire, the four-pair stranded UTP N220-01K-BL delivers speeds up to 250 MHz/1 Gbps. Protected by a CMR-rated PVC jacket, this cable drastically reduces impedance and structural return loss as compared to standard 100 MHz wire.

With no center spline, such as found on solid conductor Cat6 cabling, RJ45 plug termination is made easier when used with Tripp Lite's N230-100 RJ45 connectors. At a mere 0.22 inches in diameter, this is a very flexible patch cable.

Near-end crosstalk levels are kept to a minimum, making the N220-01K-BL ideal for 10/100/1000 Base-T Ethernet, 100 Mbps TPDDI, 155 Mbps ATM, ISDN, voice, EIA/TIA and Token Ring Type 3 applications.

The N220-01K-BL meets most current industry standards, including IEEE 802.3ab, IEEE 802.5, ANSI/EIA/TIA 568, ISO/IEC 11801 and ETL (category 6, draft 11).

### Features

#### Perfect Solution for High-Speed Cat6 Premise Applications

- Designed for do-it-yourself custom patch cable assemblies
- Delivers speeds up to 250 MHz/1 Gbps
- No center spline and overall 0.22 in. diameter makes for easy RJ45 plug termination
- Reduces impedance and structural return loss compared to standard 100 MHz wire

### Highlights

- Less impedance and structural return loss than 100 MHz wire
- Channel-tested to 250 MHz/1 Gbps communications
- High-quality 24 AWG 4-pair stranded copper wire
- CMR-rated PVC jacket
- Meets IEEE 802.3ab and ANSI/EIA/TIA 568 standards

### Package Includes

- N220-01K-BL Cat6 Gigabit Bulk Stranded 24 AWG CMR PVC Cable, Blue, 1000 ft.



- Ideal for 10/100/1000 Base-T Ethernet, 100 Mbps TPDDI, 155 Mbps ATM, ISDN, voice, EIA/TIA and Token Ring Type 3 applications

#### Premium Construction for Superior Performance

- Made from 24 AWG copper wire (7 x 32 AWG per conductor)
- 4-pair stranded UTP
- Minimum near-end crosstalk
- CMR-rated PVC jacket
- Meets most current industry standards, including IEEE 802.3ab, IEEE 802.5, ANSI/EIA/TIA 568, ISO/IEC 11801 and ETL (category 6, draft 11)

#### TAA-Compliant

- Compliant with the Federal Trade Agreements Act (TAA) for GSA Schedule purchases

## Specifications

OVERVIEW	
UPC Code	037332196552
Technology	Cat6
INPUT	
Cable Length (ft.)	1000
Cable Length (m)	304.8
PHYSICAL	
Shipping Dimensions (hwd / in.)	11.200 x 13.400 x 13.000
Shipping Dimensions (hwd / cm)	28.45 x 34.04 x 33.02
Shipping Weight (lbs.)	23.0000
Shipping Weight (kg)	10.43
Color	Blue
CONNECTIONS	
Side A - Connector 1	BARE WIRE
Side B - Connector 1	BARE WIRE
WARRANTY	
Product Warranty Period (Worldwide)	Lifetime limited warranty



**Tripp Lite**  
1111 W. 35th Street  
Chicago, IL 60609 USA  
Telephone: 773.869.1234  
[www.tripplite.com](http://www.tripplite.com)

© 2018 Tripp Lite. All rights reserved. All product and company names are trademarks or registered trademarks of their respective holders. Use of them does not imply any affiliation with or endorsement by them. Tripp Lite has a policy of continuous improvement. Specifications are subject to change without notice. Tripp Lite uses primary and third-party agencies to test its products for compliance with standards. See a list of Tripp Lite's testing agencies:  
<https://www.tripplite.com/products/product-certification-agencies>