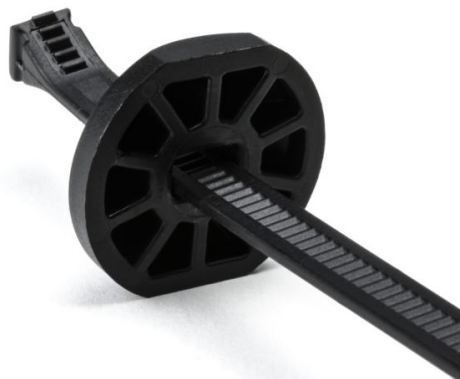


## Specification Sheet

Part Number: 132-00010



Button Head Cable Tie, 9.6" Long, 2.6" Max Bundle Diameter, 105lb, PA66HSUV, Black, 50/pkg

Article Number	132-00010
Type	BT105R
Color	Black (BK)
Features & Benefits	<ul style="list-style-type: none"><li>• Unique two piece tie allows parallel entry and exit through the head for easy assembly.</li><li>• PA66HIRHS material make it ideal for trucking and heavy equipment applications.</li></ul>
Quantity Per	bag

### Product Description

The button head tie is a two piece tie providing for parallel entry and exit through the head. The strap contains serrations on both sides, and has two opposed pawls recessed within a domed head. This design allows the strap to be directed clockwise or counter-clockwise prior to insertion into the head, enabling bi-directional looping.

<b>Short Description</b>	Button Head Cable Tie, 9.6" Long, 2.6" Max Bundle Diameter, 105lb, PA66HSUV, Black, 50/pkg
<b>Global Part Name</b>	BT105R-PA66HIRHSUV-BK
<b>Minimum Tensile Strength (Imperial)</b>	105.0
<b>Minimum Tensile Strength (Metric)</b>	467
<b>Length L (Imperial)</b>	9.6
<b>Length L (Metric)</b>	244.4
<b>Fixation Method</b>	Connector Clip
<b>Identification Plate Position</b>	none
<b>Releasable Closure</b>	No
<b>Tie Closure</b>	plastic pawl
<b>Variant</b>	Outside Serrated
<b>Width W (Imperial)</b>	0.2
<b>Width W (Metric)</b>	5.6
<b>Bundle Diameter Min (Imperial)</b>	0.06
<b>Bundle Diameter Min (Metric)</b>	1.5
<b>Bundle Diameter Max (Imperial)</b>	2.6

<b>Bundle Diameter Max (Metric)</b>	66.7
<b>Material</b>	Polyamide 6.6 high impact modified, heat and UV stabilized (PA66HIRHSUV)
<b>Material Shortcut</b>	PA66HIRHSUV
<b>Material Cable Tie</b>	Polyamide 6.6, high impact modified, heat stabilized (PA66HIRHS)
<b>Material Head</b>	Polyamide 6.6 heat stabilized (PA66HS)
<b>Flammability</b>	UL 94 HB
<b>Operating Temperature (Metric)</b>	-65°F to +212°F (-54°C to +100°C)
<b>Package Quantity(Imperial)</b>	50
<b>Package Quantity (Metric)</b>	50
<b>Customs Number</b>	3926909987