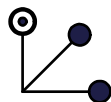


NOTES:

1. ALL DIMENSIONS IN MM [INCH]
2. GENERAL TOLERANCE: X.X=±0.4  
X.XX=±0.25
3. TERM. NOS. FOR REF. ONLY
4. CONTACT RATING: 4A @125VAC/28VDC, 2A @250VAC
5. DIELECTRI STRENGTH: 1KV RMS min. AT SEA LEVEL
6. ELECTRICAL LIFE: 10,000 MAKE-AND-BREAK CYCLES AT FULL LOAD.
7. KEYCODE: A126

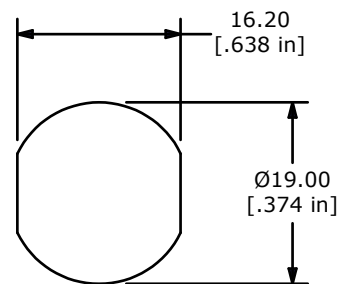


CIRCUIT: SP (45°/45° INDEXING)  
CONTACT CONFIGURATION

SWITCH FUNCTION		
CONNECTED TERMINAL #		
POS. 1	POS. 2	POS. 3
8-1	1-2	2-3

LEGEND

- = DETENT POSITIONS
- ⊙ = KEY PULL POSSIBLE IN THESE POSITIONS



RECOMENDED PANEL CUTOUT



TITLE KO130A

B	21651	REDRAWN INTO INVENTOR FORMAT	10/22/14	AS
REV	PCR NO	DESCRIPTION	DATE	BY

SCALE	DATE	DR	DWG	REV
1:1	10/21/2014	AS	K200210	B

THE INFORMATION CONTAINED IN THIS DOCUMENT IS PROPRIETARY TO E-SWITCH AND IS NOT TO BE COPIED OR TRANSFERRED