

4

3

2

1


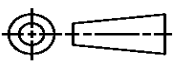
THIS DRAWING IS UNPUBLISHED. RELEASED FOR PUBLICATION  
 © COPYRIGHT ALL RIGHTS RESERVED.

LOC	DIST	REVISIONS			
P	LTR	DESCRIPTION	DATE	DWN	APVD
	B1	ECR-16-009824	28JUL2016	GK	SD

# REPLACED BY OCEAN STYLE APPLICATOR PART NUMBER 2836300-2

FOR REPLACEMENT PARTS FOR APPLICATOR 1339512 REFER TO ADDITIONAL PAGE(S). SPARE PARTS KIT (IF LISTED) WILL REMAIN AVAILABLE.

THE REPLACEMENT OCEAN STYLE APPLICATOR HAS THE SAME TERMINATOR/PRESS INTERFACE AS APPLICATOR 1339512

THIS DRAWING IS A CONTROLLED DOCUMENT.		DWN	GOPALAKRISHNA HV		 TE Connectivity
DIMENSIONS:		CHK	GOPALAKRISHNA HV		
		TOLERANCES UNLESS OTHERWISE SPECIFIED:		NAME	
		0 PLC ± 1 PLC ± 2 PLC ± 3 PLC ± 4 PLC ± ANGLES ±		END FEED HD-I APPLICATOR	
MATERIAL		FINISH		APVD	STOUGH DALE
				PRODUCT SPEC	
				APPLICATION SPEC	
				SIZE	CAGE CODE
				A3	
				DRAWING NO	RESTRICTED TO
				©- 1339512	
				WEIGHT	
				CUSTOMER DRAWING	
				SCALE	SHEET 1 OF 2
				REV B1	

DRAWING MADE IN THIRD ANGLE PROJECTION

1339512 1339512

/home/us016926/DMTECrod

PART NUMBER	REV	FIRST USED	TERMINATOR	FEED TYPE	DESCRIPTION	
1339512-1	B	-	-	BENCH & LEADMAKER	MECH POST FEED	HD-I APPLICATOR
7-1339512-1	B	-	-	BENCH & LEADMAKER	MECH POST FEED	-1 AND SPARE PARTS
7-1339512-7	A	-	-	-	-	SPARE PARTS KIT

CRIMP DATA (AMP TERMINAL)

TERMINAL NAME: RECEPTACLE POSITIVE-LOCK, .187 SERIES

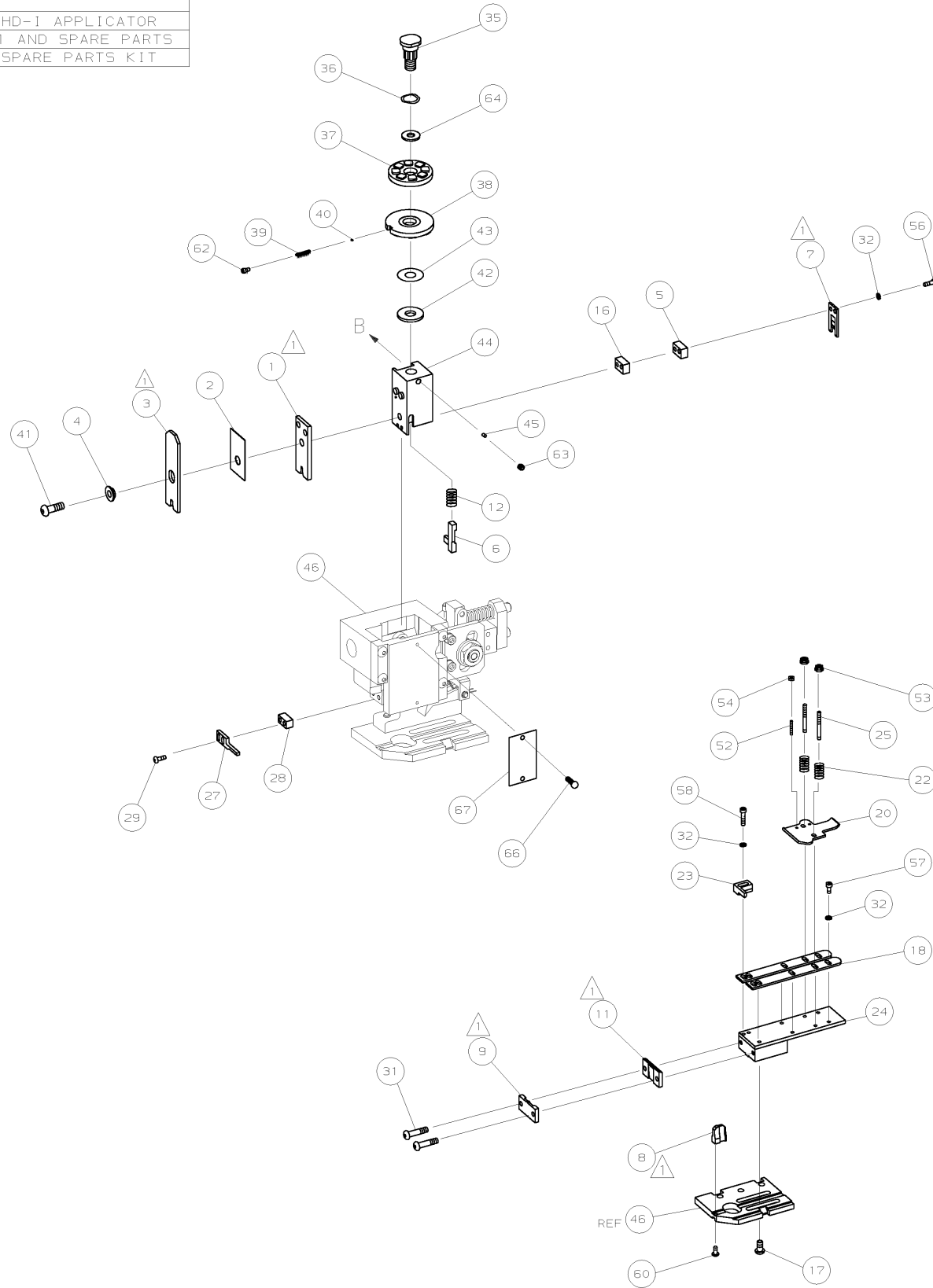
CRIMP	SIZE	TYPE	RANGE
WIRE	1.78 [0.070 IN]	F	24 - 20 AWG
INSUL	3.56 [1.140 IN]	F	1.52-2.79 [0.060-.110 IN]
WIRE STRIP LENGTH	APPL INSTRUCTION		
3.68-4.45 [1.145-.175 IN]	408-8323		

TERMINAL	FEED
APPL SPEC 114-2074	20.70 [0.815 IN]

TERMINALS APPLIED

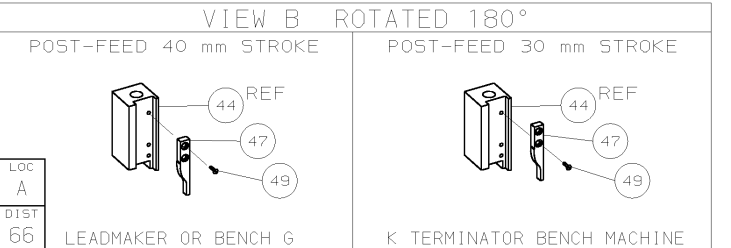
63407				
-	-	-	-	-
-	-	-	-	-
-	-	-	-	-
-	-	-	-	-
-	-	-	-	-
-	-	-	-	-
-	-	-	-	-
-	-	-	-	-

WIRE SIZE mm <sup>2</sup> AWG	CRIMP HEIGHT	PIN PN & LENGTH [IN]
20 AWG	1.04 ±0.05 [0.041 ±.002 IN]	4-354779-6 [0.3220]
22 AWG	0.97 ±0.05 [0.038 ±.002 IN]	5-354779-3 [0.3255]
24 AWG	0.89 ±0.05 [0.035 ±.002 IN]	6-354779-0 [0.3290]



QTY	REV	REV	PART NO	DESCRIPTION	ITEM NO
-	1	1	1339512	PRINT, APPLICATOR LOG SHEET	73
-	1	1	1338705-2	DOCUMENTATION PACKAGE	72
-	-	-	-	-	71
-	-	-	-	-	70
-	-	-	-	-	69
-	-	-	-	-	68
-	1	1	461264-1	PLATE, IDENTIFICATION	67
-	2	2	21017-2	SCR,DRIVE (#2X.19) ID PLATE	66
-	-	-	-	-	65
-	1	1	986950-1	WASHER, FLAT PRECISION	64
-	1	1	3-18031-0	SCR,SKT SET (M6X6) RAM	63
-	1	1	18023-9	SCR,SKT CAP (M4X6) CP DSC	62
-	-	-	-	-	61
-	1	1	18024-7	SCR,BHC (M4X10) ANVIL	60
-	-	-	-	-	59
-	2	2	1-18023-3	SCR,SHC (M4X16) HOLD DOWN	58
-	5	5	18023-9	SCR,SHC (M4X6) STRIP GUIDE	57
-	2	2	9-18023-6	SCR,SHC (M4X14) SLUG BLADE	56
-	-	-	-	-	55
-	2	2	18029-1	NUT,HEX (M3) DRAG	54
-	2	2	986965-1	NUT,HEX SL (M4) DRAG STUD	53
-	2	2	2-18032-2	SCR,SKT SET (M3X10) DRAG	52
-	-	-	-	-	51
-	-	-	-	-	50
-	1	1	18024-3	SCR,BHC (M3X10) CAM	49
-	-	-	-	-	48
-	1	1	1338676-1	CAM, POST-FEED 30 & 40 mm ST	47
-	1	1	1338662-1	APPLICATOR, BASIC (SUBASSY)	46
-	1	1	690191-1	PLUG, NYLON	45
-	1	1	1320998-1	RAM	44
-	1	1	690125-1	WASHER, LAMINATED	43
-	1	1	690124-1	WASHER, RAM	42
-	1	1	2-18024-6	SCREW,BHC (M8X25) CRIMPER	41
-	1	1	23241-1	BALL, STEEL	40
-	1	1	2-22278-7	SPRING, COMPRESSION	39
-	1	1	1320922-5	DISC, INSULATION	38
-	1	1	354777-1	WIRE DISC, PLASTIC	37
-	1	1	22480-5	WASHER, SPRING	36
-	1	1	690212-1	POST, RAM	35
-	-	-	-	-	34
-	-	-	-	-	33
-	9	9	18025-2	WASHER,LOCK (M4) SHEAR BL	32
-	2	2	1-18024-0	SCR,BHC (M4X20) SHEAR PL	31
-	-	-	-	-	30
-	2	2	18024-8	SCR,BHC (M4X12) STRIPPER	29
-	1	1	1-690451-1	SPACER, STRIPPER	28
-	1	1	240639-1	STRIPPER	27
-	-	-	-	-	26
-	2	2	1320906-1	DRAG, STUD	25
-	1	1	1320995-1	STRIP GUIDE	24
-	1	1	240825-2	PLATE, STRIP HOLD DOWN	23
-	2	2	4-22281-1	SPRING, DRAG	22
-	-	-	-	-	21
-	1	1	1338665-1	DRAG, STOCK	20
-	-	-	-	-	19
-	2	2	1338663-3	GUIDE, LOWER STRIP	18
-	4	4	1-18024-8	SCR,BHC (M6X12) STRIP GD PL	17
-	1	1	1338708-1	SPACER, SLUG BLADE	16
-	-	-	-	-	15
-	-	-	-	-	14
-	1	1	23846-1	SPRING, HOLD DOWN	13
-	1	1	240833-1	PLATE, REAR SHEAR	12
-	-	-	-	-	11
-	-	-	-	-	10
-	1	1	690482-5	PLATE, FRONT SHEAR	9
-	1	2	133215-2	ANVIL	8
-	1	1	690474-5	BLADE, SLUG	7
-	1	1	5-455892-0	HOLD DOWN, TERMINAL	6
-	1	1	1-240641-4	SPACER, SLUG BLADE	5
-	1	1	238009-1	SPACER, BLOCK CRIMPER	4
-	1	2	8-456134-0	CRIMPER, INSULATION	3
-	1	1	455888-4	SPACER, CRIMPER	2
-	1	2	3-456404-0	CRIMPER, WIRE	1

- 1. RECOMMENDED SPARE PARTS.
- 2. GREASE RAM, CAM, CAM FOLLOWER AND FEED ROD LIGHTLY.
- 3. LUBRICATE DAILY PER THE APPLICATOR INSTRUCTION SHEET SUPPLIED WITH THE APPLICATOR.



LOC A 66 LEADMAKER OR BENCH G  
 DIST 66 K TERMINATOR BENCH MACHINE  
 AMP 1756 REV 3-92 24-NOV-03 13:28:53 us016926

QTY REQD PER ASSY PARTS LIST

DR M. CLIFFORD 06SEP00 APP F. BACKHURST

NAME END FEED HD-I APPLICATOR MACHINE REF HD-I APPL

SCALE 1:1 DWG NO 1339512 SHEET 1 of 1 REV B

CUSTOMER AND ASSEMBLY DRAWING

CUSTOMER DRAWING

DRAWING NUMBER - 1339512 SHEET 2 OF 2 REV. B1