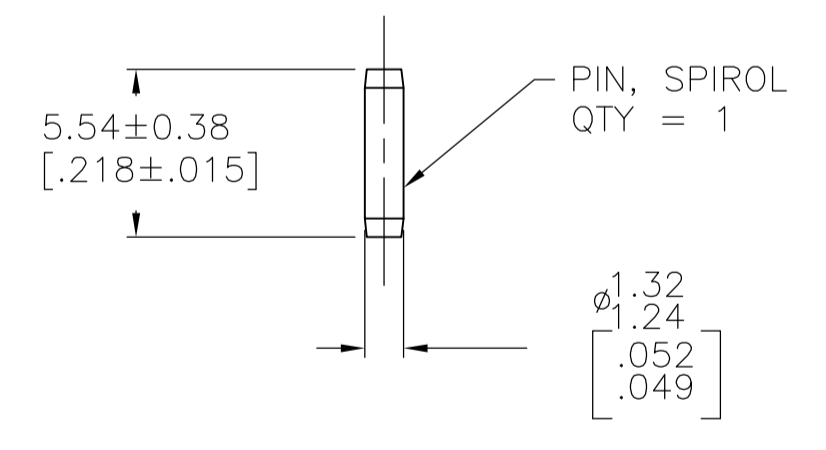
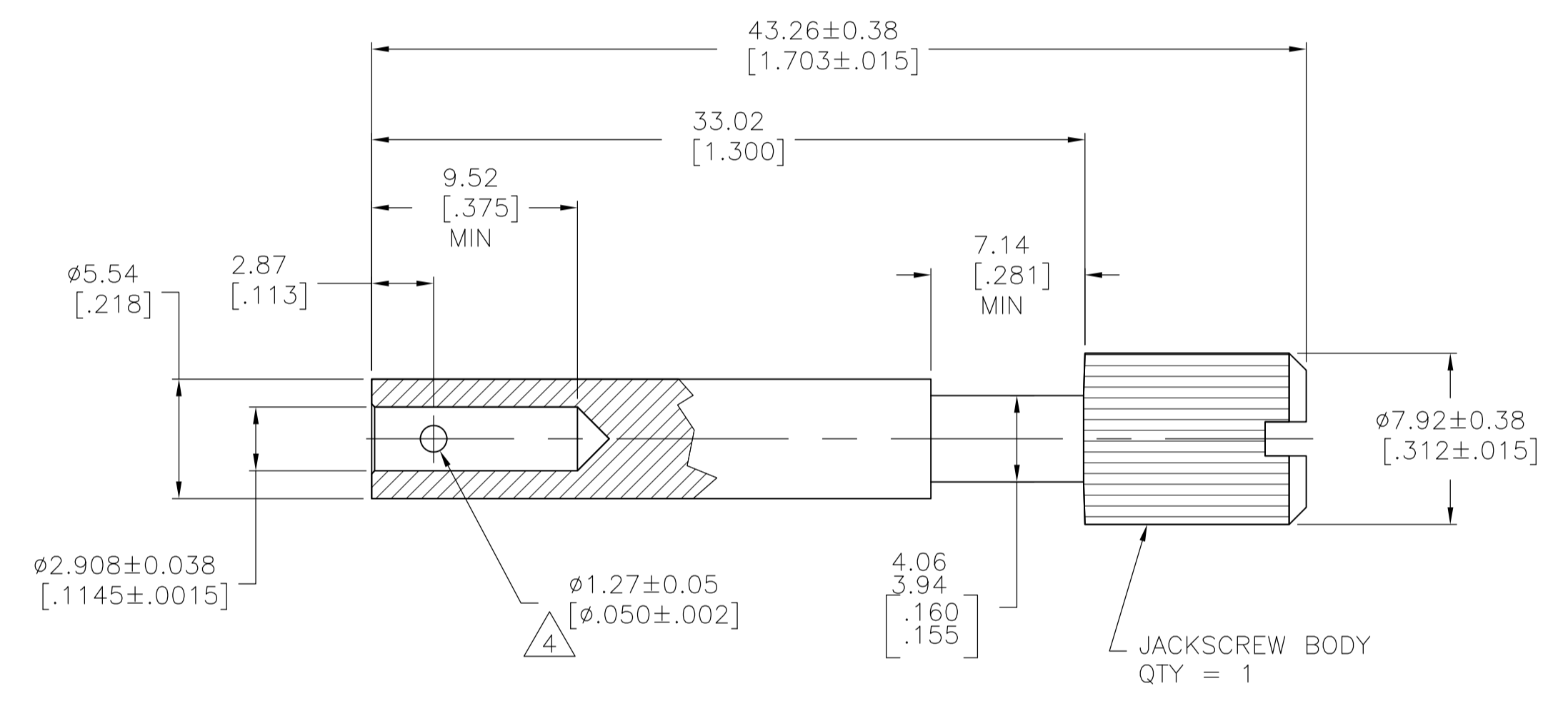
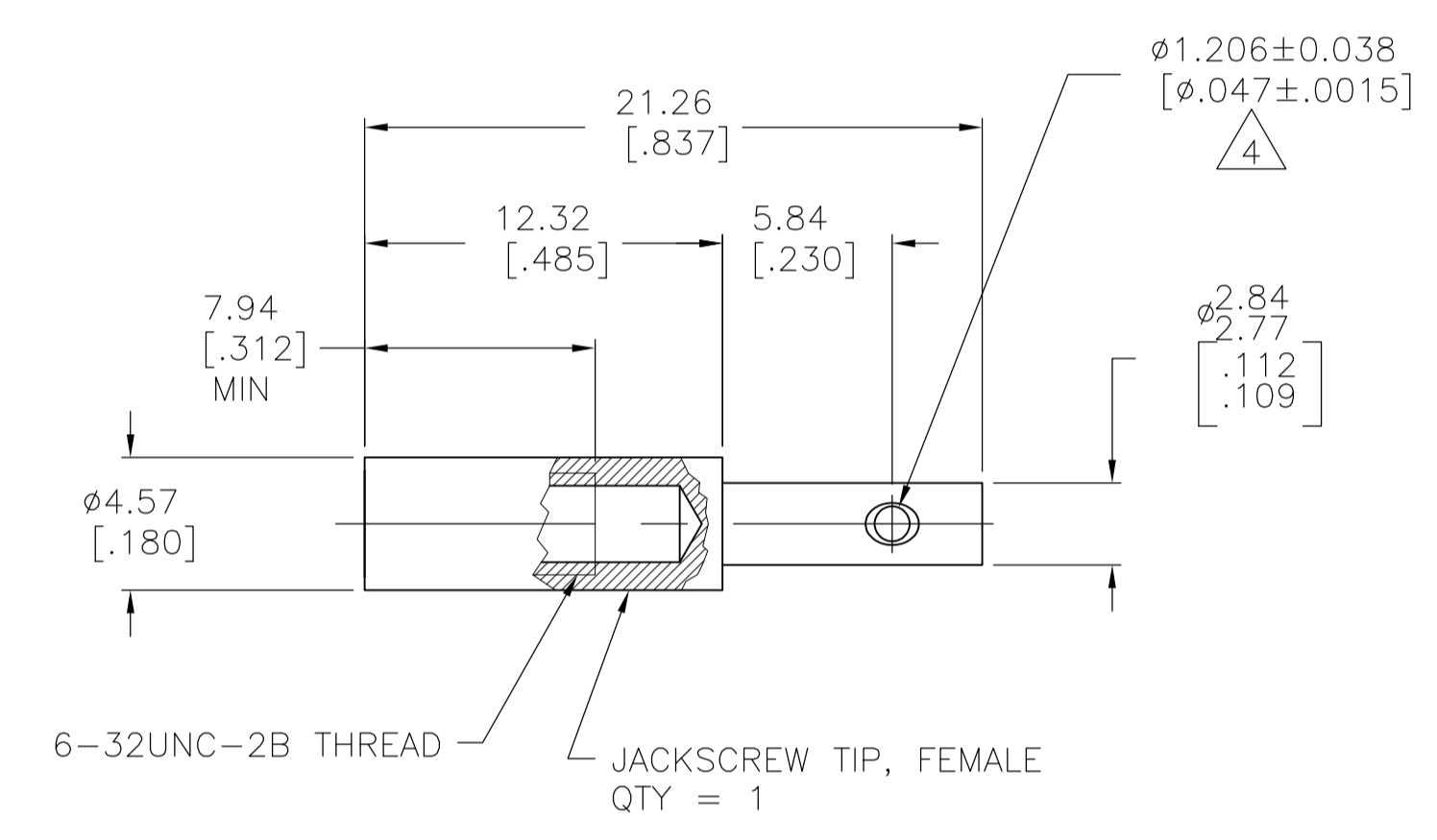


- 1 ZINC.
- 2 STAINLESS STEEL.
- 3 TO ASSEMBLE JACKSCREW REFER TO INSTRUCTION SHEET #1189.
- 4 HOLE CENTRALLY LOCATED WITHIN  $\pm 0.07$  [.003] OF THE 5.54 [.218] DIA AND THE 2.77/2.84 [.109/.112] DIA CENTER LINES.
- 5 CHROMATE CONVERSION, CLEAR.
- 7 NON-HEXAVALENT CHROMATE COATING ON JACKSCREW BODY.
- 8 SPECIAL PACKAGING - ONE UNASSEMBLED UNIT PER BAG



8	7	201414-5
7	7	201414-4
7	7	201414-1
NOTES		PART NUMBER

THIS DRAWING IS A CONTROLLED DOCUMENT.		DIN K.FOLTZ 10/18/94	Tyco Electronics Corporation Harrisburg, PA 17105-3608	
DIMENSIONS: mm [INCHES]		CHK R.STONE 11/07/94	NAME	
TOLERANCES UNLESS OTHERWISE SPECIFIED:		PRODUCT SPEC		
0 PLC ± -	1 PLC ± -	APPLICATION SPEC		
2 PLC ± 0.13 [.005]	3 PLC ± -	SIZE A1	CAGE CODE 00779	DRAWING NO. 201414
4 PLC ± -	ANGLES ± -	WEIGHT	RESTRICTED TO	
MATERIAL JACKSCREW BODY: 1	FINISH JACKSCREW BODY: 2	CUSTOMER DRAWING		
JACKSCREW TIP: 3	PIN: PASSIVATED	SCALE 4:1	SHEET 1 OF 1	REV M