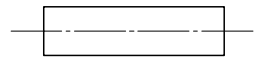
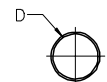


	12	11	10	9	8	7	6	5	4	3	2	19267
J	BLACK MATERIAL NUMBER ENGINEERING NUMBER	WHITE MATERIAL NUMBER ENGINEERING NUMBER	RED MATERIAL NUMBER ENGINEERING NUMBER	BLUE MATERIAL NUMBER ENGINEERING NUMBER	CLEAR MATERIAL NUMBER ENGINEERING NUMBER	YELLOW MATERIAL NUMBER ENGINEERING NUMBER	MIN EXPANDED ID "D"	MAX RECOVERED ID	RECOVERED WALL THK REF	LENGTH FEET/METERS		J
I	192670015 PF-3/64-1BK	192670016 PF-3/64-1WT	192670017 PF-3/64-1RD	192670018 PF-3/64-1BL	192670019 PF-3/64-1CL	192670020 PF-3/64-1YL	.046/1.17	.023/0.58	.018/0.46	4.0/1.2	I	
H	192670045 PF-1/16-1BK	192670046 PF-1/16-1WT	192670047 PF-1/16-1RD	192670048 PF-1/16-1BL	192670049 PF-1/16-1CL	192670050 PF-1/16-1YL	.063/1.60	.031/0.79	.018/0.46		H	
	192670075 PF-3/32-1BK	192670076 PF-3/32-1WT	192670077 PF-3/32-1RD	192670078 PF-3/32-1BL	192670079 PF-3/32-1CL	192670080 PF-3/32-1YL	.093/2.36	.046/1.17	.020/0.51			
	192670105 PF-1/8-1BK	192670106 PF-1/8-1WT	192670107 PF-1/8-1RD	192670108 PF-1/8-1BL	192670109 PF-1/8-1CL	192670110 PF-1/8-1YL	.125/3.18	.062/1.57	.020/0.51			
	192670135 PF-3/16-1BK	192670136 PF-3/16-1WT	192670137 PF-3/16-1RD	192670138 PF-3/16-1BL	192670139 PF-3/16-1CL	192670140 PF-3/16-1YL	.187/4.75	.093/2.36	.020/0.51			
	192670165 PF-1/4-1BK	192670166 PF-1/4-1WT	192670167 PF-1/4-1RD	192670168 PF-1/4-1BL	192670169 PF-1/4-1CL	192670170 PF-1/4-1YL	.250/6.35	.125/3.18	.025/0.64			
	192670195 PF-3/8-1BK	192670196 PF-3/8-1WT	192670197 PF-3/8-1RD	192670198 PF-3/8-1BL	192670199 PF-3/8-1CL	192670200 PF-3/8-1YL	.375/9.53	.187/4.75	.025/0.64			
	192670225 PF-1/2-1BK	192670226 PF-1/2-1WT	192670227 PF-1/2-1RD	192670228 PF-1/2-1BL	192670229 PF-1/2-1CL	192670230 PF-1/2-1YL	.500/12.70	.250/6.35	.025/0.64			
	192670255 PF-3/4-1BK	192670256 PF-3/4-1WT	192670257 PF-3/4-1RD	192670258 PF-3/4-1BL	192670259 PF-3/4-1CL	192670260 PF-3/4-1YL	.750/19.05	.375/9.53	.030/0.76			
	192670285 PF-1-1BK	192670286 PF-1-1WT	192670287 PF-1-1RD	192670288 PF-1-1BL	192670289 PF-1-1CL	192670290 PF-1-1YL	1.000/25.40	.500/12.70	.035/0.89			
	192670315 PF-1-1/2-1BK	192670316 PF-1-1/2-1WT	192670317 PF-1-1/2-1RD	192670318 PF-1-1/2-1BL	192670319 PF-1-1/2-1CL	192670320 PF-1-1/2-1YL	1.500/38.10	.750/19.05	.040/1.02			
G	192670345 PF-2-1BK	192670346 PF-2-1WT	192670347 PF-2-1RD	192670348 PF-2-1BL	192670349 PF-2-1CL	192670350 PF-2-1YL	2.000/50.80	1.000/25.40	.045/1.14		1000/304.8 SPOOL	G
	192670375 PF-3-1BK	192670376 PF-3-1WT	192670377 PF-3-1RD	192670378 PF-3-1BL	192670379 PF-3-1CL	192670380 PF-3-1YL	3.000/76.20	1.500/38.10	.050/1.27			
	192670405 PF-4-1BK				192670409 PF-3-1CL		4.000/101.60	2.000/50.80	.055/1.40			
	192670033 PF-3/64-4BK	192670034 PF-3/64-4WT	192670035 PF-3/64-4RD	192670036 PF-3/64-4BL	192670037 PF-3/64-4CL	192670038 PF-3/64-4YL	.046/1.17	.023/0.58	.018/0.46			
	192670063 PF-1/16-4BK	192670064 PF-1/16-4WT	192670065 PF-1/16-4RD	192670066 PF-1/16-4BL	192670067 PF-1/16-4CL	192670068 PF-1/16-4YL	.063/1.60	.031/0.79	.018/0.46			
	192670093 PF-3/32-4BK	192670094 PF-3/32-4WT	192670095 PF-3/32-4RD	192670096 PF-3/32-4BL	192670097 PF-3/32-4CL	192670098 PF-3/32-4YL	.093/2.36	.046/1.17	.020/0.51			
	192670123 PF-1/8-4BK	192670124 PF-1/8-4WT	192670125 PF-1/8-4RD	192670126 PF-1/8-4BL	192670127 PF-1/8-4CL	192670128 PF-1/8-4YL	.125/3.18	.062/1.57	.020/0.51			
	192670153 PF-3/16-4BK	192670154 PF-3/16-4WT	192670155 PF-3/16-4RD	192670156 PF-3/16-4BL	192670157 PF-3/16-4CL	192670158 PF-3/16-4YL	.187/4.75	.093/2.36	.020/0.51			
	192670183 PF-1/4-4BK	192670184 PF-1/4-4WT	192670185 PF-1/4-4RD	192670186 PF-1/4-4BL	192670187 PF-1/4-4CL	192670188 PF-1/4-4YL	.250/6.35	.125/3.18	.025/0.64			
	192670213 PF-3/8-4BK	192670214 PF-3/8-4WT	192670215 PF-3/8-4RD	192670216 PF-3/8-4BL	192670217 PF-3/8-4CL	192670218 PF-3/8-4YL	.375/9.53	.187/4.75	.025/0.64			
	192670243 PF-1/2-4BK	192670244 PF-1/2-4WT	192670245 PF-1/2-4RD	192670246 PF-3/8-4BL	192670247 PF-1/2-4CL	192670248 PF-1/2-4YL	.500/12.70	.250/6.35	.025/0.64			
F	192670273 PF-3/4-4BK	192670274 PF-3/4-4WT	192670275 PF-3/4-4RD	192670276 PF-1/2-4BL	192670277 PF-3/4-4CL	192670278 PF-3/4-4YL	.750/19.05	.375/9.53	.030/0.76			
	192670303 PF-1-4BK	192670304 PF-1-4WT	192670305 PF-1-4RD	192670306 PF-3/4-4BL	192670307 PF-1-4CL	192670308 PF-1-4YL	1.000/25.40	.500/12.70	.035/0.89			
	192670333 PF-1-1/2-4BK	192670334 PF-1-1/2-4WT	192670335 PF-1-1/2-4RD	192670336 PF-1-4BL	192670337 PF-1-1/2-4CL	192670338 PF-1-1/2-4YL	1.500/38.10	.750/19.05	.040/1.02			
	192670363 PF-2-4BK	192670364 PF-2-4WT	192670365 PF-2-4RD	192670366 PF-1-1/2-4BL	192670367 PF-2-4CL	192670368 PF-2-4YL	2.000/50.80	1.000/25.40	.045/1.14			
	192670393 PF-3-4BK	192670394 PF-3-4WT	192670395 PF-3-4RD	192670396 PF-2-4BL	192670397 PF-3-4CL	192670398 PF-3-4YL	3.000/76.20	1.500/38.10	.050/1.27			
	192670423 PF-4-4BK				192670427 PF-4-4CL		4.000/101.60	2.000/50.80	.055/1.40			
E	192670039 PF-3/64-5BK	192670040 PF-3/64-5WT	192670041 PF-3/64-5RD	192670042 PF-3/64-5BL	192670043 PF-3/64-5CL	192670044 PF-3/64-5YL	.046/1.17	.023/0.58	.018/0.46	100/30.4 SPOOL	E	
	192670069 PF-1/16-5BK	192670070 PF-1/16-5WT	192670071 PF-1/16-5RD	192670072 PF-1/16-5BL	192670073 PF-1/16-5CL	192670074 PF-1/16-5YL	.063/1.60	.031/0.79	.018/0.46			
	192670099 PF-3/32-5BK	192670100 PF-3/32-5WT	192670101 PF-3/32-5RD	192670102 PF-3/32-5BL	192670103 PF-3/32-5CL	192670104 PF-3/32-5YL	.093/2.36	.046/1.17	.020/0.51			
	192670129 PF-1/8-5BK	192670130 PF-1/8-5WT	192670131 PF-1/8-5RD	192670132 PF-1/8-5BL	192670133 PF-1/8-5CL	192670134 PF-1/8-5YL	.125/3.18	.062/1.57	.020/0.51			
	192670159 PF-3/16-5BK	192670160 PF-3/16-5WT	192670161 PF-3/16-5RD	192670162 PF-3/16-5BL	192670163 PF-3/16-5CL	192670164 PF-3/16-5YL	.187/4.75	.093/2.36	.020/0.51			
	192670189 PF-1/4-5BK	192670190 PF-1/4-5WT	192670191 PF-1/4-5RD	192670192 PF-1/4-5BL	192670193 PF-1/4-5CL	192670194 PF-1/4-5YL	.250/6.35	.125/3.18	.025/0.64			
	192670219 PF-3/8-5BK	192670220 PF-3/8-5WT	192670221 PF-3/8-5RD	192670222 PF-3/8-5BL	192670223 PF-3/8-5CL	192670224 PF-3/8-5YL	.375/9.53	.187/4.75	.025/0.64			
	192670249 PF-1/2-5BK	192670250 PF-1/2-5WT	192670251 PF-1/2-5RD	192670252 PF-1/2-5BL	192670253 PF-1/2-5CL	192670254 PF-1/2-5YL	.500/12.70	.250/6.35	.025/0.64			
	192670279 PF-3/4-5BK	192670280 PF-3/4-5WT	192670281 PF-3/4-5RD	192670282 PF-3/4-5BL	192670283 PF-3/4-5CL	192670284 PF-3/4-5YL	.750/19.05	.375/9.53	.030/0.76			
D	192670309 PF-1-5BK	192670310 PF-1-5WT	192670311 PF-1-5RD	192670312 PF-1-5BL	192670313 PF-1-5CL	192670314 PF-1-5YL	1.000/25.40	.500/12.70	.035/0.89			
	192670339 PF-1-1/2-5BK	192670340 PF-1-1/2-5WT	192670341 PF-1-1/2-5RD	192670342 PF-1-1/2-5BL	192670343 PF-1-1/2-5CL	192670344 PF-1-1/2-5YL	1.500/38.10	.750/19.05	.040/1.02			
	192670369 PF-2-5BK	192670370 PF-2-5WT	192670371 PF-2-5RD	192670372 PF-2-5BL	192670373 PF-2-5CL	192670374 PF-2-5YL	2.000/50.80	1.000/25.40	.045/1.14			
	192670399 PF-3-5BK	192670400 PF-3-5WT	192670401 PF-3-5RD	192670402 PF-3-5BL	192670403 PF-3-5CL	192670404 PF-3-5YL	3.000/76.20	1.500/38.10	.050/1.27			
	192670429 PF-4-5BK				192670433 PF-4-5CL		4.000/101.60	2.000/50.80	.055/1.40			



SALES DRAWING

- NOTES:  
 1. MATERIAL: POLYOLEFIN  
 2. OTHER CUT LENGTHS ARE AVAILABLE.

NEW RELEASE EC NO: ETC2005-0024 DRAWN: BENDERLE 2004/08/04 CHK'D: R. DEROSS 2004/08/04 APPR: R. DEROSS 2004/08/04	QUALITY SYMBOLS ▽ 0 ◇ 0	GENERAL TOLERANCES (UNLESS SPECIFIED)		SCALE 1:1	DESIGN UNITS INCH	THIRD ANGLE PROJECTION	REVISE ON CAD ONLY		
				DIMENSION STYLE IN/MM					
		4 PLACES ± --- ± ---		DRAWN BY DATE BENDERLE 2004/08/04		TITLE PERMA-FIT POLYOLEFIN HEAT SHRINK TUBING 19267 SERIES	MATERIAL NO. SEE CHART	DOCUMENT NO. SD-19267-001	
		3 PLACES ± --- ± ---		CHECKED BY DATE R DEROSS 2004/08/04					SHEET NO. 1 OF 1
		2 PLACES ± --- ± ---		APPROVED BY DATE R DEROSS 2004/08/04					
1 PLACE ± --- ± ---		DRAFT WHERE APPLICABLE							
ANGULAR ± ---°		MUST REMAIN WITHIN DIMENSIONS							

11	10	9	8	7	6	5	4	3	2	1
----	----	---	---	---	---	---	---	---	---	---