

5

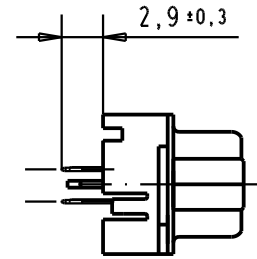
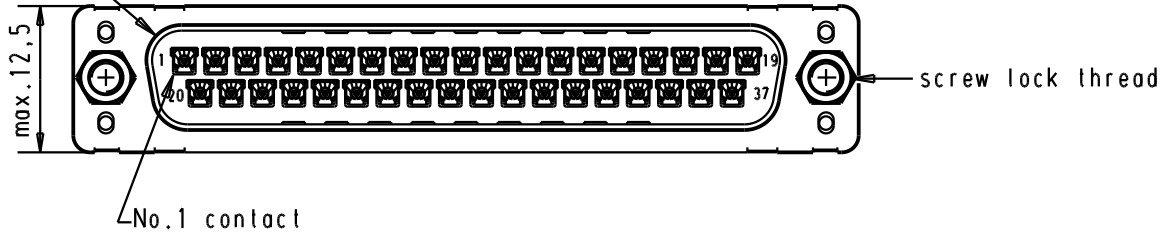
4

3

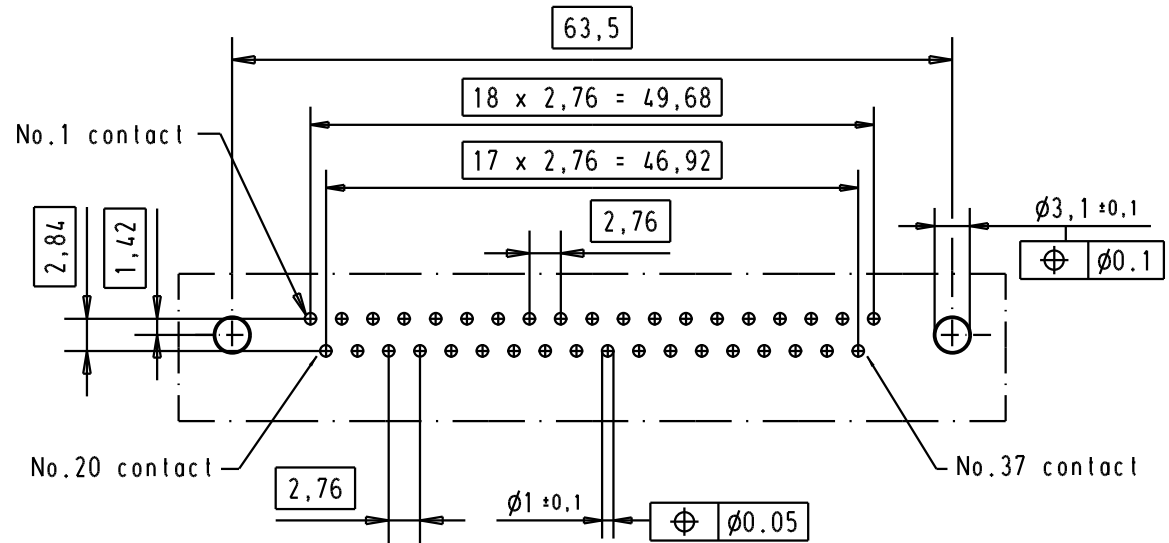
2

1

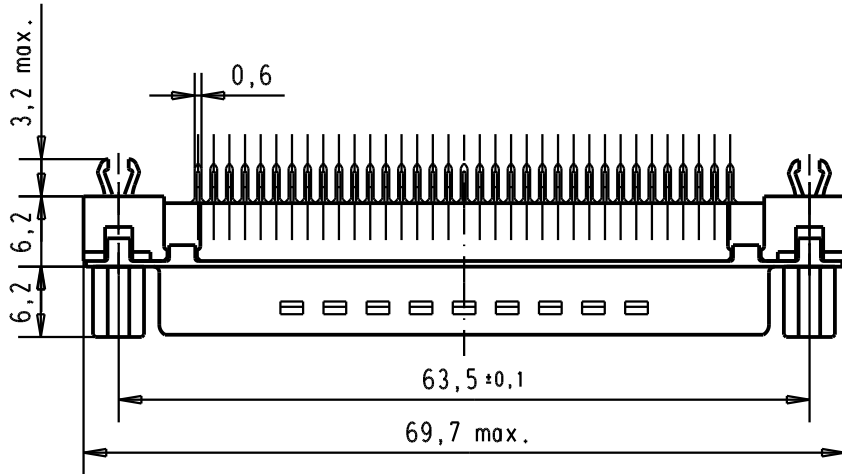
Mating face according to : MIL-C-24308 / DIN 41652 / CECC 75301-802





Printed board layout component side



Connector retention and insertion forces on the PCB = 25 / 80 newtons



A	09 65 469 3733	M3	1							 <p>All Dim. in mm Orig. Size DIN A 4</p>	D-Sub, High temperature, 37 poles, male, straight, with solder pins 2.9, screw lock and grounding board lock	Maßstab/ Scale 1.5:1
	09 65 469 6733	M3	2				Det.	04/09/02	YT			
	09 65 469 7733	M3	3				Insp.					
	09 65 469 3713	4-40 UNC	1				Stand.					
	09 65 469 6713	4-40 UNC	2	31892	22/04/04	JH	HARTING EURL F-95972 Paris				TB 09 65 469 x7x3	Blatt/ Page 1/
	09 65 469 7713	4-40 UNC	3	31084	04/09/02	YT						
	Part number	Screw lock thread	Performance level	Mod.	Dat.	Name				Sub.		