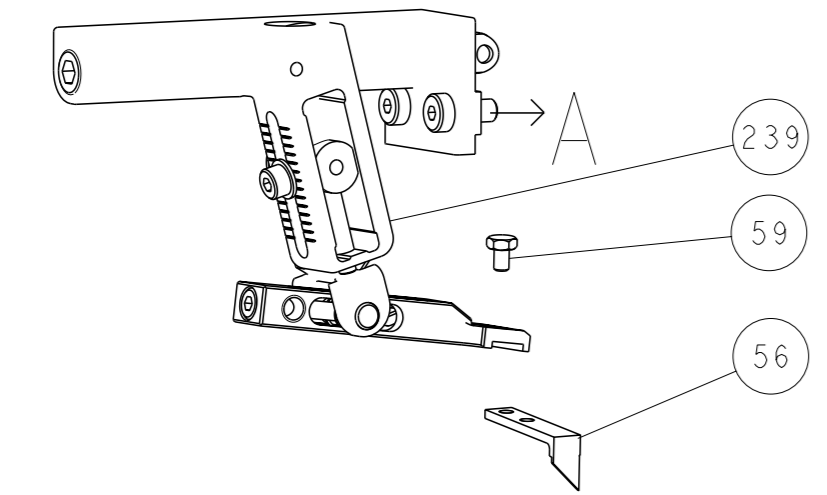


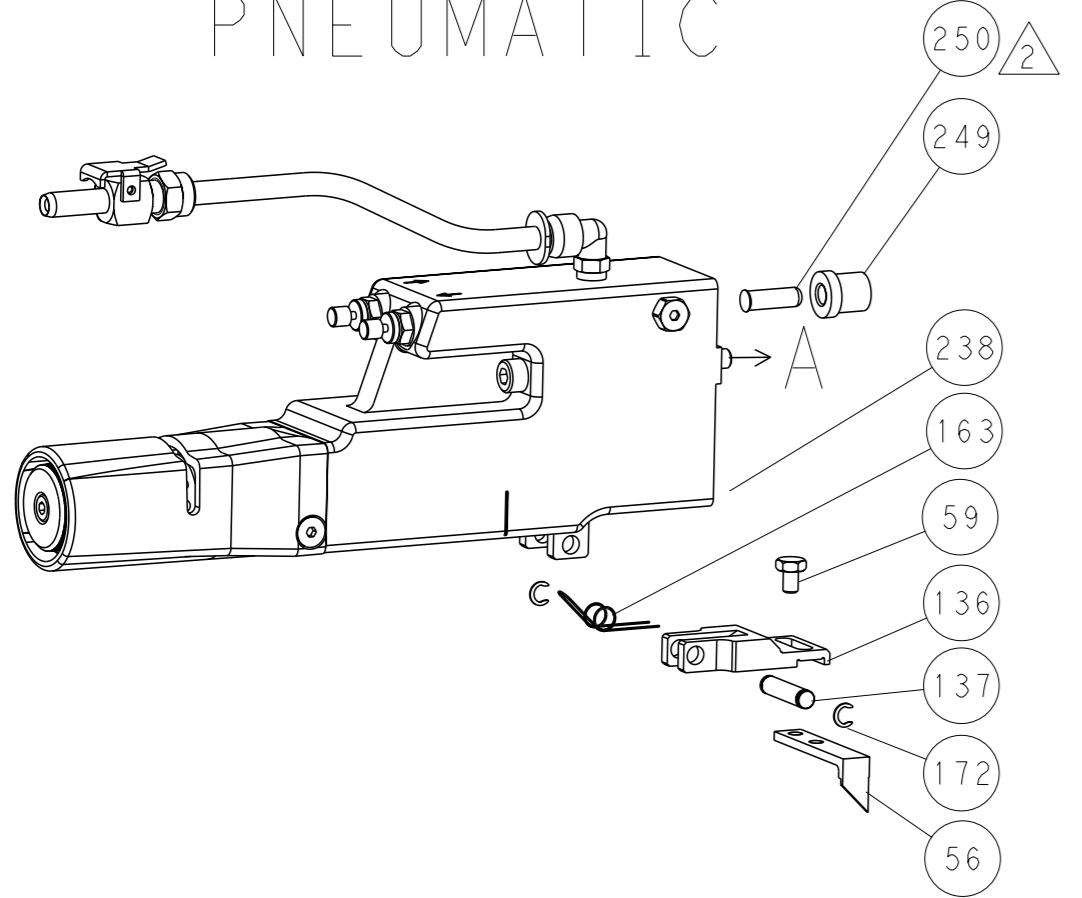


LOC	DIST	REV	DESCRIPTION	DATE	OWN	APVD
A	66		SEE SHEET 1			

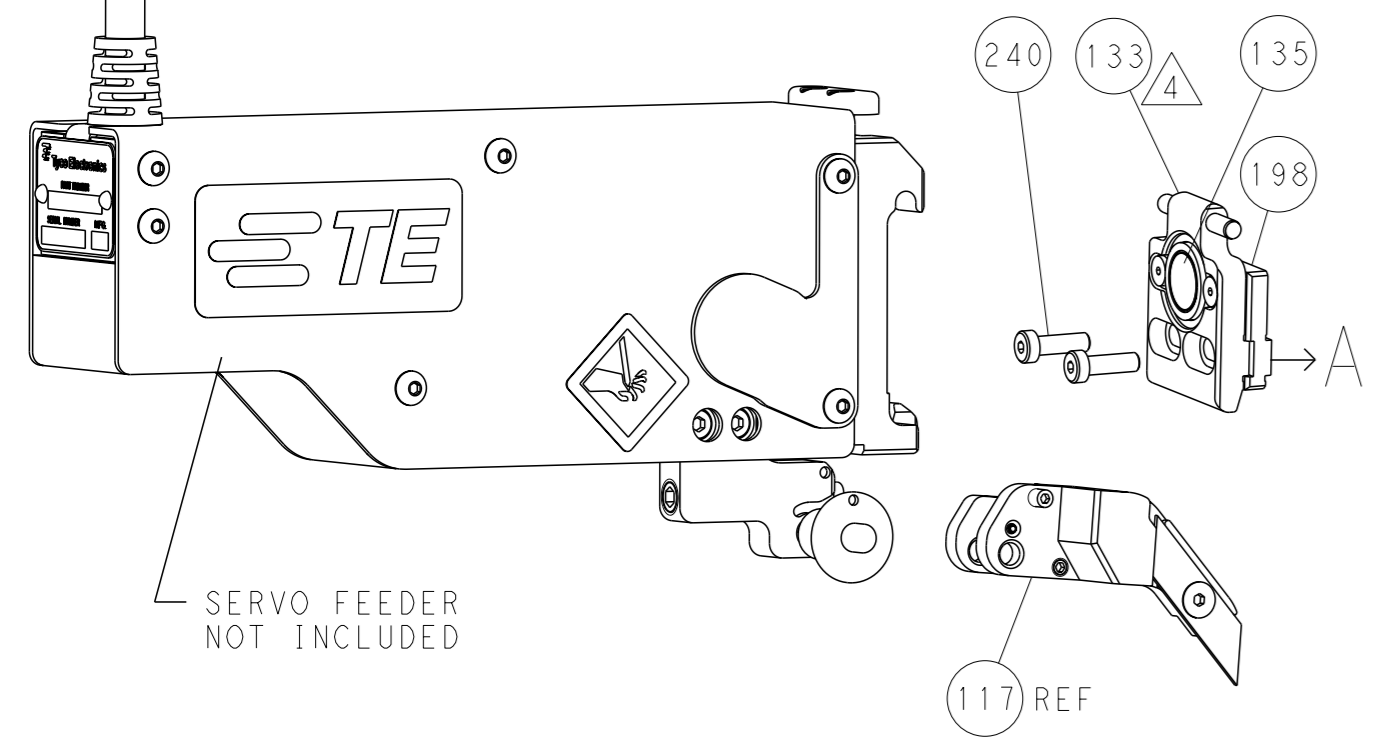
### FEED TYPE MECHANICAL



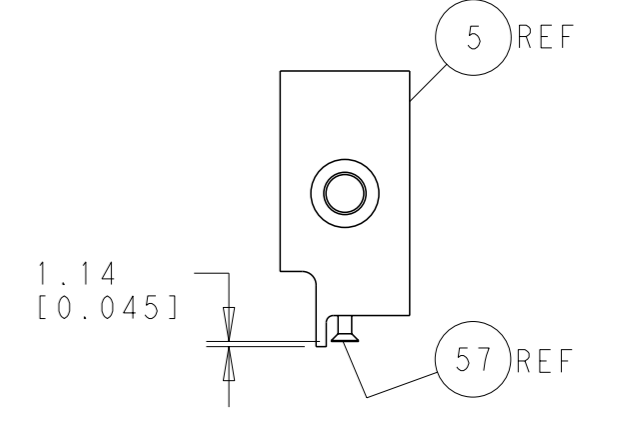
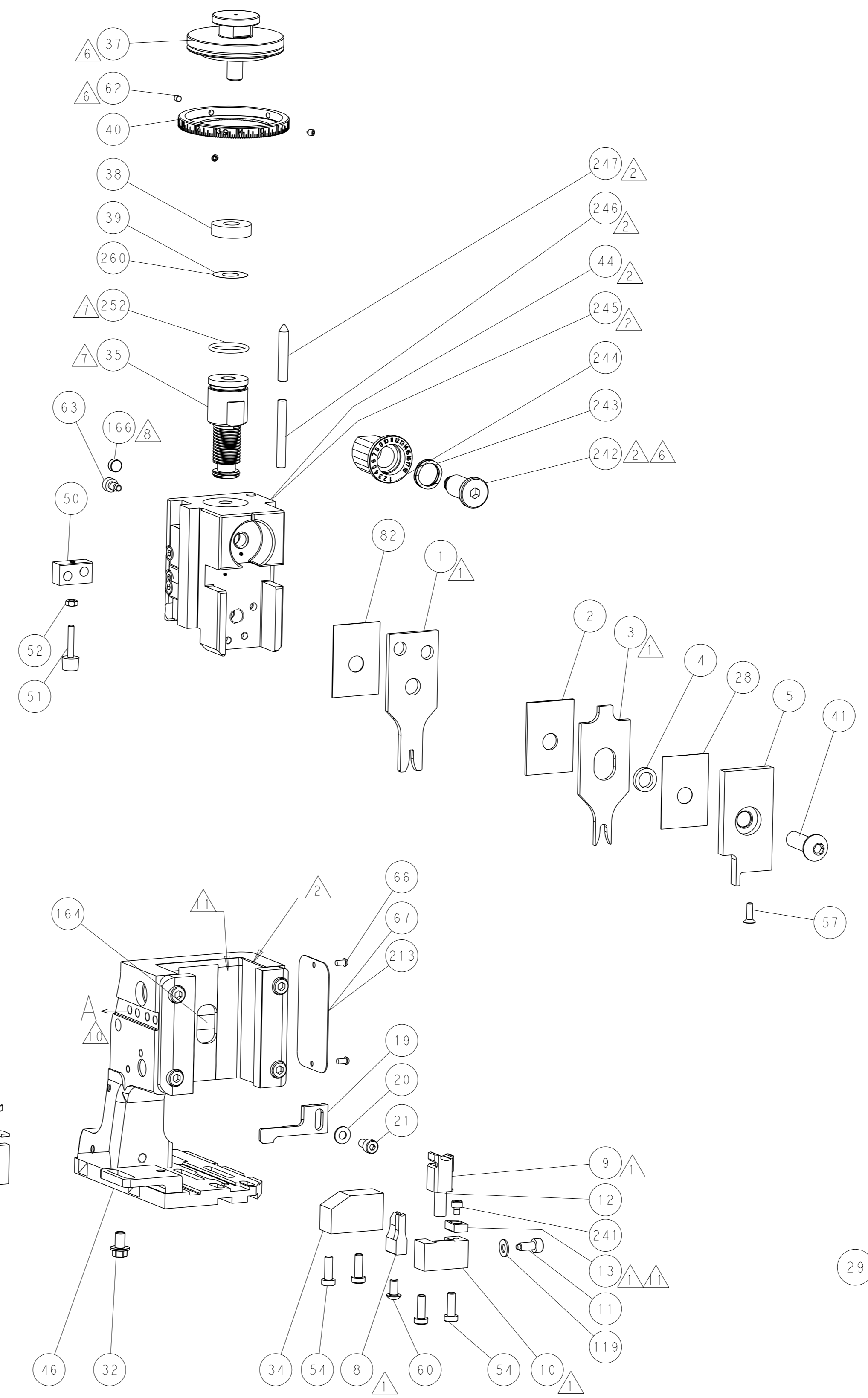
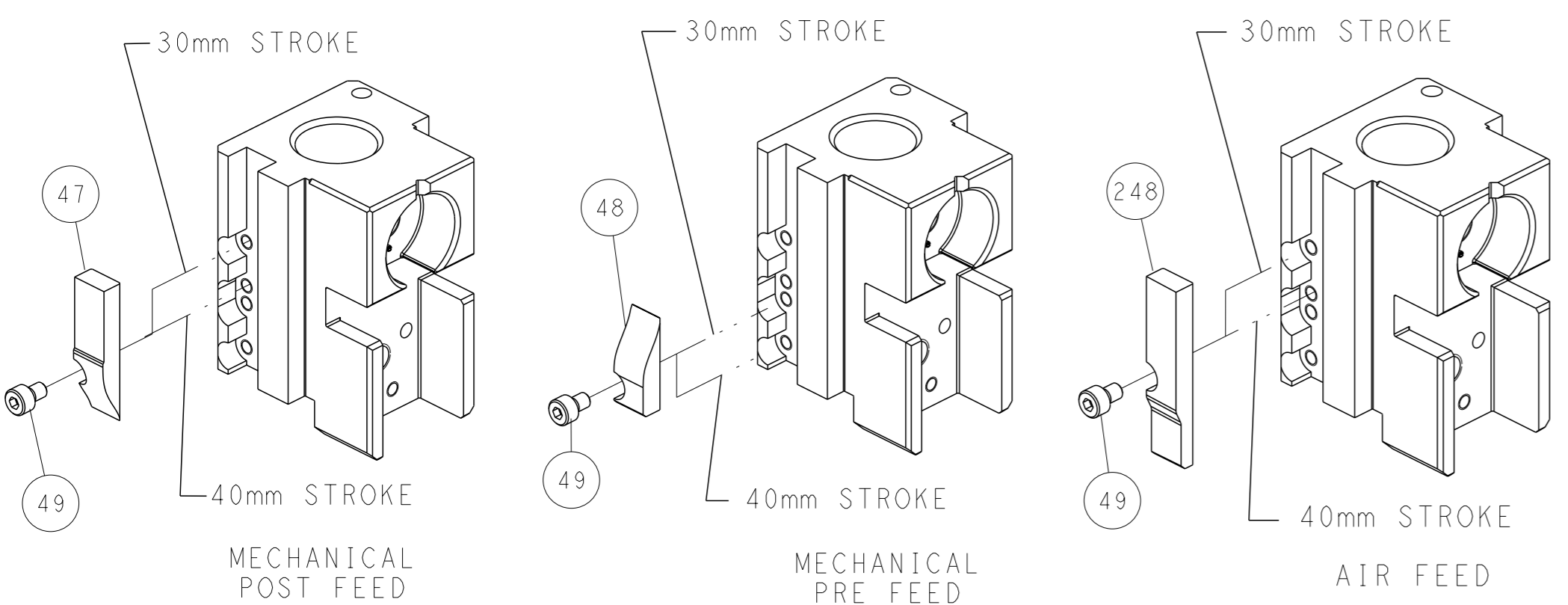
### PNEUMATIC



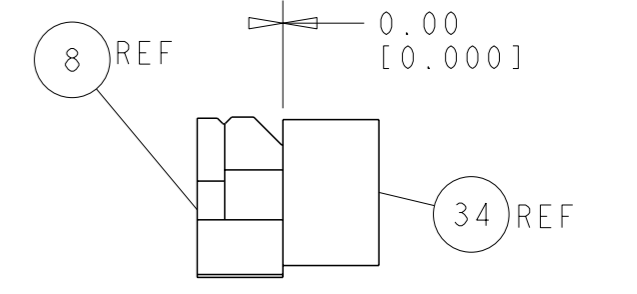
### SERVO LATCH PLATE



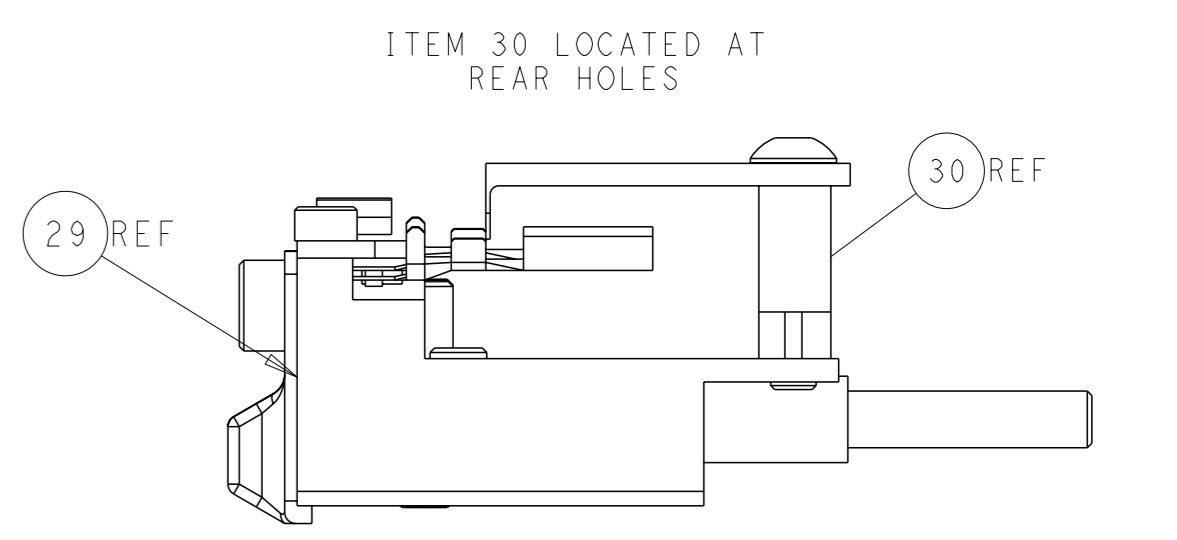
### CAM POSITIONS



SHEAR DEPRESSOR DETAIL



TERMINAL SUPPORT LOCATION



FEED TRACK POSITION GUIDE BY WIRE BARREL

**ATLANTIC VERSION**  
 Shown on sheets 1 of 4 & 2 of 4  
 (Pacific version shown on sheets 3 of 4 & 4 of 4)

DIMENSIONS: mm 		TOLERANCES UNLESS OTHERWISE SPECIFIED: 0 PLC ±.5 1 PLC ±0.5 2 PLC ±0.13 3 PLC ±0.013 4 PLC ±0.001 ANGLES FINISH ±.		DWG Y. YIN 06NOV2013 CHK G. BAILEY 06NOV2013 APVD U. GUO 06NOV2013 PRODUCT SPEC APPLICATION SPEC WEIGHT Customer Accessible Production Drawing		NAME Ocean Side Feed Applicator SIZE CAGE CODE DRAWING NO. A1 00779 ©=2266142 SCALE 1:2 SHEET 2 of 4 REV A1		TE Connectivity Harrisburg, PA 17105-3608	
--------------------	--	--	--	--	--	---	--	--	--

APPLICATOR STYLE CONVERSION CHART table with columns for Part Number, Revision, Description, Feed Type, Convert To, and Part Numbers Required.

APPLICATOR DATA table with columns for Crimp, Size, Type, Wire, Insul, and Applicator Instructions.

TERMINAL DATA: MFR TERM GH/LEAR LEAR CRIMP SPECIFICATION table with columns for TE Terminal, GWH/LEAR Terminal, TE Seal, and GWH/LEAR Seal.

WIRE SIZE table with columns for Wire Size, Crimp Height mm [INCH], and Crimp Height Reference Setting.

- RECOMMENDED SPARE PARTS
GREASE BEARING SURFACES LIGHTLY
LUBRICATE DAILY PER THE APPLICATOR INSTRUCTION SHEET SUPPLIED WITH THE APPLICATOR.
APPLICATOR SPECIFIC DATA TO BE ENTERED INTO BLANK MEMORY CHIP AT ASSEMBLY...

\*WARNING ON INSTALLATION, SET WIRE DISC, ITEM 40 TO LARGEST WIRE SIZE SETTING. USE OF SETTINGS BELOW MINIMUM REQUIRED CRIMP HEIGHT SETTING WILL CAUSE DAMAGE TO CRIMP TOOLING.

Table with columns for Part No, Description, and Item No, listing various components like Fine Adjust Head ASM, Push Rod, Bushing, etc.

PACIFIC VERSION Shown on sheets 3 of 4 & 4 of 4 (Atlantic version shown on sheets 1 of 4 & 2 of 4)

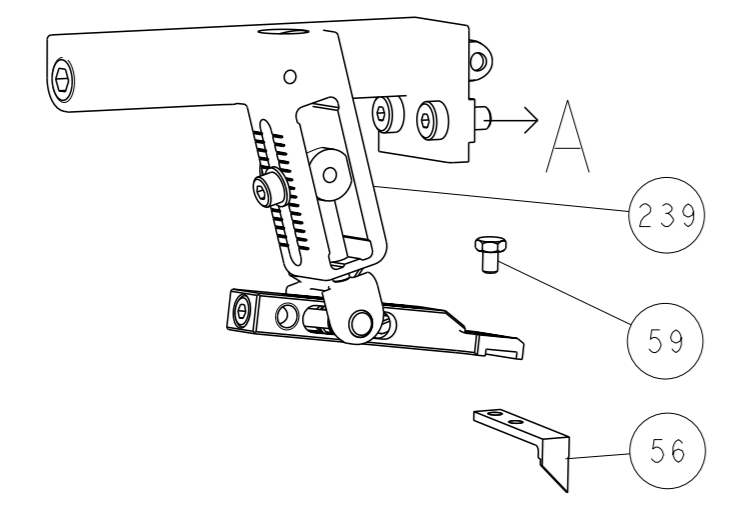
REVISIONS table with columns for P, LTR, DESCRIPTION, DATE, DWN, and APVD.

Main parts list table with columns for Part No, Description, and Item No, listing components like SHCS, MECHANICAL FEED ASSEMBLY, AIR FEED MODULE, etc.

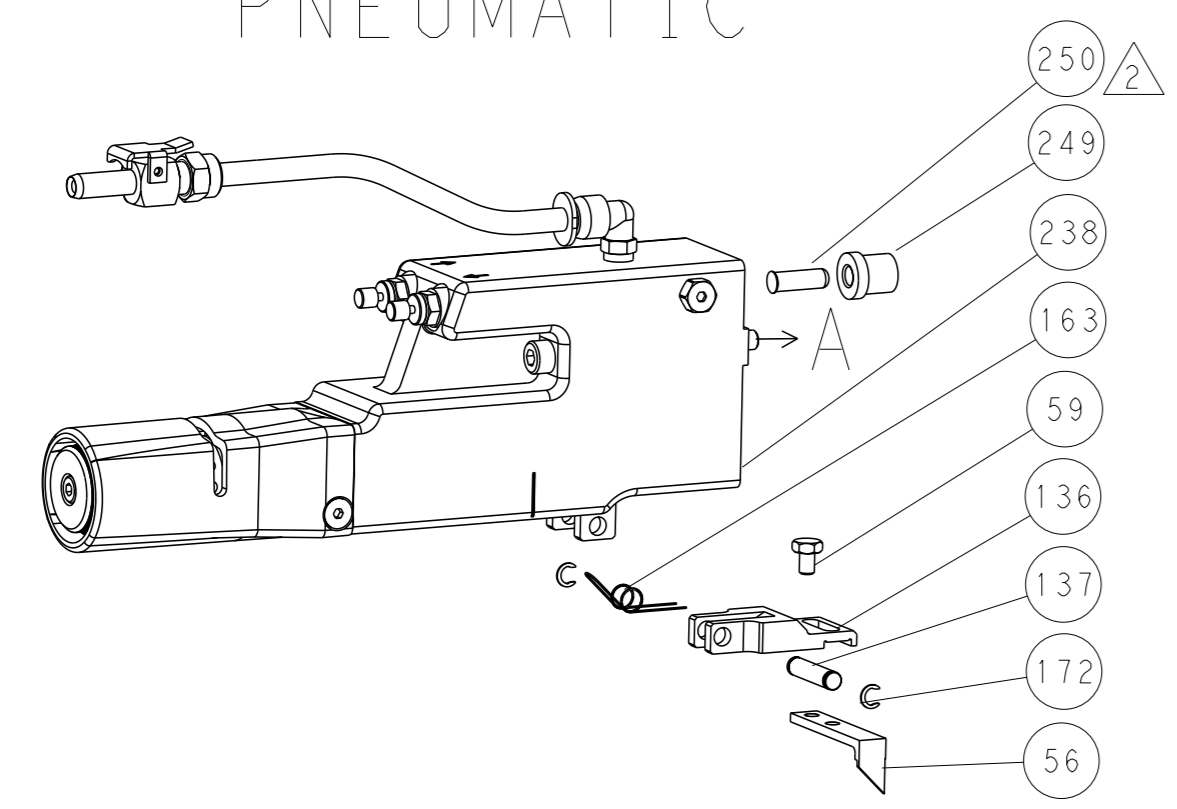
Technical drawing details including dimensions, tolerances, materials, and customer information for the Pacific Version applicator.

LOC	DIST	REVISIONS				
A	66	REV	DESCRIPTION	DATE	OWN	APVD
		-	SEE SHEET 1	-	-	-

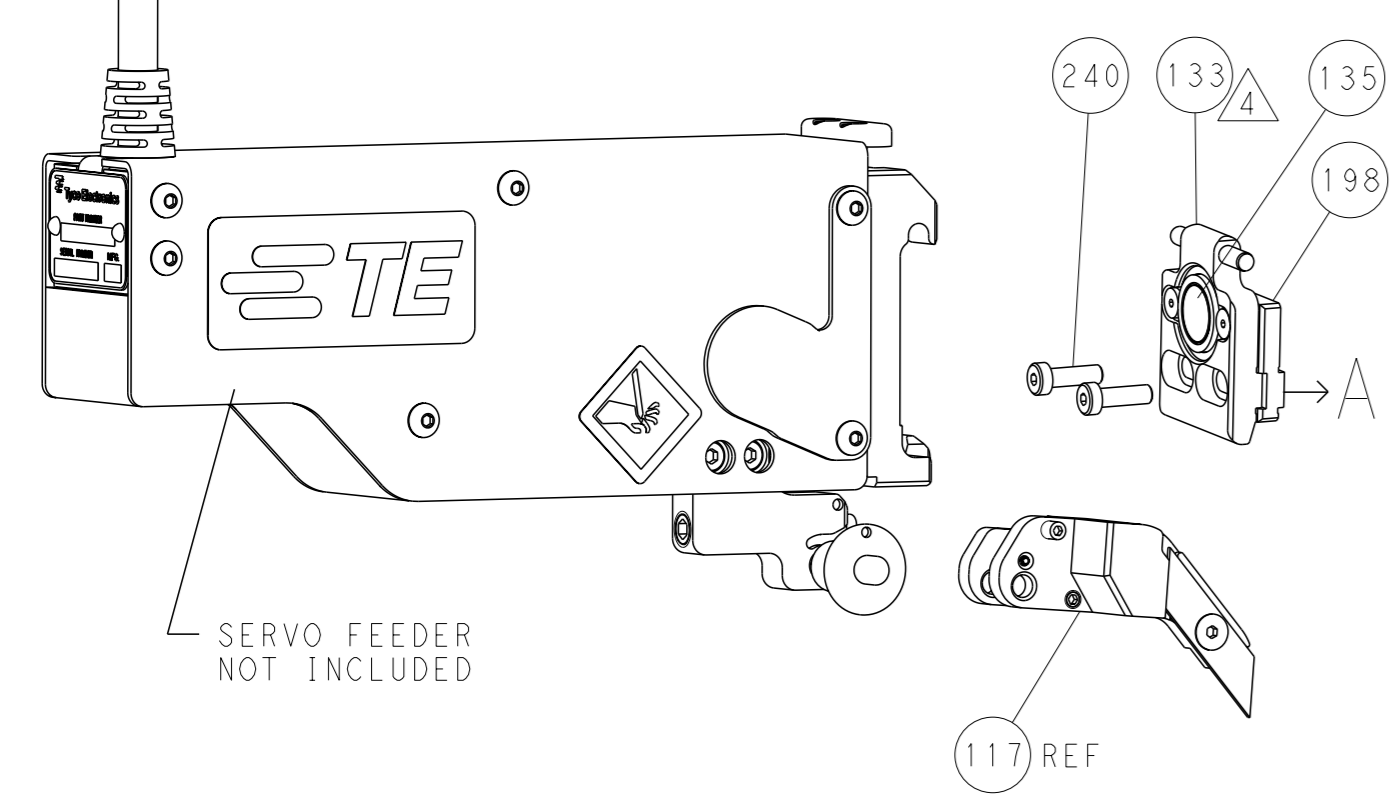
# FEED TYPE MECHANICAL



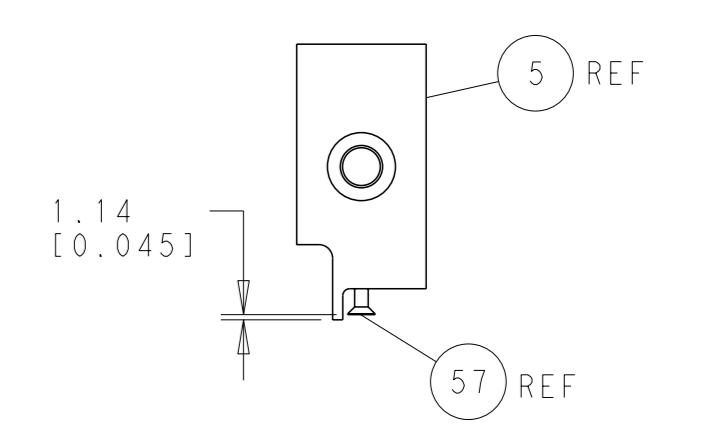
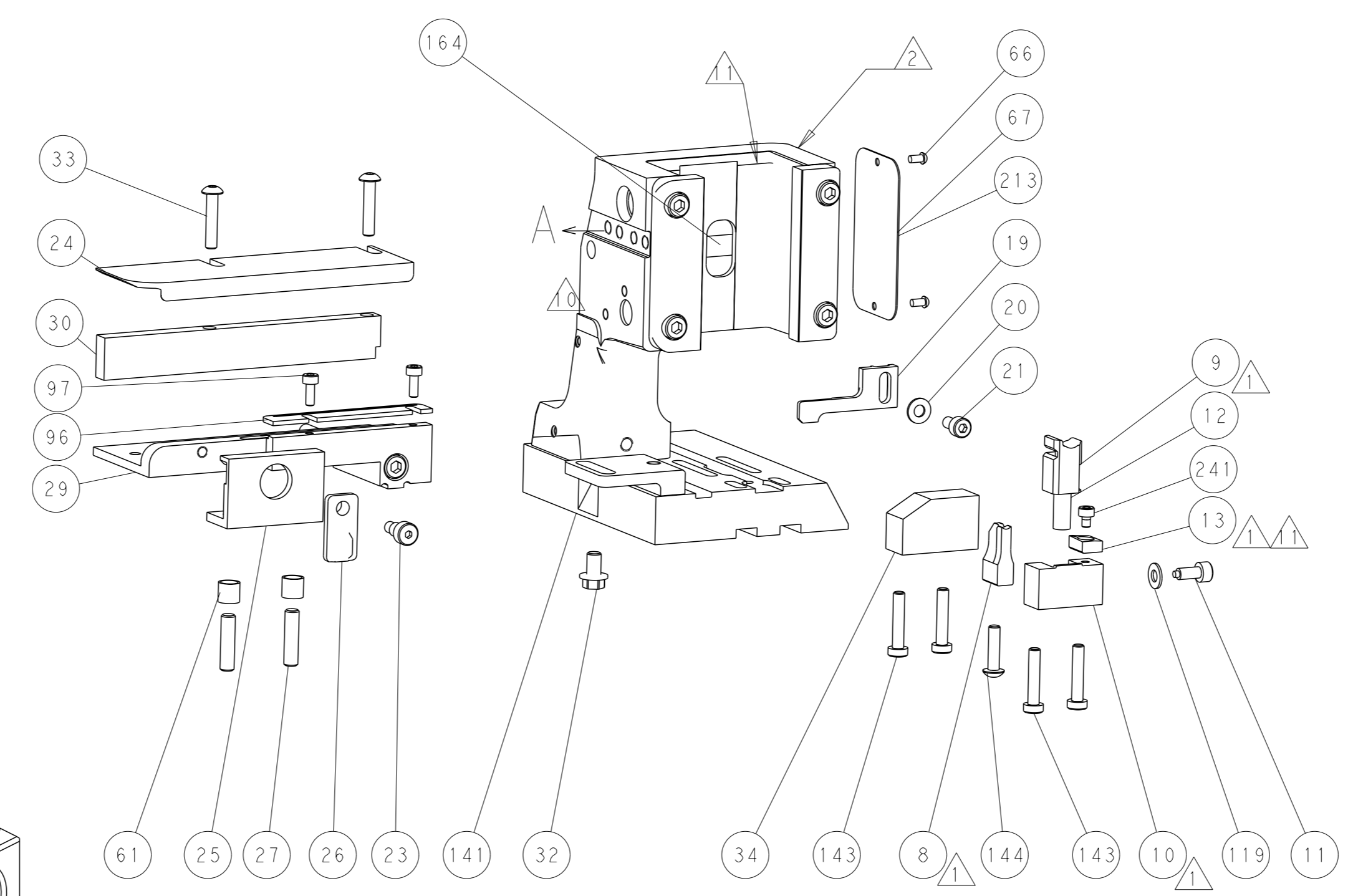
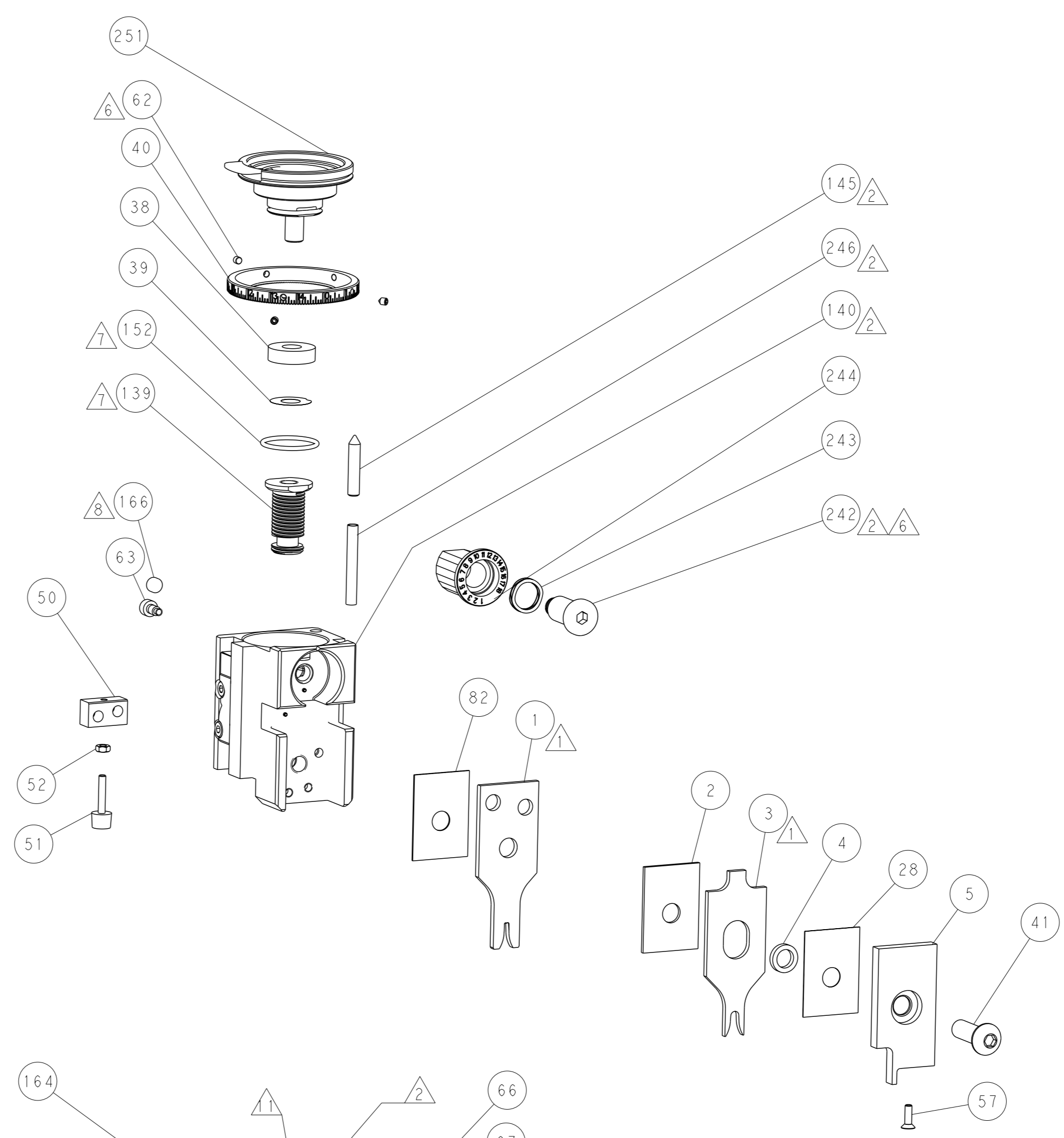
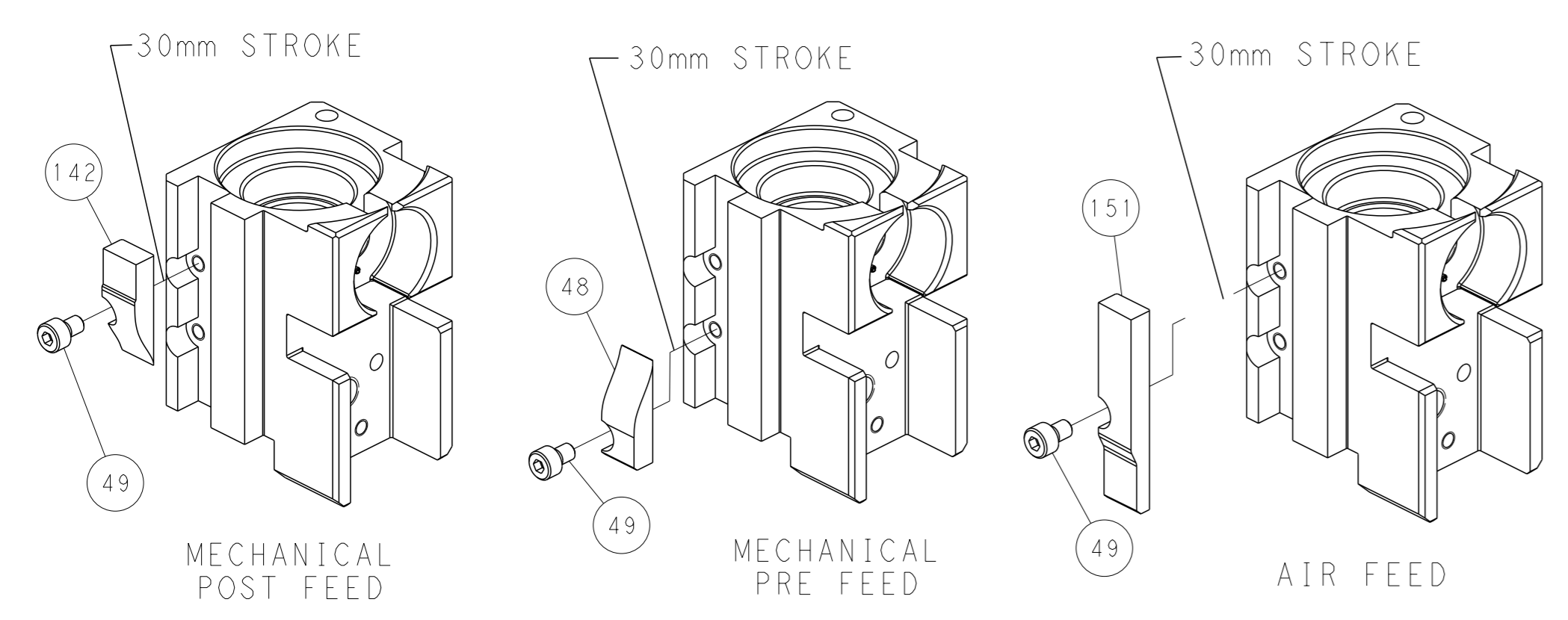
# PNEUMATIC



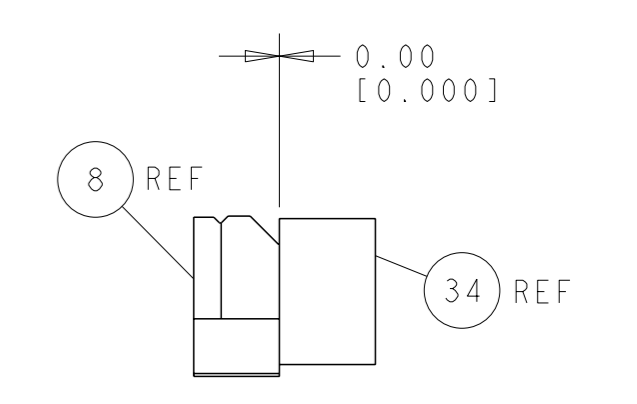
# SERVO LATCH PLATE



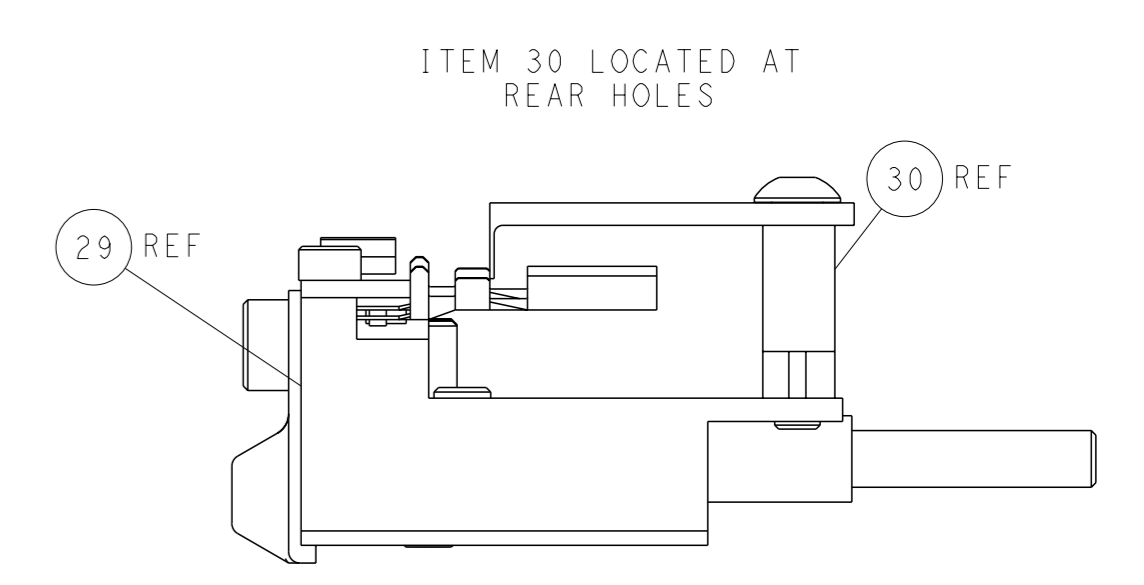
# CAM POSITIONS



SHEAR DEPRESSOR DETAIL



TERMINAL SUPPORT LOCATION



FEED TRACK POSITION  
GUIDE BY WIRE BARREL

**PACIFIC VERSION**  
Shown on sheets 3 of 4 & 4 of 4  
(Atlantic version shown on sheets 1 of 4 & 2 of 4)

<small>THIS DRAWING IS A CONTROLLED DOCUMENT FOR TYCO ELECTRONICS CORPORATION. IT IS SUBJECT TO CHANGE AND THE CONTROLLING ENGINEERING ORGANIZATION SHOULD BE CONTACTED FOR THE LATEST REVISION.</small>		DWN: Y. YIN 06NOV2013 CHK: G. BAILEY 06NOV2013 APVD: H. GUO 06NOV2013	<b>STE</b> TE Connectivity Harrisburg, PA 17105-3608
DIMENSIONS: mm TOLERANCES UNLESS OTHERWISE SPECIFIED: 0 PLC ±.5 1 PLC ±0.5 2 PLC ±0.13 3 PLC ±0.013 4 PLC ±0.001 ANGLES FINISH ±.		NAME: Ocean Side Feed Applicator PRODUCT SPEC: - APPLICATION SPEC: - WEIGHT: - SCALE: 1:2	SIZE: A1 CAGE CODE: 00779 DRAWING NO: C=2266142 SHEET: 4 of 4 REV: A1
MATERIAL: - FINISH: -		RESTRICTED TO: - Customer Accessible Production Drawing	