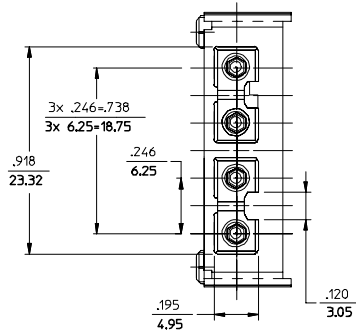
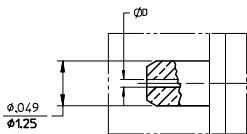


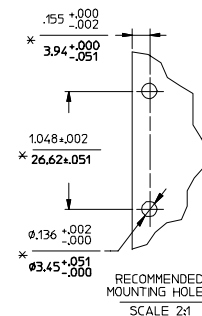
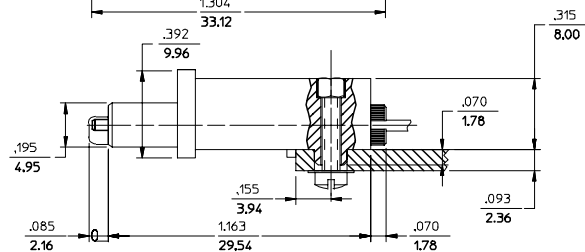
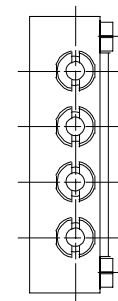
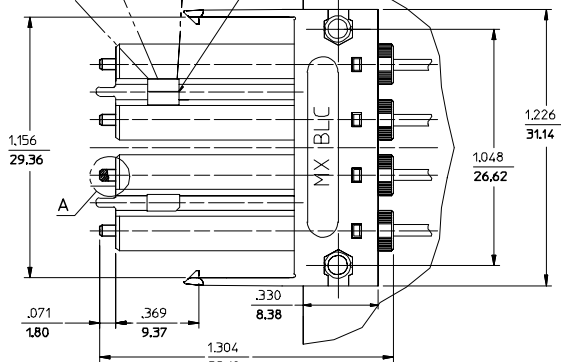
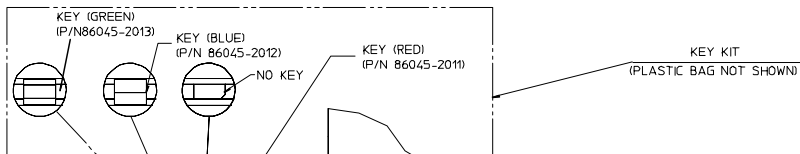
CONNECTOR P/N	ØD (H#)	CABLE TYPE
106047-2200	125.50	SINGLE MODE
106047-4200	125.00	
106047-5000	126.00	
106047-6200	125.25	



(DUST CAP NOT SHOWN)



DETAIL A
SCALE 10:1



NOTES:

- ALL DIMENSIONS ARE FOR REFERENCE ONLY EXCEPT WHEN MARKED WITH *.
- KEYS ARE TO BE PACKAGED UNASSEMBLED WITH CONNECTOR IN POLY BAG.

ENTER DESCRIPTION FCC NO: MF2006-0263 DRAWN: PGIBLIN CHKD: 2005/11/16 APPR: JGUMIN REVISIONS A	QUALITY SYMBOLS 	GENERAL TOLERANCES (UNLESS SPECIFIED)		DIMENSION STYLE		SCALE	DESIGN UNITS	THIRD ANGLE PROJECTION			
				IN/MM		2.5:1	INCH				
						DRAWN BY DATE		TITLE			
						CHECKED BY DATE		BLC/APC CONNECTOR (4 POSITION)			
				APPROVED BY DATE		MOLEX INCORPORATED					
		ANGULAR ±1/2°		MATERIAL NO.		DOCUMENT NO.		SHEET NO.			
		DRAFT WHERE APPLICABLE MUST REMAIN WITHIN DIMENSIONS		SEE TABLE		SD-106047-XX00		1 OF 01			
				SIZE C		THIS DRAWING CONTAINS INFORMATION THAT IS PROPRIETARY TO MOLEX INCORPORATED AND SHOULD NOT BE USED WITHOUT WRITTEN PERMISSION					