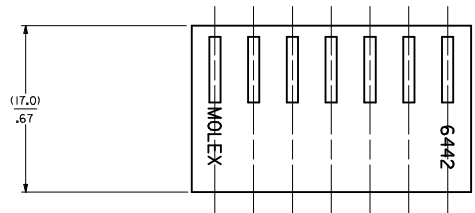


SECTION "C-C"



NO. OF CKT'S.	DIM. A	DIM. B
1		(4.78±.18)
2	(3.96±.13)	(8.74±.18)
3	.156±.005	.344±.007
4	(7.92±.13)	(12.70±.18)
5	.312±.005	.500±.007
6	(11.89±.13)	(16.66±.18)
7	.468±.005	.656±.007
8	(15.85±.13)	(20.62±.18)
9	.624±.005	.812±.007
10	(19.81±.13)	(24.59±.18)
11	.780±.005	.968±.007
12	(23.77±.13)	(28.55±.18)
13	.936±.005	1.124±.007
14	(27.74±.25)	(32.51±.30)
15	1.092±.010	1.280±.012
16	(31.70±.25)	(36.47±.30)
17	1.248±.010	1.436±.012
18	(35.66±.25)	(40.44±.30)
19	1.404±.010	1.592±.012
20	(39.62±.25)	(44.40±.30)
21	1.560±.010	1.748±.012
22	(43.59±.25)	(48.36±.30)
23	1.716±.010	1.904±.012
24	(47.55±.30)	(52.32±.36)
	1.872±.012	2.060±.014
	(51.51±.36)	(56.29±.41)
	2.028±.014	2.216±.016
	(55.47±.36)	(60.25±.41)
	2.184±.014	2.372±.016
	(59.44±.36)	(64.21±.41)
	2.340±.014	2.528±.016
	(63.40±.36)	(68.17±.41)
	2.496±.014	2.684±.016
	(67.36±.36)	(72.14±.41)
	2.652±.014	2.840±.016
	(71.32±.36)	(76.10±.41)
	2.808±.014	2.996±.016
	(75.29±.46)	(80.06±.51)
	2.964±.018	3.152±.020
	(79.25±.46)	(84.02±.51)
	3.120±.018	3.308±.020
	(83.21±.46)	(87.99±.51)
	3.276±.018	3.464±.020
	(87.17±.46)	(91.95±.51)
	3.432±.018	3.620±.020
	(91.14±.46)	(95.91±.51)
	3.588±.018	3.776±.020

- NOTES:
1. MATERIAL A: NYLON 6/6 UL94V-2. COLOR: NATURAL
  2. FINISH: N/A
  3. THIS PART COMPLIES WITH PRODUCT SPECIFICATION PS-40-02.
  4. PACKAGING SPECIFICATION: PK-6442-001
  5. HOUSING SHOWN ABOVE IS STANDARD HOUSING WITH NO OPTIONS.
  6. THIS HOUSING FOR USE WITH TERMINAL NO.
    - 45570-\*, (18-20 GA.) WITH (3.42)/.123 MAX. INSULATION DIA.
    - 6838-\*, (18-24 GA.) WITH (2.79)/.110 MAX. INSULATION DIA.
    - 7258-\*, (22-26 GA.) WITH (1.65)/.065 MAX. INSULATION DIA.
  7. CIRCUIT SIZE MOLDED ON 4 THRU 24 CIRCUIT HOUSINGS ONLY.
  8. THIS PART CONFORMS TO CLASS B REQUIREMENTS OF COSMETIC SPECIFICATION PS-45499-002.
  9. SEE SHEET 2 FOR OPTIONS.

HOUSING OPTIONS

CODE	HOOKS	SIDE HOOKS	RAMP
BLANK	NONE	NONE	NONE
A	NONE	YES	NONE
R	NONE	NONE	FRICITION
B	NONE	NONE	TYPE B
C	NONE	NONE	TYPE C

6442- \* N - \* - \* - \*

VOLTAGE RATING OPTION  
BLANK=NONE  
V= '250 VAC' ON HOUSING

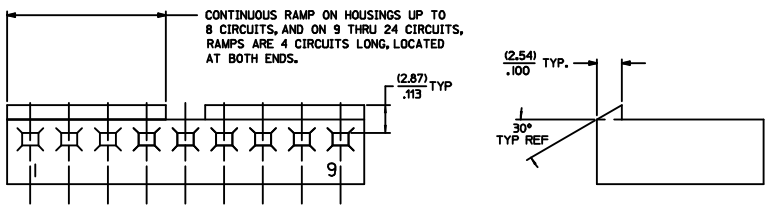
MAT'L. OPTION  
BLANK= MATERIAL A (SEE NOTE 1)

MOLDED VOID CODE  
Z=NO VOIDS  
A=CKT. 1 VOID,  
B=CKT. 2 VOID, ETC.  
5I=1ST MULTIPLE VOID,  
52=2ND MULTIPLE VOID, ETC.

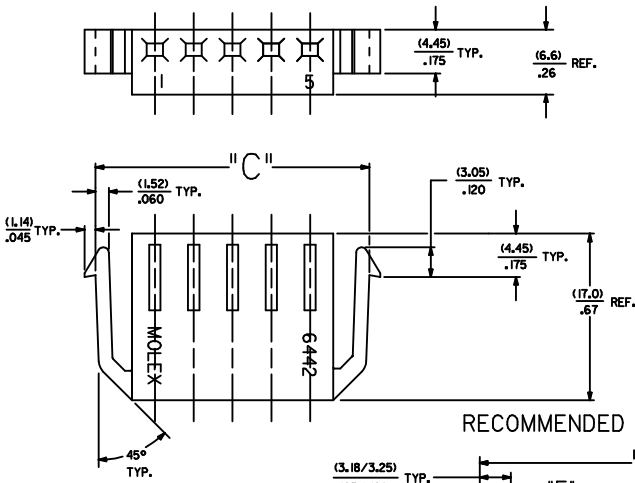
NO. OF CKT'S.

ADD 4.65 REF. EIC NO. UCP2014-0496 JUP DRAWN/KIPER 2013/08/01 CHYD/BELL 2013/08/05 APPR:FSM/TH 2013/08/06	QUALITY SYMBOLS	GENERAL TOLERANCES (UNLESS SPECIFIED)	DIMENSION STYLE	SCALE	DESIGN UNITS	THIRD ANGLE PROJECTION
	▽=0	mm INCH	MM/IN	---	INCH	
	▽=0	4 PLACES ± --- ± ---	DRAWN BY DATE			
	▽=0	3 PLACES ± --- ± .010	CHECKED BY DATE			
	2 PLACES ± 0.25 ± .014	PATEL 1986/12/03				KK (3.96)/.156 TRIFURCON CRIMP TERMINAL HOUSING 6442 SERIES <b>molex</b>
	1 PLACE ± 0.36 ± ---	APPROVED BY DATE				
	0 PLACE ± ±	LENZ 1986/12/03				MATERIAL NO. SEE CHART DOCUMENT NO. SD-6442
		ANGULAR ±1/2°				SHEET NO. 1 OF 4
		DRAFT WHERE APPLICABLE MUST REMAIN WITHIN DIMENSIONS				THIS DRAWING CONTAINS INFORMATION THAT IS PROPRIETARY TO MOLEX INCORPORATED AND SHOULD NOT BE USED WITHOUT WRITTEN PERMISSION

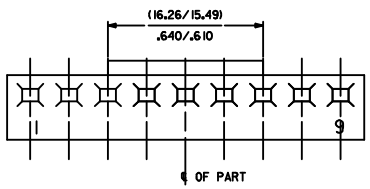
NO. OF CKT'S.	DIM. "C"	DIM. "D"
2	(16.48/15.60) .643/.614	(15.47/15.34) .609/.604
3	(20.45/19.56) .805/.770	(19.43/18.30) .765/.760
5	(28.37/27.48) 1.117/1.082	(27.36/27.23) L0777/1.072



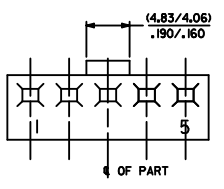
STD. RAMP OPTION CODE "R"



SIDE HOOKS OPTION CODE "A"

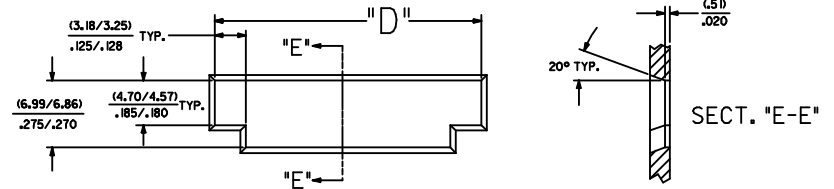


SELECTIVE RAMP OPTION CODE "C"

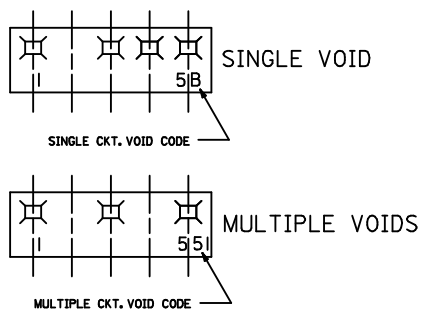


SELECTIVE RAMP OPTION CODE "B"

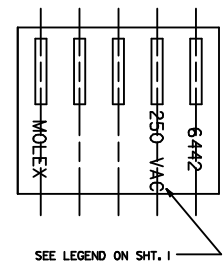
RECOMMENDED (2.03)/.080 THICK PANEL OPENING.



SECT. "E-E"



MOLDED VOIDS  
SEE LEGEND ON SHT. 1  
SEE CHART FOR VOID CKT. LOCATIONS



OPT. VOLTAGE RATING

ADD RAMP DIMENSION EC NO. UCF2013-1391 DRAWN/KIPPER CHKD/BANDERSON APPR/FSMTH	QUALITY SYMBOLS ▽=0 ▽=0 ▽=0	GENERAL TOLERANCES (UNLESS SPECIFIED)		DIMENSION STYLE		SCALE	DESIGN UNITS	THIRD ANGLE PROJECTION
		mm	INCH	MM/IN		---	INCH	☉
JZ	DESCRIPTION	4 PLACES	± .010	DRAWN BY	DATE	TITLE KK (3.96)/156 TRIFURCON CRIMP TERMINAL HOUSING 6442 SERIES <b>molex</b> DOCUMENT NO. SD-6442		
		3 PLACES	± .010	POLGAR	1986/12/05			
		2 PLACES	± 0.25 ± .014	CHECKED BY	DATE	SHEET NO. 2 OF 4		
		1 PLACE	± 0.36 ± .---	PATEL	1986/12/05			
		0 PLACE	± .---	APPROVED BY	DATE	MATERIAL NO. SEE CHART		
			± .---	LENZ	1986/12/05			

THIS DRAWING CONTAINS INFORMATION THAT IS PROPRIETARY TO MOLEX INCORPORATED AND SHOULD NOT BE USED WITHOUT WRITTEN PERMISSION

