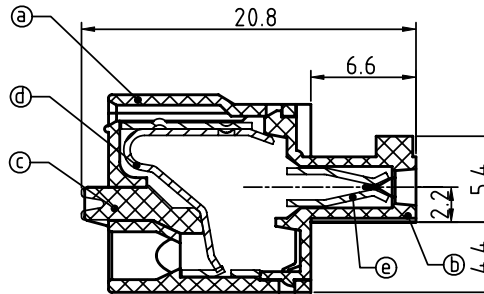
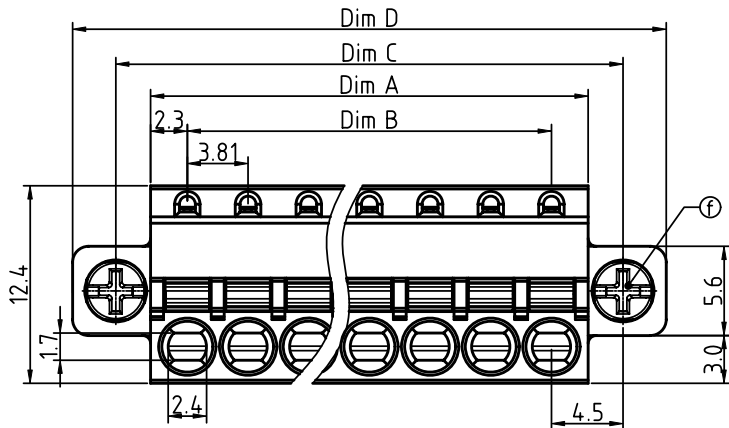
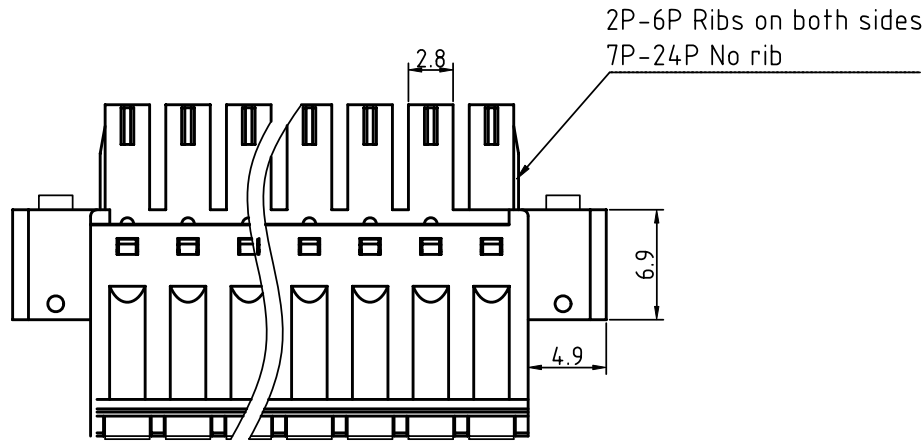


PRODUCT NUMBER	PITCH
HWxx30x200J0G	3.81 mm



Material:

- Item ① Top body: Thermoplastic (UL94V-0)
- Item ② Bottom body: Thermoplastic (UL94V-0)
- Item ③ Terminal lever: Thermoplastic (UL94V-0) Orange(RAL2011/P)
- Item ④ Spring clamp: Stainless Steel
- Item ⑤ Female contact: PhBz (CuSn) Tin plated
- Item ⑥ Flange screw: Steel M2.5 plated zinc * +/- * combination type

Electrical

- Voltage rating: 300V
- Current rating: 8A
- Solid wire(AWG): 16-28
- Stranded wire(AWG): 16-28
- Wire strip length: 8-9mm
- Withstanding Voltage: 1.6KV
- Operating temperature: -40°C to +115°C
- Safety Approval:

N=Number of poles
 Dim A=Nx3.81+0.80
 Dim B=(N-1)x3.81
 Dim C=(N-1)x3.81+9.0
 Dim D=(N-1)x3.81+14.4

Poles	Tolerance
2P-6P	±0.10
7P-12P	±0.20
13P-18P	±0.30
19P-24P	±0.40

PART NO.: HW xx 3 0 x 2 00J 0 G

- Solid block
 - No. of poles
 - Color
 - RoHS compliant (lead<4% In copper Alloy)
- | | | | |
|-----|----------|---|-------------------|
| 02 | 2 poles | 0 | Black (RAL9005) |
| 03 | 3 poles | 2 | Red (RAL3001/D) |
| ... | ... | 3 | Orange(RAL2011/P) |
| ... | ... | 4 | Yellow(RAL1018/A) |
| ... | ... | 5 | Green(RAL6018/T) |
| 24 | 24 poles | 6 | Blue (RAL5015/A) |
| | | 8 | Grey(RAL7035/D) |
| | | 9 | White(RAL1102) |
| | | C | Green(RAL6018/U) |

mat'l. code		surface ASME Y14.5	tolerance ASME Y14.5	projection	product family
ltr	ecn no	dr	date		TERMINAL BLOCK
tolerances unless otherwise specified				MM	title
angles	0	X.±0.5		scale	TERMINAL BLOCK
0	X.X±0.3		TERMINAL BLOCK		
X*±1"				X.XX±0.1	SPRING CLAMP,PLUGGABLE PLUG,WITH FLANGE
dr	EVIN ZHONG	051514			dwg no
enr	EVIN ZHONG	051514			sheet 1 of 1
chr	HANKE FENG	051514			size
appd	SHI JUN	051514			A4
sheet index	revision	A		type	CUSTOMER Drawing
	sheet	1			