

PART NUMBER	REV	FIRST USED
567969-1	A	854040-3

TERMINAL NAME: .098 TAB					
VISIBLE PAD LTR	CRIMP DATA (AMP TERMINAL)				
	CRIMP HEIGHT	WIRE SIZE			
A	.042 ±.002 [1.07 ±0.05mm]	22			
B	.040 ±.002 [1.02 ±0.05mm]	24 or 25			
C	.038 ±.002 [0.97 ±0.05mm]	26 or 28			
D	NOT	USED			
CRIMP	SIZE	TYPE	RANGE		
WIRE	.062 [1.57mm]	F	28-22		
INSUL	-	-	-		
WIRE STRIP LENGTH	TERM APPL SPEC	FEED	APPL INSTRUCTION	SET UP GAGE	LAYOUT
.188-.203	NONE	.215	SEE CUSTOMER MANUAL	NONE	L2459

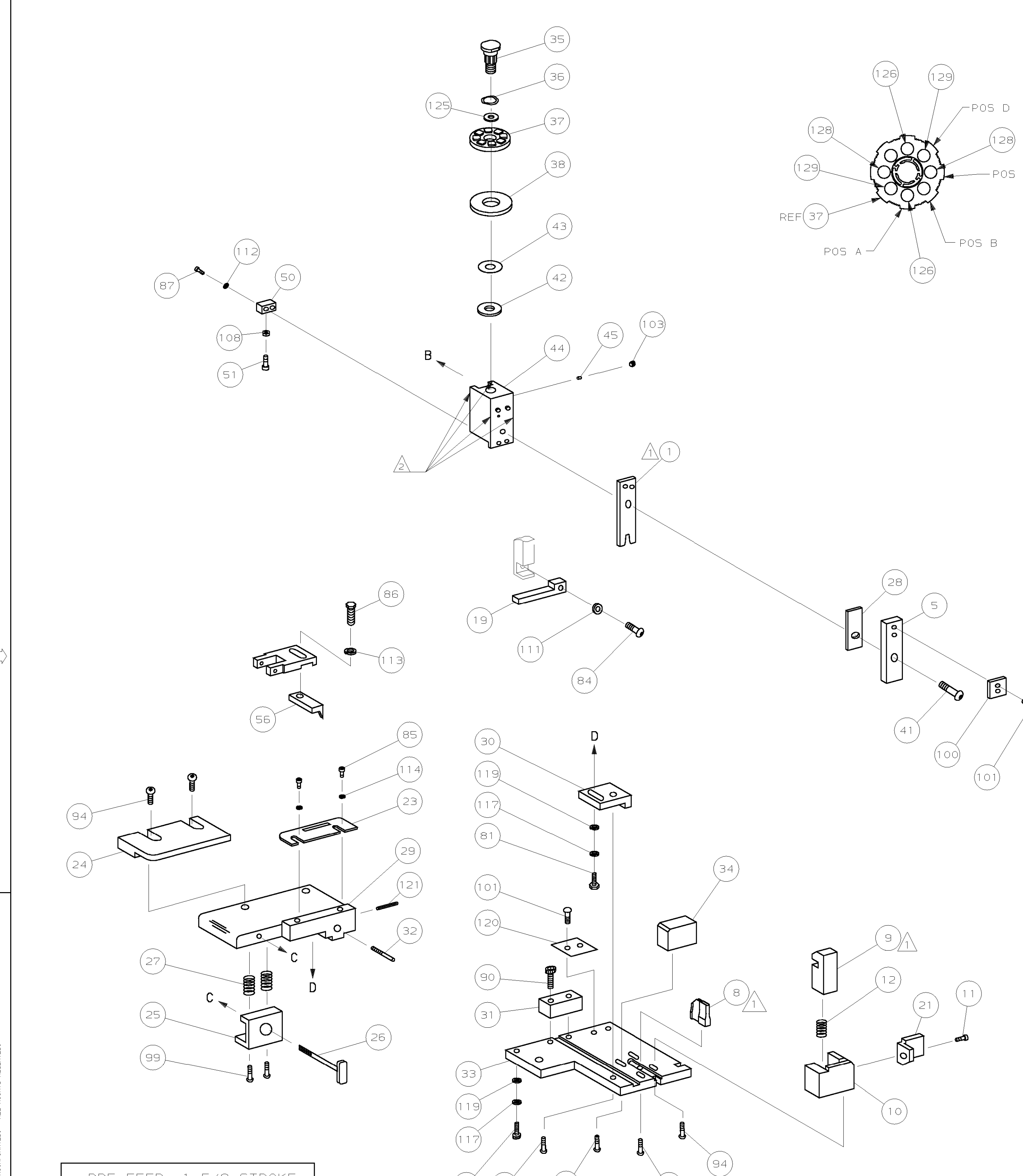
SIM TO HDM NONE

QTY	REV	TERMINAL	DESCRIPTION	ITEM NO	
				70	
				69	
				68	
				67	
				66	
				65	
				64	
				63	
				62	
				61	
				60	
				59	
				58	
				57	
				56	
				55	
				54	
				53	
				52	
1	-	A	811242-2	BUMPER, HOLDDOWN	51
1	-	A	690753-1	SPACER, TONKER	50
					49
1	-	A	690602-6	CAM, PRE-FEED 1.62 STROKE	48
					47
					46
1	-	A	690191-1	PLUG, NYLON	45
1	-	C	455673-1	RAM	44
1	-	A	690125-1	WASHER, LAMINATED	43
1	-	A	690124-1	WASHER, RAM	42
1	-	A	7-21002-9	BOLT, CRIMPER (5/16x1.00)	41
					40
					39
1	-	A	690223-2	SPACER, INSULATION DISC	38
1	-	D	354777-1	WIRE DISC, PLASTIC	37
1	-	A	22480-5	WASHER, SPRING	36
1	-	B	690212-1	POST, RAM	35
1	-	B	690786-1	SUPPORT, TERMINAL	34
1	-	C	462544-1	PLATE, BASE SPECIAL	33
1	-	A	690432-3	SCREW, ADJUSTMENT	32
1	-	B	462543-1	BLOCK, SCREW SPECIAL	31
1	-	B	455689-1	BLOCK, STRIP GUIDE ADJ	30
1	-	C	455671-1	PLATE, STRIP GUIDE	29
1	-	C	1-455888-0	SPACER, FRONT SHEAR DEP	28
2	-	A	1-22284-0	SPRING, DRAG	27
1	-	B	690546-1	LEVER, DRAG RELEASE	26
1	-	B	240792-1	DRAG, TERMINAL	25
1	-	D	8-690504-3	GUIDE, STRIP (REAR)	24
1	-	A	690438-1	GUIDE, STRIP (FRONT)	23
					22
1	-	A	463756-1	GUIDE, SCRAP	21
					20
REF	-	C	462615-1	STRIPPER	19
					18
					17
					16
					15
					14
					13
1	-	A	5-22280-0	SPRING, SHEAR	12
1	-	B	1-690461-6	STOP, SHEAR (FRONT)	11
1	-	B	462548-1	HOLDER, SHEAR (FRONT) SP	10
1	-	B	462547-1	SHEAR, FLOAT (FRONT) SP	9
1	-	C	2-904717-5	ANVIL	8
					7
					6
1	-	A	462838-1	DEPRESSOR, SHEAR (FRONT) SP	5
					4
					3
					2
					1
1	-	C	4-456403-1	CRIMPER, WIRE	1

QTY	REV	TERMINAL	DESCRIPTION	ITEM NO	
2	-	C	6-354779-6	PIN, WIRE DISC (.3320)D	129
2	-	C	6-354779-2	PIN, WIRE DISC (.3300)C	128
					127
2	-	C	7-354779-2	PIN, WIRE DISC (.3350)A	126
1	-	A	986950-1	WASHER, FLAT PRECISION	125
1	-	A	217238-3	GENERAL INSTRUCTION PACKAGE	124
					123
					122
1	-	A	4-21028-0	PIN, SLT SPR (ø.093x.75)ST GDE PL	121
1	-	B	690701-2	PLATE, SERIAL NO.	120
2	-	A	21899-2	WASHER, FLAT (#10)S G ADJ BLK	119
					118
2	-	A	21024-5	WASHER, LOCK (#10)ADJ BLOCK	117
					116
					115
2	-	A	21024-2	WASHER, LOCK (#4)FRONT STP GUIDE	114
REF	-	A	21024-4	WASHER, LOCK (#8)FEED FINGER	113
2	-	A	21024-4	WASHER, LOCK (#8)DEP-HOLD	112
REF	-	A	21024-4	WASHER, LOCK (#8)STRIPPER	111
					110
					109
1	-	A	21018-5	NUT, HEX (#6)HOLD DOWN	108
					107
					106
					105
					104
1	-	A	21009-2	SCR, 5KT SET (1/4-20x.25 LW)RAM	103
					102
4	-	A	21017-2	SCR, DRIVE (#2x.19)ID PLATE	101
1	-	B	819347-1	PLATE, IDENTIFICATION	100
2	-	A	3-21002-0	SCR, BHC (10-32x.88)DRAG	99
1	-	A	22733-8	SCR, BHC (8-32x.38 LW)ANVIL	98
					97
1	-	A	3-21000-8	SCR, 5HC (10-32x.88)MOUNTING	96
1	-	A	2-21002-7	SCR, BHC (10-32x.50)5G ADJ BLK	95
6	-	A	2-21002-2	SCR, BHC (8-32x.50)SHEAR-TERM SUP	94
					93
					92
1	-	A	1-21002-7	SCR, 5HC (6-32x.50)CAM	91
2	-	A	2-21000-7	SCR, 5HC (8-32x.50)SCR BLK	90
					89
					88
2	-	A	2-21000-7	SCR, 5HC (8-32x.48)DEP-HOLD DOWN	87
REF	-	A	2-22603-0	SCR, HEX HD (8-32x.31)FEED FINGER	86
2	-	A	1-21000-3	SCR, 5HC (4-40x.25)F ST GUIDE	85
REF	-	A	22733-9	SCR, BHC (8-32x.50 SL)STRIPPER	84
					83
					82
1	-	A	3-22603-1	SCR, HEX (10-32x.38)5G ADJ BL	81
					80
					79
					78
2	-	B	463310-7	BLADE, STRIPPING (#24)	77
					76
					75
					74
					73
					72
					71

QTY	REV	TERMINAL	DESCRIPTION	ITEM NO	
-1	U/M	DWG SIZE	PART NO	DESCRIPTION	ITEM NO

QTY	REV	TERMINAL	DESCRIPTION	ITEM NO	
-1	U/M	DWG SIZE	PART NO	DESCRIPTION	ITEM NO



PRE-FEED 1 5/8 STROKE

ROTATED 180°

- ▲1 RECOMMENDED SPARE PARTS.
- ▲2 GREASE LIGHTLY.
- ▲3 ITEM NOT SHOWN
- ▲4 CUT TO LENGTH AT ASSY

DIMENSIONS IN INCHES. DO NOT SCALE PRINT. TOLERANCES UNLESS OTHERWISE SPECIFIED:		MACH REF STRIPPER CRIMPER	
DR C.ERISHMAN	29NOV00	APP T.ELBIN	29NOV00
2 PLC DEC ±	3 PLC DEC ±	4 PLC DEC ±	ANGLES ±
REMOVE BURRS, BREAK SHARP EDGES R.015 MAX		SCALE 1 OF 1	
CUSTOMER AND ASSEMBLY DRAWING		567969	