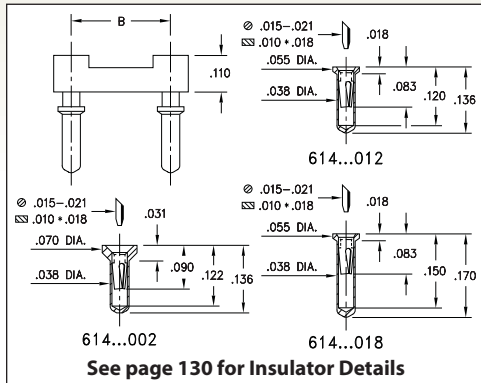
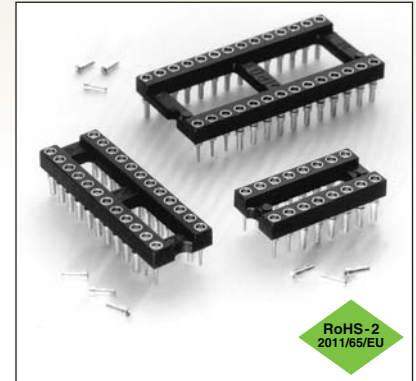


# DUAL-IN-LINE SOCKETS

## SERIES 614 • CARRIER TYPE, ULTRA LOW PROFILE • OPEN FRAME



- Ultra low profile receptacles sit only .018" to .031" high above the board
- Removable plastic carriers can be returned for reloading
- Hi-Rel, 3-finger BeCu #11 contact is rated at 3 amps. See page 251 for details
- Series 614 uses MM #0552-1, #0442-0, #0552-2 pins. See pages 157 and 158 for details
- Insulators are high temperature thermoplastic, suitable for all soldering operations
- For Electrical, Mechanical and Environmental Data, see page 264 for details



| Total number of pins             | Carrier Type |     |     | Quantity per tube | ORDERING INFORMATION           |                           |                           |           |
|----------------------------------|--------------|-----|-----|-------------------|--------------------------------|---------------------------|---------------------------|-----------|
|                                  |              |     |     |                   | Length = .136                  | Length = .136             | Length = .170             |           |
|                                  | A            | B   | C   |                   | (.039 Min. Mounting Hole)      | (.039 Min. Mounting Hole) | (.039 Min. Mounting Hole) |           |
| 10                               | 0.5          | 0.2 | 0.3 | 40                | 614-XX-210-31-012000           | 614-XX-210-31-002000      | 614-XX-210-31-018000      |           |
| 4                                | 0.2          | 0.3 | 0.4 | 102               | 614-XX-304-31-012000           | 614-XX-304-31-002000      | 614-XX-304-31-018000      |           |
| 6                                | 0.3          | 0.3 | 0.4 | 67                | 614-XX-306-31-012000           | 614-XX-306-31-002000      | 614-XX-306-31-018000      |           |
| 8                                | 0.4          | 0.3 | 0.4 | 50                | 614-XX-308-31-012000           | 614-XX-308-31-002000      | 614-XX-308-31-018000      |           |
| 10                               | 0.5          | 0.3 | 0.4 | 40                | 614-XX-310-31-012000           | 614-XX-310-31-002000      | 614-XX-310-31-018000      |           |
| 14                               | 0.7          | 0.3 | 0.4 | 28                | 614-XX-314-31-012000           | 614-XX-314-31-002000      | 614-XX-314-31-018000      |           |
| 16                               | 0.8          | 0.3 | 0.4 | 25                | 614-XX-316-31-012000           | 614-XX-316-31-002000      | 614-XX-316-31-018000      |           |
| 18                               | 0.9          | 0.3 | 0.4 | 22                | 614-XX-318-31-012000           | 614-XX-318-31-002000      | 614-XX-318-31-018000      |           |
| 20                               | 1.0          | 0.3 | 0.4 | 20                | 614-XX-320-31-012000           | 614-XX-320-31-002000      | 614-XX-320-31-018000      |           |
| 22                               | 1.1          | 0.3 | 0.4 | 18                | 614-XX-322-31-012000           | 614-XX-322-31-002000      | 614-XX-322-31-018000      |           |
| 24                               | 1.2          | 0.3 | 0.4 | 16                | 614-XX-324-31-012000           | 614-XX-324-31-002000      | 614-XX-324-31-018000      |           |
| 28                               | 1.4          | 0.3 | 0.4 | 14                | 614-XX-328-31-012000           | 614-XX-328-31-002000      | 614-XX-328-31-018000      |           |
| 20                               | 1.0          | 0.4 | 0.5 | 20                | 614-XX-420-31-012000           | 614-XX-420-31-002000      | 614-XX-420-31-018000      |           |
| 22                               | 1.1          | 0.4 | 0.5 | 18                | 614-XX-422-31-012000           | 614-XX-422-31-002000      | 614-XX-422-31-018000      |           |
| 24                               | 1.2          | 0.4 | 0.5 | 16                | 614-XX-424-31-012000           | 614-XX-424-31-002000      | 614-XX-424-31-018000      |           |
| 28                               | 1.4          | 0.4 | 0.5 | 14                | 614-XX-428-31-012000           | 614-XX-428-31-002000      | 614-XX-428-31-018000      |           |
| 32                               | 1.6          | 0.4 | 0.5 | 12                | 614-XX-432-31-012000           | 614-XX-432-31-002000      | 614-XX-432-31-018000      |           |
| 24                               | 1.2          | 0.6 | 0.7 | 16                | 614-XX-624-31-012000           | 614-XX-624-31-002000      | 614-XX-624-31-018000      |           |
| 28                               | 1.4          | 0.6 | 0.7 | 14                | 614-XX-628-31-012000           | 614-XX-628-31-002000      | 614-XX-628-31-018000      |           |
| 32                               | 1.6          | 0.6 | 0.7 | 12                | 614-XX-632-31-012000           | 614-XX-632-31-002000      | 614-XX-632-31-018000      |           |
| 36                               | 1.8          | 0.6 | 0.7 | 11                | 614-XX-636-31-012000           | 614-XX-636-31-002000      | 614-XX-636-31-018000      |           |
| 40                               | 2.0          | 0.6 | 0.7 | 10                | 614-XX-640-31-012000           | 614-XX-640-31-002000      | 614-XX-640-31-018000      |           |
| 42                               | 2.1          | 0.6 | 0.7 | 9                 | 614-XX-642-31-012000           | 614-XX-642-31-002000      | 614-XX-642-31-018000      |           |
| 48                               | 2.4          | 0.6 | 0.7 | 8                 | 614-XX-648-31-012000           | 614-XX-648-31-002000      | 614-XX-648-31-018000      |           |
| 50                               | 2.5          | 0.6 | 0.7 | 8                 | 614-XX-650-31-012000           | 614-XX-650-31-002000      | 614-XX-650-31-018000      |           |
| 52                               | 2.6          | 0.6 | 0.7 | 7                 | 614-XX-652-31-012000           | 614-XX-652-31-002000      | 614-XX-652-31-018000      |           |
| 50                               | 2.5          | 0.9 | 1.0 | 8                 | 614-XX-950-31-012000           | 614-XX-950-31-002000      | 614-XX-950-31-018000      |           |
| 52                               | 2.6          | 0.9 | 1.0 | 7                 | 614-XX-952-31-012000           | 614-XX-952-31-002000      | 614-XX-952-31-018000      |           |
| 64                               | 3.2          | 0.9 | 1.0 | 6                 | 614-XX-964-31-012000           | 614-XX-964-31-002000      | 614-XX-964-31-018000      |           |
| <b>SPECIFY PLATING CODE XX =</b> |              |     |     |                   | 91                             | 93                        | 41 ◆                      | 43 ◆      |
| Sleeve (Pin)                     |              |     |     |                   | 200 μ" Sn/Pb                   | 200 μ" Sn/Pb              | 200 μ" Sn                 | 200 μ" Sn |
| Contact (Clip)                   |              |     |     |                   | 10 μ" Au                       | 30 μ" Au                  | 10 μ" Au                  | 30 μ" Au  |
|                                  |              |     |     |                   | XX=Plating Code<br>See to Left |                           |                           |           |

