

MICRO SWITCH

FREERPORT ILLINOIS, U.S.A
A DIVISION OF HONEYWELL INC.
FED. MFG. CODE 91929

SWITCH-BASIC

CATALOG LISTING

10HM1-1

10HM1-1

PAGE 1 OF 1

M

DRAWING NUMBER

ISSUE 3

REPLACES

PR-13412

RELEASE NO.

CHECK

CHECK

84

OCT 84

AG

84

CHECK

84

OCT

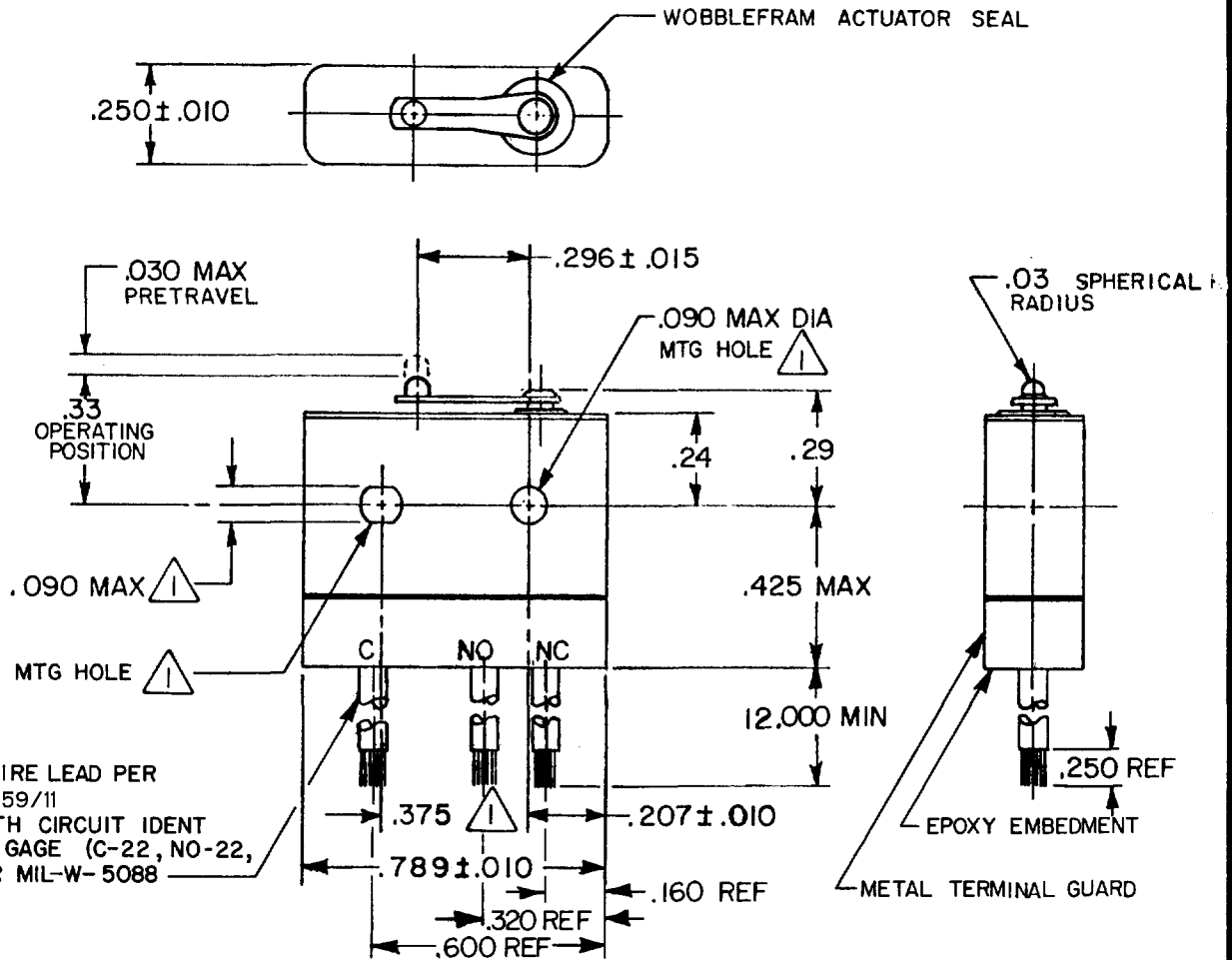
84

AS

FORMTEK

FO-52848-B

DRAWN

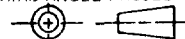


NOTES

- 1 MOUNTING HOLES WILL ACCEPT PINS OR SCREWS OF .087 MAX DIA ON .375 ± .002 CENTERS
- 2 - FOR USE IN TEMPERATURE RANGE -85°F TO +250°F (DOWN TO -300°F IF WIRE LEADS ARE NOT FLEXED)
- 3 - HERMETICALLY SEALED (METAL-TO-METAL, GLASS-TO-METAL)
- 4 - ALL EXPOSED PARTS ARE OF CORROSION RESISTANT MATERIALS
- 5 WEIGHT OF SWITCH ONLY IS 0.22 OZ MAX WEIGHT OF CONDUCTOR GROUP ONLY IS 0.20 OZ MAX PER FOOT
- 6 - DO NOT APPLY MORE THAN 1 1/2 INCH-LBS OF TORQUE WHEN TIGHTENING MOUNTING SCREWS
- 7 - 24K GOLD MOVABLE CONTACT
- 8 - GOLD ALLOY STATIONARY CONTACTS

THIS DRAWING COVERS A PROPRIETARY ITEM AND IS THE PROPERTY OF MICRO SWITCH, A DIVISION OF HONEYWELL. THIS DRAWING IS NOT TO BE COPIED OR USED WITHOUT THE APPROVAL OF MICRO SWITCH.

THIRD ANGLE PROJECTION



CHARACTERISTICS

OPERATING FORCE-----7 OZ MAX

RELEASE FORCE-----1 OZ MIN

DIFFERENTIAL TRAVEL-----.006 MAX

OVERTRAVEL-----.003 MIN

ELECTRICAL DATA

CONTACT ARRANGEMENT
S P D T

28 VOLTS DC RATING

INDUCTIVE ---- SEA LEVEL-----1/4 AMP
70,000 FT-----1/4 AMP

RESISTIVE ---- SEA LEVEL-----1/2 AMP
70,000 FT-----1/2 AMP

SCALE 2 : 1

DO NOT SCALE PRINT

UNLESS OTHERWISE SPECIFIED TOLERANCES ARE

ONE PLACE (.0) ± .030
TWO PLACE (.00) ± .015
THREE PLACE (.000) ± .005

ANGLES ±
RAW MATERIAL - COMMERCIAL STANDARD

DIMENSIONS ARE IN INCHES AND ARE TO BE MET BEFORE PROTECTIVE COATINGS ARE APPLIED

MICRO SWITCH STANDARDS APPLY

WEIGHT 5