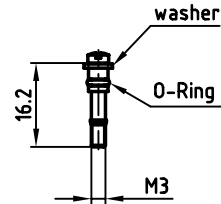
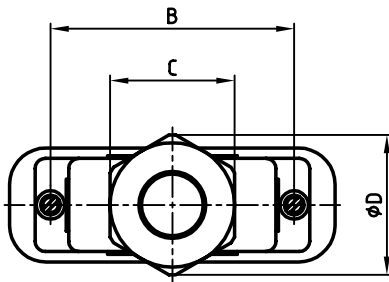
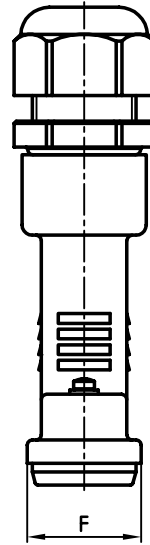
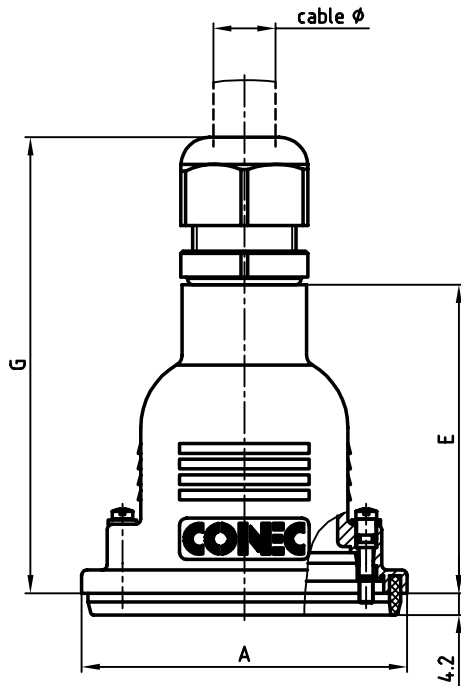


used for: D-SUB



jackscrew incl. washers and O-ring

Shellsize	A	B	C	ϕD	E	F	$G_{-0.3}^{+1}$	cable ϕ	Part NO.
1	40.76	25.0	SW 22	24.6	51.0	22.0	77.0	5 - 10	165X15169X
2	49.06	33.3	SW 24	26.5	51.0	22.0	79.0	6 - 12	165X15179X
3	62.80	47.04	SW 24	26.5	59.5	22.0	87.5	6 - 12	165X15189X
4	78.86	63.5	SW 33	36.2	67.0	22.0	99.0	9 - 16	165X15199X
5	76.46	61.1	SW 42	47.0	67.0	24.8	107.0	13 - 20	165X15209X

NOTES:

- HOOD: PBT GF , BLACK
- SCREWS: STAINLESS STEEL

THIS DRAWING MAY NOT BE COPIED OR REPRODUCED IN ANY WAY, AND MAY NOT BE PASSED ON TO A THIRD PARTY, WITHOUT WRITTEN PERMISSION. OWNERSHIP AND COPYRIGHT OF CONEC GmbH DO NOT ALTER CAD DRAWING BY HAND

tolerance			scale: 1:1
	2002	date	material: SEE NOTES
	drawn	21.05.	name
	appd.	21.05.	E. Mickenbecker
	norm		
	d-old		
			WATER RESISTANT D-SUB HOOD 9-50pos. with short screw / M3 thread
rev.			description
			dwg no: AutoCAD 2000 DIN-A
			16K1A582 3 sh:1/1
			part no: SEE TABLE

scale: 1:1
material: SEE NOTES
WATER RESISTANT D-SUB HOOD 9-50pos. with short screw / M3 thread
dwg no: AutoCAD 2000 DIN-A
16K1A582 3 sh:1/1
part no: SEE TABLE