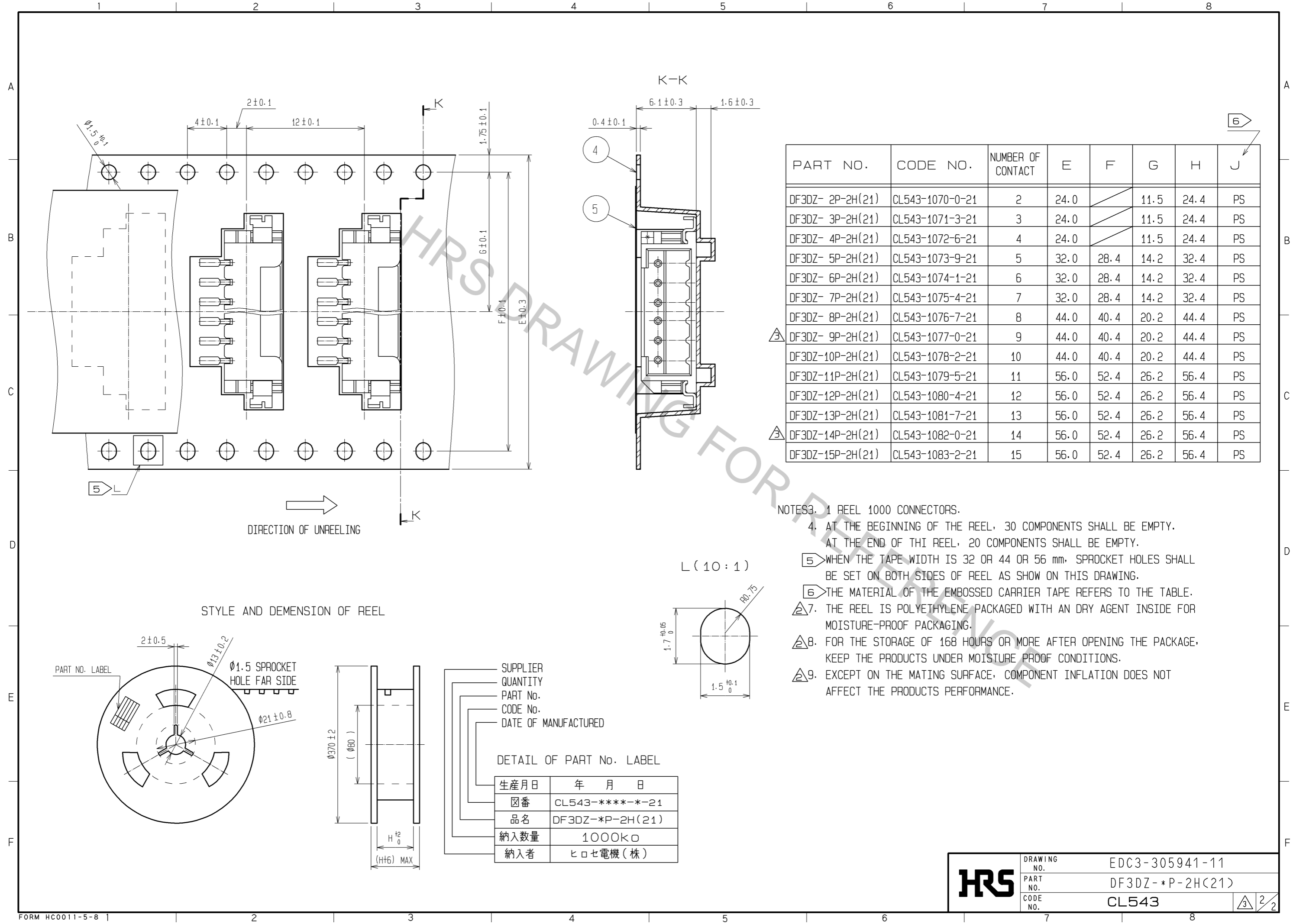


PART NO.	CODE NO.	A	B	C	D
DF3DZ- 2P-2H(21)	CL543-1070-0-21	4.6	2.0	8.5	8.74
DF3DZ- 3P-2H(21)	CL543-1071-3-21	6.6	4.0	10.5	10.74
DF3DZ- 4P-2H(21)	CL543-1072-6-21	8.6	6.0	12.5	12.74
DF3DZ- 5P-2H(21)	CL543-1073-9-21	10.6	8.0	14.5	14.74
DF3DZ- 6P-2H(21)	CL543-1074-1-21	12.6	10.0	16.5	16.74
DF3DZ- 7P-2H(21)	CL543-1075-4-21	14.6	12.0	18.5	18.74
DF3DZ- 8P-2H(21)	CL543-1076-7-21	16.6	14.0	20.5	20.74
DF3DZ- 9P-2H(21)	CL543-1077-0-21	18.6	16.0	22.5	22.74
DF3DZ-10P-2H(21)	CL543-1078-2-21	20.6	18.0	24.5	24.74
DF3DZ-11P-2H(21)	CL543-1079-5-21	22.6	20.0	26.5	26.74
DF3DZ-12P-2H(21)	CL543-1080-4-21	24.6	22.0	28.5	28.74
DF3DZ-13P-2H(21)	CL543-1081-7-21	26.6	24.0	30.5	30.74
DF3DZ-14P-2H(21)	CL543-1082-0-21	28.6	26.0	32.5	32.74
DF3DZ-15P-2H(21)	CL543-1083-2-21	30.6	28.0	34.5	34.74

2	BRASS	SURFACE:TIN PLATED 1μm min UNDER PLATING:COPPER PLATED 0.5μm min	5	POLYESTER	CLEAR(COVER TAPE)
1	POLYAMIDE	BEIGE, UL94V-0	4	J < 6	CLEAR(EMBOSSD CARRIER TAPE)
			3	BRASS	SURFACE:TIN PLATED 1μm min UNDER PLATING:NICKEL PLATED 1μm min
NO.	MATERIAL	FINISH, REMARKS	NO.	MATERIAL	FINISH, REMARKS

UNITS	SCALE	COUNT	DESCRIPTION OF REVISIONS	DESIGNED	CHECKED	DATE
mm	5 : 1	4	DIS-H-003377	KT. ISHII	TS. KUMAZAWA	08.10.22
APPROVED : KJ. KATAYOSE			05.01.05	DRAWING NO. EDC3-305941-11		
CHECKED : KI. AKIYAMA			05.01.05	PART NO. DF3DZ-*P-2H(21)		
DESIGNED : TH. ARAI			05.01.05	CODE NO. CL543		
DRAWN : TH. ARAI			05.01.05			



PART NO.	CODE NO.	NUMBER OF CONTACT	E	F	G	H	J
DF3DZ- 2P-2H(21)	CL543-1070-0-21	2	24.0		11.5	24.4	PS
DF3DZ- 3P-2H(21)	CL543-1071-3-21	3	24.0		11.5	24.4	PS
DF3DZ- 4P-2H(21)	CL543-1072-6-21	4	24.0		11.5	24.4	PS
DF3DZ- 5P-2H(21)	CL543-1073-9-21	5	32.0	28.4	14.2	32.4	PS
DF3DZ- 6P-2H(21)	CL543-1074-1-21	6	32.0	28.4	14.2	32.4	PS
DF3DZ- 7P-2H(21)	CL543-1075-4-21	7	32.0	28.4	14.2	32.4	PS
DF3DZ- 8P-2H(21)	CL543-1076-7-21	8	44.0	40.4	20.2	44.4	PS
DF3DZ- 9P-2H(21)	CL543-1077-0-21	9	44.0	40.4	20.2	44.4	PS
DF3DZ-10P-2H(21)	CL543-1078-2-21	10	44.0	40.4	20.2	44.4	PS
DF3DZ-11P-2H(21)	CL543-1079-5-21	11	56.0	52.4	26.2	56.4	PS
DF3DZ-12P-2H(21)	CL543-1080-4-21	12	56.0	52.4	26.2	56.4	PS
DF3DZ-13P-2H(21)	CL543-1081-7-21	13	56.0	52.4	26.2	56.4	PS
DF3DZ-14P-2H(21)	CL543-1082-0-21	14	56.0	52.4	26.2	56.4	PS
DF3DZ-15P-2H(21)	CL543-1083-2-21	15	56.0	52.4	26.2	56.4	PS

- NOTES:
- 1 REEL 1000 CONNECTORS.
 4. AT THE BEGINNING OF THE REEL, 30 COMPONENTS SHALL BE EMPTY.
AT THE END OF THE REEL, 20 COMPONENTS SHALL BE EMPTY.
 - 5 WHEN THE TAPE WIDTH IS 32 OR 44 OR 56 mm, SPROCKET HOLES SHALL BE SET ON BOTH SIDES OF REEL AS SHOWN ON THIS DRAWING.
 - 6 THE MATERIAL OF THE EMBOSSED CARRIER TAPE REFERS TO THE TABLE.
 7. THE REEL IS POLYETHYLENE PACKAGED WITH A DRY AGENT INSIDE FOR MOISTURE-PROOF PACKAGING.
 8. FOR THE STORAGE OF 168 HOURS OR MORE AFTER OPENING THE PACKAGE, KEEP THE PRODUCTS UNDER MOISTURE PROOF CONDITIONS.
 9. EXCEPT ON THE MATING SURFACE, COMPONENT INFLATION DOES NOT AFFECT THE PRODUCTS PERFORMANCE.

STYLE AND DIMENSION OF REEL

SUPPLIER
QUANTITY
PART No.
CODE No.
DATE OF MANUFACTURED

DETAIL OF PART No. LABEL

生産月日	年 月 日
図番	CL543-****-**-21
品名	DF3DZ-*P-2H(21)
納入数量	1000k口
納入者	ヒロセ電機(株)

HRS	DRAWING NO.	EDC3-305941-11
	PART NO.	DF3DZ-*P-2H(21)
	CODE NO.	CL543