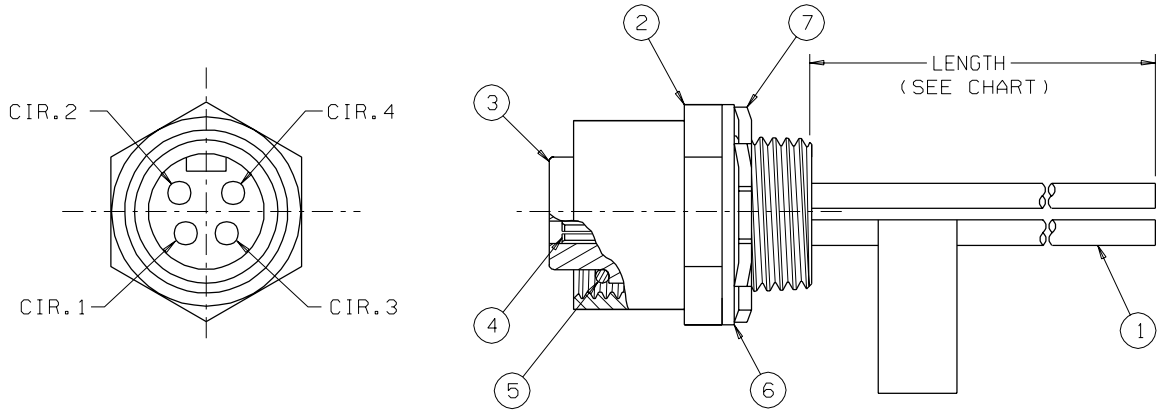


PART NO.	LENGTH
849150069	2M
849150070	3M
849150071	4M
849150072	5M

REV	DATE	ECN NO.	APPVD BY	REL BY
A	2-17-00	UM2000-0441 PRD. REL.	DW	
B	10-25-00	UM2001-0125		


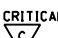
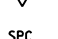



P1

1	BRN
2	WHT
3	BLU
4	BLK

WIRING DIAGRAM

ITEM	QTY	DESCRIPTION	MATERIAL/FINISH
7	1	LOCKNUT	STEEL/ZINC PLATED
6	1	GASKET	NEOPRENE
5	1	O-RING	BUNA-N/COLOR:BLACK
4	4	CONTACT, SOCKET	CU ALLOY/GOLD PLATED
3	1	INSERT, SOCKET, 4/C	PVC/COLOR:YELLOW
2	1	RCPT. SHELL, INT. THD.	ALUMINUM/BLACK ANODIZED
1	SEE CHART	WIRE, 16 AWG.	PVC INSULATED

QUALITY SYMBOLS MAJOR  CRITICAL  SPC 	UNLESS SPECIFIED: ALL DIMENSIONS IN INCHES GENERAL TOLERANCES: 3 PLACE ±.005 2 PLACE ±.01 ANGULAR ±2°	SCALE --- DWG SIZE B	 THIRD ANGLE PROJECTION	REVISE ON CAD ONLY	
	APPROVED BY & DATE DW 2-24-00	DRAWN BY & DATE GF 2-17-00	CHECKED BY & DATE SU 2-24-00	TITLE: MINI-C, RECEPTACLE, FEMALE, 4 POLE, 16 AWG., EURO	MOLEX INCORPORATED Orange, CA 92868
	Uti-Mate CAGE CODE 58967	PART NO. SEE CHART	DRAWING NO. SD-84915-0070	92868	SHEET NO. 1 OF 1
	THIS DRAWING CONTAINS INFORMATION THAT IS PROPRIETARY TO MOLEX INCORPORATED AND SHOULD NOT BE USED WITHOUT WRITTEN PERMISSION.			REV B	1