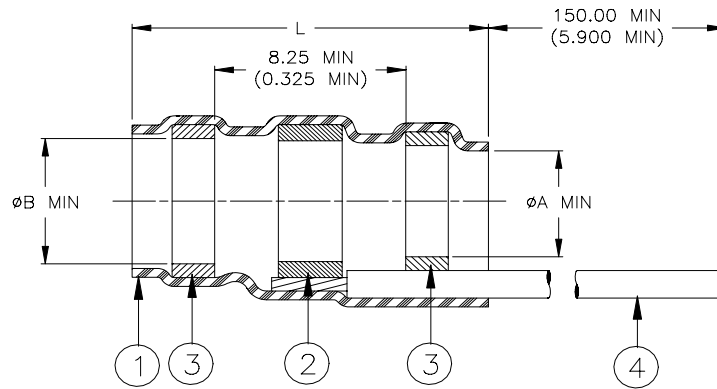


SPECIFICATION CONTROL DRAWING



Product Revision		Ident. Code	Product Dimensions			Cable Dimensions			
Product Name			$L \pm 1.75$ ($L \pm 0.070$)	ϕA min	ϕB min	ϕD max	ϕE max	ϕF min	ϕG min
SO63-1-W3-GA-9	A	SO631R	16.50 (0.650)	1.90 (0.075)	2.65 (0.105)	1.90 (0.075)	2.65 (0.105)	0.90 (0.035)	0.50 (0.020)
SO63-2- W3-GA-9	A	SO632R	16.50 (0.650)	2.65 (0.105)	3.68 (0.145)	2.65 (0.105)	3.68 (0.145)	1.40 (0.055)	0.75 (0.030)
SO63-3- W3-GA-9	A	SO633R	16.50 (0.650)	4.30 (0.170)	5.08 (0.200)	4.30 (0.170)	5.08 (0.200)	2.15 (0.085)	1.25 (0.050)
SO63-4- W3-GA-9	A	SO634R	19.10 (0.750)	5.95 (0.235)	6.45 (0.255)	5.95 (0.235)	6.45 (0.255)	3.30 (0.130)	1.80 (0.070)
SO63-5- W3-GA-9	A	SO635R	19.10 (0.750)	7.00 (0.275)	7.60 (0.300)	7.00 (0.275)	7.60 (0.300)	4.30 (0.170)	2.50 (0.100)

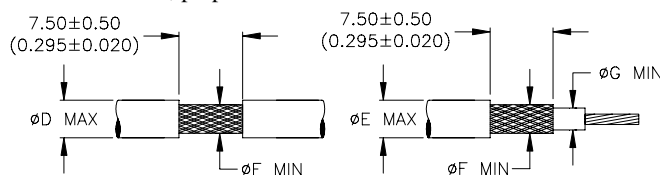
MATERIALS

- INSULATION SLEEVE:** Heat-shrinkable, transparent blue, radiation cross-linked modified polyvinylidene fluoride.
- SOLDER PREFORM WITH FLUX AND THERMAL INDICATOR:**
 SOLDER: TYPE Sn63 per ANSI/J-STD-006.
 FLUX: TYPE ROL1 per ANSI/J-STD-004.
 THERMAL INDICATOR: Fusible ring, melt point: 221°C.
- MELTABLE RINGS:** Environment resistant thermoplastic. Color: blue.
- GROUND LEAD:** MIL-W-22759/33-GA-9 (Raychem 55A0114-GA-9) HSCA silver-plated stranded wire. Color: white.
See part number guide for gauge information.

APPLICATION

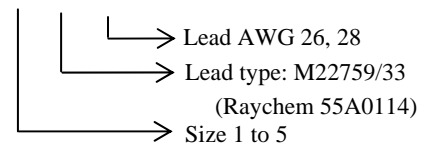
- These parts will provide a shield termination assembly which will meet the requirements of SAE-AS83519/2 when installed in accordance with Raychem RCPS-100-70 on cables rated for at least 125°C, meeting the dimensional criteria listed, having tin or silver plated shields. See M83519 or consult Raychem for compatible insulation material.
- Temperature rating: -55°C to +150°C.

For best results, prepare the cable as shown:



Part Number Guide:

SO 63-X-W 3-GA-9



Parts shall be noted with identification code per table.
"G" is the minimum diameter on which the sleeve will seal.

		Tyco Electronics Corporation 300 Constitution Drive, Menlo Park, CA. 94025, U.S.A.				TITLE: SOLDERSLEEVE DEVICE WITH PRE-INSTALLED LEAD, IMMERSION RESISTANT	
Unless otherwise specified dimensions are in millimeters. [Inches dimensions are shown in brackets]				DOCUMENT NO.: SO63-X-W3-GA-9			
TOLERANCES: 0.00 N/A 0.0 N/A 0 N/A		ANGLES: N/A ROUGHNESS IN MICRON		Tyco Electronics reserves the right to amend this drawing at any time. Users should evaluate the suitability of the product for their application.		PROD. REV.: SEE TABLE	
PREPARED BY: mforonda		DCR NUMBER: D040010		REPLACES: ---		DATE: 20-Jan-04	
CAGE CODE : 06090		SCALE: ---		SIZE: A		SHEET: 1 of 1	

If this document is printed it becomes uncontrolled. Check for the latest revision.