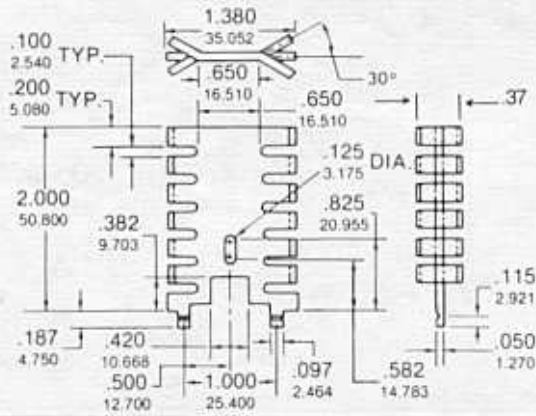
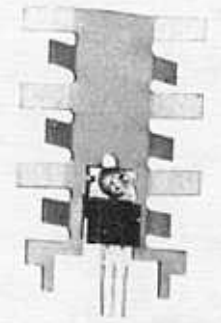
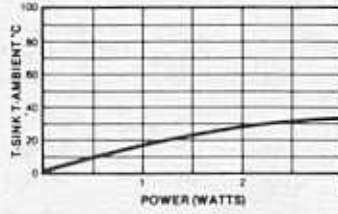


# Standard Heat Sinks



Vertical board mounted cooler.

Material... 1100-H14 Aluminum  
Finish..... Black Anodize  
or Tin Plate

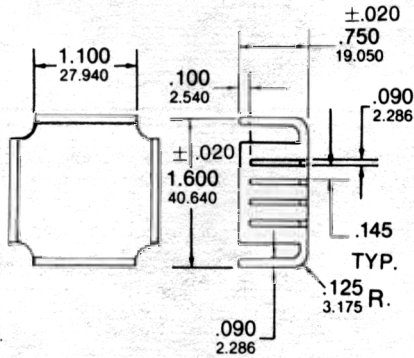


7-311

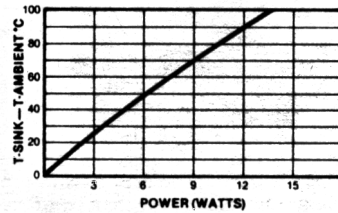
Suggested hole patterns:

DEVICE	HOLE PATTERN
TO-66	03A
TO-3	01D
TO-220	14X
TO-220-2	14A
TO-3	01M

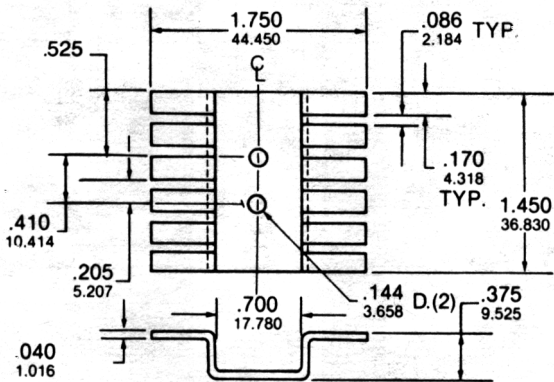
Other hole patterns available.  
See pages 27-32.



Material... 1100-H14 Aluminum  
Finish..... Black Anodize

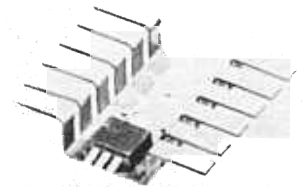
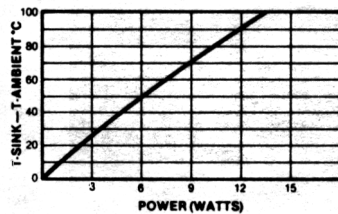


7-312

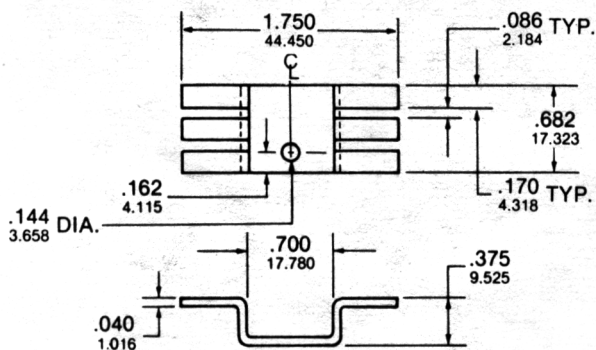


Low Profile.

Material... 1100-H14 Aluminum  
Finish..... Black Anodize

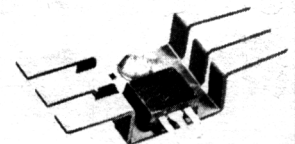
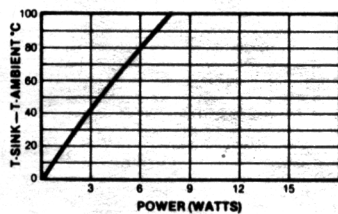


7-320



Low Profile.

Material... 1100-H14 Aluminum  
Finish..... Black Anodize



7-321

## Low Power