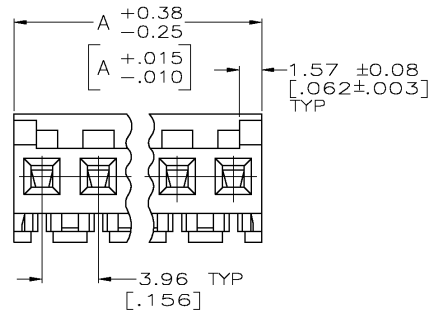
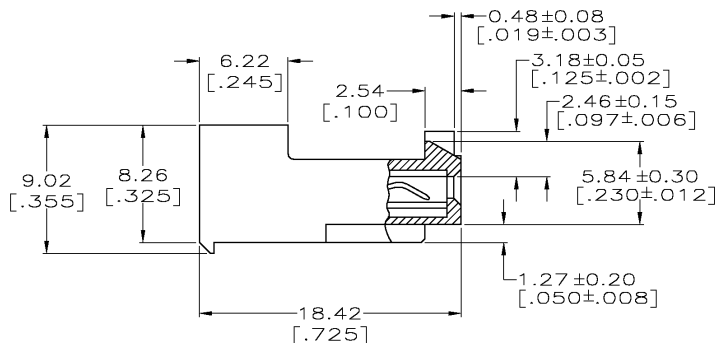
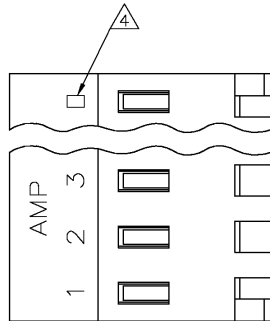


THIS DRAWING IS UNPUBLISHED. RELEASED FOR PUBLICATION  
 © COPYRIGHT BY TYCO ELECTRONICS CORPORATION. ALL RIGHTS RESERVED.

LOC		DIST		REVISIONS			
CM	OO	P	LTR	DESCRIPTION	DATE	OWN	APVD
		F		REV PER ECN 0G3B-0349-03	09JUL03	SC	DB



- 1 MATERIAL: CONNECTOR - NYLON UL94-V2 (ORANGE)  
CONTACTS - 0.30[.012] THICK COPPER ALLOY  
(BRIGHT TIN-LEAD 0.00203[.000080] MIN. THICK FOR CONTACTS 643817-2 THRU 2-643817-4).  
(BRIGHT TIN PLATE 0.00305[.000120] MIN. THICK FOR CONTACTS 3-643817-2 THRU 5-643817-4).
- 2. CONTACTS ACCEPT 18 AWG WIRE WITH 2.41[.095] MAX INSULATION DIAMETER.
- 3. CONTACTS MUST ACCEPT 1.14±0.03[.045] POST AND REMAIN LOCKED IN POSITION.
- 4 IDENTIFICATION NUMBER FOR LAST CIRCUIT MAY NOT APPEAR ON ALL ASSEMBLIES.
- 5. DIMENSIONS IN BRACKETS ARE IN INCHES.
- 6. HOUSING FEATURES ARE: CLOSED END WITH LOCKING RAMP AND POLARIZING TAB.

YES	95.10[3.744]	24	5-643817-4
YES	91.13[3.588]	23	5-643817-3
YES	87.17[3.432]	22	5-643817-2
YES	83.21[3.276]	21	5-643817-1
YES	79.25[3.120]	20	5-643817-0
YES	75.29[2.964]	19	4-643817-9
YES	71.32[2.808]	18	4-643817-8
YES	67.36[2.652]	17	4-643817-7
YES	63.40[2.496]	16	4-643817-6
YES	59.44[2.340]	15	4-643817-5
YES	55.47[2.184]	14	4-643817-4
YES	51.51[2.028]	13	4-643817-3
YES	47.55[1.872]	12	4-643817-2
YES	43.59[1.716]	11	4-643817-1
YES	39.62[1.560]	10	4-643817-0
YES	35.66[1.404]	9	3-643817-9
YES	31.70[1.248]	8	3-643817-8
YES	27.74[1.092]	7	3-643817-7
YES	23.77[.936]	6	3-643817-6
YES	19.81[.780]	5	3-643817-5
YES	15.85[.624]	4	3-643817-4
YES	11.89[.468]	3	3-643817-3
YES	7.92[.312]	2	3-643817-2
NO	95.10[3.744]	24	2-643817-4
NO	91.13[3.588]	23	2-643817-3
NO	87.17[3.432]	22	2-643817-2
NO	83.21[3.276]	21	2-643817-1
NO	79.25[3.120]	20	2-643817-0
NO	75.29[2.964]	19	1-643817-9
NO	71.32[2.808]	18	1-643817-8
NO	67.36[2.652]	17	1-643817-7
NO	63.40[2.496]	16	1-643817-6
NO	59.44[2.340]	15	1-643817-5
NO	55.47[2.184]	14	1-643817-4
NO	51.51[2.028]	13	1-643817-3
NO	47.55[1.872]	12	1-643817-2
NO	43.59[1.716]	11	1-643817-1
NO	39.62[1.560]	10	1-643817-0
NO	35.66[1.404]	9	643817-9
NO	31.70[1.248]	8	643817-8
NO	27.74[1.092]	7	643817-7
NO	23.77[.936]	6	643817-6
NO	19.81[.780]	5	643817-5
NO	15.85[.624]	4	643817-4
NO	11.89[.468]	3	643817-3
NO	7.92[.312]	2	643817-2
LEADFREE	DIM A	NO. OF CIRCUITS	PART NO.

THIS DRAWING IS A CONTROLLED DOCUMENT.

APPROVED: S. CARPENTER 09JUL2003	DATE: 09JUL2003	DESIGNED: D. BOSSI 09JUL2003	DATE: 09JUL2003
DIMENSIONS: INCHES		TOLERANCES UNLESS OTHERWISE SPECIFIED:	
		0 PLC ± 1 PLC ± 2 PLC ± 3 PLC ± 0.15 [.005] 4 PLC ± ANGLES ±	
MATERIAL:		FINISH:	
DWG: S. CARPENTER 09JUL2003 CHK: D. BOSSI 09JUL2003 APVD: D. BOSSI 09JUL2003 PRODUCT SPEC: 108-1051 APPLICATION SPEC: 114-1020		Tyco Electronics Corporation Harrisburg, PA 17105 NAME: MTA 156 CONNECTOR ASSEMBLY, 18 AWG, STANDARD SIZE: A2 CAGE CODE: 00779 DRAWING NO: 643817 WEIGHT: CUSTOMER DRAWING SCALE: 4:1 SHEET: 1 OF 1 REV: F	

