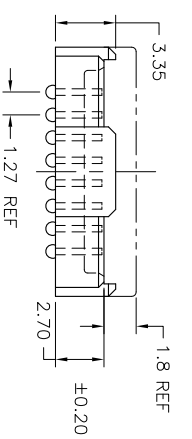
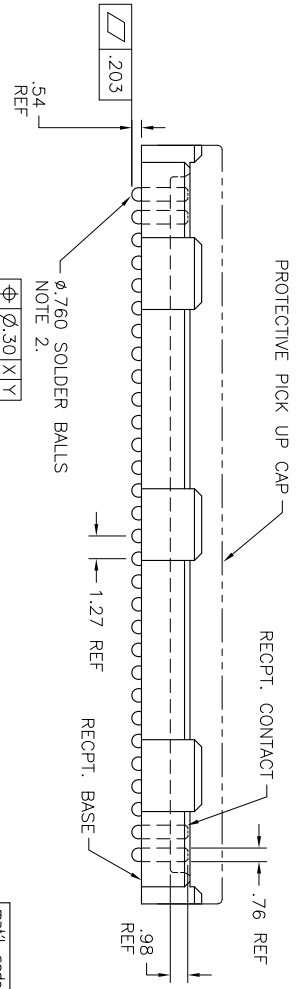
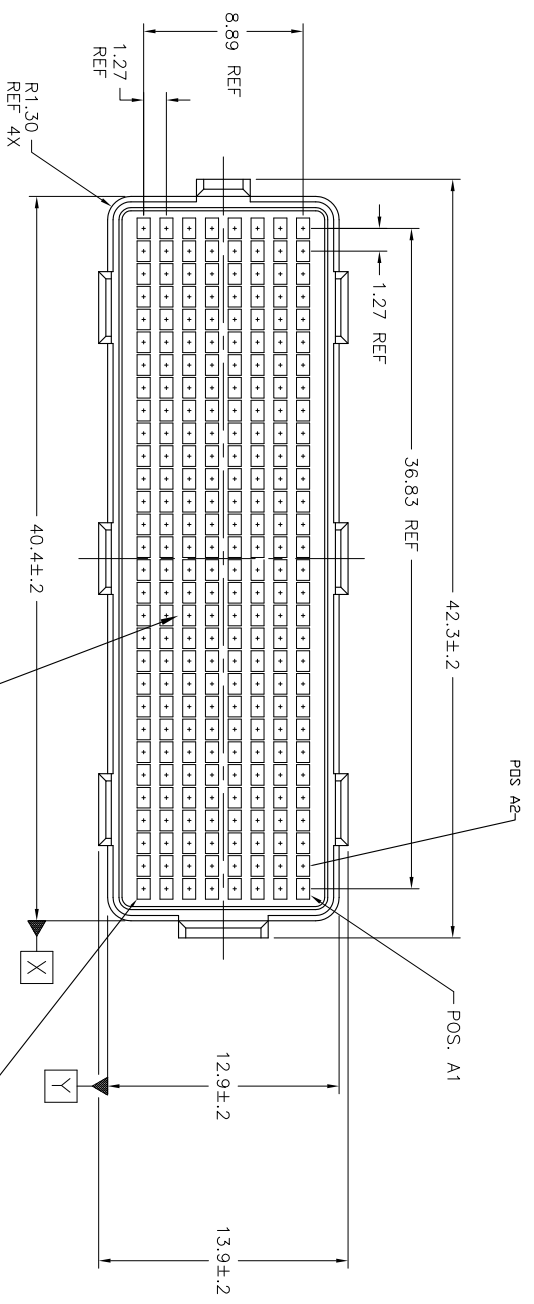


PRODUCT NUMBER
SEE SHEET 3



| mat'l code | SEE NOTE 1 | surface | tolerance | projection | product family |
|----------------|------------|---------------------|------------|---------------------------------------|----------------|
| Ln | ecn no. | dr | date | ASME Y14.5 | ASME Y14.5 |
| M | V06-0360 | LP | 2006/06/22 | angles | X *3 |
| N | V-13467 | DOCH012-11-1P | | tolerances unless otherwise specified | XX *0 |
| P | V-16678 | DCH 2014-1-7 0' 42" | | | XXX *050 |
| R | V-17551 | DOCH014-04-2dr | | D WAUGHEN | 11.12.97 |
| S | V-20116 | RWB 2015-1-28 emgr | | TELMKE | 11.12.97 |
| L | V04-0940 | VS | 10/18/04 | appd | TELMKE |
| sheet revision | S | S | S | S | |
| index | Sheet | 1 | 2 | 3 | |



title
4mm RECPT. ASSY.
8 X 30 = 240 POS.

scale 1:1

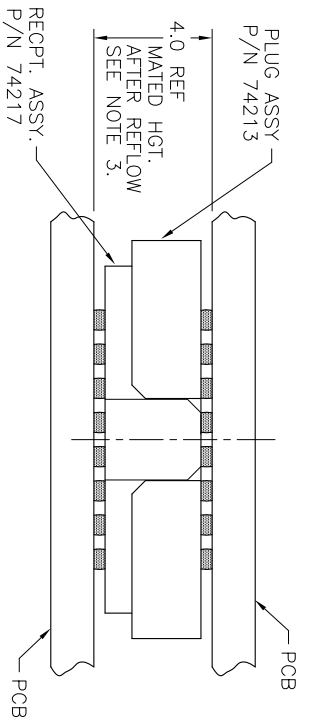
dwg no
74217

sheet 1 of 3 size
A4

type
CUSTOMER Drawing

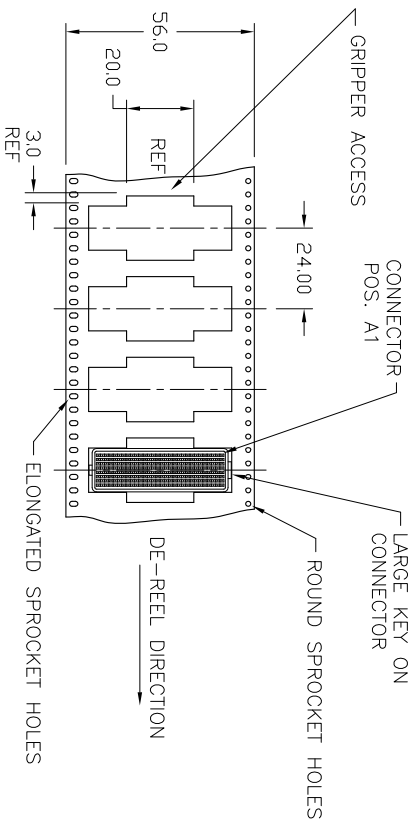
PICK UP CAP
FLAT AREA POS. A1

STENCIL MATED CONNECTOR OUTLINE
ONTO BOARD.

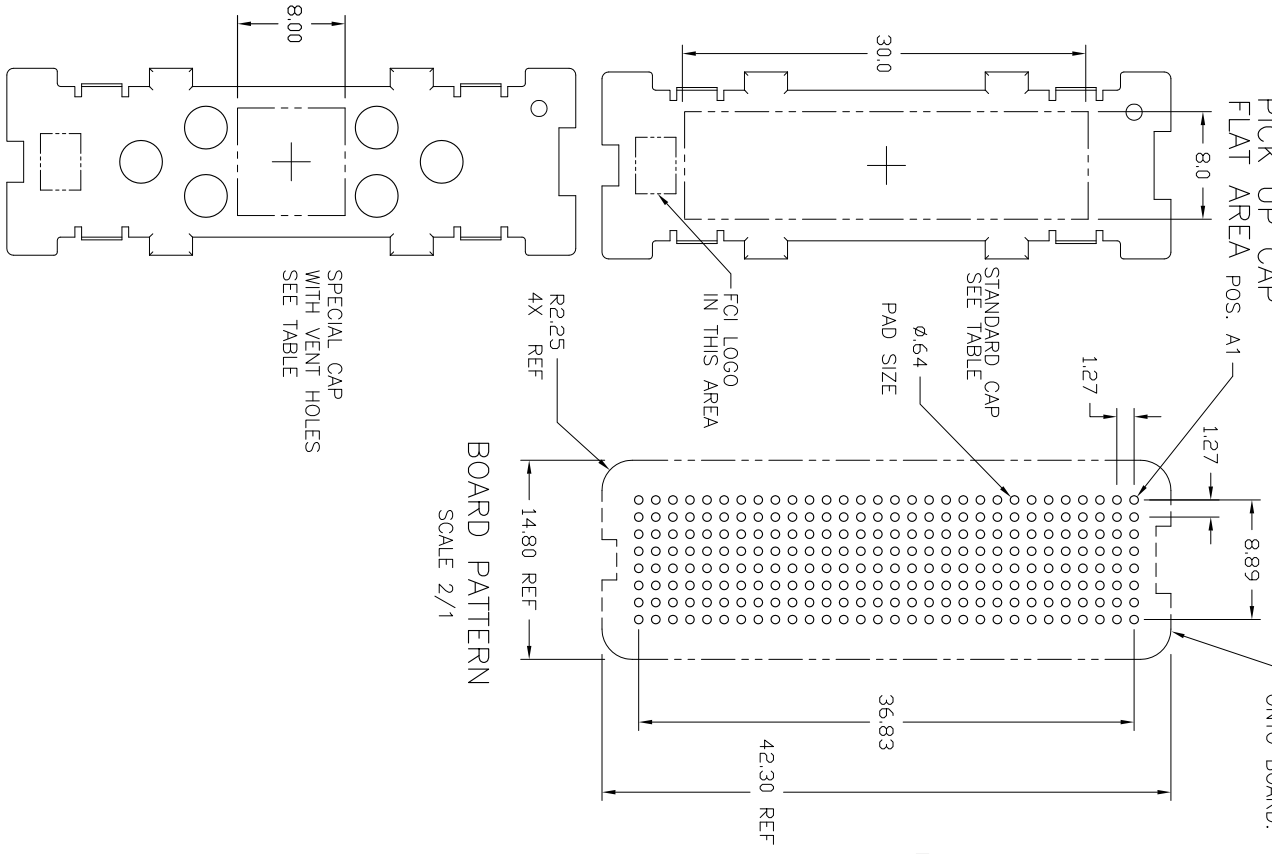


MATED HEIGHT AFTER REFLOW IS BASED ON ϕ .64mm PAD (METAL-DEFINED)
AND .13mm SOLDER PASTE STENCIL THICKNESS. SEE NOTE 3.

END VIEW - MATED CONNECTORS



TAPE & REEL PACKAGING SCALE NONE
PER EIA 481-3



| | | | | | | | | | |
|------------|------------|---------|------------|---------------------------------------|------------|------------|----|----------------|------------------------------------|
| mat'l code | SEE NOTE 1 | surface | ASME Y14.5 | tolerance | ASME Y14.5 | projection | MM | product family | MEG-Arroy |
| lfr | ecn no | dr | date | tolerances unless otherwise specified | | | | title | 4mm RECPT. ASSY 8 X 30 = 24POS. |
| S | | | | angles | X +3 | | | dwg no | 74217 |
| | | | | or +2' | XX +0 | | | sheet 2 of 3 | size |
| | | | | | XXX +050 | | | scale | 1:1 |
| | | dr | D WAUGHEN | 11.12.97 | | | | type | CUSTOMER Drawing |
| | | enfr | TLEMKE | 11.12.97 | | | | | |
| | | chr | TLEMKE | 11.12.97 | | | | | |
| | | apdd | TLEMKE | 11.12.97 | | | | | |
| sheet | revision | | | | | | | | |
| index | Sheet | | | | | | | | |

| PRODUCT NUMBER | NOTES | CONTACT PLATING | SOLDER BALL | CAP STYLE |
|----------------|-------|--------------------------|---|-------------------------|
| 74217-001 | | 15u" (.38um) Au OVER Ni | SnPb STANDARD | STANDARD |
| 74217-001LF | 5 6 | | SnAgCu LEAD FREE STANDARD | STANDARD |
| 74217-091 | | 15u" (.38um) GXT OVER Ni | SnPb STANDARD | STANDARD |
| 74217-091LF | 5 6 | | SnAgCu LEAD FREE STANDARD | STANDARD |
| 74217-093 | | 15u" (.38um) GXT OVER Ni | SnPb SPECIAL WITH VENT HOLES | SPECIAL WITH VENT HOLES |
| 74217-093LF | 5 6 | | SnAgCu LEAD FREE SPECIAL WITH VENT HOLES | SPECIAL WITH VENT HOLES |
| 74217-093BF | 8 | | SnPb SPECIAL WITH VENT HOLES | SPECIAL WITH VENT HOLES |
| 74217-093BLF | 5 6 8 | 15u" (.38um) GXT OVER Ni | SnAgCu LEAD FREE SPECIAL WITH VENT HOLES | SPECIAL WITH VENT HOLES |
| 74217-101 | | 30u" (.76um) Au OVER Ni | SnPb STANDARD | STANDARD |
| 74217-101LF | 5 6 | | SnAgCu LEAD FREE STANDARD | STANDARD |
| 74217-191 | | 30u" (.76um) GXT OVER Ni | SnPb STANDARD | STANDARD |
| 74217-191LF | 5 6 | | SnAgCu LEAD FREE STANDARD | STANDARD |
| 74217-201 | | SEE NOTE 4. | SnPb STANDARD | STANDARD |
| 74217-201LF | 5 6 | | SnAgCu LEAD FREE STANDARD | STANDARD |
| 74217-291 | | SEE NOTE 4. | SnPb STANDARD | STANDARD |
| 74217-291LF | 5 6 | | SnAgCu LEAD FREE STANDARD | STANDARD |

NOTES:

1. MAT'L:

HOUSING: LCP

CONTACT: COPPER ALLOY

PLATING

CONTACT: (SEE TABLE ON SHEET1)
 SOLDER BALL: (SEE TABLE ON SHEET1)
 EUTECTIC SnPb OR LEAD FREE
 95.5Sn/4Ag/0.5Cu

2. SOLDER BALLS WILL NOT BE PERFECT SPHERICAL SHAPE DUE TO REFLOW ATTACHMENT.

3. MATED HEIGHT EFFECTED BY CUSTOMER'S PCB PAD SIZE, PLATING, SOLDER REFLOW PROFILE, & SOLDER PASTE.

4. PLATING FOR -2XX SERIES DASH NOS. MEETS THE REQUIREMENTS OF CENTRAL OFFICE ENVIRONMENT, (25 YEAR LIFE EXPECTANCY).

5. FOR PROPER APPLICATION FOLLOW FCI APPLICATION SPECIFICATION GS-20-033 LEAD FREE SOLDER BALLS WILL NOT SOLDER PROPERLY IN A LEADED SOLDER PROCESS DUE TO A HIGHER REFLOW TEMPERATURE. LEAD FREE PRODUCT IS THEREFORE NOT BACKWARDS COMPATIBLE WITH LEADED OR SOME SOLDERING APPLICATIONS. REFERENCE FCI APPLICATION SPECIFICATION

6. THIS PRODUCT MEETS EUROPEAN UNION DIRECTIVES AND OTHER COUNTRY REGULATIONS AS DESCRIBED IN GS-47-0004 PRODUCT MEETING THIS DIRECTIVE IS IDENTIFIED IN THE LOT CODE NUMBER MARKED ON EACH PART BY HAVING AN "X" IN THE SEVENTH CHARACTER POSITION

7. VISIBLE KNT LINES ANYWHERE ON THE FLOOR OF THE HOUSING ARE PERMITTED. OPEN KNT LINES ANYWHERE ARE NOT PERMITTED.

8. FOR THESE DASH NUMBERS, PRODUCT IS BERYLLIUM FREE.

| mat'l code | SEE NOTE 1 | surface | tolerance | projection | product family |
|------------|------------|---------|--------------------|---------------------------------------|----------------|
| lit | ecg no | dr | date | ASME Y14.5 | ASME Y14.5 |
| S | | | | tolerances unless otherwise specified | |
| | | angles | X *3 | | |
| | | dr | XX *0 | | |
| | | dr | XXX *050 | | |
| | | dr | D.WAUGHEN 11.12.97 | | |
| | | engr | T.LEMKE 11.12.97 | | |
| | | chr | T.LEMKE 11.12.97 | | |
| | | apprd | T.LEMKE 11.12.97 | | |
| sheet | revision | | | | |
| index | sheet | | | | |



4mm RECPT. ASSY
 8 X 30 = 24POS.
 sheet 3 of 3
 size A4
 CUSTOMER Drawing