

4

3

2

1

THIS DRAWING IS UNPUBLISHED.

RELEASED FOR PUBLICATION

© COPYRIGHT

ALL RIGHTS RESERVED.

LOC DIST


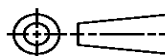
REVISIONS

P	LTR	DESCRIPTION	DATE	DWN	APVD

REPLACED BY OCEAN STYLE APPLICATOR PART NUMBER

FOR REPLACEMENT PARTS FOR APPLICATOR REFER TO ADDITIONAL PAGE(S). SPARE PARTS KIT (IF LISTED) WILL REMAIN AVAILABLE.

THE REPLACEMENT OCEAN STYLE APPLICATOR HAS THE SAME TERMINATOR/PRESS INTERFACE AS APPLICATOR

THIS DRAWING IS A CONTROLLED DOCUMENT.		DWN	 TE Connectivity		
DIMENSIONS:		CHK			
TOLERANCES UNLESS OTHERWISE SPECIFIED:		APVD	NAME		
		PRODUCT SPEC	RESTRICTED TO		
		APPLICATION SPEC	SIZE	CAGE CODE	DRAWING NO
MATERIAL	FINISH	WEIGHT	A3	C-	
		SCALE	SHEET	OF	REV

PART NUMBER	REV	FIRST USED	TERMINATOR	FEED TYPE	DESCRIPTION
1238043-1	S	-	LEADMAKER	MECH POST FEED	CUTS CARRIER
1238043-2	S	-	BENCH	MECH PRE FEED	CUTS CARRIER
1238043-6	S	-	LEADMAKER	MECH POST FEED	CONTINUOUS CARRIER
7-1238043-1	S	-	LEADMAKER	MECH POST FEED	-1 AND SPARE PARTS
7-1238043-2	S	-	BENCH	MECH PRE FEED	-2 AND SPARE PARTS
7-1238043-6	S	-	LEADMAKER	MECH POST FEED	-6 AND SPARE PARTS
7-1238043-7	P	-	-	-	SPARE PARTS KIT

CRIMP DATA (AMP TERMINAL)			
TERMINAL NAME: SOCKET			
CRIMP	SIZE	TYPE	RANGE
WIRE	1.40 [.055 IN]	F	0.2-0.5mm ² Δ
INSUL	1.83 [.072 IN]	0	1.15-1.6 [.045-.063 IN]
WIRE STRIP LENGTH		APPL INSTRUCTION	
3.05-3.35 [.120-.132 IN]		408-8322	

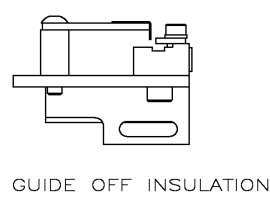
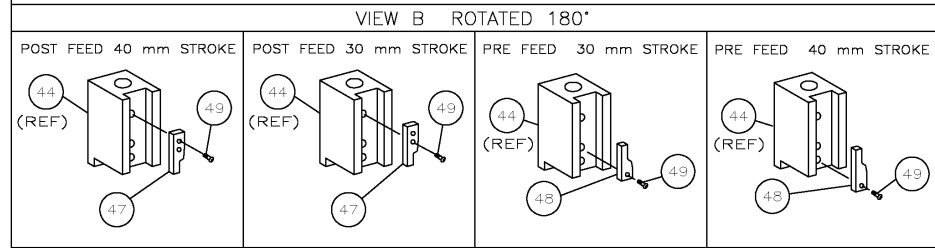
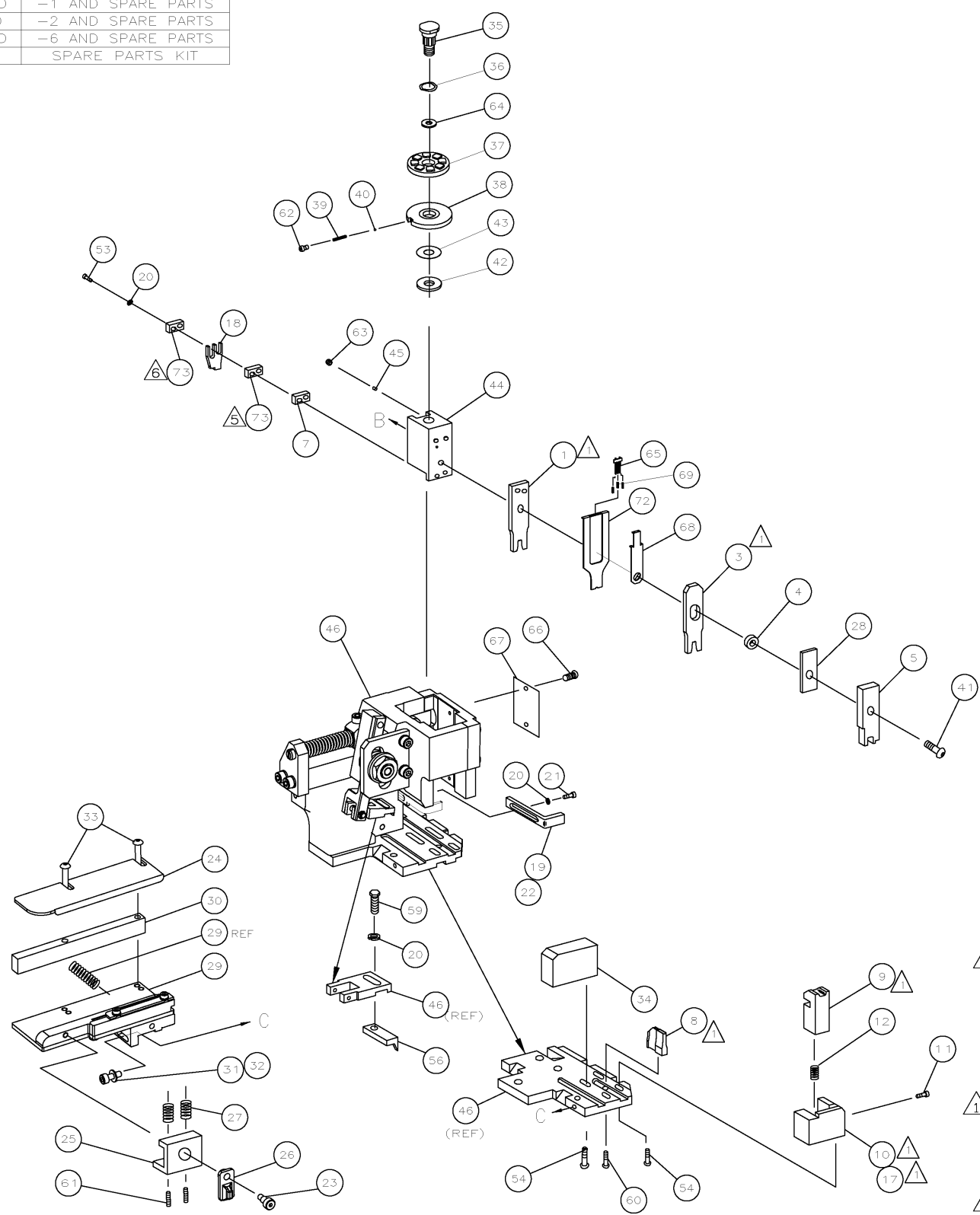
TERMINAL	-	FEED	-
APPL SPEC	114-18021		7.0 [.276 IN]

TERMINALS APPLIED			
928999	1703296	-	-
968220	-	-	-
928918	-	-	-
968893	-	-	-
1241918	-	-	-
1394702	-	-	-
1394408	-	-	-
1534116	-	-	-

WIRE SIZE	CRIMP HEIGHT	PIN PN & LENGTH [IN]
0.50 mm ² Δ	0.86 ±0.03 [.034 ±0.001 IN]	5-354779-0 [.3240]
0.35 mm ²	0.76 ±0.03 [.030 ±0.001 IN]	5-354779-9 [.3285]
0.25 mm ²	0.72 ±0.03 [.028 ±0.001 IN]	6-354779-3 [.3305]

SET UP GAGE	LAYOUT
458637-3	L2377

- Δ 1. RECOMMENDED SPARE PARTS.
- 2. GREASE RAM, CAM, CAM FOLLOWER AND FEED ROD LIGHTLY.
- 3. LUBRICATE DAILY PER THE APPLICATOR INSTRUCTION SHEET SUPPLIED WITH THE APPLICATOR.
- Δ 4. 0.5mm² WIRE NOT SUITED FOR AIR BAG APPLICATIONS.
- Δ 5. ITEM 81 POSITION FOR TERMINAL 968893.
- Δ 6. ITEM 81 POSITION FOR ALL TERMINALS EXCEPT 968893.



QTY	REQD	PER	ASSY	PART NO	DESCRIPTION	ITEM NO	
-	1	1	1	1	1-240641-3	SPACER, DEP, REAR	73
-	1	1	1	1	1490525-1	DEPRESSOR, WIRE	72
-	1	1	1	1	1238043	PRINT, APPLICATOR LOG SHEET	71
-	1	1	1	1	1338705-1	DOCUMENTATION PACKAGE	70
-	2	2	2	2	1-23147-4	SPRING, DEPRESSOR	69
-	1	1	1	1	1490524-2	SPACER, DEPRESSOR	68
-	1	1	1	1	461264-1	PLATE, IDENTIFICATION	67
-	2	2	2	2	21017-2	SCR,DRIVE(#2x.19)ID PLATE	66
-	1	1	1	1	1424350-1	HOLDER, PIN, WIRED	65
-	1	1	1	1	986950-1	WASHER, FLAT PRECISION	64
-	1	1	1	1	3-18031-0	SCR,SKT_SET(M6X6 LW)RAM	63
-	1	1	1	1	18023-9	SCR,SHC(M4X6)INS DISC	62
-	2	2	2	2	2-18032-5	SCR,SET(M5X20)DRAG	61
-	1	1	1	1	18024-7	SCR,BHC(M4X10)ANVIL	60
-	1	1	1	1	5-18022-2	SCR,HEX(M4X8)FEED FINGER	59
-	-	-	-	-	-	-	58
-	-	-	-	-	-	-	57
-	1	1	1	1	1338685-1	PAWL, FEED	56
-	-	-	-	-	-	-	55
-	4	4	4	4	18024-8	SCR,BHC(M4X12)SHEAR HOLDER	54
-	2	2	2	2	1-18023-1	SCR, SHC(M4X10)TERM HLD DWN	53
-	-	-	-	-	-	-	52
-	-	-	-	-	-	-	51
-	-	-	-	-	-	-	50
-	1	1	1	1	18024-3	SCR,BHC(M3X10)CAM	49
-	-	-	-	-	1338675-1	CAM, PRE FEED 30 & 40 mm ST	48
-	1	-	1	-	1338676-1	CAM, POST FEED 30 & 40 mm ST	47
-	1	1	1	1	1320999-3	APPLICATOR BASIC SUBASSY	46
-	1	1	1	1	690191-1	PLUG, NYLON	45
-	1	1	1	1	1338660-1	RAM	44
-	1	1	1	1	690125-1	WASHER, LAMINATED	43
-	1	1	1	1	690124-1	WASHER, RAM	42
-	1	1	1	1	2-18024-6	SCR,BHC(M8X25)RAM	41
-	1	1	1	1	23241-1	BALL, STEEL	40
-	1	1	1	1	2-22278-7	SPRING, COMPRESSION	39
-	1	1	1	1	1320922-1	DISC, INSULATION	38
-	1	1	1	1	354777-1	WIRE DISC, PLASTIC	37
-	1	1	1	1	22480-5	WASHER, SPRING	36
-	1	1	1	1	690212-1	POST, RAM	35
-	1	1	1	1	3-1320934-1	TERMINAL SUPPORT	34
-	2	2	2	2	1-18024-0	SCR,BHC(M4X20)STRIP GUIDE	33
-	1	1	1	1	18027-2	WASHER, FLAT(M4)	32
-	1	1	1	1	1-18023-2	SCR,SKT_CAP(M4X12)MOUNT BLOCK	31
-	1	1	1	1	1320908-4	SPACER, STRIP GUIDE	30
-	1	1	1	1	1633073-1	STRIP GUIDE PLATE ASSY	29
-	1	1	1	1	2-455888-0	SPACER, FRONT SHEAR DEP	28
-	2	2	2	2	1-22284-0	SPRING, DRAG	27
-	1	1	1	1	356835-1	LEVER, DRAG RELEASE	26
-	1	1	1	1	240792-1	DRAG, TERMINAL	25
-	1	1	1	1	1320928-1	GUIDE, STRIP (REAR)	24
-	1	1	1	1	980371-4	SCR,SHC SHLD	23
-	1	-	1	-	690472-2	STRIPPER	22
-	1	1	1	1	1-18023-1	SCR,SHC(M4X10)STRIPPER	21
-	4	4	4	4	18025-2	WASHER,LOCK(M4)STRIPPER	20
-	-	-	-	-	690472-1	STRIPPER	19
-	1	1	1	1	879657-2	HOLD DOWN TERMINAL	18
-	1	-	-	-	1338684-1	HOLDER, SHEAR, FRONT (NO-CUT)	17
-	-	-	-	-	-	-	16
-	-	-	-	-	-	-	15
-	-	-	-	-	-	-	14
-	-	-	-	-	-	-	13
-	1	1	1	1	3-22280-3	SPRING, SHEAR	12
-	1	1	1	1	356885-4	STOP, SHEAR	11
-	-	1	-	1	1320921-1	HOLDER, SHEAR, FRONT (CUT)	10
-	1	1	1	1	462006-1	SHEAR, FLOAT (FRONT)	9
1	2	2	2	1	1-1338690-2	ANVIL	8
-	1	1	1	1	4-240641-2	SPACER, DEPRESSOR (REAR)	7
-	-	-	-	-	-	-	6
-	1	1	1	1	1-455889-4	DEPRESSOR, SHEAR (FRONT)	5
-	1	1	1	1	238011-8	SPACER, BLOCK CRIMPER	4
1	2	2	2	1	8-904741-0	CRIMPER, INSULATION	3
-	-	-	-	-	-	-	2
1	2	2	2	1	1-562108-5	CRIMPER, WIRE	1

THIS DRAWING IS A CONTROLLED DOCUMENT.

TYCO ELECTRONICS CORPORATION
 Harrisburg, PA 17105-3608

PRODUCT SPEC: SIDE FEED HD-1 APPLICATOR

SIZE: A1
 CASE CODE: 00779
 DRAWING NO: 1238043

CUSTOMER DRAWING