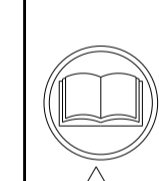


ATLANTIC VERSION TERMINATOR INTERFACE ADAPTER	PART NUMBER	REVISION	DESCRIPTION	FEED TYPE	APPLICATOR STYLE CONVERSION CHART							
					CONVERT TO	PART NUMBERS REQUIRED						
						PNEUMATIC FEED	2119950-1	1338685-1	5-18022-5	2119641-1	2119799-1	2063440-1
	2266002-1	C	FINE CRIMP HEIGHT ADJUST	MECHANICAL	SERVO LATCH PLATE	2119951-1	-	8-2266002-5	1901094-3	1-1752354-7	2168400-6 (QUANTITY 2)	
	2266002-2	C	FINE CRIMP HEIGHT ADJUST	PNEUMATIC	SMART APPLICATOR	2161326-1	-	8-2266002-4	-	-	-	
	2266002-5	C	FINE CRIMP HEIGHT ADJUST	SERVO LATCH PLATE	MECHANICAL FEED	2119949-1	1338685-1	5-18022-5	2119653-1	-	-	
	2266002-6	C	NON-CRIMP HEIGHT ADJUST	SERVO LATCH PLATE	SERVO LATCH PLATE	2119951-1	-	8-2266002-5	1901094-3	1-1752354-7	2168400-6 (QUANTITY 2)	
	2266002-7	C	FINE CRIMP HEIGHT ADJUST	NONE	SMART APPLICATOR	2161326-1	-	8-2266002-4	-	-	-	
	7-2266002-7	C	CRIMP TOOLING KIT	-	MECHANICAL FEED	2119949-1	1338685-1	5-18022-5	2119653-1	-	-	
						PNEUMATIC FEED	2119950-1	1338685-1	5-18022-5	2119641-1	2119799-1	2063440-1

APPLICATOR DATA		
CRIMP	SIZE	TYPE
WIRE	1.57 mm [.062]	F
INSUL	3.35 mm [.132]	O
APPLICATOR INSTRUCTIONS 408-10389		

TERMINAL DATA: MOLEX(FORD) TERMINAL FORD CRIMP SPECIFICATION			
TERMINAL NAME: TERMINAL			
WIRE STRIP LENGTH		INSULATION DIAMETER RANGE	
4.30-5.00 mm [.169-.197 IN]		Ø1.40-1.70 mm [.055-.067 IN]	
TERMINAL APPLICATION SPECIFICATION	NONE		
TERMINALS APPLIED			
TE TERMINAL	MOLEX(FORD) TERMINAL	TE SEAL	MOLEX(FORD) SEAL
2113354-1	34080-1106	1949248-1	97BG-10C930-SBA
2113354-2	34080-1003		A-0370B
2113354-3	34080-1206		

WIRE SIZE	CRIMP HEIGHT mm [INCH]	CRIMP HEIGHT REFERENCE SETTING
0.50mm2	1.10+/-0.05 [.043+/- .002]	7.2
22 AWG	1.00+/-0.05 [.039+/- .002]	8.3



- 1 RECOMMENDED SPARE PARTS
- 2 GREASE BEARING SURFACES LIGHTLY
- 3. LUBRICATE DAILY PER THE APPLICATOR INSTRUCTION SHEET SUPPLIED WITH THE APPLICATOR.
- 4 APPLICATOR SPECIFIC DATA TO BE ENTERED INTO BLANK MEMORY CHIP AT ASSEMBLY. SEE BELOW FOR PART NUMBER:
 MECHANICAL FEED WITH "SMART APPLICATOR" CONVERSION: 8-2266002-4
 PNEUMATIC FEED WITH "SMART APPLICATOR" CONVERSION: 8-2266002-4
 SERVO FEED WITH "FINE CRIMP HEIGHT ADJUST": 8-2266002-5
 SERVO FEED WITH "NON-CRIMP HEIGHT ADJUST": 8-2266002-6
- 5. ADJUSTMENT OF THE STRIPPER MAY BE REQUIRED WHEN MOVING THE APPLICATOR BETWEEN BENCH AND LEADMAKER APPLICATIONS.
- 6 APPLY PART NUMBER 1-23419-5 LOCTITE TO THREADS OF ITEMS 62, 180 & 242. FOR -6 ONLY APPLY PART NUMBER 1-23419-5 LOCTITE TO THREADS OF ITEMS 37, 180 & 242.
- 7 GREASE THREADS, GROOVE AND O-RING ON ITEMS 35 & 252.
- 8 MAGNET, ITEM 166 MUST BE ORIENTED CORRECTLY IN ORDER TO PROPERLY ACTUATE THE COUNTER.
- 9 CRIMP HEIGHT REFERENCE SETTING WAS THE SETTING USED WHEN THE APPLICATOR WAS QUALIFIED AT THE FACTORY. ADJUSTMENT MAY BE NECESSARY WHEN RUNNING APPLICATOR IN THE FIELD.
- 10 SPARE FEED CAM STORAGE LOCATION REFER TO INSTRUCTION SHEET FOR ADDITIONAL INFORMATION.
- 11 TO CONVERT THE APPLICATOR TO A NON-CARRIER CUTTING STYLE, REMOVE ITEM 13 AND ATTACH TO THE LOCATION ON THE BACK SIDE OF THE HOUSING. REFER TO INSTRUCTION SHEET FOR ADDITIONAL INFORMATION.
- 12 WHEN ASSEMBLING A NON CRIMP HEIGHT ADJUST APPLICATOR (-6) USE SHIMS FROM ITEM 260 TO ACHIEVE A NOMINAL SHIM HEIGHT OF 4.70.
- 13 THIS APPLICATOR APPLIES TERMINAL WITH A SEAL.
- 14 APPLY TORO-SEAL IN ALLEN SOCKET TO FILL HOLE AFTER FLAT HD HAS BEEN ADJUSTED TO CORRECT HEIGHT AT QUALIFICATION. APPLY #1-23419-5 LOC-TITE TO THREADS.

***WARNING**
 ON INSTALLATION, SET WIRE DISC, ITEM 40 TO LARGEST WIRE SIZE SETTING. USE OF SETTINGS BELOW MINIMUM REQUIRED CRIMP HEIGHT SETTING WILL CAUSE DAMAGE TO CRIMP TOOLING.

- 5 THIS APPLICATOR IS SPECIFIC FOR USE IN A STRIPPER SEAL TERMINATING UNIT.
- 6 TERMINAL LUBRICANT IS RECOMMENDED.

- 2 2 2 2 2	22281-8	SPRING, COMPRESSION	269
- 2 2 2 2 2	2-18032-5	SCR, SET, FLT POINT M5 X 20.0	268
- 1 1 1 1 1	980371-4	SCR, SKT HD SHLDR 5.0 DIA X 6.0	267
- 1 1 1 1 1	356835-1	LEVER, DRAG RELEASE	266
- 1 1 1 1 1	240792-1	DRAG, TERMINAL	265
- 2 2 2 2 2	2168083-1	SCR, SKT HD CAP, RoHS, M3 X 8.0	264
- 1 1 1 1 1	2-690438-2	FRONT STRIP GUIDE	263
- 1 1 1 1 1	1-22281-8	SPRING, COMPRESSION	262
- 1 1 1 1 1	2168083-6	SCR, SKT HD CAP, RoHS, M5 X 65	261
- - 1 - - -	2119957-2	APPLICATOR SHIM PACK	260
- 1 - 1 1 1	8-21084-0	O-RING, .676 ID, .070 DIA. MAT.	252
- - - - 1 -	2119640-1	PUSH ROD, AIR FEED	250
- - - - 1 -	2079988-1	BUSHING, LCH5-12, MISUMI	249
- - - - 1 -	2119641-1	FEED CAM, AIR FEED	248
- 1 - 1 1 1	2119798-1	DETENT PIN	247
- 1 - 1 1 1	1-22279-3	SPRING, COMPRESSION	246
- - 1 - - -	2119758-1	RAM, AMP STYLE, SIDE FEED, NON-ADJ.	245
-77 -7 -6 -5 -2 -1	PART NO	DESCRIPTION	ITEM NO

ATLANTIC VERSION
 Shown on sheets 1 of 4 & 2 of 4
 (Pacific version shown on sheets 3 of 4 & 4 of 4)

SET UP GAUGE	LOC	DIST	REVISIONS			
2119599-1	A	66	REV	DATE	BY	APPV
			A	RELEASED	28AUG2013	CC
			A1	ECR-13-014437	13SEP2013	XZ
			B	ECR-13-019057	06NOV2013	XZ
			C	ECR-14-000637	15JAN2014	XZ

- 1 1 1 1 1	2119082-7	CAM, SNAIL, INSULATION ADJUSTMENT	244
- 1 1 1 1 1	2079764-1	WASHER, WAVE SPRING, CREST-TO-CREST	243
- 1 1 1 1 1	2119083-1	RETAINER, INSULATION DIAL	242
- 1 1 1 1 1	7-18023-7	SCR, SKT HD CAP M3 X 4.0	241
- - 2 2 - -	2168400-6	SHCS, LOW HEAD, RoHS, M5 X 16	240
- - - - 1 -	2119580-1	MECHANICAL FEED ASSEMBLY	239
- - - - 1 -	2063440-1	AIR FEED MODULE	238
- - 1 1 - -	2119740-2	TAG, IDENTIFICATION	213
- - 1 1 - -	1901094-3	SPACER, FEEDER	198
- 1 1 1 1 1	1-1752354-7	STANDOFF, HOLD-DOWN	180
- 1 1 1 1 1	993111-1	PIN, SLOTTED SPRING 3.0 X 20.0	177
- 1 1 1 1 1	8-22280-7	SPRING, COMPRESSION	176
- 1 1 1 1 1	1752353-2	GUIDE PIN, HOLDDOWN	175
- 1 1 1 1 1	1901680-2	GUIDE PIN, HOLDDOWN	174
- - - - 2 -	21045-3	RING, RETAIN, EXTERN, 3/16 CRESCENT	172
- 1 1 1 1 1	994969-1	MAGNET, RARE EARTH HIGH ENERGY	166
- REF REF REF REF REF	994970-2	COUNTER, MAGNETIC	164
- - - - 1 -	240638-1	SPRING, FEED FINGER	163
- - - - 1 -	3-23627-7	PIN, RETAIN, GRVD, 3/16 X .854	137
- - - - 1 -	2119799-1	HOLDER, FEED FINGER, AF	136
- - REF REF - -	SEE NOTE 4	MEMORY CHIP, PROGRAMMED	135
- - 1 1 - -	1633743-1	SERVO FEED LATCH ASM	133
- 1 1 1 1 1	1-18028-2	WASHER, FLAT, REG M4	119
- - REF REF - -	2119944-1	FEED FINGER ASSEMBLY, SF	117
- 1 1 1 1 1	2119955-1	ASSY, LUBRICATOR, SIDE FEED	113
- 1 1 1 1 1	455888-5	SPACER, CRIMPER	82
- 1 1 1 1 1	2119956-1	DOCUMENTATION PACKAGE	71
- 1 1 1 1 1	2119791-5	DEPRESSOR, WIRE	70
- 1 - - 1 1	2119740-1	TAG, IDENTIFICATION	67
- 2 2 2 2 2	2168078-1	SCREW, DRIVE, RH, RoHS, 2 x .188	66
- 1 - 1 1 1	2119793-1	LIMITER, ADJUSTMENT BOLT	63
- 3 - 3 3 3	992763-5	SCR, SET, SOC, CONE POINT, M3 x 4.0	62
- 1 1 1 1 1	2079383-4	SCR, BHSC, RoHS (M4 X 8)	60
- - - - 1 1	5-18022-5	SCR, HEX HD CAP, M4 X 6.0	59
- 1 1 1 1 1	985575-3	SCR, FLT SKT HD CAP M3 X 10.0	57
- - - - 1 1	1338685-1	PAWL, FEED	56
- 4 4 4 4 4	2168400-1	SHCS, LOW HEAD, RoHS, M4 X 12	54
- 1 1 1 1 1	1-5018030-0	NUT, HEX, REG, RoHS, M3.5	52
- 1 1 1 1 1	1901681-1	HOLDDOWN, TERMINAL	51
- - - - 1 2	18023-9	SCR, SKT HD CAP M4 X 6.0	49
- - - - - 1	2119652-1	FEED CAM, PRE FEED	48
- - - - - 1	2119653-1	FEED CAM, POST FEED	47
- 1 1 1 1 1	2-2119656-1	APPLICATOR BASIC ASSEMBLY, SF	46
- 1 - 1 1 1	2119370-1	RAM, AMP STYLE, SIDE FEED	44
- 1 1 1 1 1	2079383-7	SCR, BHSC, RoHS (M8 X 25)	41
- 1 - 1 1 1	2119645-1	DISC, NUMBERED FA WIRE ADJUSTMENT	40
- 1 - 1 1 1	2119957-1	APPLICATOR SHIM PACK	39
- 1 1 1 1 1	2119644-1	RAM WASHER, PRECISION	38
- 1 1 1 1 1	2119085-1	FA HEAD, ATLANTIC STYLE	37
- 1 - 1 1 1	2119092-1	BOLT, ADJUSTMENT	35
- 1 1 1 1 1	1752356-3	SUPPORT, TERMINAL	34
- 2 2 2 2 2	2079383-5	SCR, BHSC, RoHS (M4 X 20)	33
- 1 1 1 1 1	2161328-1	HEX HEAD, FLANGED, M5 x 8mm LONG	32
- 1 1 1 1 1	1-1320908-2	SPACER, STRIP GUIDE	30
- 1 1 1 1 1	1-1901086-8	PLATE, STRIP GUIDE	29
- 1 1 1 1 1	455888-3	SPACER, CRIMPER	28
- 1 1 1 1 1	1320928-6	STRIP GUIDE	24
- 1 1 1 1 1	2168083-2	SCR, SKT HD CAP, RoHS, M4 X 8.0	21
- 1 1 1 1 1	1-18028-2	WASHER, FLAT, REG M4	20
- 1 1 1 1 1	2119533-1	STRIPPER, SIDE FEED	19
- 1 1 1 1 1	2119806-1	INSERT, SHEAR	13
- 1 1 1 1 1	3-22280-3	SPRING, COMPRESSION	12
- 1 1 1 1 1	1-356885-4	STOP, SHEAR	11
- 1 1 1 1 1	2119805-1	SHEAR HOLDER, FRONT	10
- 1 1 1 1 1	318707-1	FLOATING SHEAR, FRONT	9
1 1 1 1 1	1-1633918-6	ANVIL, COMBINATION	8
- - - - - -	-	-	7
- - - - - -	-	-	6
- 1 1 1 1 1	2119781-1	DEPRESSOR, SHEAR	5
- 1 1 1 1 1	3-238011-3	BLOCK, CRIMPER SPACER	4
1 1 1 1 1	6-1633965-1	CRIMPER, INSULATION O PREMIUM	3
- 1 1 1 1 1	455888-4	SPACER, CRIMPER	2
1 1 1 1 1	8-1633609-5	CRIMPER, WIRE	1
-77 -7 -6 -5 -2 -1	PART NO	DESCRIPTION	ITEM NO

DIMENSIONS:		TOLERANCES UNLESS OTHERWISE SPECIFIED:		DRAWING NO	
mm	0 PLC ±.5	1 PLC ±.5	2 PLC ±.5	3 PLC ±.5	4 PLC ±.5
	ANGLES ±.0001				
MATERIAL	FINISH	WEIGHT	SCALE	SHEET	REV
			1:2	1 OF 4	C

TE Connectivity
 Harrisburg, PA 17105-3608
Ocean Side Feed Applicator
 SIZE: A1 CASE CODE: 00779 ©=2266002
 Customer Accessible Production Drawing

PACIFIC VERSION TERMINATOR INTERFACE ADAPTER	PART NUMBER	REVISION	DESCRIPTION	FEED TYPE	APPLICATOR STYLE CONVERSION CHART						
					CONVERT TO	PART NUMBERS REQUIRED					
	2-2266002-1	C	FINE CRIMP HEIGHT ADJUST	MECHANICAL	PNEUMATIC FEED	2119950-1	1338685-1	5-18022-5	2119641-2	2119799-1	2063440-1
					SERVO LATCH PLATE	2119951-1	-	8-2266002-5	1901094-3	1-1752354-7	2168400-6 (QUANTITY 2)
					SMART APPLICATOR	2161326-1	-	8-2266002-4	-	-	-
	2-2266002-2	C	FINE CRIMP HEIGHT ADJUST	PNEUMATIC	MECHANICAL FEED	2119949-1	1338685-1	5-18022-5	2119653-2	-	-
					SERVO LATCH PLATE	2119951-1	-	8-2266002-5	1901094-3	1-1752354-7	2168400-6 (QUANTITY 2)
					SMART APPLICATOR	2161326-1	-	8-2266002-4	-	-	-
	2-2266002-5	C	FINE CRIMP HEIGHT ADJUST	SERVO LATCH PLATE	MECHANICAL FEED	2119949-1	1338685-1	5-18022-5	2119653-2	-	-
					PNEUMATIC FEED	2119950-1	1338685-1	5-18022-5	2119641-2	2119799-1	2063440-1
	2-2266002-7	C	FINE CRIMP HEIGHT ADJUST	NONE	-	-	-	-	-	-	-
	7-2266002-7	C	CRIMP TOOLING KIT	-	-	-	-	-	-	-	-

APPLICATOR DATA		
CRIMP	SIZE	TYPE
WIRE	1.57 mm [.062]	F
INSUL	3.35 mm [.132]	O
APPLICATOR INSTRUCTIONS 408-10389		

TERMINAL DATA: MOLEX(FORD) TERMINAL FORD CRIMP SPECIFICATION			
TERMINAL NAME: TERMINAL			
WIRE STRIP LENGTH 4.30-5.00 mm [1.69-.197 IN]		INSULATION DIAMETER RANGE Ø1.40-1.70 mm [.055-.067 IN]	
TERMINAL APPLICATION SPECIFICATION	NONE	-	-
TERMINALS APPLIED			
TE TERMINAL	MOLEX(FORD) TERMINAL	TE SEAL	MOLEX(FORD) SEAL
2113354-1	34080-1106	1949248-1	97BG-10C930-SBA
2113354-2	34080-1003	-	A-0370B
2113354-3	34080-1206	-	-

WIRE SIZE	CRIMP HEIGHT mm [INCH]	CRIMP HEIGHT REFERENCE SETTING
0.50mm2	1.10+/-0.05 [.043+/-0.002]	7.2
22 AWG	1.00+/-0.05 [.039+/-0.002]	8.3

- 1. RECOMMENDED SPARE PARTS
- 2. GREASE BEARING SURFACES LIGHTLY
- 3. LUBRICATE DAILY PER THE APPLICATOR INSTRUCTION SHEET SUPPLIED WITH THE APPLICATOR.
- 4. APPLICATOR SPECIFIC DATA TO BE ENTERED INTO BLANK MEMORY CHIP AT ASSEMBLY. SEE BELOW FOR PART NUMBER:
 MECHANICAL FEED WITH "SMART APPLICATOR" CONVERSION: 8-2266002-4
 PNEUMATIC FEED WITH "SMART APPLICATOR" CONVERSION: 8-2266002-4
 SERVO FEED WITH "FINE CRIMP HEIGHT ADJUST": 8-2266002-5
- 5. ADJUSTMENT OF THE STRIPPER MAY BE REQUIRED WHEN MOVING THE APPLICATOR BETWEEN BENCH AND LEADMAKER APPLICATIONS.
- 6. APPLY PART NUMBER 1-23419-5 LOCTITE TO THREADS OF ITEMS 62, 180 & 242.
- 7. GREASE THREADS, GROOVE AND O-RING ON ITEMS 139 & 152.
- 8. MAGNET MUST BE ORIENTED CORRECTLY IN ORDER TO PROPERLY ACTUATE THE COUNTER.
- 9. CRIMP HEIGHT REFERENCE SETTING WAS THE SETTING USED WHEN THE APPLICATOR WAS QUALIFIED AT THE FACTORY. ADJUSTMENT MAY BE NECESSARY WHEN RUNNING APPLICATOR IN THE FIELD.
- 10. SPARE FEED CAM STORAGE LOCATION REFER TO INSTRUCTION SHEET FOR ADDITIONAL INFORMATION.
- 11. TO CONVERT THE APPLICATOR TO A NON-CARRIER CUTTING STYLE, REMOVE ITEM 13 AND ATTACH TO THE LOCATION ON BACK SIDE OF THE HOUSING. REFER TO INSTRUCTION SHEET FOR ADDITIONAL INFORMATION.
- 12. THIS APPLICATOR APPLIES TERMINAL WITH A SEAL.
- 13. APPLY TORQ-SEAL IN ALLEN SOCKET TO FILL HOLE AFTER FLAT HD HAS BEEN ADJUSTED TO CORRECT HEIGHT AT QUALIFICATION. APPLY #1-23419-5 LOC-TITE TO THREADS.

***WARNING**
 ON INSTALLATION, SET WIRE DISC, ITEM 40 TO LARGEST WIRE SIZE SETTING. USE OF SETTINGS BELOW MINIMUM REQUIRED CRIMP HEIGHT SETTING WILL CAUSE DAMAGE TO CRIMP TOOLING.

- 14. THIS APPLICATOR IS SPECIFIC FOR USE IN A STRIPPER SEAL TERMINATING UNIT.
- 15. TERMINAL LUBRICANT IS RECOMMENDED.

- 2	2	2	2	22281-8	SPRING, COMPRESSION	269	
- 2	2	2	2	2-18032-5	SCR, SET, FLT POINT M5 X 20.0	268	
- 1	1	1	1	980371-4	SCR, SKT HD SHLDR 5.0 DIA X 6.0	267	
- 1	1	1	1	356835-1	LEVER, DRAG RELEASE	266	
- 1	1	1	1	240792-1	DRAG, TERMINAL	265	
- 2	2	2	2	2168083-1	SCR, SKT HD CAP, RoHS, M3 X 8.0	264	
- 1	1	1	1	2-690438-2	FRONT STRIP GUIDE	263	
- 1	1	1	1	1-22281-8	SPRING, COMPRESSION	262	
- 1	1	1	1	2168083-6	SCR, SKT HD CAP, RoHS, M5 X 65	261	
- 1	1	1	1	2119782-1	FINE ADJUST HEAD ASM, PACIFIC STYLE	251	
- -	-	-	-	2119640-1	PUSH ROD, AIR FEED	250	
- -	-	-	-	2079988-1	BUSHING, LCH5-12, MISUMI	249	
- 1	1	1	1	1-22279-3	SPRING, COMPRESSION	246	
- 1	1	1	1	2119082-7	CAM, SNAIL, INSULATION ADJUSTMENT	244	
- 1	1	1	1	2079764-1	WASHER, WAVE SPRING, CREST-TO-CREST	243	
-77	-27	-25	-22	-21	PART NO	DESCRIPTION	ITEM NO

PACIFIC VERSION
 Shown on sheets 3 of 4 & 4 of 4
 (Atlantic version shown on sheets 1 of 4 & 2 of 4)

SET UP GAUGE	LOC	DIST	REVISIONS					
2119599-1	A	66	P	LTN	DESCRIPTION	DATE	OWN	APVD
-	-	-	-	-	SEE SHEET 1	-	-	-

6	-	1	1	1	1	2119083-1	RETAINER, INSULATION DIAL	242
-	-	1	1	1	1	7-18023-7	SCR, SKT HD CAP M3 X 4.0	241
-	-	-	-	-	-	2168400-6	SHCS, LOW HEAD, RoHS, M5 X 16	240
-	-	-	-	-	-	2119580-1	MECHANICAL FEED ASSEMBLY	239
-	-	-	-	-	-	2063440-1	AIR FEED MODULE	238
-	-	-	-	-	-	2119740-2	TAG, IDENTIFICATION	213
-	-	-	-	-	-	1901094-3	SPACER, FEEDER	198
6	-	1	1	1	1	1-1752354-7	STANDOFF, HOLD-DOWN	180
-	-	1	1	1	1	993111-1	PIN, SLOTTED SPRING 3.0 X 20.0	177
-	-	1	1	1	1	8-22280-7	SPRING, COMPRESSION	176
-	-	1	1	1	1	1752353-2	GUIDE PIN, HOLDDOWN	175
-	-	1	1	1	1	1901680-2	GUIDE PIN, HOLDDOWN	174
-	-	-	-	-	-	21045-3	RING, RETAIN, EXTERN, 3/16 CRESCENT	172
-	-	1	1	1	1	994969-1	MAGNET, RARE EARTH HIGH ENERGY	166
-	-	REF	REF	REF	REF	994970-2	COUNTER, MAGNETIC	164
-	-	-	-	-	-	240638-1	SPRING, FEED FINGER	163
-	-	1	1	1	1	8-21084-1	O-RING, .801 ID, .070 DIA. MAT.	152
-	-	-	-	-	-	2119641-2	FEED CAM, AIR FEED	151
-	-	1	1	1	1	2119798-2	DETENT PIN	145
-	-	1	1	1	1	2079383-8	SCR, BHSC, RoHS (M4 X 16)	144
-	-	4	4	4	4	2168400-5	SHCS, LOW HEAD, RoHS, M4 X 20	143
-	-	-	-	-	-	2119653-2	FEED CAM, POST FEED	142
-	-	1	1	1	1	2-2119656-2	APPLICATOR BASIC ASSEMBLY, SF	141
-	-	1	1	1	1	2119650-1	RAM, ASIAN STYLE, SIDE FEED	140
-	-	1	1	1	1	2119092-2	BOLT, ADJUSTMENT	139
-	-	-	-	-	-	3-23627-7	PIN, RETAIN, GRVD, 3/16 X .854	137
-	-	-	-	-	-	2119799-1	HOLDER, FEED FINGER, AF	136
-	-	REF	REF	REF	REF	-	SEE NOTE 4	135
-	-	-	-	-	-	1633743-1	SERVO FEED LATCH ASM	133
-	-	1	1	1	1	1-18028-2	WASHER, FLAT, REG M4	119
-	-	REF	REF	REF	REF	2119944-1	FEED FINGER ASSEMBLY, SF	117
-	-	1	1	1	1	2119955-1	ASSY, LUBRICATOR, SIDE FEED	113
-	-	1	1	1	1	455888-5	SPACER, CRIMPER	82
-	-	1	1	1	1	2119956-1	DOCUMENTATION PACKAGE	71
-	-	1	1	1	1	2119791-5	DEPRESSOR, WIRE	70
-	-	1	-	1	1	2119740-1	TAG, IDENTIFICATION	67
-	-	2	2	2	2	2168078-1	SCREW, DRIVE, RH, RoHS, 2 x .188	66
-	-	1	1	1	1	2119793-1	LIMITER, ADJUSTMENT BOLT	63
6	-	3	3	3	3	992763-5	SCR, SET, SOC, CONE POINT, M3 X 4.0	62
-	-	-	-	-	-	5-18022-5	SCR, HEX HD CAP, M4 X 6.0	59
-	-	1	1	1	1	985575-3	SCR, FLT SKT HD CAP M3 X 10.0	57
-	-	-	-	-	-	1338685-1	PAWL, FEED	56
-	-	1	1	1	1	1-5018030-0	NUT, HEX, REG, RoHS, M3.5	52
-	-	1	1	1	1	1901681-1	HOLDDOWN, TERMINAL	51
-	-	-	-	-	-	18023-9	SCR, SKT HD CAP M4 X 6.0	49
-	-	-	-	-	-	2119652-1	FEED CAM, PRE FEED	48
-	-	1	1	1	1	2079383-7	SCR, BHSC, RoHS (M8 X 25)	41
-	-	1	1	1	1	2119645-1	DISC, NUMBERED FA WIRE ADJUSTMENT	40
-	-	1	1	1	1	2119957-1	APPLICATOR SHIM PACK	39
-	-	1	1	1	1	2119644-1	RAM WASHER, PRECISION	38
-	-	1	1	1	1	1752356-3	SUPPORT, TERMINAL	34
-	-	2	2	2	2	2079383-5	SCR, BHSC, RoHS (M4 X 20)	33
-	-	1	1	1	1	2161328-1	HEX HEAD, FLANGED, M5 X 8mm LONG	32
-	-	1	1	1	1	1-1320908-2	SPACER, STRIP GUIDE	30
-	-	1	1	1	1	1-1901086-8	PLATE, STRIP GUIDE	29
-	-	1	1	1	1	455888-3	SPACER, CRIMPER	28
-	-	1	1	1	1	1320928-6	STRIP GUIDE	24
-	-	1	1	1	1	2168083-2	SCR, SKT HD CAP, RoHS, M4 X 8.0	21
-	-	1	1	1	1	1-18028-2	WASHER, FLAT, REG M4	20
-	-	1	1	1	1	2119533-1	STRIPPER, SIDE FEED	19
-	-	1	1	1	1	2119806-1	INSERT, SHEAR	13
-	-	1	1	1	1	3-22280-3	SPRING, COMPRESSION	12
-	-	1	1	1	1	1-356885-4	STOP, SHEAR	11
-	-	1	1	1	1	2119805-1	SHEAR HOLDER, FRONT	10
-	-	1	1	1	1	318707-1	FLOATING SHEAR, FRONT	9
-	-	1	1	1	1	1-1633918-6	ANVIL, COMBINATION	8
-	-	-	-	-	-	-	-	7
-	-	-	-	-	-	-	-	6
-	-	1	1	1	1	2119781-1	DEPRESSOR, SHEAR	5
-	-	1	1	1	1	3-238011-3	BLOCK, CRIMPER SPACER	4
-	-	1	1	1	1	6-1633965-1	CRIMPER, INSULATION O PREMIUM	3
-	-	1	1	1	1	455888-4	SPACER, CRIMPER	2
-	-	1	1	1	1	8-1633609-5	CRIMPER, WIRE	1
-77	-27	-25	-22	-21	PART NO	DESCRIPTION	ITEM NO	

DIMENSIONS:		TOLERANCES UNLESS OTHERWISE SPECIFIED:		DATE	BY	APPROVED	NAME
mm	0 PLC ±.05	1 PLC ±.13	2 PLC ±.013	19 JUL 2013	J. CHEN	U. GUO	TE Connectivity
	3 PLC ±.013	4 PLC ±.0001	ANGLES	19 JUL 2013	J. CRUZ		Harrisburg, PA 17105-3608
	FINISH						Ocean Side Feed Applicator
MATERIAL							SIZE CASE CODE DRAWING NO
							A1 00779 C=2266002
							RESTRICTED TO
							Customer Accessible Production Drawing
							SCALE 1:2 SHEET 3 OF 4 REV C

LOC		DIST		REVISIONS			
A	66	P	LTM	DESCRIPTION	DATE	OWN	APVD
		-		SEE SHEET 1			

FEED TYPE MECHANICAL



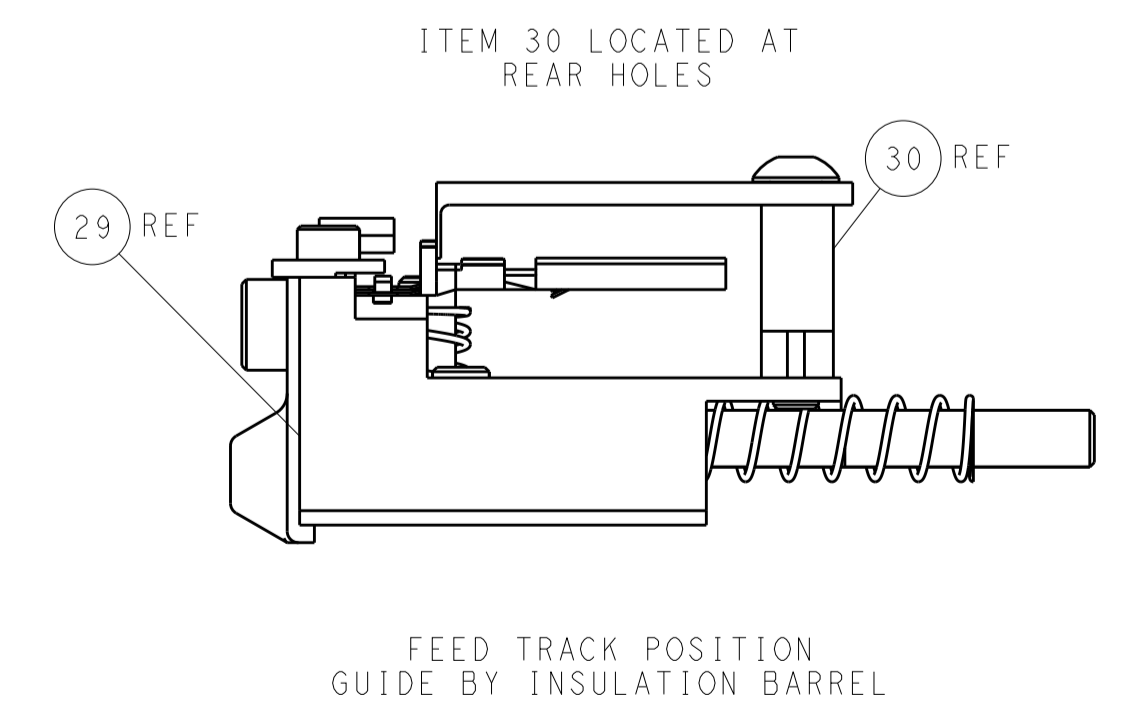
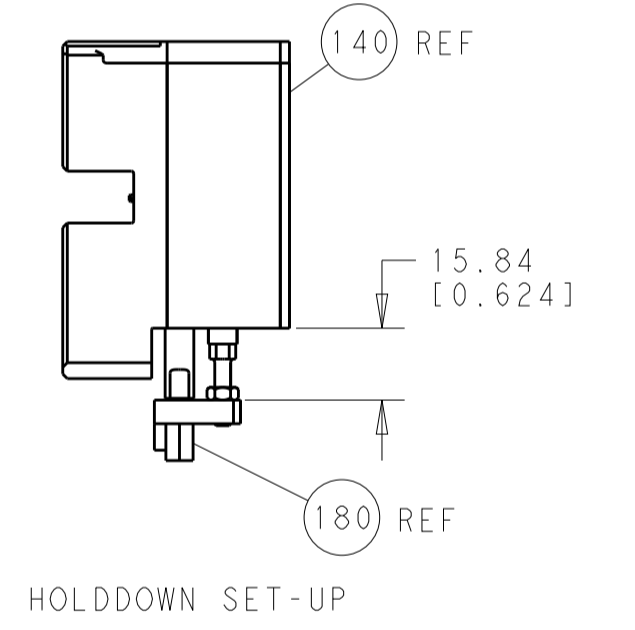
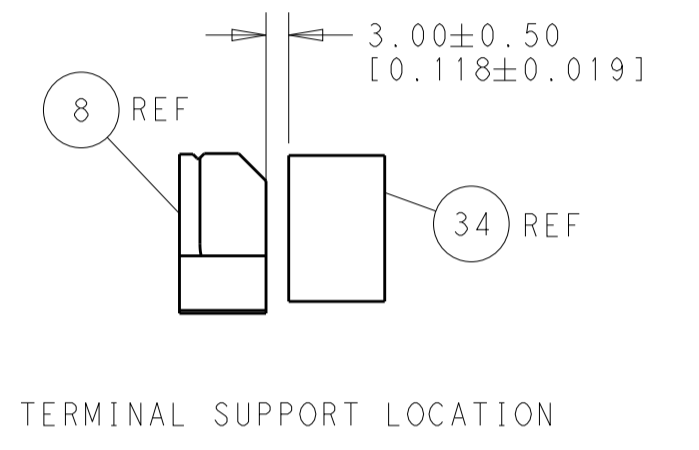
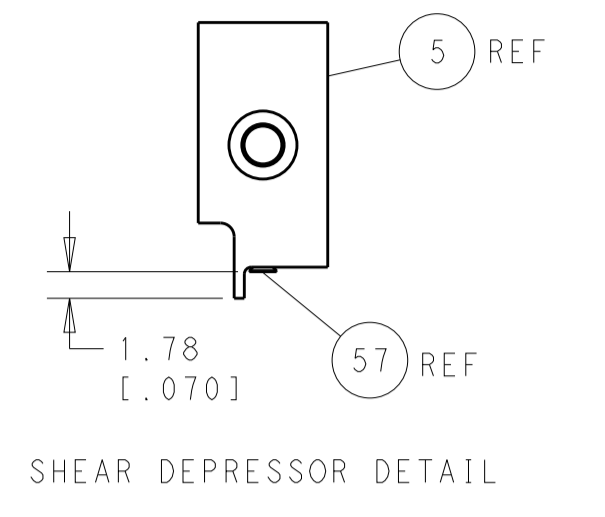
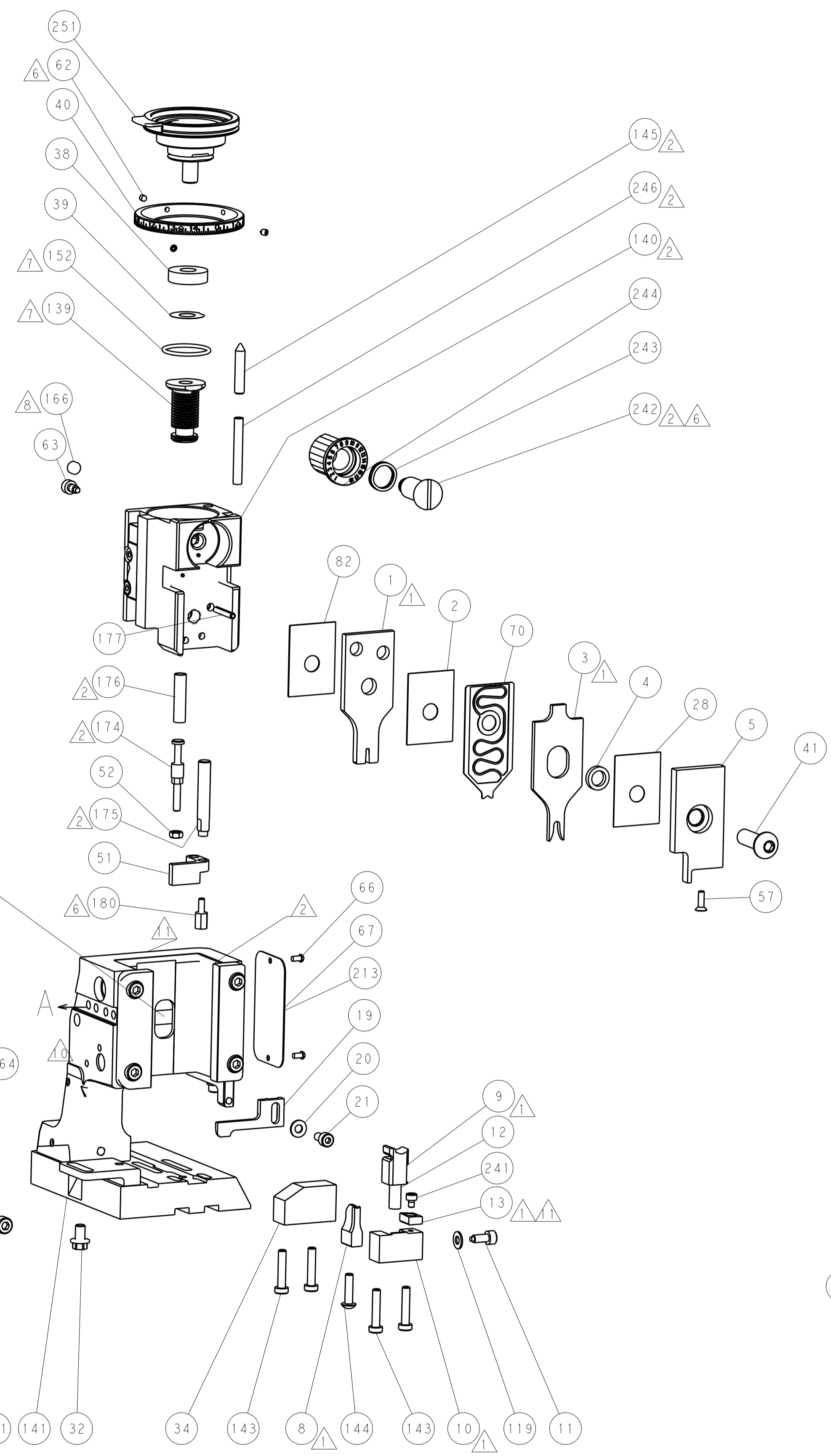
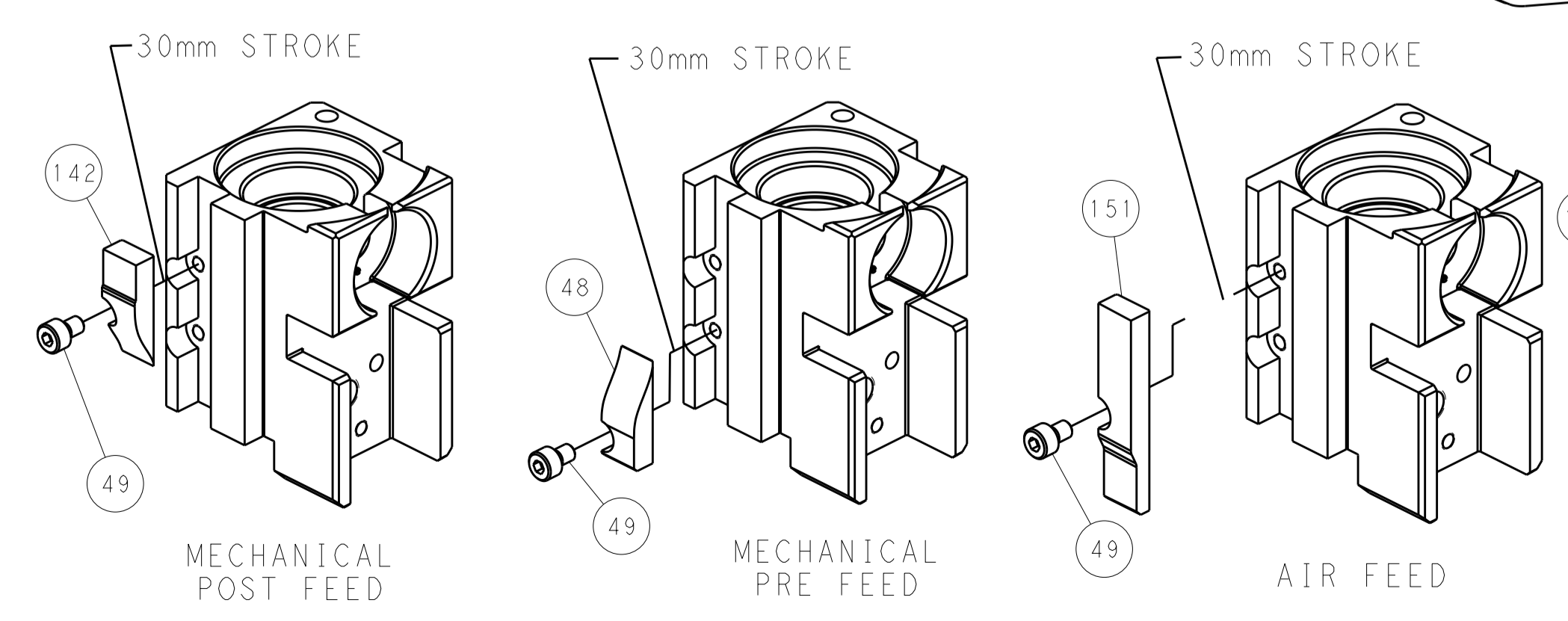
PNEUMATIC



SERVO LATCH PLATE



CAM POSITIONS



PACIFIC VERSION
 Shown on sheets 3 of 4 & 4 of 4
 (Atlantic version shown on sheets 1 of 4 & 2 of 4)

DIMENSIONS:		TOLERANCES UNLESS OTHERWISE SPECIFIED:		DWN C. CHEN 19JUL2013		TE Connectivity	
mm	0 PLC ±0.5	1 PLC ±0.5	2 PLC ±0.13	3 PLC ±0.013	4 PLC ±0.001	APVD J. CRUZ 19JUL2013	Harrisburg, PA 17105-3608
MATERIAL:		FINISH:		NAME Ocean Side Feed Applicator		RESTRICTED TO	
Customer Accessible Production Drawing		SCALE 1:2		SHEET 4 OF 4		REV C	