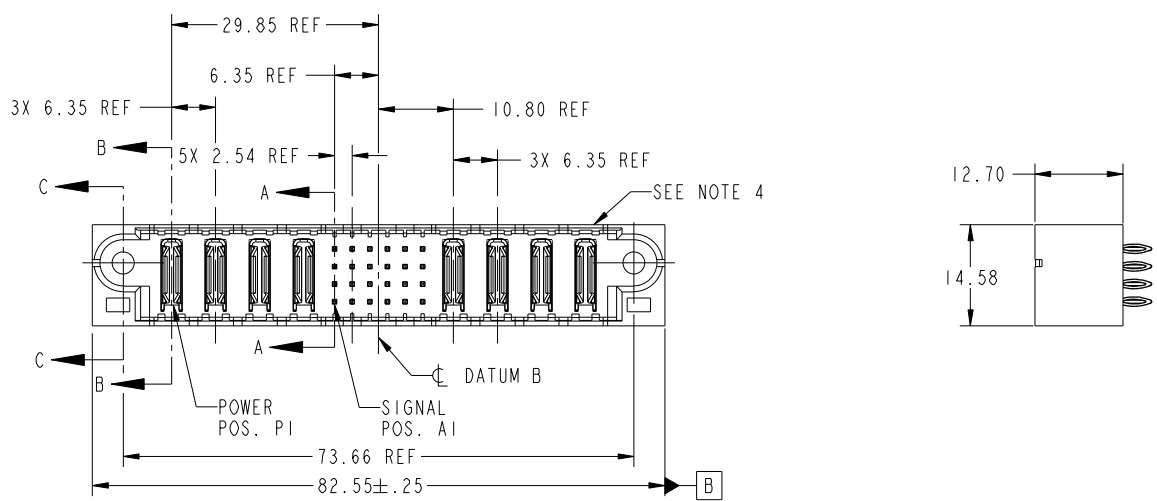


Tous droits strictement reserves. Reproduction ou communication a des tiers interdite sous quelque forme que ce soit sans autorisation écrite du propriétaire. Propriete de c FCI. Droits de reproduction FCI.



All rights strictly reserved. Reproduction or issue to third parties in any form whatever is not permitted without written authority from the proprietor. Property of FCI. Copyright FCI.

PRODUCT NO.	ROWS	POWER				SIGNAL						POWER				E2	
		E1	P1	P2	P3	P4	1	2	3	4	5	6	P5	P6	P7		P8
51952-105-- NOTE ③	D C B A		PC	PC	PC	PC	G	G	G	G	G	G	PC	PC	PC	PC	



CODE	DIM "M" MATING LENGTH	CONTACT TYPE
PC	[N/A]	POWER
G	[6.86]	SIGNAL

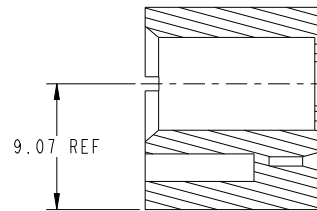
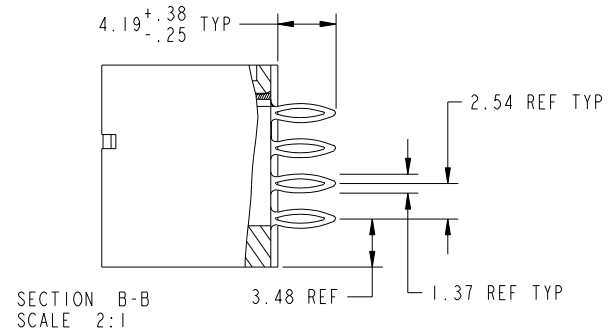
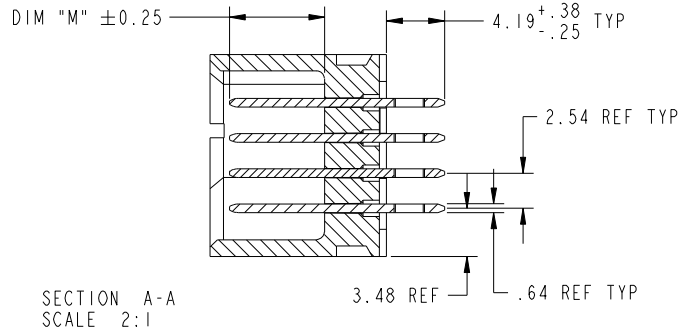
mat'l code				tolerances unless otherwise specified		CUSTOMER		
ltr	ecn no.	dr	date	linear	0.X ±0.3	COPY	www.fciconnect.com	
A	DG06-0472	JULIA	11/16/06	angles	0.XX ±0.13	projection	title 4P + 24S + 4P VERTICAL PRESS-FIT HEADER	
				dr	0.XXX ±0.051		product family	PwrBlade
				enr	0° ±2°	MIM	size	code 213
				chr		scale	dwg no	sheet 1 of 4
				appd	JULIA WANG 10/16/06	1:1	51952-105	
sheet index	revision sheet	A 1	A 2	A 3	A 4			
							cage code	22526

Tous droits strictement reserves. Reproduction ou communication a des tiers interdite sous quelque forme que ce soit sans autorisation écrite du propriétaire. Propriete de c FCI. Droits de reproduction FCI.

All rights strictly reserved. Reproduction or issue to third parties in any form whatever is not permitted without written authority from the proprietor. Property of FCI. Copyright FCI.



PRODUCT NUMBER  
51952-105\_\_  
NOTE 3



mat'l code				tolerances unless otherwise specified		CUSTOMER		 www.fciconnect.com	
ltr	ecn no.	dr	date	linear	0.X ±0.3	COPY		title	
A					0.XX ±0.13	projection		4P + 24S + 4P	
				angles	0.XXX ±0.051			VERTICAL PRESS-FIT HEADER	
				dr	0° ±2°			product family PwrBlade code	
				enr	JULIA WANG 10/16/06	scale		size	
				chr	RYAN YUAN 11/16/06	1:1		dwg no	
				appd	GARY HSIEH 11/16/06			A 51952-105	
					JOSEPH HSIA 11/16/06			sheet	
sheet index	revision sheet							2 of 4	

cage code 22526

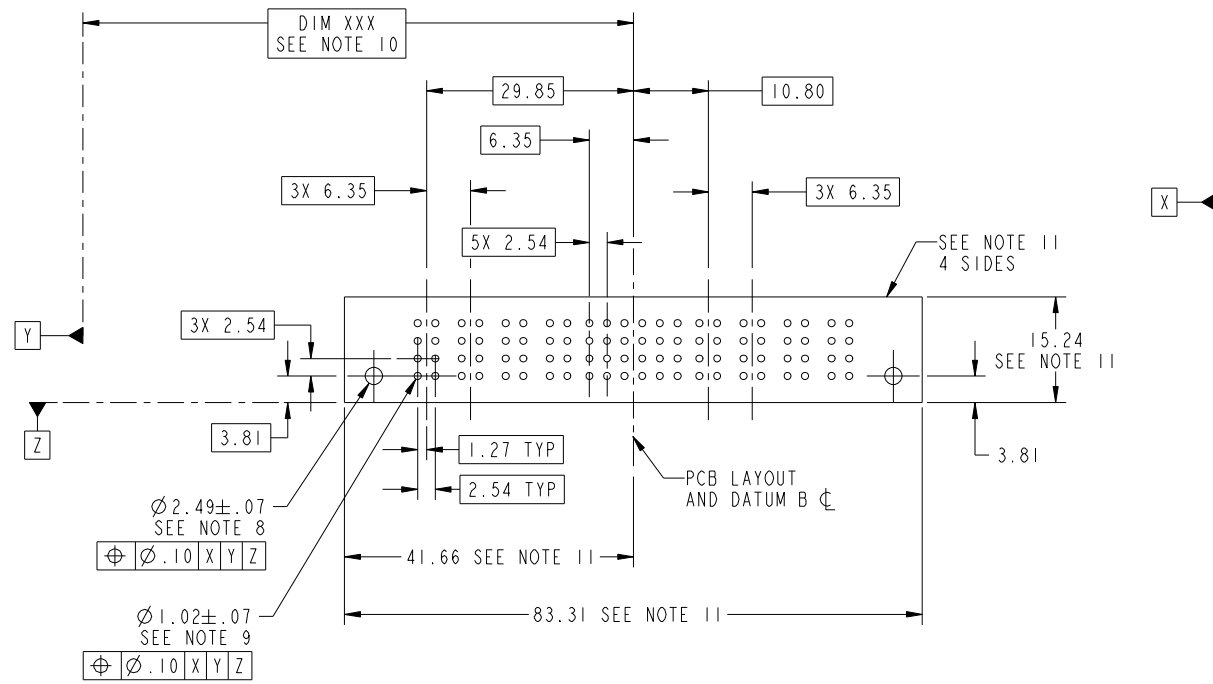
Pro/E

Tous droits strictement reserves. Reproduction ou communication a des tiers interdite sous quelque forme que ce soit sans autorisation écrite du propriétaire. Propriete de c FCI. Droits de reproduction FCI.



All rights strictly reserved. Reproduction or issue to third parties in any form whatever is not permitted without written authority from the proprietor. Property of FCI. Copyright FCI.

PRODUCT NUMBER  
51952-105\_\_  
NOTE 3



mat'l code				tolerances unless otherwise specified		CUSTOMER		FCI	
ltr	ecn no.	dr	date	linear	0.X ± 0.3	COPY		www.fciconnect.com	
A					0.XX ± 0.13	projection		title	
				angles	0.XXX ± 0.051			4P + 24S + 4P	
				dr	0° + 2°			VERTICAL PRESS-FIT HEADER	
				enr	JULIA WANG 10/16/06	product family		PwrBlade	
				chr	RYAN YUAN 11/16/06	size		code	
				appd	GARY HSIEH 11/16/06	dwg no		213	
					JOSEPH HSIA 11/16/06	scale		sheet	
						1:1		3 of 4	
sheet index	revision sheet					A		51952-105	

cage code 22526

Pro/E

Tous droits strictement reserves. Reproduction ou communication a des tiers interdite sous quelque forme que ce soit sans autorisation écrite du propriétaire. Propriete de c FCI. Droits de reproduction FCI.



All rights strictly reserved. Reproduction or issue to third parties in any form whatever is not permitted without written authority from the proprietor. Property of FCI. Copyright FCI.

PRODUCT NUMBER  
51952-105--  
NOTE 3

NOTES:

1. DIMENSIONS AND TOLERANCES ARE IN ACCORDANCE WITH ASME Y14.5M, 1994 UNLESS OTHERWISE SPECIFIED.

CONNECTOR NOTES:

- 2 HOUSING MATERIAL: UL 94 V-0 GLASS FILLED  
HIGH-TEMP THERMOPLASTIC  
POWER CONTACT MATERIAL: COPPER ALLOY  
SIGNAL PIN MATERIAL: COPPER ALLOY
  - 3. PLATING:  
51952-105 ,51952-105LF PLATING SPEC. WAS SHOWN IN THE PRINT OF 10064183.
  - 4 MANUFACTURER'S NAME, P/N, AND DATE CODE TO APPEAR ON THIS SURFACE.
  - 5. PRODUCT SPECIFICATION GS-12-149.  
APPLICATION SPECIFICATION BUS-20-067.
  - 6. PACKAGED IN TRAYS.
- PCB NOTES:
- 7. ALL HOLE DIAMETERS ARE FINISHED HOLE SIZE.
  - 8. MOUNTING HOLES, WHERE APPLICABLE, ARE UNPLATED.
  - 9  $\varnothing 1.151 \pm 0.025$  DRILLED HOLES PLATED WITH  
0.008 MIN SnPb OR Sn OVER 0.03  
TO 0.08 Cu PLATING TO ACHIEVE  
 $\varnothing 1.02 \pm 0.07$  HOLE.
  - 10 "DIM XXX" TO BE DETERMINED BY THE CUSTOMER.
  - 11 CONNECTOR KEEP-OUT ZONE.
12. FOR PRESS FIT APPLICATION USE FCI CAM TOOL 430169-XXX.

mat'l code				tolerances unless otherwise specified		CUSTOMER		FCI		www.fciconnect.com	
ltr	ecr no.	dr	date	linear	0.X ± 0.3	COPY		title			
A					0.XX ± 0.13	projection		4P + 24S + 4P			
				angles	0.XXX ± 0.051			VERTICAL PRESS-FIT HEADER			
				dr	0° ± 2°	MIM		product family		PwrBlade	code
				enr	JULIA WANG 10/16/06			size	dwg no		213
				chr	RYAN YUAN 11/16/06	scale		A	51952-105		sheet
				appd	GARY HSIEH 11/16/06	1:1				4 of 4	
					JOSEPH HSIA 11/16/06						
sheet index	revision sheet										

cage code 22526

Pro/E