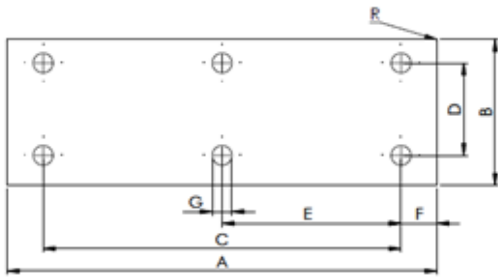


Die Cut PCM Rectifier Bridge



Features

Low thermal resistance
Natural tack

Applications

Rectifier Bridge

Properties

- ◆ REACH Compliant
- ◆ RoHS Compliant

Property	PC99	Unit	Tolerance	Test Method
Colour	Yellow	-	-	Visual
Thickness	0.06	mm	-	ASTM D374
Phase Change Softening Point	52	°C	-	-
Specific Gravity	2.35	g/cm ³	±0.2	ASTM D792
Working Temperature	-40 to 200	°C	-	-
Surface Resistance	>10 ¹²	Ohm-cm	-	ASTM D257
Elongation	5	%	±13	ASTM D412
Tensile Strength	0.1	Kgf/cm ²	-	ASTM D412
Standard Shape	-	Sheets 320-320mm	-	-
Thermal Resistance 30psi	0.1	°c-cm ² /w	-	-

Dimensions / mm							Ordering part number
A	B	C	D	E	F	G	
58.2	61.2	33.00	53.3	16.5	12.6	3.8	DC0037/01 - XXX - T
115.8	60	91.50	53.3	45.7	12.2	4.1	DC0037/02 - XXX - T
116.80	58.5	101.6	43.2	47	-	7.6	DC0037/03 - XXX - T