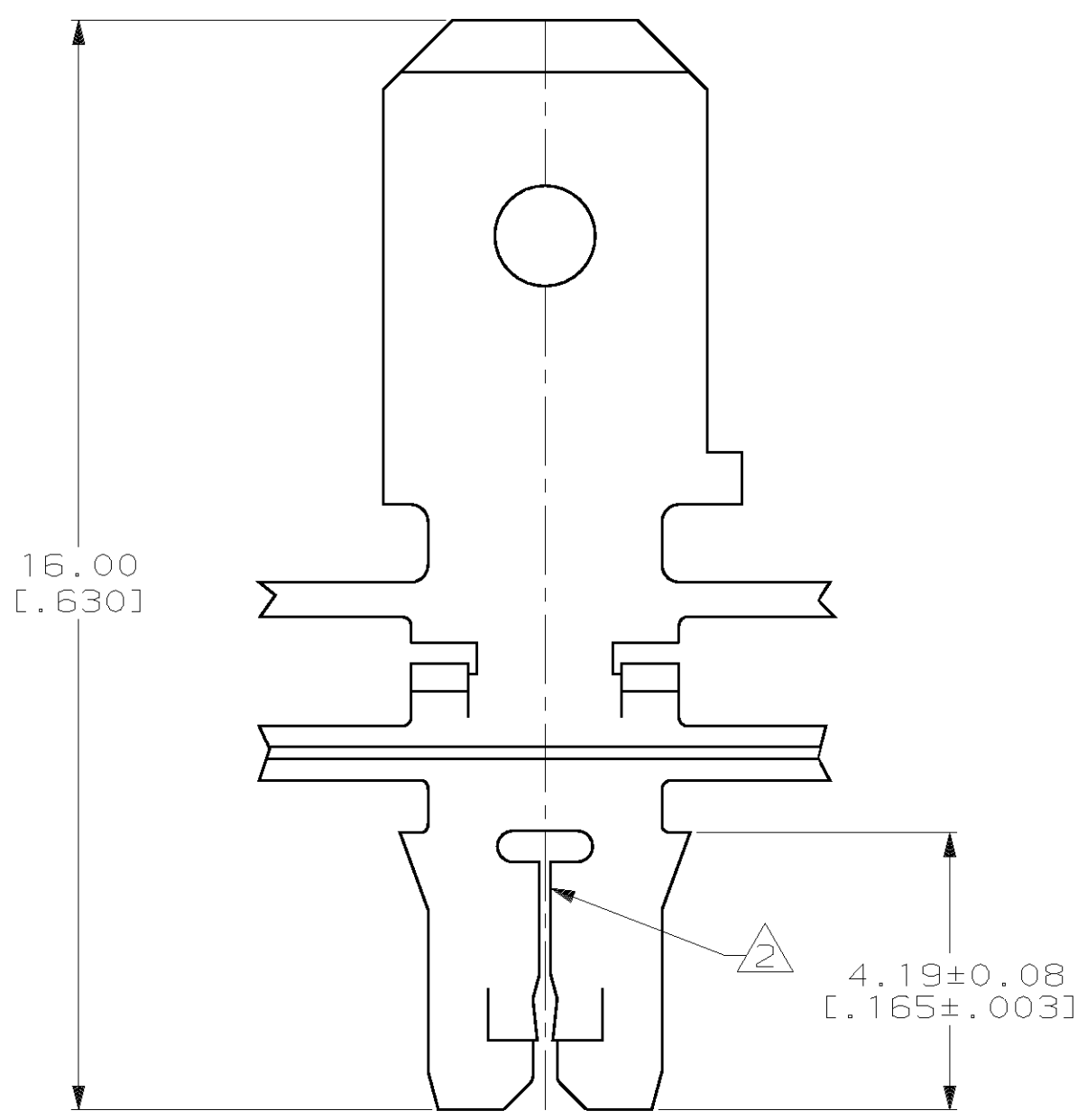
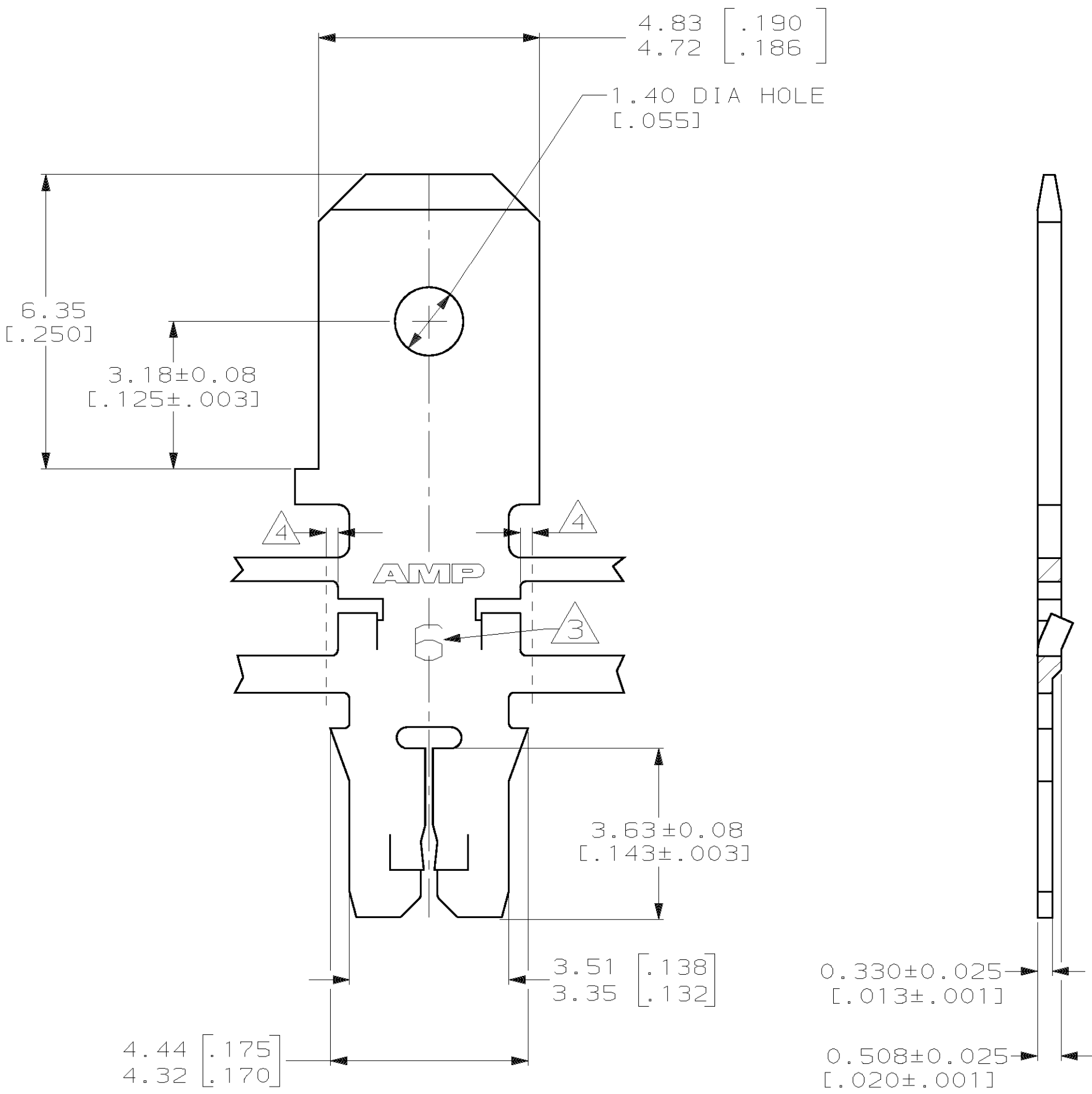


LOC		DIST		ZONE		LTR		REVISIONS		DATE	APPD
AF	50	P	F			F		REVISED PER 063A-0034-01	09FEB01	MF-KR	

- 1 CONTINUOUS STRIP ON REELS WITH TERMINALS LOCATED ON 6.86±0.08 [.270±.003] CENTERS
- 2 SLOT ACCEPTS 0.25-0.32mm [#30-#28] AWG COPPER MAGNET WIRE. TWO WIRES OF THE SAME SIZE MAX PER SLOT
- 3 IDENTIFICATION NUMBER 6 FOR THE MAGNET WIRE SLOT SIZE
- 4 0.25[.010] MAX CARRIER CUT-OFF TABS



DO NOT SCALE PRINT. UNLESS SPECIFIED DIMENSIONS IN mm [INCHES] TOLERANCES ON:		DR 9-27-93 L.A.MAYER		082 PRE-MILLED BRASS		63711-2	
2 PLC DEC ± 0.13 [.005]		CHK 9-27-93 M.S. FEHER		<del>4M PRE-MILLED BRASS</del>		<del>63711-1</del>	
3 PLC DEC ± -		APPD 9-27-93 A.HUNT III		MATERIAL		PART NO	
ANGLES ± -		APPD 9-27-93 T.L.SHUTTER		OBSOLETE			
MATERIAL SEE TABLE		PRODUCT SPEC 108-1484		AMP Incorporated Harrisburg, PA 17105-3608			
FINISH 0.002032 [.000080] MIN TIN		APPLICATION SPEC 114-2140		NAME TAB, 4.75 [.187] FASTON, <sup>TM</sup> MAG-MATE <sup>TM</sup> Slim Line			
		WEIGHT -		SIZE C	CAGE CODE 00779	DRAWING NO C=63711	
				SCALE 10:1	SHEET 1 OF 1		

THIS DRAWING IS A CONTROLLED DOCUMENT FOR AMP INCORPORATED. IT IS SUBJECT TO CHANGE AND THE CONTROLLING ENGINEERING ORGANIZATION SHOULD BE CONTACTED FOR THE LATEST REVISION.