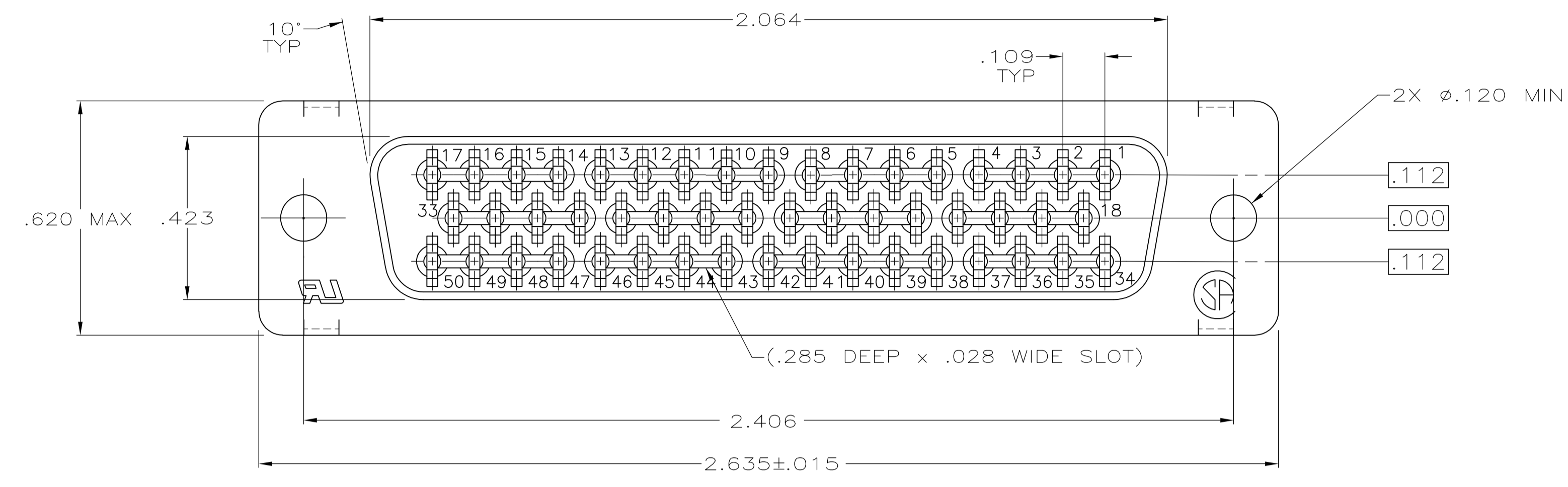
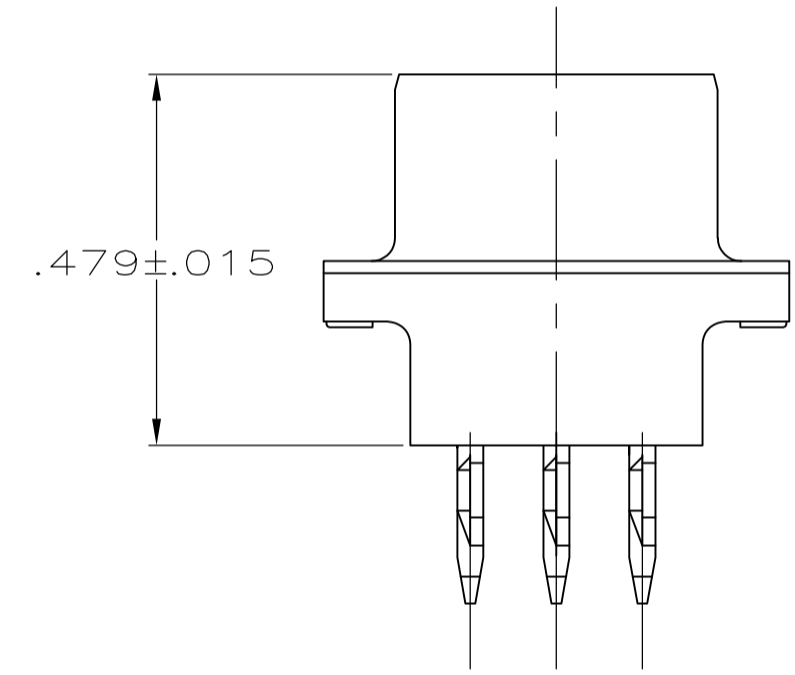
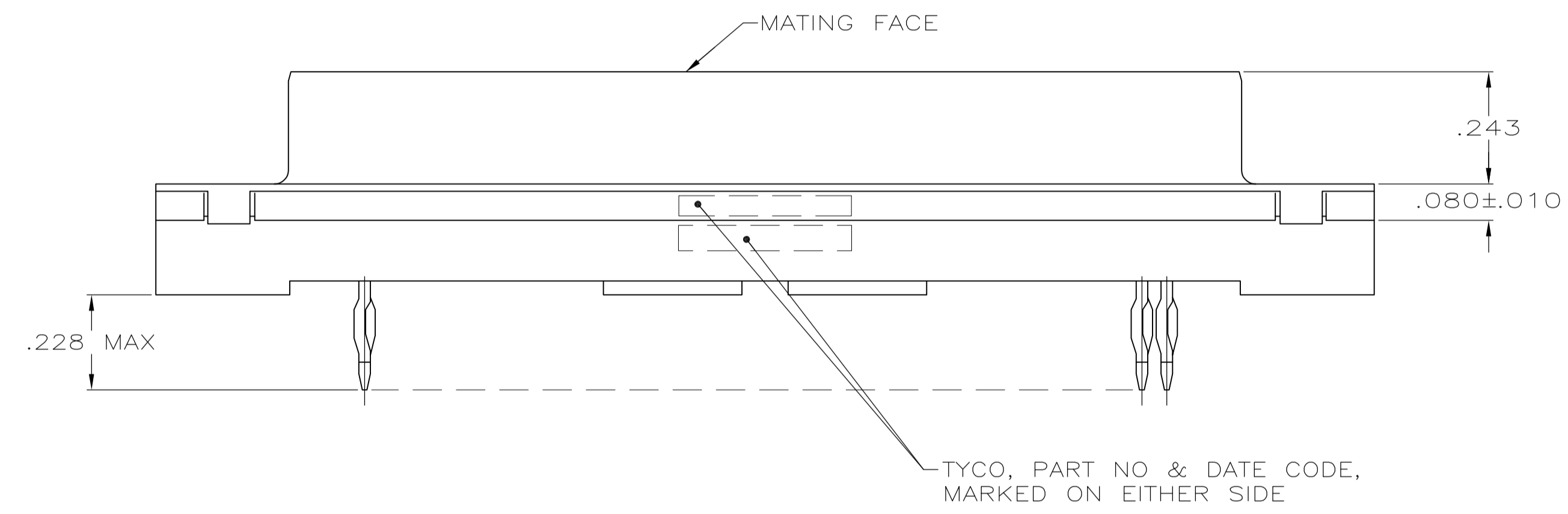


LOC		DIST		REVISIONS			
P	LTR	DESCRIPTION	DATE	DN	APVD		
C		REVISED PER ECO-12-000090	26JAN2012	CJV	SLB		



- 1 FOR USE WITH .093 MINIMUM THICK PRINTED CIRCUIT BOARD. REFER TO APPLICATION SPECIFICATION FOR PRINTED CIRCUIT BOARD LAYOUT DIMENSIONS AND FINISH RECOMMENDATIONS.
- 2 HOUSING: GLASS-FILLED NYLON OR POLYESTER, UL94V-0 RATED, COLOR BLACK. CONTACTS: COPPER ALLOY. SHELL: CARBON STEEL.
- 3 CONTACTS:
 0.76 MICRO METERS [.000030] MINIMUM GOLD IN MATING AREA.
 2.54 MICRO METERS [.000100] MINIMUM TIN ON COMPLIANT PIN.
 ALL OVER 1.27 MICRO METERS [.000050] MINIMUM NICKEL.
 OR
 GOLD FLASH OVER PALLADIUM NICKEL.
 0.76 MICRO METERS [.000030] MINIMUM TOTAL IN MATING AREA.
 2.54 MICRO METERS [.000100] MINIMUM TIN ON COMPLIANT PIN.
 ALL OVER 1.27 MICRO METERS [.000050] MINIMUM NICKEL.



5747143-2
PART NO

THIS DRAWING IS A CONTROLLED DOCUMENT. DIMENSIONING AND TOLERANCING PER ASME Y14.5M-2009.		DWG: G.PETERS/DTI CHK: S.BOLASH	DATE: 09MAR08	TE Connectivity	
DIMENSIONS: INCHES TOLERANCES UNLESS OTHERWISE SPECIFIED: 0 PLC ± - 1 PLC ± - 2 PLC ± - 3 PLC ± .005 4 PLC ± - ANGLES ± -		APVD: M.WALMSLEY PRODUCT SPEC: 108-40014 APPLICATION SPEC: 114-40026	NAME: RECEPTACLE ASSY, SIZE 5, 50 POS. MEDIUM PROFILE, ACTION PIN CONTACTS, METAL SHELL, AMPLIMITE HDP	SIZE: A1 CAGE CODE: 00779 DRAWING NO: 5747143	RESTRICTED TO: -
MATERIAL: 2		FINISH: 3		CUSTOMER DRAWING	
SCALE: 4:1			SHEET: 1 OF 1		REV: C