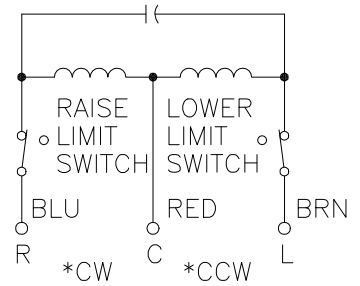
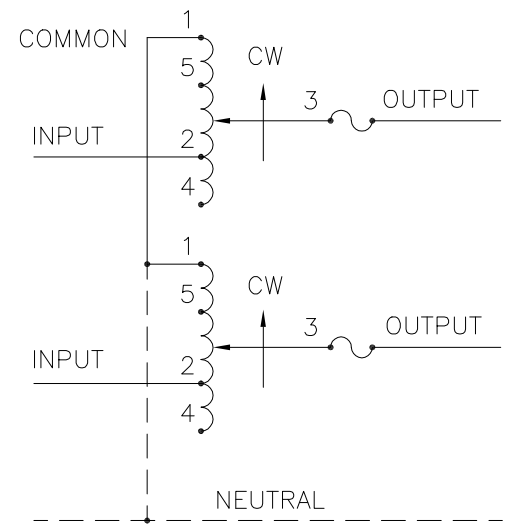


(4) STANDOFFS TAPPED  
 1/4-28 X .38 [9.5] DEEP  
 FOR MOUNTING BOLTS

.88 [22.2] DIA. KNOCKOUT  
 (4) PLACES FOR  
 WIRING CONNECTIONS

.28 [7.1]  
 (4) PLACES FOR  
 CUSTOMER MOUNTING

.88 [22.2] DIA. KNOCKOUT  
 (4) PLACES FOR  
 MOTOR CONNECTIONS



MOTOR CIRCUIT  
 120V, 50/60 HZ  
 \* ROTATION AS VIEWED  
 FROM MOTOR END  
 MOTOR SPEED: SEE CHART

- + MOTOR DRIVEN UNITS USE TERMINAL CONNECTIONS FOR CCW INCREASING VOLTAGE, AS VIEWED FROM BASE END.
- ∏ IF GANGED UNITS ARE USED IN A SYSTEM THAT ORDINARILY HAS A COMMON NEUTRAL OR GROUND BETWEEN SOURCE AND LOAD, THE NEUTRAL OR GROUND MUST BE CONNECTED TO THE COMMON TERMINALS OF THE VARIABLE TRANSFORMER ASSEMBLY. IF THE SYSTEM HAS NO NEUTRAL, THE LOAD MUST BE BALANCED OR THE TRANSFORMER WILL BE DAMAGED.
- JUMPER PROVIDED IN STANDARD COMMON POSITION AND SHOULD BE MOVED OR REMOVED AS REQUIRED.
- ++ LINE TO LINE VOLTAGE.

SPECIFICATIONS											
WIRING	INPUT		OUTPUT				SHAFT ROTATION TO INCREASE VOLTAGE	TERMINAL CONNECTIONS			
	VOLTS	HERTZ	VOLTS	CONSTANT CURRENT LOAD		CONSTANT IMPEDANCE LOAD		FOR INCREASING VOLTAGE AS VIEWED FROM BASE END +			
				MAX. AMPS	MAX. KVA	MAX. AMPS	MAX. KVA		INPUT	JUMPER ■	OUTPUT
SINGLE PHASE SERIES	240	50/60	0-240	10	2.4	13	3.12	CW	1-1	4-4	3-3
			0-280	10	2.8	—	—	CCW	4-4	1-1	3-3
THREE PHASE OPEN DELTA ∏	120 ++	50/60	0-120	10	2.08	13	2.70	CW	1-4-1	4-4	3-4-3
								CCW	4-1-4	1-1	3-1-3
			0-140	10	2.42	—	—	CW	5-4-5	4-4	3-4-3
								CCW	2-1-2	1-1	3-1-3

SPEED (SECONDS)	MODEL NUMBER
5	5M1010BCT-2
15	15M1010BCT-2
30	30M1010BCT-2
60	60M1010BCT-2

UNLESS OTHERWISE SPECIFIED, TOLERANCE IS #			
DECIMALS	Holes .002	ANGLES 1°	DRAFT 1-1/2°
XX .0005			
MATERIAL: _____			
UNITS IN [mm]			
ALL DIMENSIONS APPLY AFTER PLATING			
TITLE: SPEC. CONTROL DRAWING MOTORIZED VARIABLE XFMR MODEL: M1010BCT-2			
DRAWN BY S.A. SMITH	DATE 9/22/97	FIRST USED ON	DO NOT SCALE DWG.
CHECKER	DATE	WEIGHT APPROX. 30.75 LBS	CODE IDENT. NO. 83008
ENGINEER	DATE	SCALE 1=1	SHEET 1 OF 1
CUSTOMER APPROVAL			DATE
DWG. NO. 031-1840			DWG. SIZE D



SCHEMATIC  
 (FUSE RECOMMENDED BUT NOT SUPPLIED)