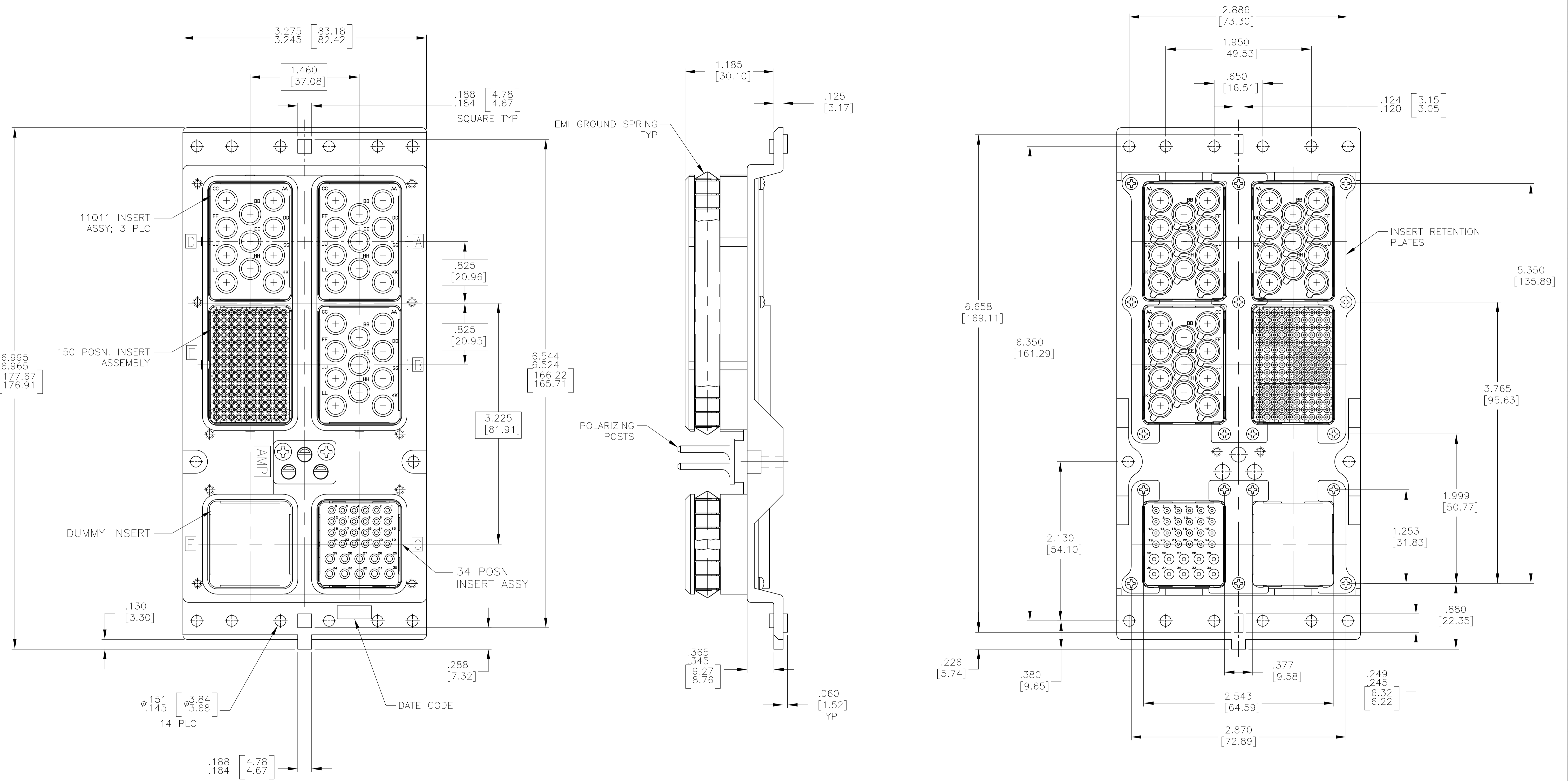


LOC		DIST		REVISIONS			
F	LTR	DESCRIPTION	DATE	DMN	APVD	RS	CT
C		REVISED PER ECO-15-011840	17NOV15	RS	CT		



- CONNECTOR DIMENSIONS ARE PER ARINC 600 SPECIFICATION
- DUST COVER (NOT SHOWN) INSTALLED FOR SHIPPING. (2 PLC)
- KEYING SHOWN IN POSITION "01" FOR REFERENCE ONLY. SEE TABLE FOR KEYING POSITION. FOR POSITION "00" KEYING SHIPPED UNASSEMBLED.
- THE FOLLOWING CONTACTS ARE INCLUDED BUT NOT INSTALLED:
 SIZE 22 CRIMP PIN CONTACT; TE PART NO. 208262-3; QTY = 150
 SIZE 20 CRIMP SOCKET CONTACT; TE PART NO. 208267-2; QTY = 24
 SIZE 16 CRIMP SOCKET CONTACT; TE PART NO. 208270-2; QTY = 10
 QUADRAX SOCKET CONTACT; TE PART NO. 1445693-1; QTY = 33

COMPONENT	MATERIAL	FINISH
SHELL	DIE CAST ALUMINUM PER ASTM-B-85	ELECTROLESS NICKEL PER MIL-C-26074,
RETENTION PLATES	ALUMINUM ALLOY PER ASTM-B-209	ELECTROLESS NICKEL PER MIL-C-26074,
SCREWS AND LOCKWASHERS	STEEL OR STAINLESS STEEL	CHROMATE OVER ZINC OR PASSIVATED
POLARIZING POSTS	ZINC ALLOY PER ASTM-B-86	ELECTROLESS NICKEL PER MIL-C-26074,
POLARIZING POST RETAINING PLATE	ALUMINUM ALLOY PER ASTM-B-209	BLUE ANODIZED PER MIL-A-8625
150 & 34 INSERTS	THERMOSET	-
11Q11 & DUMMY INSERTS	ALUMINUM ALLOY PER ASTM-B-209	ELECTROLESS NICKEL PER MIL-C-26074,

OBsolete	"01"	2157337-1
	KEYING POSITION	PART NUMBER

THIS DRAWING IS A CONTROLLED DOCUMENT.

DIMENSIONS: INCHES	TOLERANCES UNLESS OTHERWISE SPECIFIED:	DIN C.C.THOMAS 6-9-11	APVD W.BERHMART 6-9-11	NAME
0 PLC ± -	1 PLC ± -	2 PLC ± -	3 PLC ± .005 (0.13)	APPLICATION SPEC
4 PLC ± -	ANGLES ± -			
MATERIAL SEE TABLE	FINISH SEE TABLE	WEIGHT	SIZE CASE CODE DRAWING NO	RESTRICTED TO
			A1 00779 C=2157337	
CUSTOMER DRAWING		SCALE 3:2	SHEET 1 OF 1	REV C

STE TE Connectivity
 PLUG ASSY, SIZE 3, ARINC 600 (11Q11/11Q11/34/11Q11/150/DUMMY)